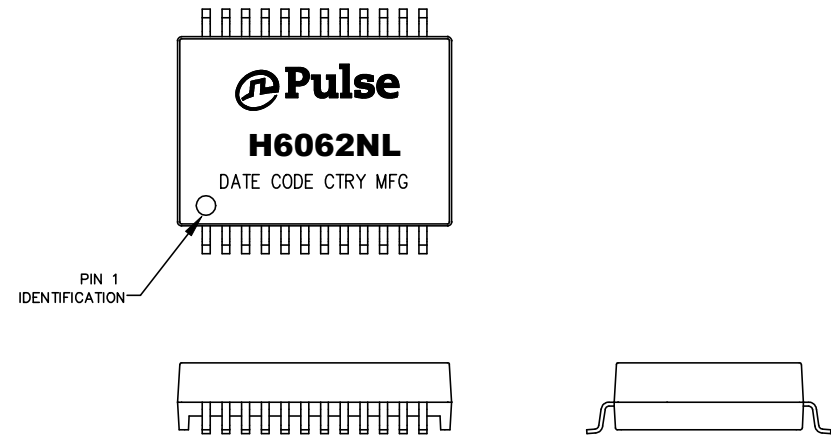




NOTES:

1. ROHS COMPLIANT
2. HEADER: THERMOSET PLASTIC MATERIAL WITH FLAMMABILITY RATING UL 94V-0 OR BETTER.
3. STORAGE TEMPERATURE: -20°C TO +125°C
4. COMPLIANCE TO J-STD:
  - A. J-STD-002: SOLDERABILITY AT 245°C REFLOW PROFILE
  - B. J-STD-020: LEVEL 1, NO MOISTURE SENSITIVE
  - C. J-STD-075: R7, 245°C MAXIMUM THROUGH REFLOW SOLDER
5. TO ORDER TAPE & REEL PACKAGING ADD A "T" SUFFIX TO THE PART NUMBER(i.e H6062NL BECOMES H6062NLT).



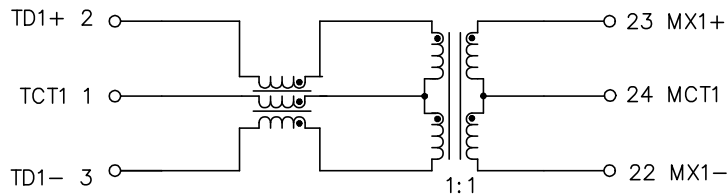
FINAL OUTLINE

© Copyright, 2018. Pulse Electronics Corp. All rights reserved. Pulse confidential & proprietary. (08/20/18)

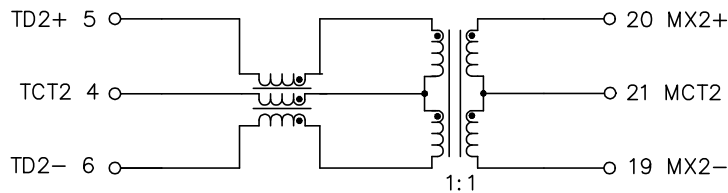
| PRODUCT DESCRIPTION   | TLA DRAWING | PS DRAWING    | SHEET  | PART NO. | DATASHEET REV. |
|-----------------------|-------------|---------------|--------|----------|----------------|
| MDL,SIN,1GP,1:1,SM,TU | H6062NL-16  | PS-2228.001-C | 1 OF 4 | H6062NL  | D              |



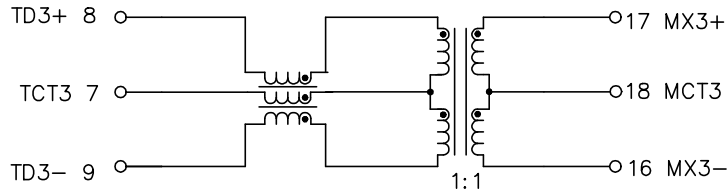
CHANNEL 1



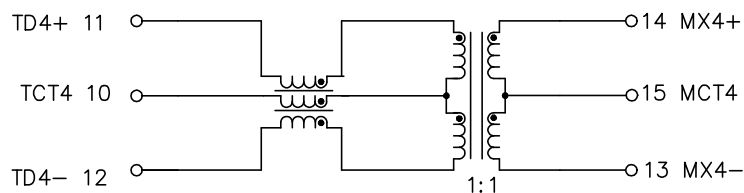
CHANNEL 2



CHANNEL 3



CHANNEL 4

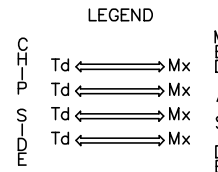


SCHEMATIC

ELECTRICAL CHARACTERISTICS AT +25°C UNLESS OTHERWISE SPECIFIED  
(FOR REFERENCE ONLY. USED FOR CUSTOMER INFORMATION.)

| PARAMETER                                  | SPECIFICATIONS   |  |
|--|--|--|
| OPERATING TEMP                             | 0°C TO +70°C   |  |
| URNS RATIO                                 | 1 : 1 ±3%  |  |
| PARAMETER                                  | SPECIFICATIONS   |  |
| INSERTION LOSS                             | 100 KHz  | 1–125 MHz                                  |
|  | -1.2 dB MAX  | -0.2-0.002*f <sup>1.4</sup> dB MAX         |
| RETURN LOSS<br>(Z OUT = 100 OHM ±15%)      | .1–40 MHz  | 40–100 MHz                                 |
|  | -16 dB MIN   | -10+20*LOG <sub>10</sub> (f/80 MHz) dB MIN |
| INDUCTANCE (OCL)<br>(MEDIA SIDE, 0°C–70°C) | 350 uH MIN (MEASURED AT 100 KHz, 100 mVRMS)<br>(AND WITH 8 mA DC BIAS) |  |
| CROSSTALK, ADJACENT CHANNELS               | 1 MHz  | 10–100 MHz                                 |
|  | -50 dB MIN   | -55+22*LOG <sub>10</sub> (f/10) dB MIN     |
| COMMON MODE REJECTION RATIO                | 2 MHz  | 30–200 MHz                                 |
|  | -50 dB MIN   | -15+20*LOG <sub>10</sub> (f/200) dB MIN    |
| DC RESISTANCE, 1/2 WINDING                 | .65 OHMS MAX   |  |
| DC RESISTANCE IMBALANCE                    | ±.065 OHMS MAX (CENTER TAP SYMMETRY)                                   |  |
| DC CURRENT/VOLTAGE RATING                  | 350 mA MAX @ 57 V (CONTINUOUS)   |  |
| INPUT – OUTPUT ISOLATION                   | 1500 VRMS MIN @ 60 SECONDS   |  |

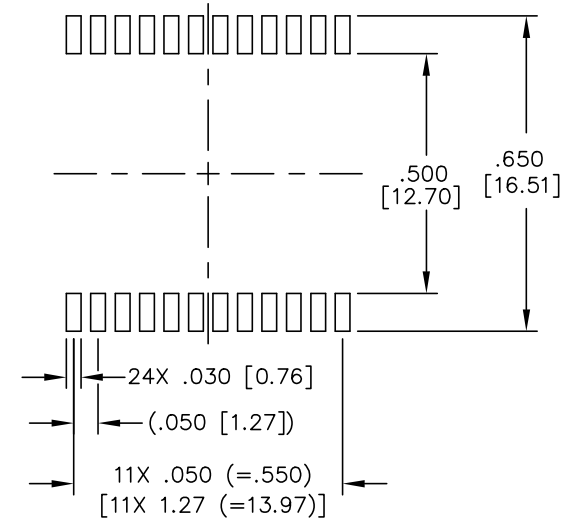
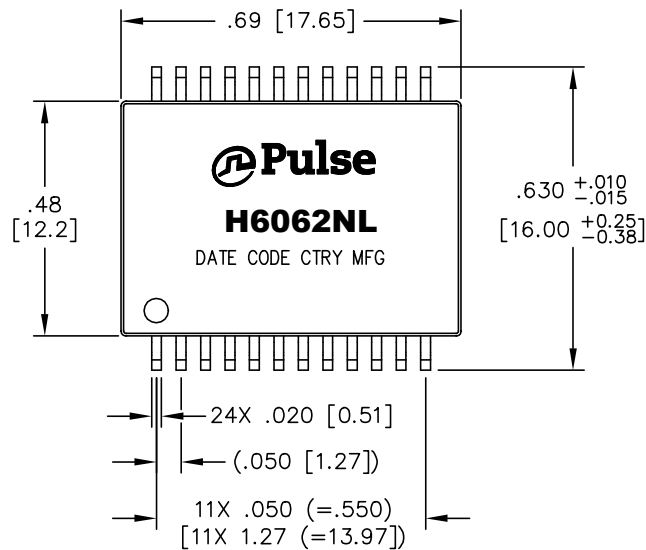
NOTE: f IS FREQUENCY IN MHz.



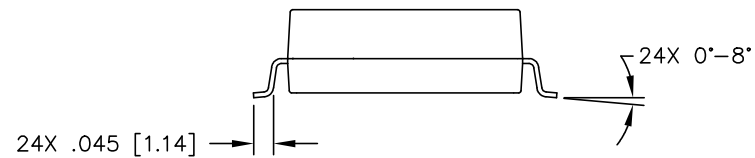
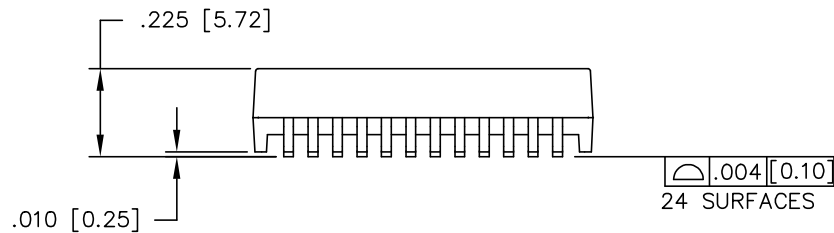
ALL CHANNELS ARE IN PHASE BETWEEN INPUT AND OUTPUT

© Copyright, 2018. Pulse Electronics Corp. All rights reserved. Pulse confidential & proprietary. (08/20/18)

| PRODUCT DESCRIPTION   | TLA DRAWING | PS DRAWING    | SHEET  | PART NO. | DATASHEET REV. |
|-----------------------|-------------|---------------|--------|----------|----------------|
| MDL,SIN,1GP,1:1,SM,TU | H6062NL-16  | PS-2228.001-C | 2 OF 4 | H6062NL  | D              |



SUGGESTED LAND PATTERN



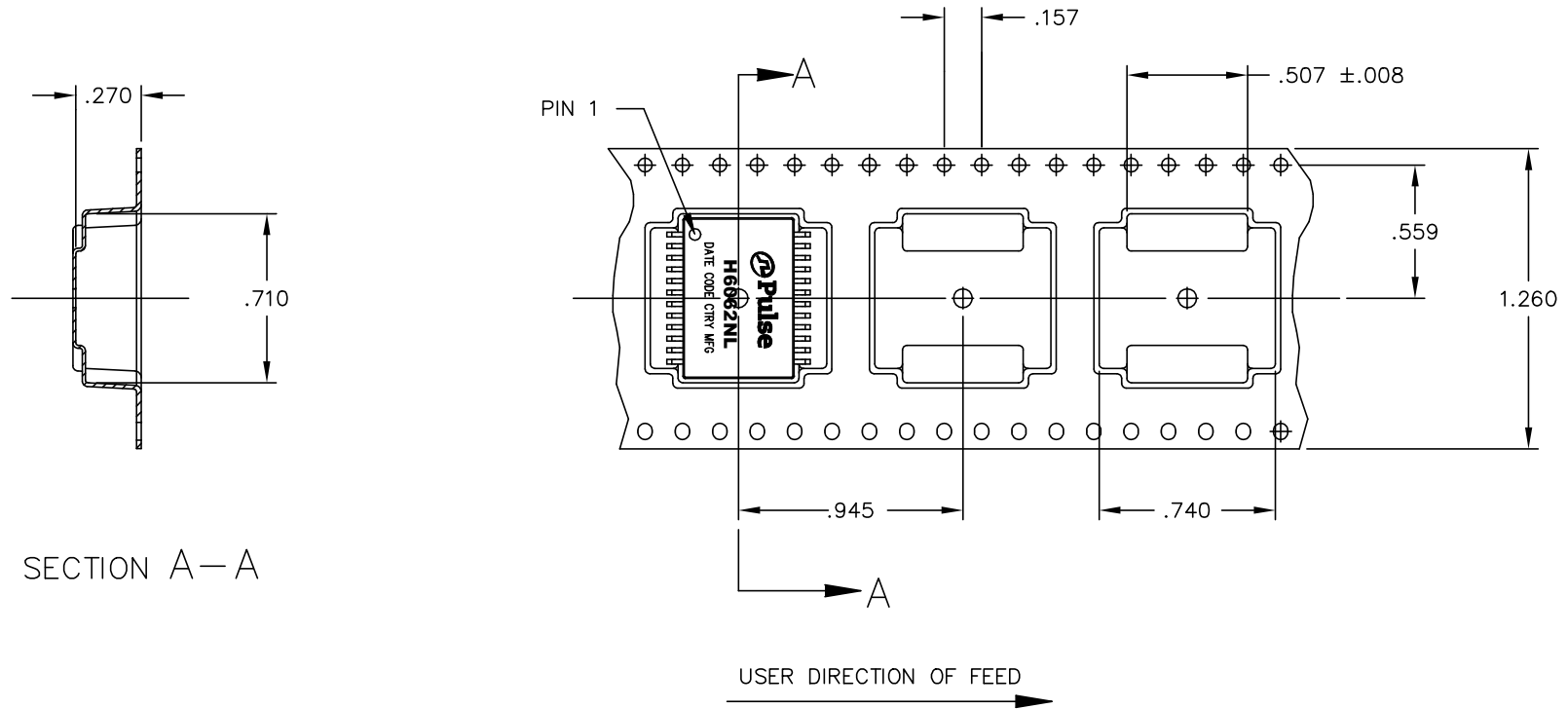
DIMENSIONS ARE IN INCHES WITH THE FOLLOWING TOLERANCES:  
.XX=  $\pm$ .01  
.XXX=  $\pm$ .005

© Copyright, 2018. Pulse Electronics Corp. All rights reserved. Pulse confidential & proprietary. (08/20/18)

| PRODUCT DESCRIPTION   | TLA DRAWING | PS DRAWING    | SHEET  | PART NO. | DATASHEET REV. |
|-----------------------|-------------|---------------|--------|----------|----------------|
| MDL,SIN,1GP,1:1,SM,TU | H6062NL-16  | PS-2228.001-C | 3 OF 4 | H6062NL  | D              |



NOTE: PACK 300 PIECES PER REEL.



SECTION A-A

DIMENSIONS ARE IN INCHES WITH THE FOLLOWING  
TOLERANCES:  $\pm 0.008$

© Copyright, 2018. Pulse Electronics Corp. All rights reserved. Pulse confidential & proprietary. (08/20/18)

| PRODUCT DESCRIPTION   | TLA DRAWING | PS DRAWING    | SHEET  | PART NO. | DATASHEET REV. |
|-----------------------|-------------|---------------|--------|----------|----------------|
| MDL,SIN,1GP,1:1,SM,TU | H6062NL-16  | PS-2228.001-C | 4 OF 4 | H6062NL  | D              |

## X-ON Electronics

Largest Supplier of Electrical and Electronic Components

*Click to view similar products for [Audio Transformers](#) / [Signal Transformers](#) category:*

*Click to view products by [Pulse manufacturer](#):*

Other Similar products are found below :

[CX2041NLT](#) [MGPWT-00449-P](#) [PE-64961](#) [H1302FNLT](#) [H5008FNL](#) [H5012FNL](#) [H5020FNLT](#) [H5077NLT](#) [H5084FNLT](#)  
[B78476A9558A003](#) [1812WBT2-4](#) [1879479-1](#) [HX2260FNL](#) [HX5014FNL](#) [EX2024FNL](#) [FL1066](#) [T1137NLT](#) [T3012NL](#) [PE-65812FNL](#) [PE-65848FNLT](#) [H1174FNL](#) [H1302FNL](#) [H5015FNL](#) [H5019EFNL](#) [H5062FNLT](#) [CX2047LNL](#) [MGPWT-00059-P](#) [MGPWT-00266-P](#) [MGPWT-00278-P](#) [MGPWT-00431-P](#) [TTC-100](#) [TTC-143-H](#) [TTC-5032-1](#) [BX1194WNLT](#) [HX1234NLT](#) [HX5008FNLT](#) [HX5019FNL](#) [HX5084NL](#) [3-1879385-5](#) [TX1263NLT](#) [4-1879391-0](#) [T1142NL](#) [HX6101FNL](#) [HX5084FNL](#) [HX1148NL](#) [HX5020FNLT](#) [HX5014FNLT](#) [T1124NL](#)  
[1879732-1](#) [2-1879391-5](#)