






PulseJack™ 1xN Tab-Down

Description:

100 Base-TX (Fast Ethernet) RJ45 1xN Tab-DOWN with or without LEDs integrated magnetics connector (ICM) designed to support applications such as: SOHO (ADSL modems), LAN-on-Motherboard (LOM), Hub and Switches.



Features and Benefits:

-  RoHS peak wave solder temperature rating 260°C
-  Suitable for CAT 5 & 6 Fast Ethernet Cable or better UTP
-  Meets IEEE 802.3 specification
-  350µH minimum OCL with 8mA bias current
-  High performance for maximum EMI suppression

Electrical Specifications @ 25°C - Operating Temperature 0°C to +70°C

| RoHS Compliant Part Number | Turns Ratio | | Number of Ports | LEDs ¹ L/D | Insertion Loss TX/RX (dB TYP) | Return Loss (dB TYP) 100Ω (± 15 Ω) | | | | Crosstalk (dB TYP) | | | Common Mode Rejection (dB TYP) | | Hipot (VDC MIN) @ 50/60 Hz 1 minute |
|----------------------------|-------------|---------|-----------------|-----------------------|-------------------------------|------------------------------------|----------|--------|-----------|--------------------|-----------|------------|--------------------------------|------------|---|
| | TX | RX | | | | 1-100 MHz | 1-10 MHz | 30 MHz | 60-80 MHz | 1-30 MHz | 30-60 MHz | 60-100 MHz | 1-50 MHz | 50-130 MHz | |
| J8064D628ANL | 1CT:1CT | 1CT:1CT | 1x2 | G/Y | -1.0 | -20 | -16 | -12 | -40 | -35 | -30 | -30 | -20 | 2250 | |
| JX80-0019NL ² | 1CT:1CT | 1CT:1CT | 1x2 | G/G | -1.0 | -20 | -16 | -12 | -40 | -35 | -30 | -30 | -20 | 2250 | |
| J8064D648ANL | 1CT:1CT | 1CT:1CT | 1x4 | G/Y | -1.0 | -20 | -16 | -12 | -40 | -35 | -30 | -30 | -20 | 2250 | |
| JX80-0022NL ² | 1CT:1CT | 1CT:1CT | 1x4 | G/G | -1.0 | -20 | -16 | -12 | -40 | -35 | -30 | -30 | -20 | 2250 | |
| J8064D668ANL | 1CT:1CT | 1CT:1CT | 1x6 | G/Y | -1.0 | -20 | -16 | -12 | -40 | -35 | -30 | -30 | -20 | 2250 | |
| JX8064D668ANL ² | 1CT:1CT | 1CT:1CT | 1x6 | G/Y | -1.0 | -20 | -16 | -12 | -40 | -35 | -30 | -30 | -20 | 2250 | |
| J8064D688ANL | 1CT:1CT | 1CT:1CT | 1x8 | G/Y | -1.0 | -20 | -16 | -12 | -40 | -35 | -30 | -30 | -20 | 2250 | |
| JX8064D688ANL ² | 1CT:1CT | 1CT:1CT | 1x8 | G/Y | -1.0 | -20 | -16 | -12 | -40 | -35 | -30 | -30 | -20 | 2250 | |
| J8064E62NL | 1CT:1CT | 1CT:1CT | 1x2 | None | -1.0 | -20 | -16 | -12 | -40 | -35 | -30 | -30 | -20 | 2250 | |
| J8064E64NL | 1CT:1CT | 1CT:1CT | 1x4 | None | -1.0 | -20 | -16 | -12 | -40 | -35 | -30 | -30w | -20 | 2250 | |
| J8064E66NL | 1CT:1CT | 1CT:1CT | 1x6 | None | -1.0 | -20 | -16 | -12 | -40 | -35 | -30 | -30 | -20 | 2250 | |
| J8064E68NL | 1CT:1CT | 1CT:1CT | 1x8 | None | -1.0 | -20 | -16 | -12 | -40 | -35 | -30 | -30 | -30 | 2250 | |

Notes: 1. LEDs Left/Right: G = green; Y = yellow 2. Operating temperature: -40°C to +85°C

RJ45 Durability Test Rating

| Part Number | Mating Force (MAX) | Unmating Force (MAX) | Durability | Plug to Jack Retention (MIN) |
|-------------|--------------------|----------------------|----------------|------------------------------|
| J80 Series | 5 lbs./2.268 kgs. | 5 lbs./2.268 kgs. | 750 Insertions | 20 lbs./9.072 kgs. |

PulseJack™

1xN Tab-Down

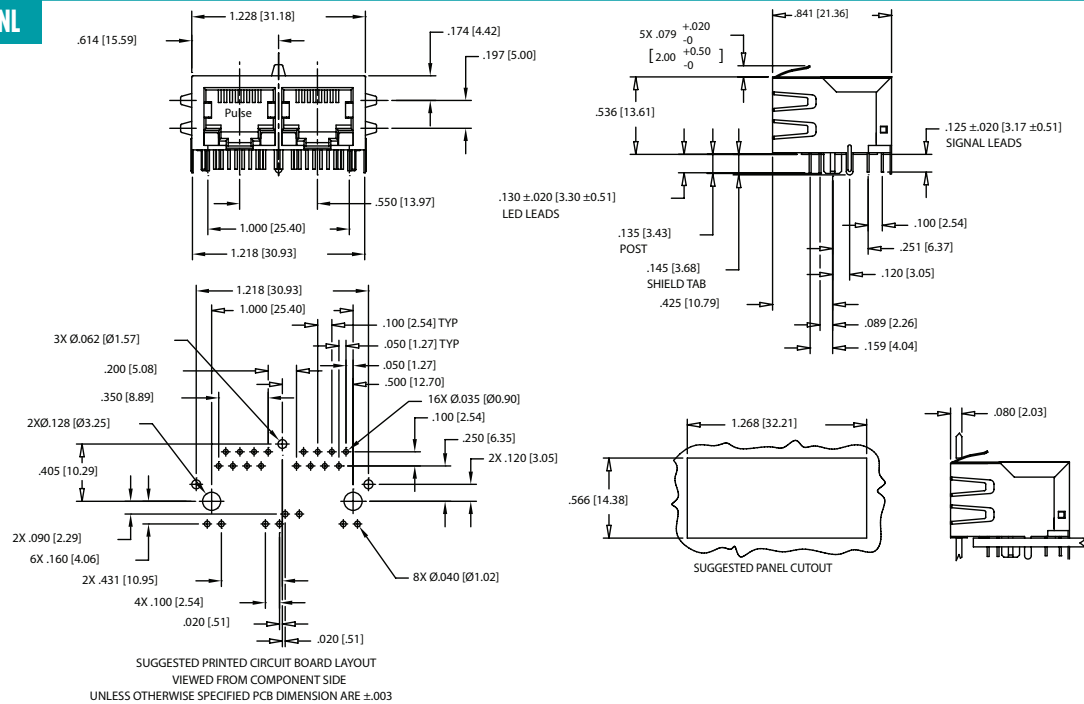
RJ45 Material Specification

| Part Number | Shield | | Contact | | | Housing | | |
|-------------|----------|--|-----------------|---|------------------|---------------|---------------|------------------|
| | Material | Finish | Material | Plating Area | Solder Area | Material | Specification | MSL ² |
| J80 Series | Brass | 10-20μ inches thick Nickel over 10-20μ inches thick nickel | Phosphor Bronze | Nickel underplating and selective gold plating 30μ inches | Tin matte finish | Thermoplastic | UL 94 V-0 | 1 |

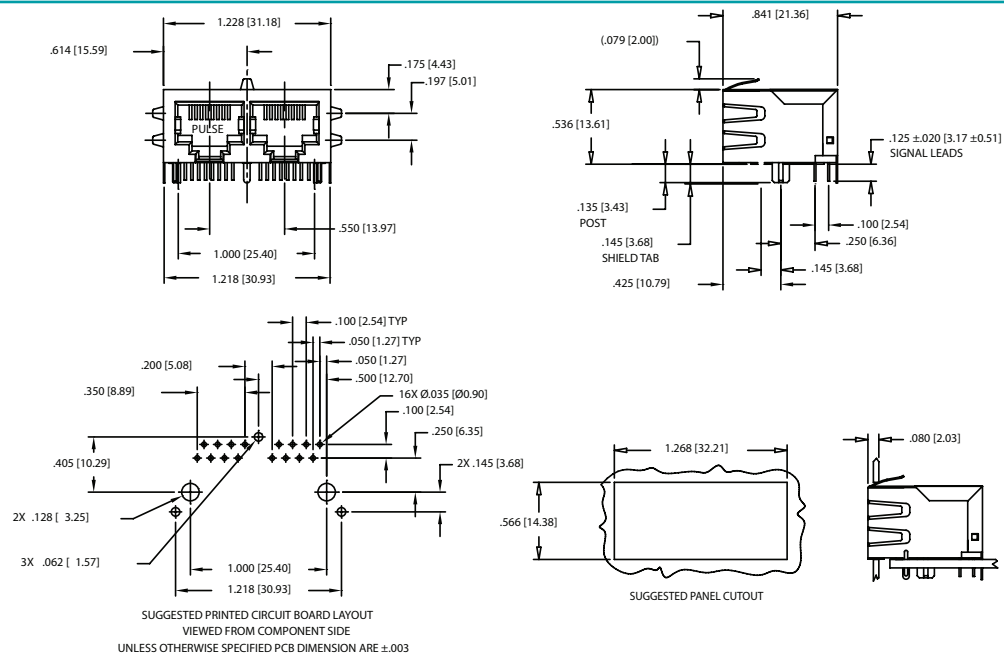
Notes: 1. Connector dimensions comply with FCC dimension requirements 2. MSL = Moisture Sensitivity Level rating from 1 to 5 (highest rating = 1, lowest rating = 5).

Mechanicals

J8064D628ANL, JX80-0019NL



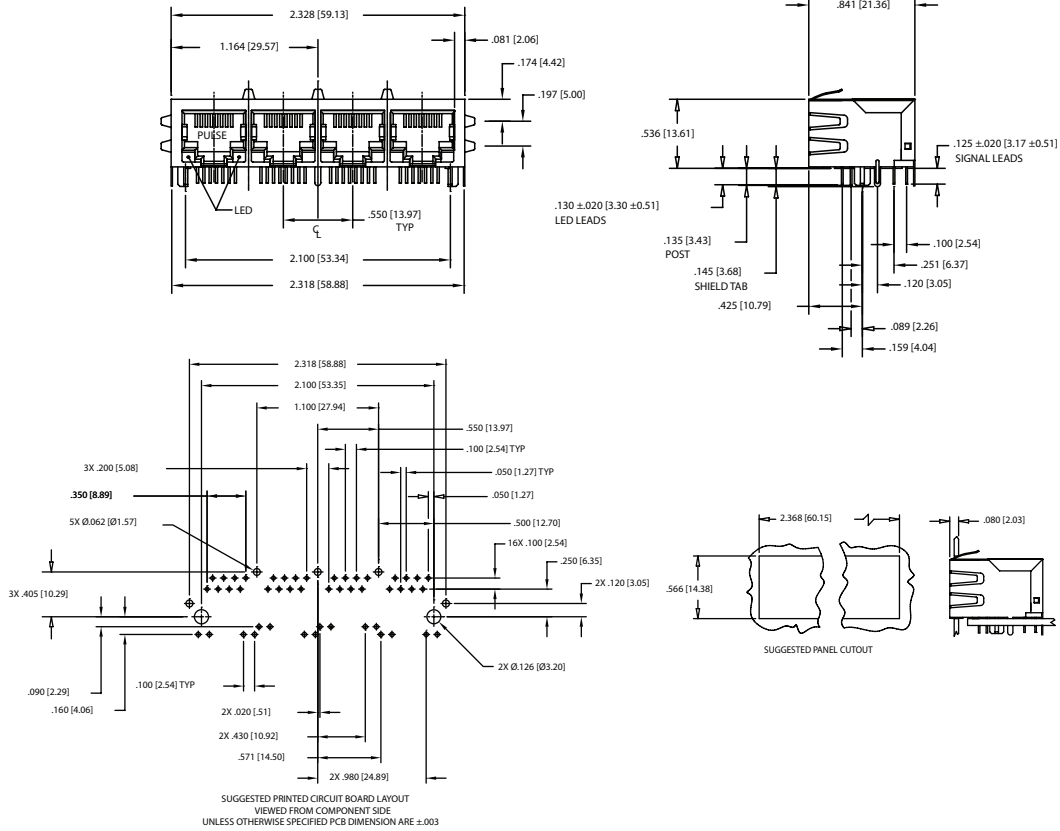
J8064E62NL



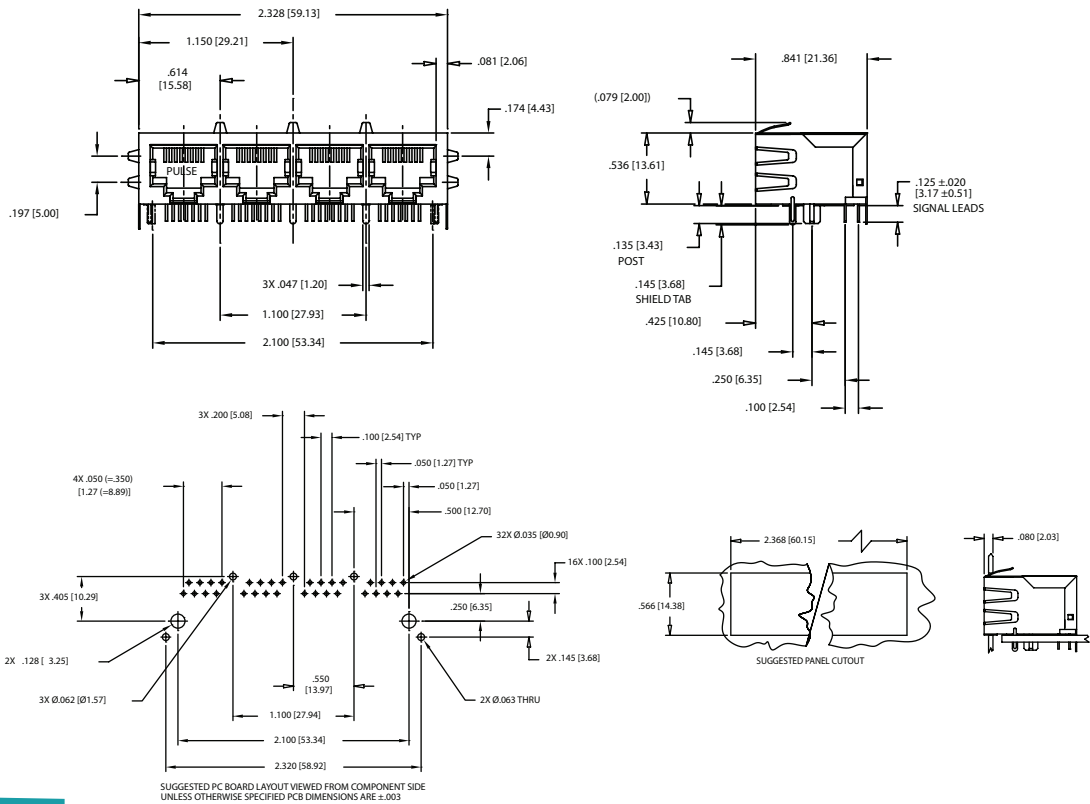
PulseJack™ 1xN Tab-Down

Mechanicals

**J8064D648ANL
JX80-0022NL**



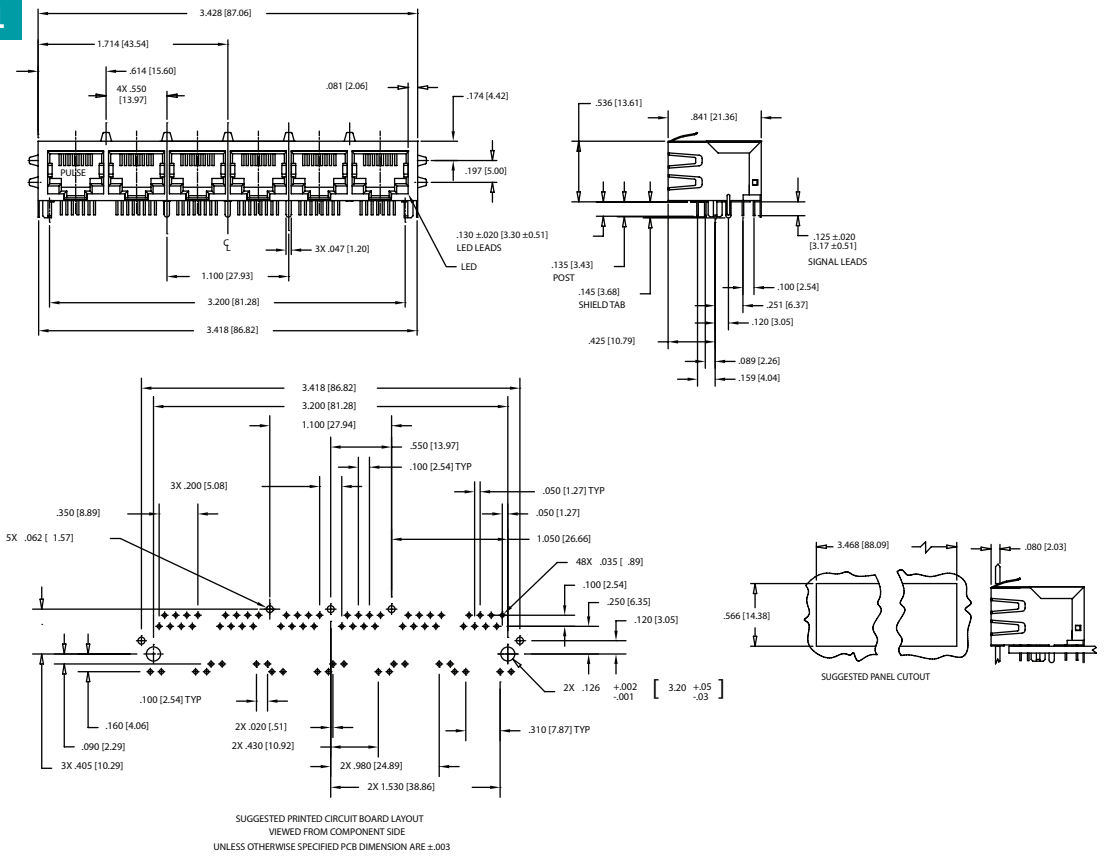
J8064E64NL



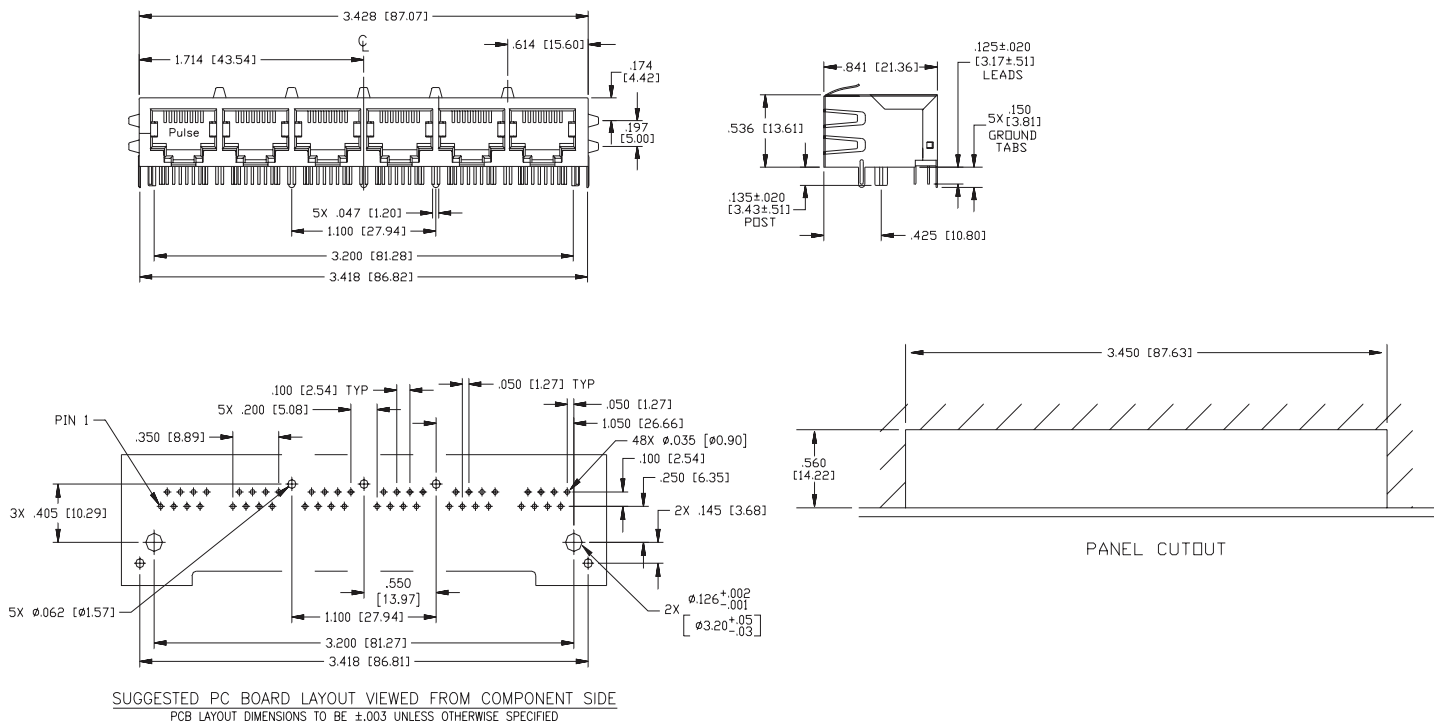
PulseJack™ 1xN Tab-Down

Mechanicals

J8064D668ANL, JX8064D668ANL



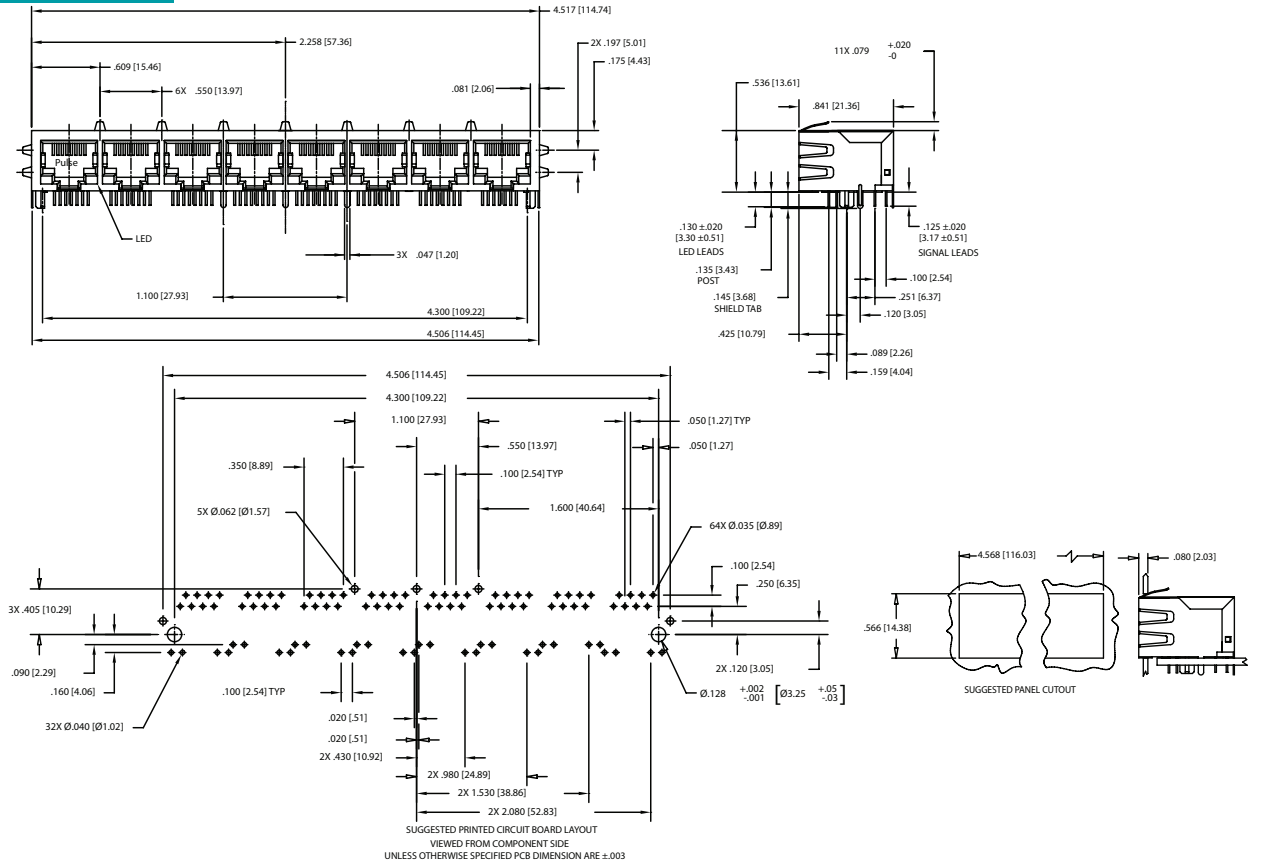
J8064E66NL



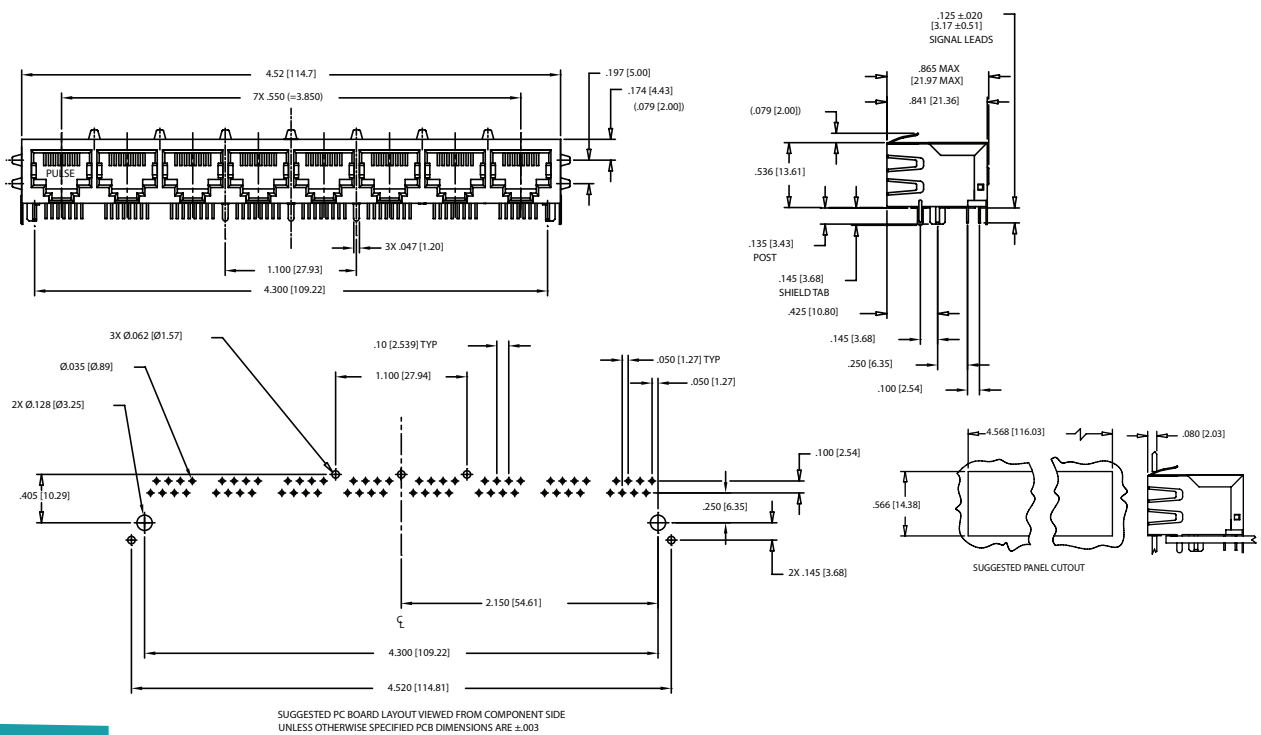
PulseJack™ 1xN Tab-Down

Mechanicals

J8064D688ANL, JX8064D688ANL



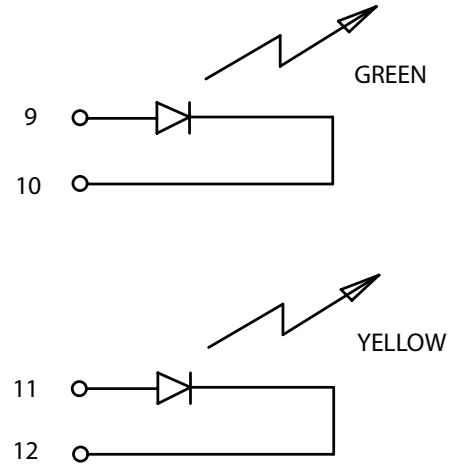
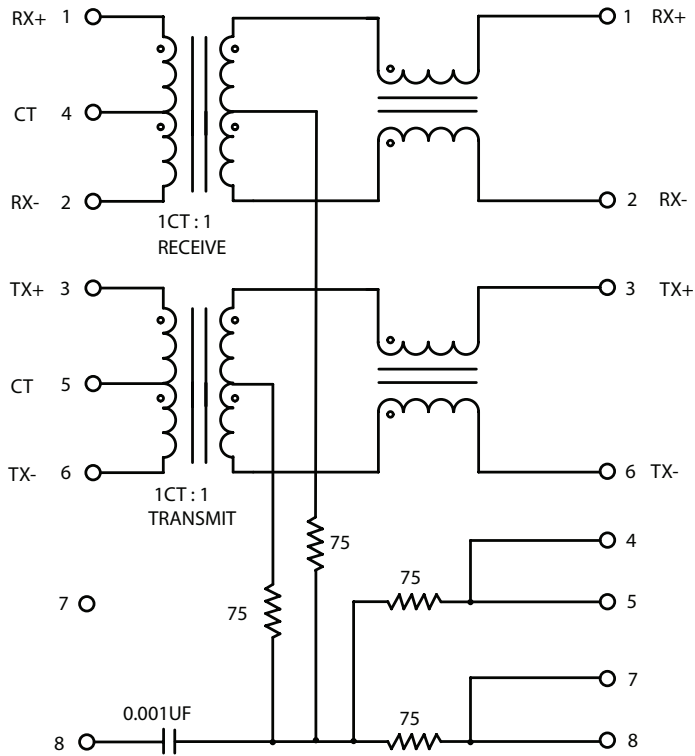
J8064E68NL



PulseJack™

1xN Tab-Down

Schematic for J8 and JX8 Series



NOTE: JX80-0019NL and JX80-0022NL are Gree/Green

| Configuration | 1x2 | 1X4 | 1X6 | 1X8 |
|---------------|----------------------------|----------------------------|----------------------------|----------------------------|
| Part Number | J8064D628ANL J8064E62NL | J8064D648ANL J8064E64NL | J8064D668ANL J8064E66NL | J8064D688ANL J8064E68NL |
| Weight | 10.9 grams | 21.8 grams | 32.7 grams | 43.6 grams |
| Tray | 45/Tray | 15/Tray | 15/Tray | 10/Tray |

X-ON Electronics

Largest Supplier of Electrical and Electronic Components

Click to view similar products for [Modular Connectors / Ethernet Connectors](#) category:

Click to view products by [Pulse manufacturer](#):

Other Similar products are found below :

[8949-H88/06BLKA/SN](#) [74441-0010/BKN](#) [MP1010RX-1000](#) [MP44RX-1000](#) [PHJ-4P4C-1-V-4](#) [PHP-6P6C-5](#) [GAX-3-66](#) [GAX-8-62](#) [GDCX-PA-66-50](#) [GDCX-PN-64](#) [GDCX-PN-66](#) [GDCX-PN-66-50](#) [GDLX-A-66](#) [GDLX-N-66](#) [GDLX-S-66](#) [GDLX-S-88K](#) [GDTX-S-88-50](#) [GDX-PA-1010](#) [GLX-N-1010M-BLK](#) [GLX-S-88M-BLK](#) [GMX-N-1010](#) [GMX-S-1010](#) [GMX-S-66](#) [GMX-SMT4-N-88](#) [GPX-2-64](#) [GSGX-N-2-88](#) [GSGX-N-4-88](#) [GSX-NS2-88-3.05](#) [GSX-NS2-88-3.05-50](#) [GSX-NS-88-3.05-50](#) [PT-108A-8C-UL](#) [PT-J951-8C](#) [PTS-J531-8CS-50UL](#) [1-1775629-2](#) [A-2014-0-4](#) [GWLX-S-88-GR](#) [GWLX-S9-88-YG](#) [DC-1021-8-WH-6](#) [1300530003](#) [1324640-4](#) [RJ11FTVC2G](#) [RJ11FTVC2N](#) [RJFTVX2SA1G](#) [132764-001](#) [1413235](#) [MP88X-1000](#) [MPS88RX-5000](#) [E5288-S000K3-L](#) [E5908-15A242-L](#) [155302-001](#)