






# PulseJack™ 1xN Tab-Down

## Description:

100 Base-TX (Fast Ethernet) RJ45 1xN Tab-DOWN with or without LEDs integrated magnetics connector (ICM) designed to support applications such as: SOHO (ADSL modems), LAN-on-Motherboard (LOM), Hub and Switches.



## Features and Benefits:

-  RoHS peak wave solder temperature rating 260°C
-  Suitable for CAT 5 & 6 Fast Ethernet Cable or better UTP
-  Meets IEEE 802.3 specification
-  350µH minimum OCL with 8mA bias current
-  High performance for maximum EMI suppression

### Electrical Specifications @ 25°C - Operating Temperature 0°C to +70°C

| RoHS Compliant Part Number | Turns Ratio |         | Number of Ports | LEDs <sup>1</sup> L/D | Insertion Loss TX/RX (dB TYP) | Return Loss (dB TYP) 100Ω (± 15 Ω) |          |        |           | Crosstalk (dB TYP) |           |            | Common Mode Rejection (dB TYP) |            | Hipot (VDC MIN)<br>@ 50/60 Hz<br>1 minute |
|----------------------------|-------------|---------|-----------------|-----------------------|-------------------------------|------------------------------------|----------|--------|-----------|--------------------|-----------|------------|--------------------------------|------------|---|
|                            | TX          | RX      |                 |                       |                               | 1-100 MHz                          | 1-10 MHz | 30 MHz | 60-80 MHz | 1-30 MHz           | 30-60 MHz | 60-100 MHz | 1-50 MHz                       | 50-130 MHz |   |
| J8064D628ANL               | 1CT:1CT     | 1CT:1CT | 1x2             | G/Y                   | -1.0                          | -20                                | -16      | -12    | -40       | -35                | -30       | -30        | -20                            | 2250       |   |
| JX80-0019NL <sup>2</sup>   | 1CT:1CT     | 1CT:1CT | 1x2             | G/G                   | -1.0                          | -20                                | -16      | -12    | -40       | -35                | -30       | -30        | -20                            | 2250       |   |
| J8064D648ANL               | 1CT:1CT     | 1CT:1CT | 1x4             | G/Y                   | -1.0                          | -20                                | -16      | -12    | -40       | -35                | -30       | -30        | -20                            | 2250       |   |
| JX80-0022NL <sup>2</sup>   | 1CT:1CT     | 1CT:1CT | 1x4             | G/G                   | -1.0                          | -20                                | -16      | -12    | -40       | -35                | -30       | -30        | -20                            | 2250       |   |
| J8064D668ANL               | 1CT:1CT     | 1CT:1CT | 1x6             | G/Y                   | -1.0                          | -20                                | -16      | -12    | -40       | -35                | -30       | -30        | -20                            | 2250       |   |
| JX8064D668ANL <sup>2</sup> | 1CT:1CT     | 1CT:1CT | 1x6             | G/Y                   | -1.0                          | -20                                | -16      | -12    | -40       | -35                | -30       | -30        | -20                            | 2250       |   |
| J8064D688ANL               | 1CT:1CT     | 1CT:1CT | 1x8             | G/Y                   | -1.0                          | -20                                | -16      | -12    | -40       | -35                | -30       | -30        | -20                            | 2250       |   |
| JX8064D688ANL <sup>2</sup> | 1CT:1CT     | 1CT:1CT | 1x8             | G/Y                   | -1.0                          | -20                                | -16      | -12    | -40       | -35                | -30       | -30        | -20                            | 2250       |   |
| J8064E62NL                 | 1CT:1CT     | 1CT:1CT | 1x2             | None                  | -1.0                          | -20                                | -16      | -12    | -40       | -35                | -30       | -30        | -20                            | 2250       |   |
| J8064E64NL                 | 1CT:1CT     | 1CT:1CT | 1x4             | None                  | -1.0                          | -20                                | -16      | -12    | -40       | -35                | -30       | -30w       | -20                            | 2250       |   |
| J8064E66NL                 | 1CT:1CT     | 1CT:1CT | 1x6             | None                  | -1.0                          | -20                                | -16      | -12    | -40       | -35                | -30       | -30        | -20                            | 2250       |   |
| J8064E68NL                 | 1CT:1CT     | 1CT:1CT | 1x8             | None                  | -1.0                          | -20                                | -16      | -12    | -40       | -35                | -30       | -30        | -30                            | 2250       |   |

Notes: 1. LEDs Left/Right: G = green; Y = yellow 2. Operating temperature: -40°C to +85°C

### RJ45 Durability Test Rating

| Part Number | Mating Force (MAX) | Unmating Force (MAX) | Durability     | Plug to Jack Retention (MIN) |
|-------------|--------------------|----------------------|----------------|------------------------------|
| J80 Series  | 5 lbs./2.268 kgs.  | 5 lbs./2.268 kgs.    | 750 Insertions | 20 lbs./9.072 kgs.           |

# PulseJack™

## 1xN Tab-Down

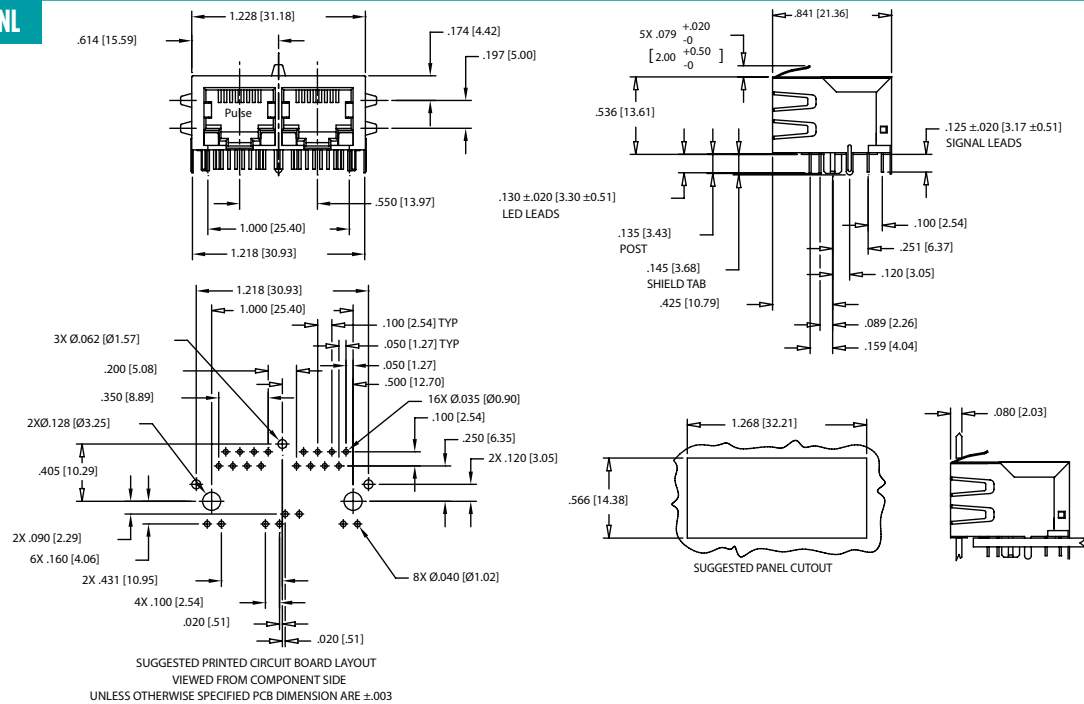
### RJ45 Material Specification

| Part Number | Shield   |  | Contact         |   |                  | Housing       |               |                  |
|-------------|----------|--|-----------------|---|------------------|---------------|---------------|------------------|
|             | Material | Finish   | Material        | Plating Area  | Solder Area      | Material      | Specification | MSL <sup>2</sup> |
| J80 Series  | Brass    | 10-20μ inches thick Nickel over 10-20μ inches thick nickel | Phosphor Bronze | Nickel underplating and selective gold plating 30μ inches | Tin matte finish | Thermoplastic | UL 94 V-0     | 1                |

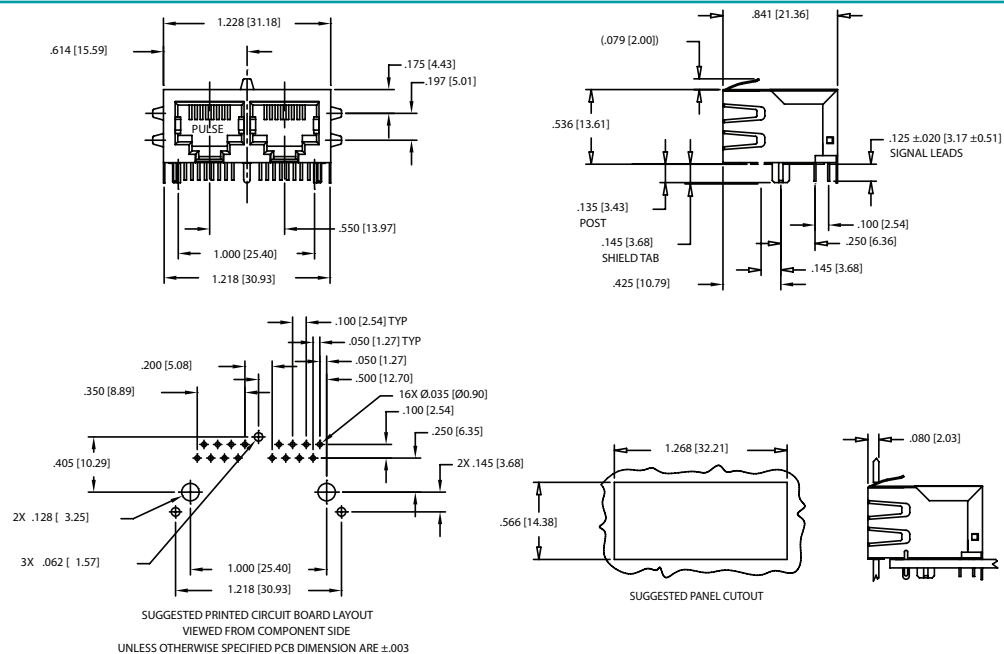
Notes: 1. Connector dimensions comply with FCC dimension requirements 2. MSL = Moisture Sensitivity Level rating from 1 to 5 (highest rating = 1, lowest rating = 5).

### Mechanicals

#### J8064D628ANL, JX80-0019NL



#### J8064E62NL

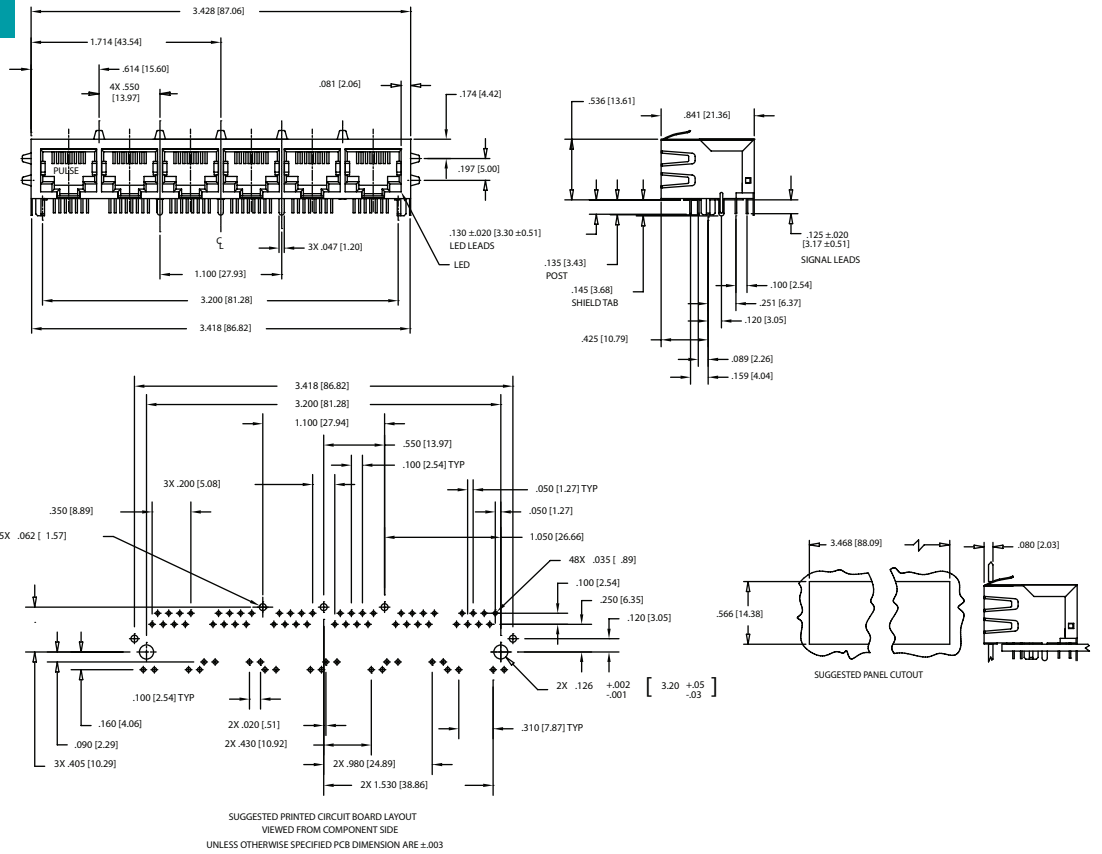




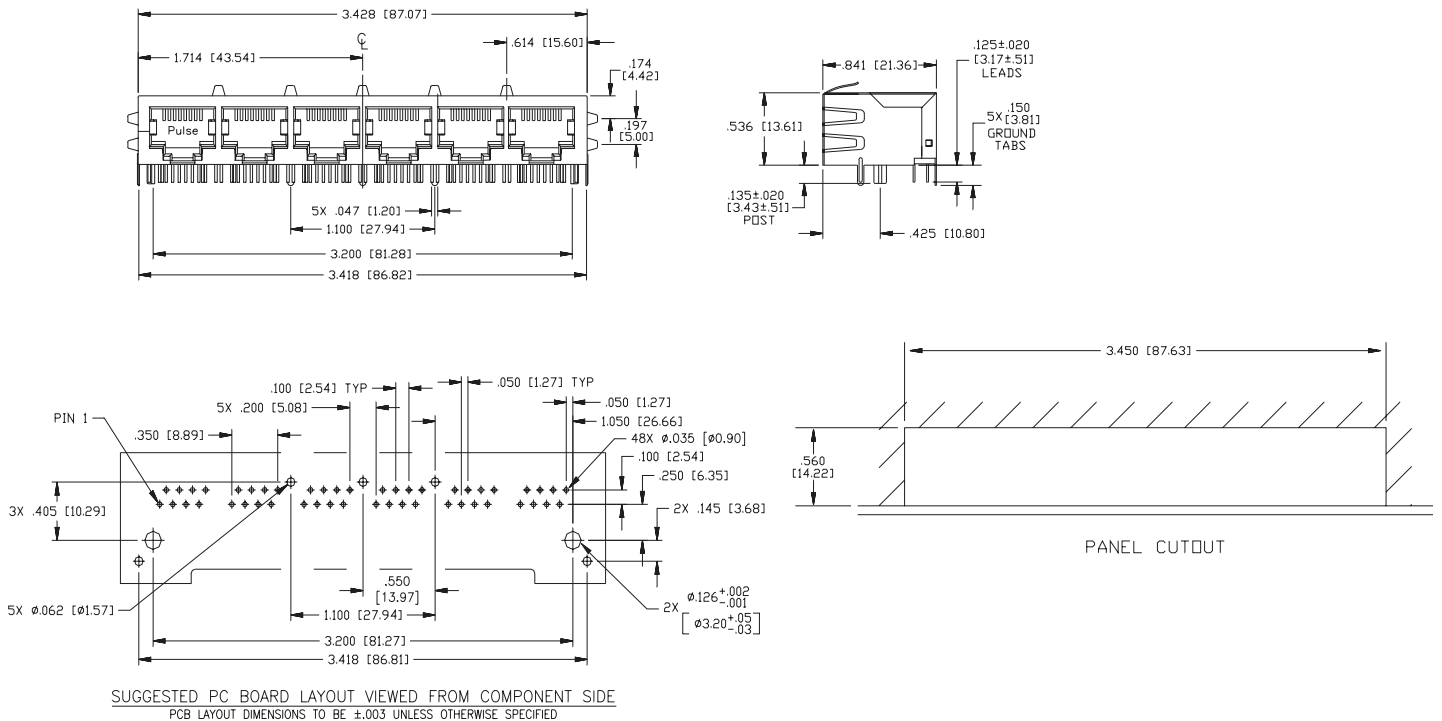
# PulseJack™ 1xN Tab-Down

## Mechanicals

J8064D668ANL, JX8064D668ANL



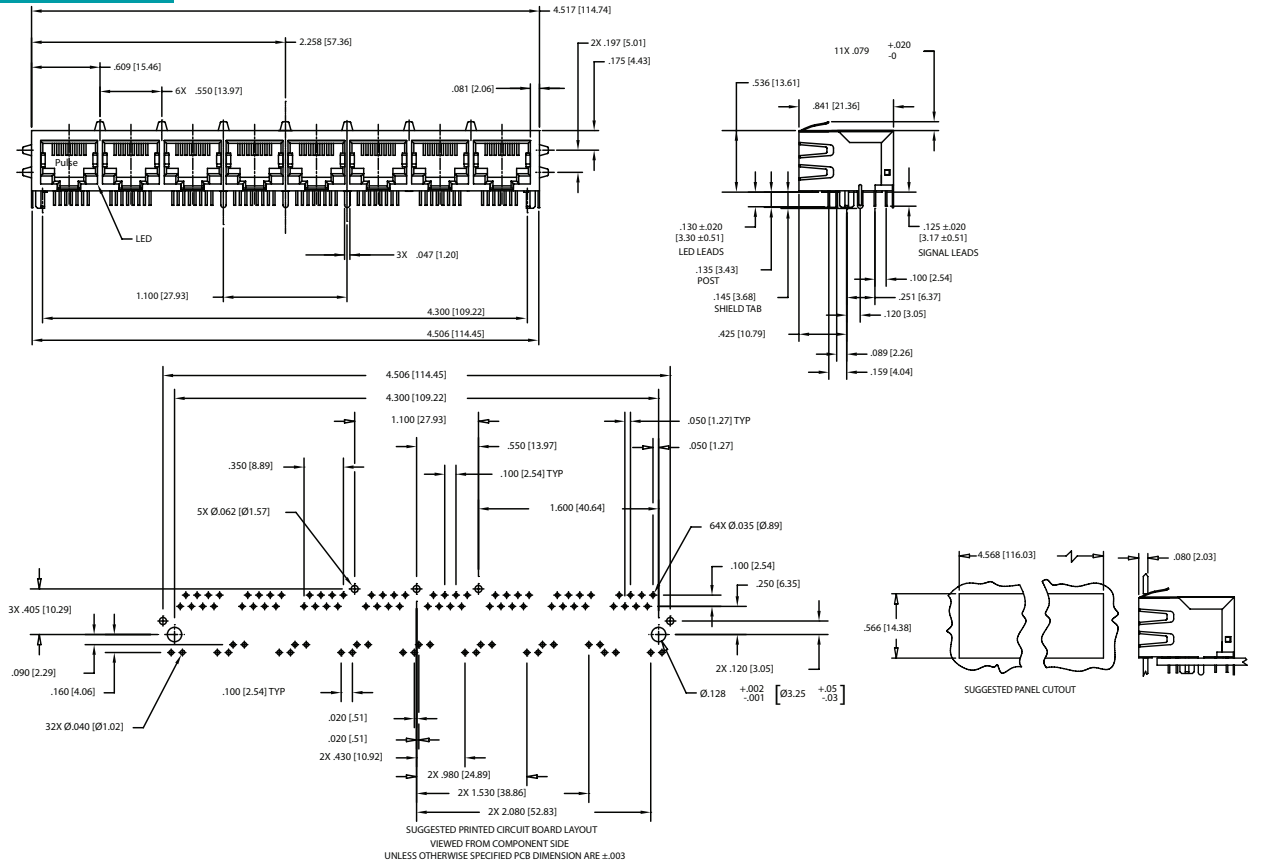
J8064E66NL



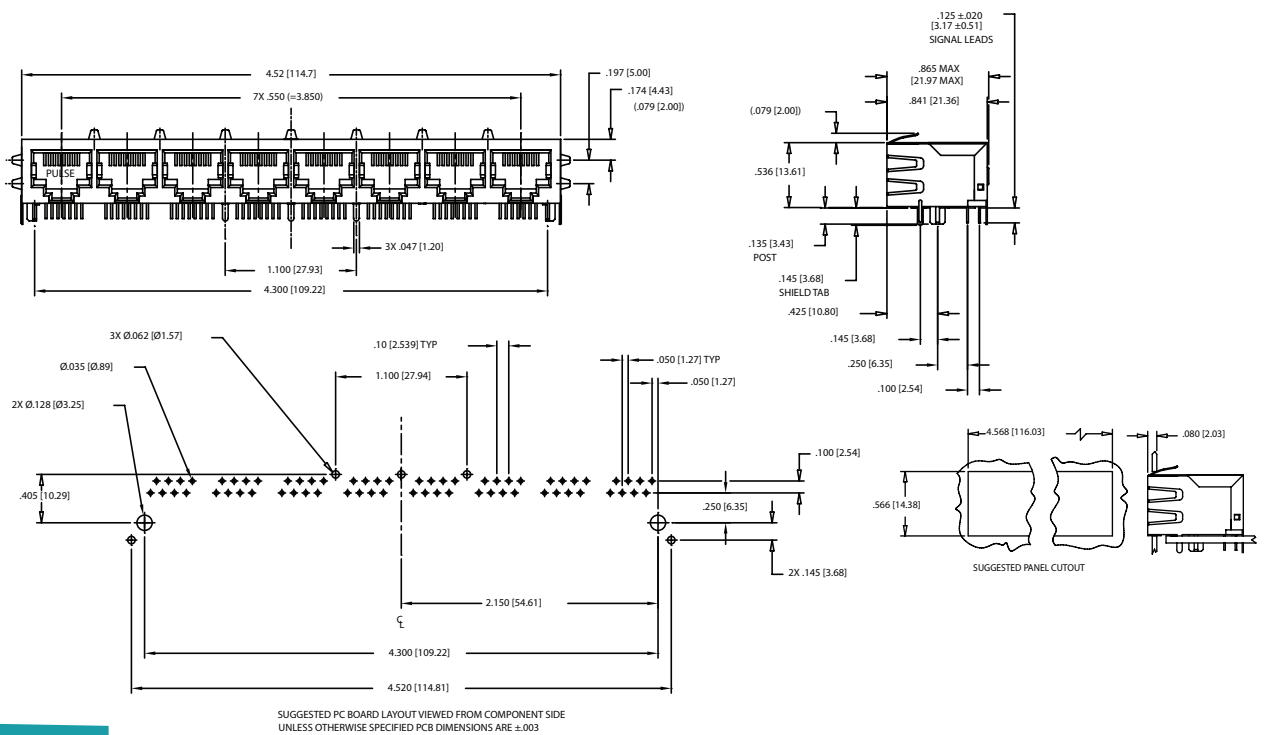
# PulseJack™ 1xN Tab-Down

## Mechanicals

J8064D688ANL, JX8064D688ANL



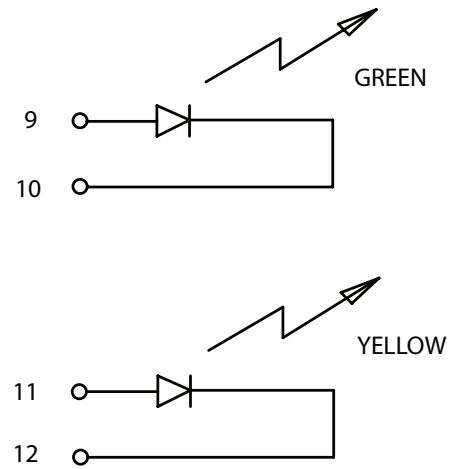
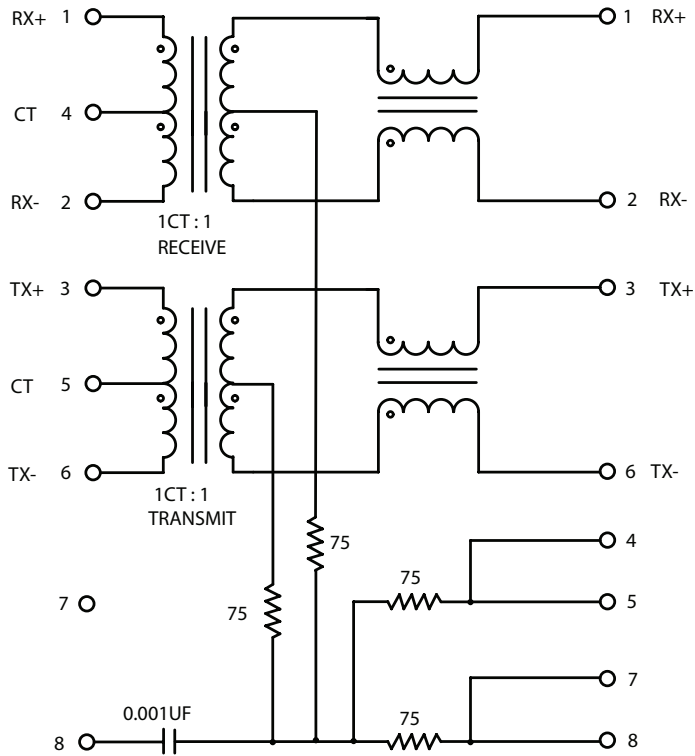
J8064E68NL



# PulseJack™

## 1xN Tab-Down

### Schematic for J8 and JX8 Series



NOTE: JX80-0019NL and JX80-0022NL are Gree/Green

| Configuration | 1x2                        | 1X4                        | 1X6                        | 1X8                        |
|---------------|----------------------------|----------------------------|----------------------------|----------------------------|
| Part Number   | J8064D628ANL<br>J8064E62NL | J8064D648ANL<br>J8064E64NL | J8064D668ANL<br>J8064E66NL | J8064D688ANL<br>J8064E68NL |
| Weight .....  | 10.9 grams                 | 21.8 grams                 | 32.7 grams                 | 43.6 grams                 |
| Tray .....    | 45/Tray                    | 15/Tray                    | 15/Tray                    | 10/Tray                    |

## X-ON Electronics

Largest Supplier of Electrical and Electronic Components

*Click to view similar products for [Modular Connectors](#) / [Ethernet Connectors](#) category:*

*Click to view products by [Pulse manufacturer](#):*

Other Similar products are found below :

[RJE231881317T](#) [MP1010RX-1000](#) [MP44RX-1000](#) [GAX-3-66](#) [GAX-8-62](#) [93606-0253](#) [GD-A-44](#) [GDCX-PA-66-50](#) [GDCX-PN-64](#) [GDCX-PN-66](#) [GDCX-PN-66-50](#) [GDLX-A-66](#) [GDLX-A-88](#) [GDLX-N-66](#) [GDLX-S-66](#) [GDLX-S-88K](#) [GDTX-S-88-50](#) [GDX-PA-1010](#) [GLX-N-1010M-BLK](#) [GLX-S-88M-BLK](#) [GMX-N-1010](#) [GMX-S-1010](#) [GMX-S-66](#) [GMX-SMT2-N-1010](#) [GMX-SMT2-N-64-50](#) [GMX-SMT2-N-88](#) [GMX-SMT2-S6-88](#) [GMX-SMT4-N-88](#) [GPX-2-64](#) [GRT1-BT1-5](#) [GSGX-N-2-88](#) [GSX-NS2-88-3.05](#) [GSX-NS2-88-3.05-50](#) [GSX-NS-88-3.05-30](#) [GSX-NS-88-3.05-50](#) [GSX-NS-88-3.68](#) [1-1775629-2](#) [GWLX-S-88-GR](#) [GWLX-S9-88-YG](#) [1300500326](#) [1300500227](#) [1300530003](#) [1300570002](#) [1324640-4](#) [RJ11FTVC2G](#) [RJ11FTVC2N](#) [RJFTVX2SA1G](#) [132764-001](#) [1400000](#) [1413235](#)