





Shielded Drum Core Inductor

PA4303.XXXNLT & PA4304.XXXNLT Series



-  **Height:** 4.5mm and 6.0mm Max
-  **Footprint:** 12.5 x 12.5 mm Max
-  **Current Range:** 0.32 to 8.5A
-  **Inductance Range:** 1uH to 1000uH

Electrical Specifications @ 25°C — Operating Temperature -40°C to 125°C

| Pulse Part Number | Inductance (uH) | Rated Current (A) Max | DC Resistance (mΩ) Max | Package Size (mm) |
|-------------------|-----------------|-----------------------|------------------------|-------------------|
| PA4303.102NLT | 1.0 | 7.8 | 8 | 12.5 x 12.5 x 4.5 |
| PA4303.122NLT | 1.2 | 7.5 | 9 | 12.5 x 12.5 x 4.5 |
| PA4303.152NLT | 1.5 | 7.2 | 11 | 12.5 x 12.5 x 4.5 |
| PA4303.182NLT | 1.8 | 6.5 | 12 | 12.5 x 12.5 x 4.5 |
| PA4303.222NLT | 2.2 | 6 | 13 | 12.5 x 12.5 x 4.5 |
| PA4303.272NLT | 2.7 | 5.7 | 16 | 12.5 x 12.5 x 4.5 |
| PA4303.332NLT | 3.3 | 5.4 | 18 | 12.5 x 12.5 x 4.5 |
| PA4303.392NLT | 3.9 | 5.1 | 21 | 12.5 x 12.5 x 4.5 |
| PA4303.472NLT | 4.7 | 4.8 | 22 | 12.5 x 12.5 x 4.5 |
| PA4303.562NLT | 5.6 | 4.3 | 23 | 12.5 x 12.5 x 4.5 |
| PA4303.682NLT | 6.8 | 4.2 | 26 | 12.5 x 12.5 x 4.5 |
| PA4303.822NLT | 8.2 | 4 | 31 | 12.5 x 12.5 x 4.5 |
| PA4303.103NLT | 10 | 3.9 | 39 | 12.5 x 12.5 x 4.5 |
| PA4303.123NLT | 12 | 3.4 | 44 | 12.5 x 12.5 x 4.5 |
| PA4303.153NLT | 15 | 3.2 | 55 | 12.5 x 12.5 x 4.5 |
| PA4303.183NLT | 18 | 2.9 | 65 | 12.5 x 12.5 x 4.5 |
| PA4303.223NLT | 22 | 2.5 | 75 | 12.5 x 12.5 x 4.5 |
| PA4303.273NLT | 27 | 2.25 | 86 | 12.5 x 12.5 x 4.5 |
| PA4303.333NLT | 33 | 2 | 112 | 12.5 x 12.5 x 4.5 |
| PA4303.393NLT | 39 | 1.9 | 121 | 12.5 x 12.5 x 4.5 |
| PA4303.473NLT | 47 | 1.8 | 166 | 12.5 x 12.5 x 4.5 |
| PA4303.563NLT | 56 | 1.7 | 182 | 12.5 x 12.5 x 4.5 |
| PA4303.683NLT | 68 | 1.55 | 205 | 12.5 x 12.5 x 4.5 |
| PA4303.823NLT | 82 | 1.35 | 243 | 12.5 x 12.5 x 4.5 |
| PA4303.104NLT | 100 | 1.2 | 299 | 12.5 x 12.5 x 4.5 |
| PA4303.124NLT | 120 | 1.1 | 358 | 12.5 x 12.5 x 4.5 |
| PA4303.154NLT | 150 | 0.95 | 462 | 12.5 x 12.5 x 4.5 |
| PA4303.184NLT | 180 | 0.85 | 507 | 12.5 x 12.5 x 4.5 |
| PA4303.224NLT | 220 | 0.8 | 663 | 12.5 x 12.5 x 4.5 |
| PA4303.274NLT | 270 | 0.65 | 741 | 12.5 x 12.5 x 4.5 |
| PA4303.334NLT | 330 | 0.55 | 936 | 12.5 x 12.5 x 4.5 |
| PA4303.394NLT | 390 | 0.5 | 1050 | 12.5 x 12.5 x 4.5 |
| PA4303.474NLT | 470 | 0.44 | 1300 | 12.5 x 12.5 x 4.5 |

Shielded Drum Core Inductor

PA4303.XXXNLT & PA4304.XXXNLT Series

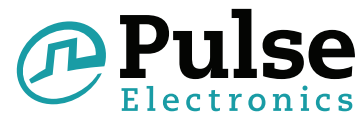


Electrical Specifications @ 25°C — Operating Temperature -40°C to 125°C

| Pulse Part Number | Inductance (µH) | Rated Current (A) Max | DC Resistance (mΩ) Max | Package Size (mm) |
|-------------------|-----------------|-----------------------|------------------------|-------------------|
| PA4303.564NLT | 560 | 0.4 | 1530 | 12.5 x 12.5 x 4.5 |
| PA4303.684NLT | 680 | 0.37 | 1720 | 12.5 x 12.5 x 4.5 |
| PA4303.824NLT | 820 | 0.35 | 2210 | 12.5 x 12.5 x 4.5 |
| PA4303.105NLT | 1000 | 0.32 | 2670 | 12.5 x 12.5 x 4.5 |
| PA4304.102NLT | 1.0 | 8.5 | 11 | 12.5 x 12.5 x 6.0 |
| PA4304.122NLT | 1.2 | 8 | 12 | 12.5 x 12.5 x 6.0 |
| PA4304.152NLT | 1.5 | 7.5 | 13 | 12.5 x 12.5 x 6.0 |
| PA4304.182NLT | 1.8 | 7 | 14 | 12.5 x 12.5 x 6.0 |
| PA4304.222NLT | 2.2 | 6.5 | 15.5 | 12.5 x 12.5 x 6.0 |
| PA4304.272NLT | 2.7 | 6.1 | 16.5 | 12.5 x 12.5 x 6.0 |
| PA4304.332NLT | 3.3 | 5.7 | 18 | 12.5 x 12.5 x 6.0 |
| PA4304.392NLT | 3.9 | 5.25 | 19.5 | 12.5 x 12.5 x 6.0 |
| PA4304.472NLT | 4.7 | 4.7 | 20.5 | 12.5 x 12.5 x 6.0 |
| PA4304.562NLT | 5.6 | 4.7 | 21 | 12.5 x 12.5 x 6.0 |
| PA4304.682NLT | 6.8 | 4.4 | 14.3 | 12.5 x 12.5 x 6.0 |
| PA4304.822NLT | 8.2 | 4.25 | 19.5 | 12.5 x 12.5 x 6.0 |
| PA4304.103NLT | 10 | 4 | 25 | 12.5 x 12.5 x 6.0 |
| PA4304.123NLT | 12 | 3.5 | 27 | 12.5 x 12.5 x 6.0 |
| PA4304.153NLT | 15 | 3.3 | 30 | 12.5 x 12.5 x 6.0 |
| PA4304.183NLT | 18 | 3 | 34 | 12.5 x 12.5 x 6.0 |
| PA4304.223NLT | 22 | 2.8 | 50 | 12.5 x 12.5 x 6.0 |
| PA4304.273NLT | 27 | 2.3 | 51 | 12.5 x 12.5 x 6.0 |
| PA4304.333NLT | 33 | 2.1 | 57 | 12.5 x 12.5 x 6.0 |
| PA4304.393NLT | 39 | 2 | 68 | 12.5 x 12.5 x 6.0 |
| PA4304.473NLT | 47 | 1.8 | 75 | 12.5 x 12.5 x 6.0 |
| PA4304.563NLT | 56 | 1.7 | 110 | 12.5 x 12.5 x 6.0 |
| PA4304.683NLT | 68 | 1.5 | 120 | 12.5 x 12.5 x 6.0 |
| PA4304.823NLT | 82 | 1.4 | 140 | 12.5 x 12.5 x 6.0 |
| PA4304.104NLT | 100 | 1.3 | 160 | 12.5 x 12.5 x 6.0 |
| PA4304.124NLT | 120 | 1.1 | 170 | 12.5 x 12.5 x 6.0 |
| PA4304.154NLT | 150 | 1 | 230 | 12.5 x 12.5 x 6.0 |
| PA4304.184NLT | 180 | 0.9 | 290 | 12.5 x 12.5 x 6.0 |
| PA4304.224NLT | 220 | 0.8 | 400 | 12.5 x 12.5 x 6.0 |
| PA4304.274NLT | 270 | 0.75 | 460 | 12.5 x 12.5 x 6.0 |
| PA4304.334NLT | 330 | 0.68 | 510 | 12.5 x 12.5 x 6.0 |
| PA4304.394NLT | 390 | 0.65 | 690 | 12.5 x 12.5 x 6.0 |
| PA4304.474NLT | 470 | 0.58 | 770 | 12.5 x 12.5 x 6.0 |
| PA4304.564NLT | 560 | 0.54 | 860 | 12.5 x 12.5 x 6.0 |
| PA4304.684NLT | 680 | 0.41 | 1320 | 12.5 x 12.5 x 6.0 |

Shielded Drum Core Inductor

PA4303.XXXNLT & PA4304.XXXNLT Series



Electrical Specifications @ 25°C — Operating Temperature -40°C to 125°C

| Pulse Part Number | Inductance (uH) | Rated Current (A) Max | DC Resistance (mΩ) Max | Package Size (mm) |
|-------------------|-----------------|-----------------------|------------------------|-------------------|
| PA4304.824NLT | 820 | 0.38 | 1850 | 12.5 x 12.5 x 6.0 |
| PA4304.105NLT | 1000 | 0.36 | 2270 | 12.5 x 12.5 x 6.0 |

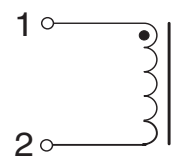
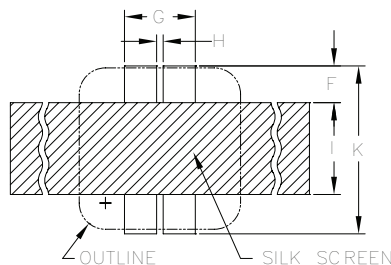
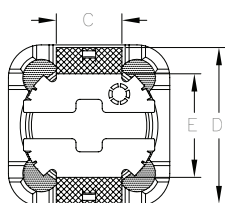
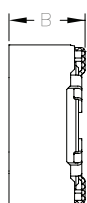
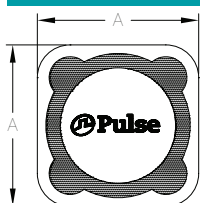
NOTES:

- Inductance tolerance is +/-30% for inductance values between 1uH and 8.2uH and +/-20% for values between 10uH and 1000uH.
- Inductance is measured at 100kHz, 250mV for values between 1uH and 8.2uH and at 1kHz, 250mV for values between 10uH and 1000uH.
- The rated current as listed is the rms or heating current that the part can withstand with acceptable temperature rise in typical applications. At the listed current the inductance typically drops to 85-90% of the no load value when measured at 25C.
- The temperature of the component (ambient plus temperature rise) must be within the stated operating temperature.

Mechanical

Schematic

PA43XX.XXXNLT

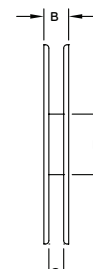
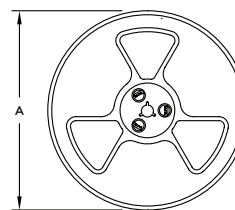
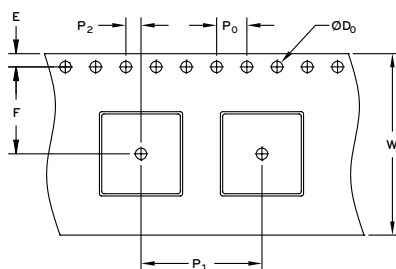
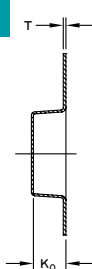


FINAL OUTLINE

SUGGESTED PAD LAYOUT

| Part Number | A (max) | B (max) | C | D | E | F | G | H | I | K |
|---------------|---------|---------|-------|--------|-------|-------|-------|-------|-------|--------|
| PA4303.XXXNLT | 12.5 | 5.0 | (5.0) | (12.0) | (7.6) | (2.8) | (5.4) | (0.5) | (7.0) | (12.8) |
| PA4304.XXXNLT | 12.5 | 6.0 | (5.0) | (12.0) | (7.6) | (2.8) | (5.4) | (0.5) | (7.0) | (12.8) |

TAPE & REEL INFO



SURFACE MOUNTING TYPE, REEL/TAPE LIST

| TYPE | REEL SIZE (mm) | | | | TAPE SIZE (mm) | | | | | | | | QTY PCS/REEL | |
|---------------|----------------|----|------|-----|----------------|------|-----|----|----|----|----|------|-----------------|-----|
| | A | B | G | N | E | F | D0 | P | P0 | P2 | W | T | | K0 |
| PA4303.XXXNLT | Ø330 | 29 | 24.5 | 100 | 1.75 | 11.5 | 1.5 | 16 | 4 | 2 | 24 | 0.35 | 5.1 | 750 |
| PA4304.XXXNLT | Ø330 | 29 | 24.5 | 100 | 1.75 | 11.5 | 1.5 | 16 | 4 | 2 | 24 | 0.35 | 6.1 | 600 |

For More Information

Pulse Worldwide Headquarters

12220 World Trade Drive
San Diego, CA 92128
U.S.A.

Tel: 858 674 8100
Fax: 858 674 8262

Pulse Europe

Zeppelinstrasse 15
71083 Herrenberg
Germany

Tel: 49 7032 7806 0
Fax: 49 7032 7806 12

Pulse China Headquarters

B402, Shenzhen Academy of
Aerospace Technology Bldg.
10th Kejian Road
High-Tech Zone
Nanshan District
Shenzhen, PR China 518057

Tel: 86 755 33966678
Fax: 86 755 33966700

Pulse North China

Room 2704/2705
Super Ocean Finance Ctr.
2067 Yan An Road West
Shanghai 200336
China

Tel: 86 21 62787060
Fax: 86 2162786973

Pulse South Asia

135 Joo Seng Road
#03-02
PM Industrial Bldg.
Singapore 368363

Tel: 65 6287 8998
Fax: 65 6287 8998

Pulse North Asia

3F, No. 198
Zhongyuan Road
Zhongli City
Taoyuan County 320
Taiwan R. O. C.

Tel: 886 3 4356768
Fax: 886 3 4356823 (Pulse)
Fax: 886 3 4356820 (FRE)

Performance warranty of products offered on this data sheet is limited to the parameters specified. Data is subject to change without notice. Other brand and product names mentioned herein may be trademarks or registered trademarks of their respective owners. © Copyright, 2014. Pulse Electronics, Inc. All rights reserved.

X-ON Electronics

Largest Supplier of Electrical and Electronic Components

Click to view similar products for [Pulse manufacturer](#):

Other Similar products are found below :

[ICEFIN806DMN](#) [ICEFIN698/869DMN](#) [PH9085.011NL](#) [PE-0603CD060KTT](#) [H1086NLT](#) [P0182T](#) [PA1494.442NL](#) [PE-0805CD030KTT](#) [PE-53363NLT](#) [23Z106SM-T](#) [HX5400NL](#) [JXD0-4005NL](#) [ST6200QNL](#) [T3001NL](#) [HX2019](#) [PE-67540NL](#) [PE-65968NL](#) [PE-65535NL](#) [T1142NLT](#) [H7019FNL](#) [P0841NL](#) [P0438T](#) [P0584](#) [P0752.474T](#) [P1167.154T](#) [STQN1553-45](#) [JY0-0016NL](#) [JG0-0098NL](#) [JG0-0025NL](#) [J20-0014NL](#) [W1911](#) [HX6101NL](#) [JXD1-0025NL](#) [RO2408NMD](#) [P0469NL](#) [P0841SNLT](#) [PB2134NL](#) [ST2-12B42](#) [PE-0805CM331JTT](#) [PE-51509NL](#) [53119](#) [J3026G01DNL](#) [P0849SNL](#) [W3012-K](#) [HX5020NL](#) [HX5201NL](#) [PE-68210NL](#) [T1124NL](#) [H5004NL](#) [JX30-0005NL](#)