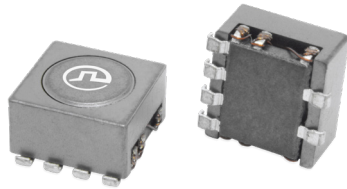


High Frequency Wire Wound Transformers

MiniFlyback Platform - SMT - PH9585.XXXNL



- Ⓢ **Power Range:** Up to 3 W
- Ⓢ **Height:** 3.6 mm Max
- Ⓢ **Footprint:** 6.4 mm x 6.2 mm Max
- Ⓢ **Topology:** Flyback

Electrical Specifications @ 25°C - Operating Temperature -40°C to +125°C				Schematic
PH9585.001NL	INDUCTANCE	1-2	95 ±25% μH	
	Ldc	1-2	65 uH MIN. AT 0.27ADC	
	LK.INDUCTANCE	1-2 WITH 3, 4, 5, 6 SHORTED	1.7 μH MAX	
	DCR	1-2	1.63 Ω MAX	
		3-4	0.80 Ω MAX	
		5-6	0.63 Ω MAX	
HIPOT	1,2,3,4 TO 5,6	2250 VDC, 5S, 0.5mA MAX		
	1,2 TO 3,4	500 VDC, 5S, 0.5mA MAX		
PH9585.002NL	INDUCTANCE	1-2	95 ±25% μH	
	Ldc	1-2	65 uH MIN. AT 0.27ADC	
	LK.INDUCTANCE	1-2 WITH 3, 4, 5, 6 SHORTED	2.5 μH MAX	
	DCR	1-2	1.63 Ω MAX	
		3-4	0.58 Ω MAX	
		5-6	0.35 Ω MAX	
HIPOT	1,2,3,4 TO 5,6	2250 VDC, 5S, 0.5mA MAX		
	1,2 TO 3,4	500 VDC, 5S, 0.5mA MAX		
PH9585.003NL	INDUCTANCE	1-2	95 ±25% μH	
	Ldc	1-2	65 uH MIN. AT 0.27ADC	
	LK.INDUCTANCE	1-2 WITH 3, 4, 5, 6 SHORTED	1.8 μH MAX	
	DCR	1-2	1.63 Ω MAX	
		3-4	0.60 Ω MAX	
		5-6	0.63 Ω MAX	
HIPOT	1,2,3,4 TO 5,6	2250 VDC, 5S, 0.5mA MAX		
	1,2 TO 3,4	500 VDC, 5S, 0.5mA MAX		
PH9585.004NL	INDUCTANCE	1-2	95 ±25% μH	
	Ldc	1-2	65 uH MIN. AT 0.27ADC	
	LK.INDUCTANCE	1-2 WITH 3, 4, 5, 6 SHORTED	1.8 μH MAX	
	DCR	1-2	1.63 Ω MAX	
		3-4	0.45 Ω MAX	
		5-6	1.1 Ω MAX	
HIPOT	1,2,3,4 TO 5,6	2250 VDC, 5S, 0.5mA MAX		
	1,2 TO 3,4	500 VDC, 5S, 0.5mA MAX		

High Frequency Wire Wound Transformers

MiniFlyback Platform - SMT - PH9585.XXXNL



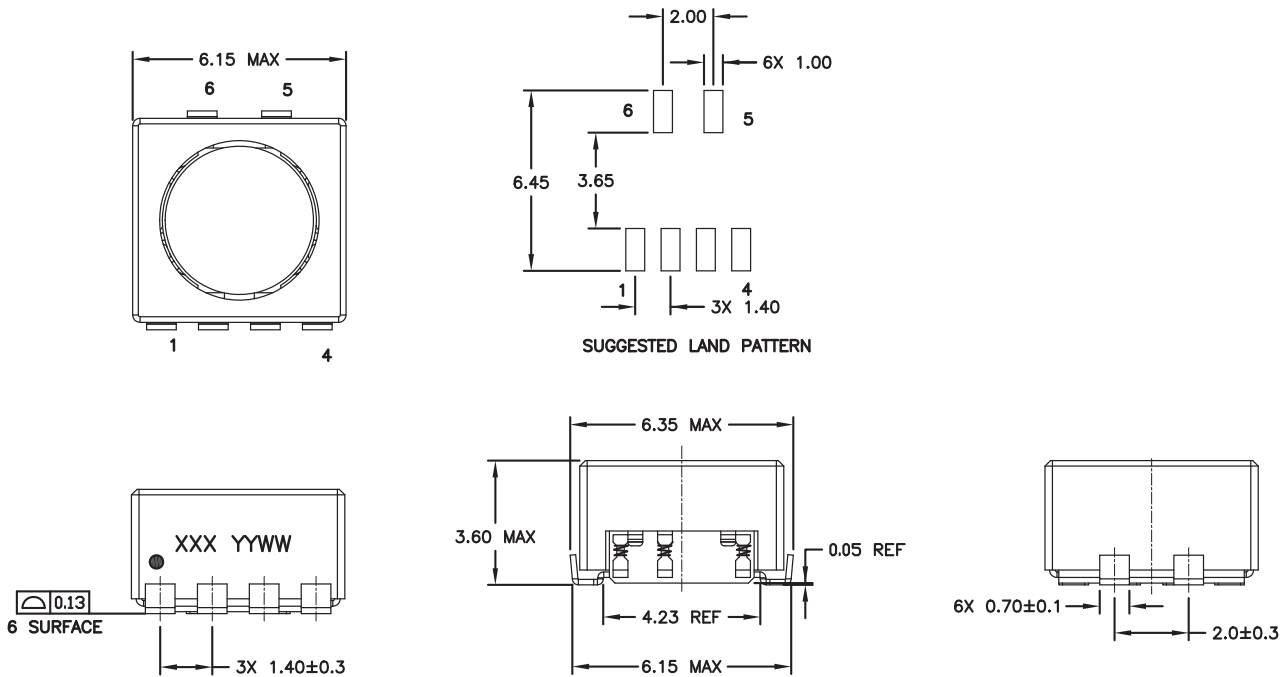
Notes:

1. The temperature of the component (ambient plus temperature rise) must be within the stated operating temperature range.
2. For flyback topology applications, it is necessary to ensure that the transformer will not saturate in the application. The peak flux density (Bpk) should remain below 260mT. To calculate the peak flux density use the following formula:
 $B_{pk} (mT) = 950 * I_{pk}(A)$
3. In high volt- μ sec applications, it is important to calculate the core loss of the transformer. Approximate transformer core loss can be calculated as:
 $Core Loss (W) = 8.80E-13 * (Freq_kHz)^{1.28} * (\Delta B_mT)^{2.36}$
 where ΔB can be calculated as:
 For Flyback Topology: $\Delta B_mT = 950 * \Delta I(A)$

- Temperature rise can be calculated as:
 $Temperature Rise (^{\circ}C) = 150 * (Core Loss(W) + Copper Loss (W))$
 where Copper Loss can use the following formula:
 $Copper Loss (W) = I_{rms_Primary}^2 * DCR_Primary + I_{rms_Secondary}^2 * DCR_Secondary$
4. Optional Tape & Reel packaging can be ordered by adding a "T" suffix to the part number (i.e. (PH9585.001NL becomes PH9585.001NLT). Pulse complies with industry standard tape and reel specification EIA481. The tape and reel for this product has a width (W=16mm), pitch (P_i=12mm) and depth (K_o=3.6mm).

Mechanical

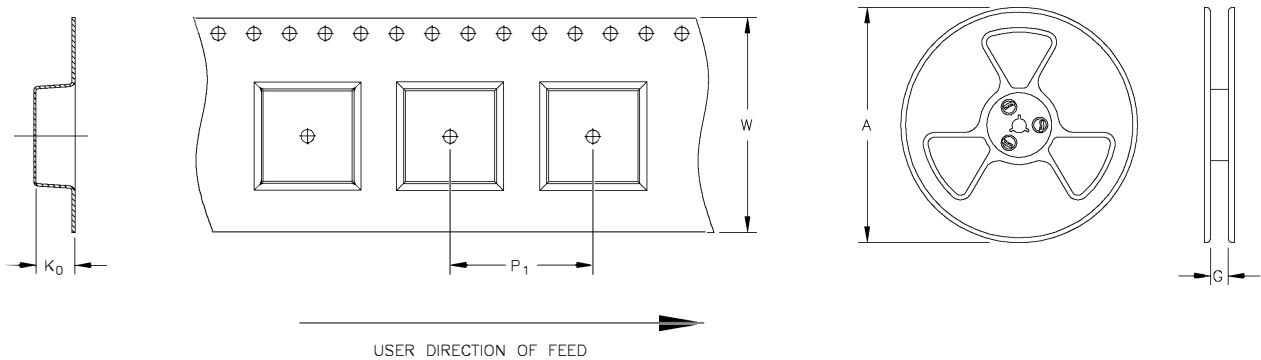
PH9585.XXXNL



High Frequency Wire Wound Transformers

MiniFlyback Platform - SMT - PH9585.XXXNL

TAPE & REEL INFO



SURFACE MOUNTING TYPE, REEL/TAPE LIST						
PART NUMBER	REEL SIZE (mm)		TAPE SIZE (mm)			QTY
	A	G	P ₁	W	K ₀	PCS/REEL
PH9585.XXXNL	Ø330	12	12	16	3.6	1200

For More Information:

Americas - prodinfo_power@pulseelectronics.com | Europe - power-apps-europe@pulseelectronics.com | Asia - power-apps-asia@pulseelectronics.com

Performance warranty of products offered on this data sheet is limited to the parameters specified. Data is subject to change without notice. Other brand and product names mentioned herein may be trademarks or registered trademarks of their respective owners. © Copyright, 2021. Pulse Electronics, Inc. All rights reserved.

X-ON Electronics

Largest Supplier of Electrical and Electronic Components

Click to view similar products for [Power Transformers](#) category:

Click to view products by [Pulse](#) manufacturer:

Other Similar products are found below :

[F-181U](#) [F-204U](#) [F-206U](#) [F-227X](#) [F-23U](#) [F-264U](#) [F-267U](#) [F-35U](#) [F-412X](#) [F-55X-1](#) [F-68U](#) [F-71U](#) [F-72Z](#) [F-74U](#) [F-83A](#) [F-84AC](#) [F-85U](#) [F-86U](#) [F-9U](#) [PCT-02](#) [PCT-03](#) [PCT6630](#) [PF2.5-20](#) [PPC-14](#) [PPC-46](#) [PPC-58](#) [PSD4-36](#) [PSS2-16](#) [GSD-150](#) [11E009H](#) [11E012H](#) [A41-43-20A20](#)
[DSW-2120](#) [DSW-224](#) [DSW-228](#) [DSW-310](#) [DSW-3120](#) [DSW-320](#) [DSW-356](#) [DSW-4120](#) [DSW-448](#) [DSW-456](#) [DSW-528](#) [DSW-556](#)
[DSW-610](#) [DSW-6120](#) [DSW-624](#) [DSWC-712](#) [EN216B](#) [N-39X](#)