

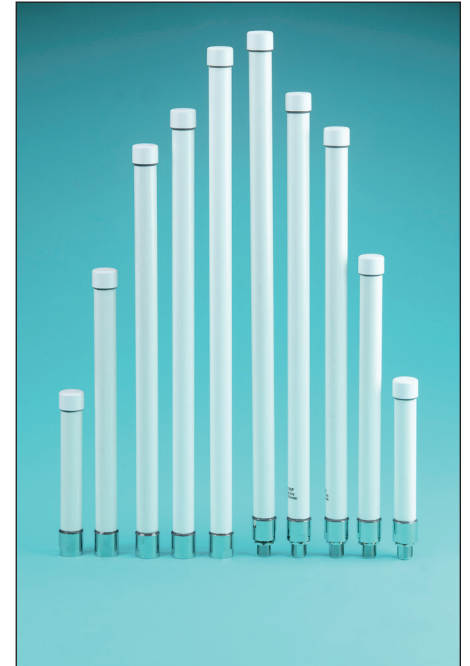
# Radome Omni Antennas

Pulse/Larsen continues to expand its range of rugged outdoor antennas known as the Radome Omni Series. Radome Omnis are designed for harsh outdoor environments to provide excellent mechanical stability and UV/IP-67 protection to ensure a long, reliable, maintenance-free life. The upper end of the operating temperature range is 185°F (85°C) and the structural loading withstands up to 150 mph winds. The series is designed for installation on a mast or wall using an FB2BRACKET or FB3BRACKET

All Pulse/Larsen Radome Omnis have a VSWR of 2:1 and a power rating of 20 Watts. Radomes are made of Pultruded Fiberglass (UV-protected). Radome Omnis come in a variety of frequencies including 2.4, 4.9 and 5.xx GHz and multiband covering 806-960/1710-2170 MHz. Gains range from 4 dBi to 10 dBi. Most models are available with either an N Male or N Female connector. More options for downtilt, uptilt and dual band WLAN versions are in development.

Key applications include:

- WLAN
- MESH Networks
- Access Points, Public Safety
- Femtocells,
- GSM/3G Repeaters
- Base Stations



MODEL	FREQUENCY (MHz)	GAIN (dBi)	HEIGHT (in/cm)	CONNECTOR
<b>Single Band</b>				
RO17102NM	1710 - 2170	2	4.5 / 115	N Male
RO2404NM	2400 - 2485	4	11.5 / 29.2	N Male
RO2406NF	2400 - 2500	6	11.5 / 29.2	N Female
RO2406NM	2400 - 2500	6	11.5 / 29.2	N Male
RO2408NF	2400 - 2500	8	20 / 50.8	N Female
RO2408NM	2400 - 2500	8	20 / 50.8	N Male
RO2408NFD (downtilt)	2400 - 2500	8	20 / 50.8	N Female
RO2408NMD (downtilt)	2400 - 2500	8	20 / 50.8	N Male
RO2408NFU (uptilt)	2400 - 2500	8	20 / 50.8	N Female
RO2408NMU (uptilt)	2400 - 2500	8	20 / 50.8	N Male
RO2474NM	2400 - 2485	7.4	16.5 / 41.9	N Male
RO4910NF	4940 - 4990	10	18 / 45.7	N Female
RO4910NM	4940 - 4990	10	18 / 45.7	N Male
RO5206NF	5150 - 5350	6	6.75 / 17.2	N Female
RO5805NF	5150 - 5876	5	6.6 / 16.8	N Female
RO5805NM	5150 - 5876	5	6.6 / 16.8	N Male
RO5808NF	5150 - 5825	8	14.5 / 36.75	N Female
RO5808NM	5150 - 5825	8	14.5 / 36.75	N Male
<b>Multi Band</b>				
RO8061/21702NF	806-960 / 1710-2170	1/2	8.5 / 21.6	N Female
RO8061/21702NM	806-960 / 1710-2170	1/2	8.5 / 21.6	N Male
RO8063/21704NF	806-960 / 1710-2170	3/4	15.3 / 38.9	N Female
RO8063/21704NM	806-960 / 1710-2170	3/4	15.3 / 38.9	N Male
W5030	2.4-2.5 / 5.15-5.875	4/6	6.8 / 173	N Male

## X-ON Electronics

Largest Supplier of Electrical and Electronic Components

*Click to view similar products for [Antennas](#) category:*

*Click to view products by [Pulse](#) manufacturer:*

Other Similar products are found below :

[CCT FM1](#) [ABFT](#) [AD-NM-SMAF 001-0021](#) [CTC110](#) [MAF94149](#) [EXE902SF](#) [MMCX-SMA-100](#) [PDQ24496-91NF](#) [GAN30084EU](#) [930-033-R](#) [A08-HABUF-P5I](#) [AAF95035](#) [DG-ANT-20DP-BG-B](#) [APAMPGJ-141](#) [1513563-1](#) [OF86315-FNF](#) [OP24516DS-91NM](#) [A09-HASM-7](#) [EXE902MD](#) [EXE902SM](#) [SPDA17806/2170LAR](#) [APAMPG-117](#) [GPS1575SP26-004](#) [GPS15MGSMA](#) [CMD69273P-30NF](#) [CMQ69273-30NF](#) [RD2458-5-OTDR-NM](#) [RD2458-5-RSMA](#) [TRAB24/49003](#) [W4120ER5000](#) [W6102B0100](#) [YE572113-30RSMM](#) [108-00014-50](#) [SPDA17RP918](#) [OP24516SX-91NM](#) [OP24516SX-91RSMM](#) [CMQ69273P-30NF](#) [CMS69273-30NF](#) [CMS69273P-30NF](#) [TRAB24003N](#) [TRAB24003NP](#) [TRAB8213NP](#) [TRAB8903](#) [A09-Y8NF](#) [A09-Y11NF](#) [A09-HSM-7](#) [A09-F8NF-M](#) [A09-F5NF-M](#)