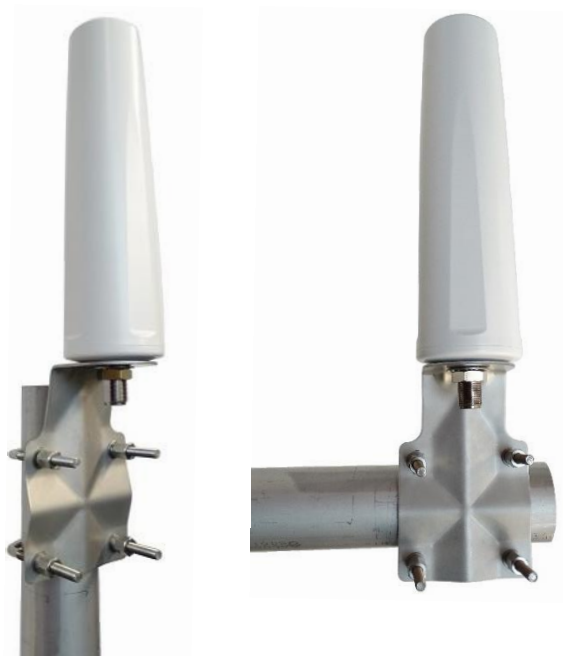







Outdoor Omni Directional Dipole with Bracket

RO450NFKIT - 410-520 MHz



Features & Applications:

-  LTE 450 MHz Access
-  Base station
-  Ground independent
-  Mounting Bracket included
(720-hour salt spray rating)
-  Security and CCTV

Electrical specifications @ 25° C

Frequency Band – 410-520 MHz

Antenna type ¹	Nominal Impedance	Polarization	Radiation pattern	Power withstanding	DC Ground
Dipole	50Ω	Vertical	Omni	60W	Yes

Frequency (MHz)	410-520
VSWR	1.5:1 Typical (2:1 Max)
Average Peak Gain (dBi)	2.3
Average Efficiency (%)	92
HPBW Vertical Plane (°)	74

Mechanical Specifications

RO450NFKIT

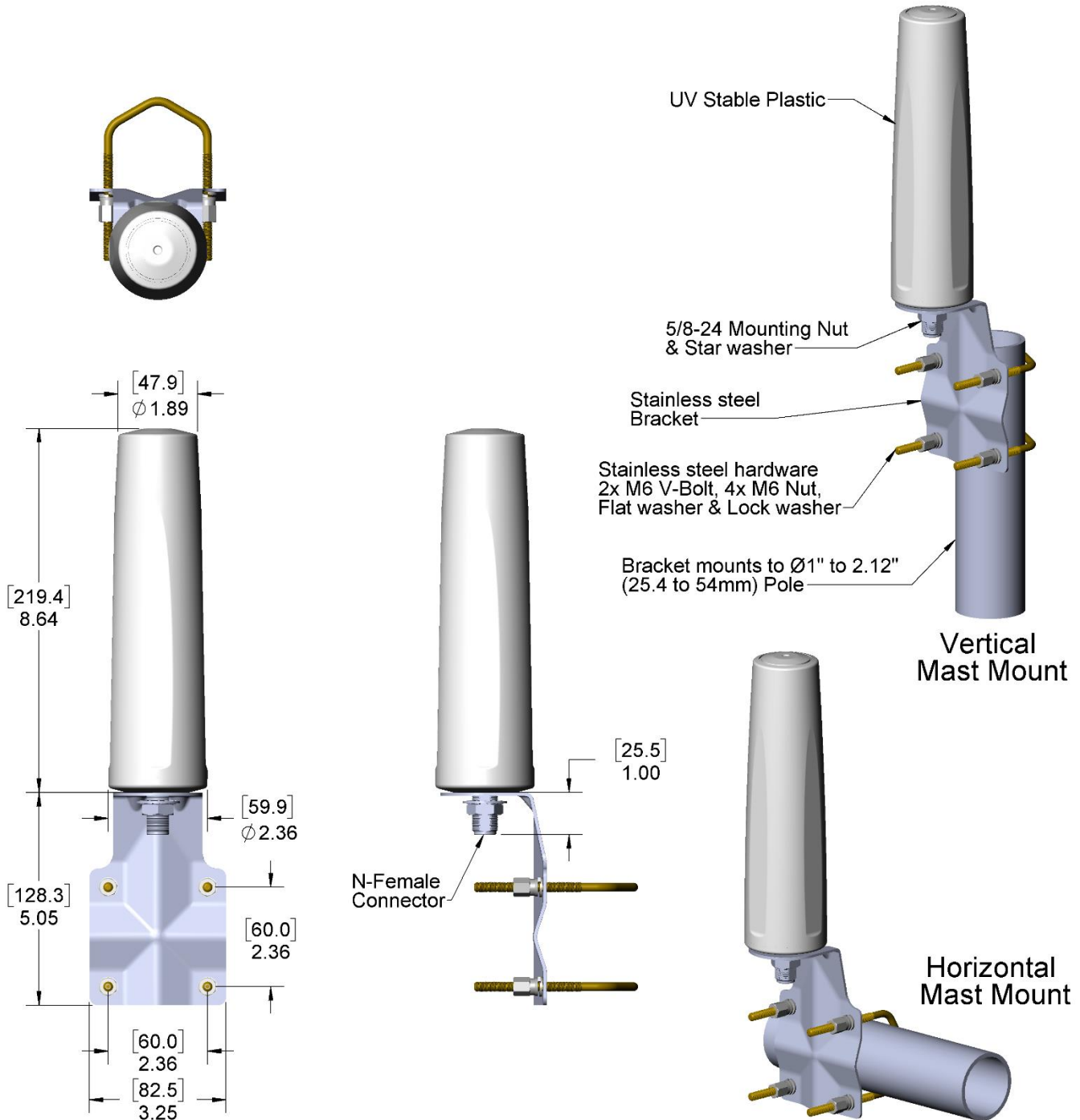
Size (Diameter x Height)	Color	Weight	Connector Type	Fixing System ²
62.2 (2.45") x 216.4 (8.64") mm	White	680.4grms (1.5lbs)	N-Female	Direct Mount
Housing Material	Operating Temperature	Storage Temperature	Ingress Protection	RoHS-6 Compliant
PET+PC, UV stable	-40°C to +85°C	-40°C to +85°C	IP67	Yes

Notes:

1. Measured with bracket
2. Ø15.9mm (0.625") mounting hole required

Mechanical Drawing

RO450NFKIT



Dimensions: Inches (mm)
 Unless otherwise specified, all tolerances are ±.010 (0.25mm)

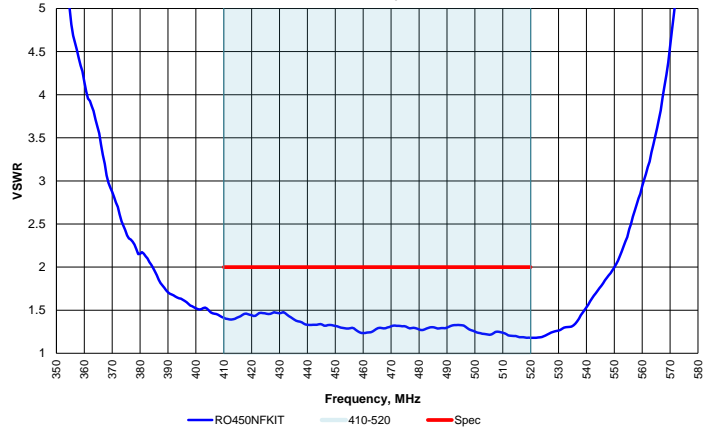
Charts

RO450NFKIT

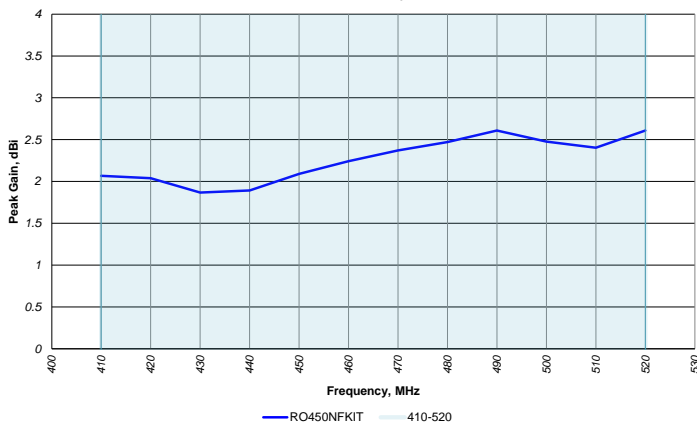
Test Setup:
RO450NFKIT antenna sample measured with bracket.



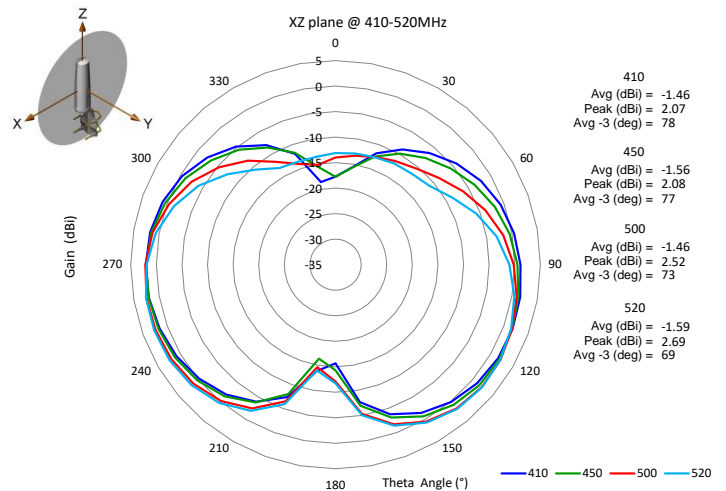
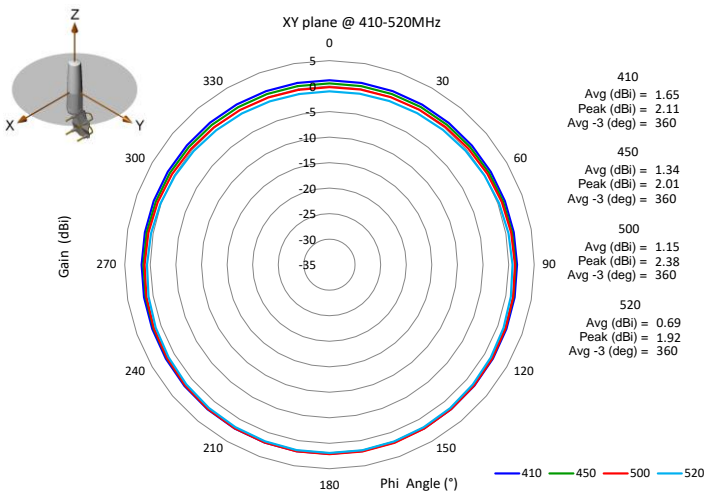
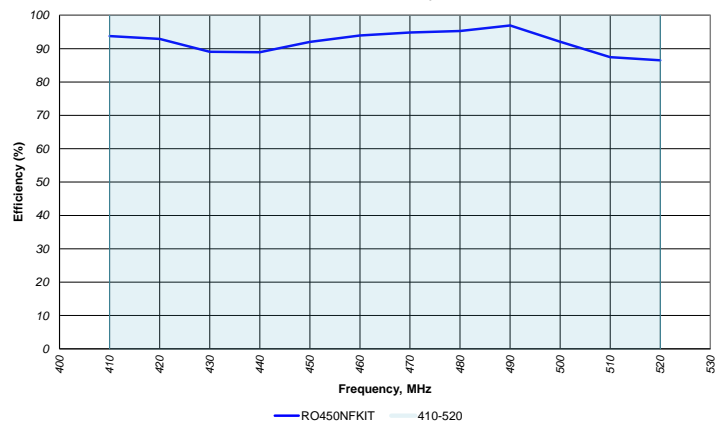
VSWR vs Frequency
RO450NFKIT Measured With bracket



Peak Gain vs Frequency
RO450NFKIT Measured With bracket



Efficiency vs Frequency
RO450NFKIT Measured With bracket



Packaging

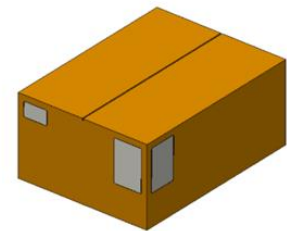
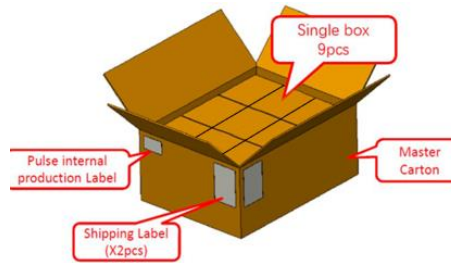
RO450NFKIT

Packaging info:

1 antenna packed in single box (285x155x90mm)

9 single boxes packed in out carton box (570x375x200mm)

1 label on each box with part number, description, date code.



Master carton size
570x375x200mm



1 Pallet can load 24 master carton
Total = 24x9 = 216pcs

P.S.:

- (1) Pallet size: 1.2m X 0.8m
- (2) Stack up height = 1.5m

Notes:

1. Please contact sales for availability, lead time, and/or any special requests. Samples available upon request.

For More Information:

Americas - antennas.us@pulseelectronics.com | Europe - antennas.eu@pulseelectronics.com | Asia - antennas.as@pulseelectronics.com | Questions? +1-800-ANTENNA
Performance warranty of products offered on this data sheet is limited to the parameters specified. Data is subject to change without notice. Other brand and product names mentioned herein may be trademarks or registered trademarks of their respective owners. © Copyright , 2020. Pulse Electronics, Inc. All rights reserved.

X-ON Electronics

Largest Supplier of Electrical and Electronic Components

Click to view similar products for [Antenna Accessories](#) category:

Click to view products by [Pulse](#) manufacturer:

Other Similar products are found below :

[HKIT-MTA9101-001](#) [YMST4](#) [NMOHPCN518](#) [MB830](#) [MB825](#) [MB820](#) [GRO](#) [W9909](#) [HKIT-MTA9100-001](#) [HKIT-LPx-001](#) [GPS-17519](#)
[MABT8M](#) [KH-IPEX3-0.81](#) [HJ-IPEX1-1.13-SMA-L=100mm](#) [3C0224M01-003](#) [KHA\(RG1.37\)-TX300B-IPEX](#) [KHA\(RG1.37\)-TX80B-IPEX](#)
[KHA\(RG1.37\)-TX140B-IPEX](#) [KH-IPEXA-SMAKWE-B060H](#) [KHA\(RG1.37\)-TX90B-IPEX](#) [KH-IPEX-SMA-RG137-120MM](#) [KH-SMAKW-](#)
[IPEX4-RG1.13-B300](#) [KH-SMAKW-IPEX4-RG0.81-B90](#) [KH-SMAKW-IPEX4-RG1.37-B80](#) [KH-SMAKW-IPEX4-RG1.37-B160](#) [KH-](#)
[SMAKW-IPEX-RG0.81-B70](#) [KH-SMAKW-IPEX-RG0.81-B140](#) [KHA-\(RG1.13\)-TX120-IPEX-221](#) [KHA\(RG1.37\)-TX70B-IPEX](#) [KH-](#)
[SMAKW-IPEX-RG1.78-250](#) [KH-SMAKW-IPEX4-RG0.81-B200](#) [KH-SMAKW-IPEX4-RG1.13-B70](#) [KH-SMAKW-IPEX4-RG1.37-B90](#) [KH-](#)
[SMAJ-221-RG1.78-160](#) [KH-SMAJ-IPEX-RG1.37-B70](#) [KH-SMAJ-IPEX-RG1.37-B60](#) [KH-FL2SMAK-IPEX3-RG0.81-B160](#) [KH-FL2SMAK-](#)
[IPEX4-RG0.81-B100](#) [KH-FL2SMAK-IPEX-RG1.13-B70](#) [KH-FL2SMAK-IPEX4-RG1.13-B90](#) [KH-FL2SMAK-IPEX-RG1.37-B60](#) [KH-](#)
[FL2SMAK-IPEX-RG1.37-B120](#) [KH-FL2SMAK-IPEX4-RG1.37-B80](#) [KH-FL2SMAK-IPEX4-RG1.37-B160](#) [KH-FL2SMAK-IPEX-RG178-](#)
[100](#) [KH-FL2SMAK-IPEX-RG178-200](#) [KH-SMAJ-221-RG1.13-B70](#) [KH-SMAJ-221-RG1.37-B90](#) [KH-FL2SMAK-IPEX-RG0.81-B50](#) [KH-](#)
[FL2SMAK-IPEX3-RG0.81-B300](#)