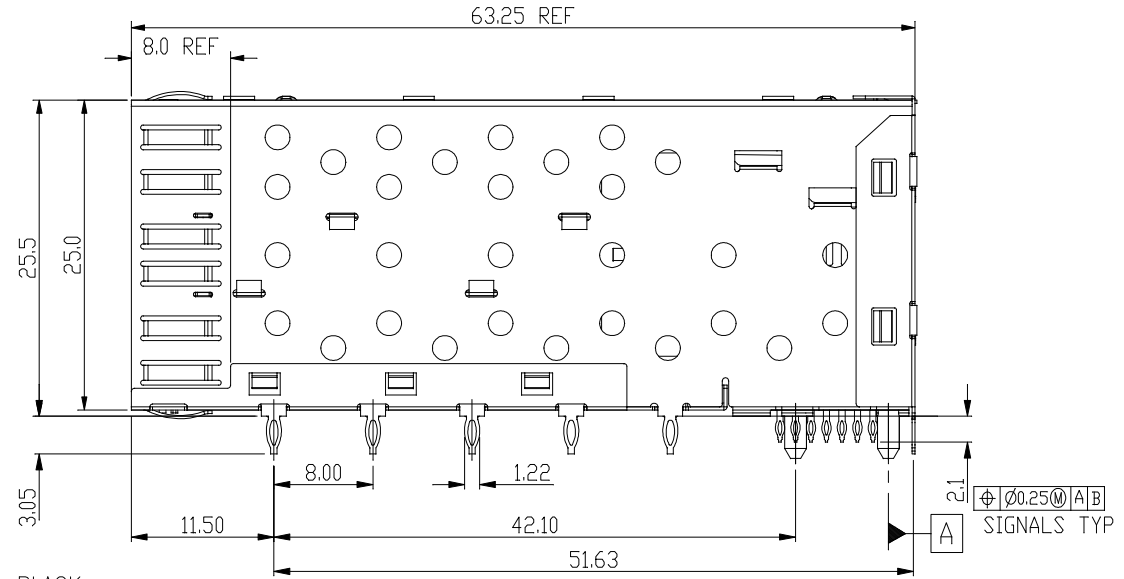
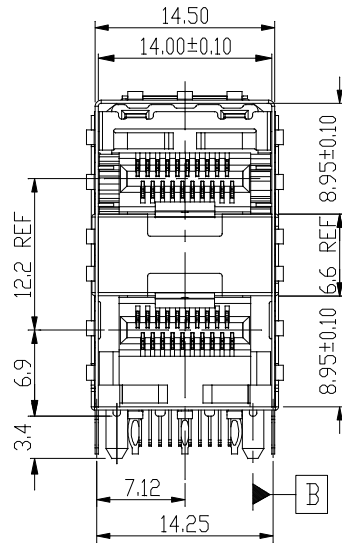


REVISION RECORD		
REV	DESCRIPTION	DRFT
9	UPDATE	Jack 7/19/11
10	Correct dim 1.7 to 1.9	Victor 10/31/12



NOTES:

- MATERIAL:
CONNECTOR
HOUSING: GLASS FILLED HIGH TEMPERATURE PLASTIC, UL94 V-0, BLACK
TERMINALS: PHOS-BRONZE t=0.2mm .
OVERMOLDED TERMINALS HOUSING: GLASS FILLED HIGH TEMPERATURE PLASTIC, UL94 V-0, BLACK.
CAGE ASSEMBLY: PHOS-BRONZE t=0.25mm.
- FINISH:
TERMINAL:
1)50u" MIN NICKEL PLATING OVER ALL.
2)COMPLIANT TAIL: 50u" TIN OVER 50u" MIN NICKEL.
3)30u" MIN GOLD PLATING ON MATING AREA.
CAGE: 50u" MIN NICKEL PLATING OVER ALL.
- PRESS FIT HOLES:
CONTACT:
1)HOLE DIAMETER AFTER PLATING: 0.55-0.65mm.
2)DRILLED HOLE: 0.675-0.725mm
CAGE:
1)HOLE DIAMETER AFTER PLATING: 1.00-1.10mm.
2)DRILLED HOLE: 1.125-1.175mm.
- RATING:
1)VOLTAGE: 120V r.m.s
2)CURRENT RATING: 0.5Amp. MAXIMUM PER INDIVIDUAL CONTACT.
3)OPERATING TEMPERATURE: -55° C TO 85° C
4)INSULATION RESISTANCE: 1000 mega-ohms Min.

Qty Per:	TRAY	CARTON
	16	96

DETACHED LISTS		RoHS Compliant												
	TOLERANCES EXCEPT AS NOTED	TITLE				W/O MIDDLE PINS								
	<table border="1"> <tr> <td>MM</td> <td>±</td> </tr> <tr> <td>.0 ± 0.25</td> <td>±</td> </tr> <tr> <td>.00 ± 0.20</td> <td>±</td> </tr> <tr> <td>.000 ± 0.10</td> <td>±</td> </tr> </table>	MM	±	.0 ± 0.25	±	.00 ± 0.20	±	.000 ± 0.10	±	SFP 2 BY 1 CAGE+CONNECTOR_S				
	MM	±												
.0 ± 0.25	±													
.00 ± 0.20	±													
.000 ± 0.10	±													
ANGLES ± 0.5	<table border="1"> <tr> <td>DFTD Yicqn</td> <td>DRAWING NO. CSFP013-L</td> <td>SIZE</td> <td>REV</td> </tr> <tr> <td>DATE 8/26/10'</td> <td>/PART NO. SFP013-L</td> <td>A3</td> <td>10</td> </tr> </table>	DFTD Yicqn	DRAWING NO. CSFP013-L	SIZE	REV	DATE 8/26/10'	/PART NO. SFP013-L	A3	10					
DFTD Yicqn	DRAWING NO. CSFP013-L	SIZE	REV											
DATE 8/26/10'	/PART NO. SFP013-L	A3	10											
	SCALE : 2:1	DO NOT SCALE DRAWING	SHEET 1	OF 3										

8

7

6

5

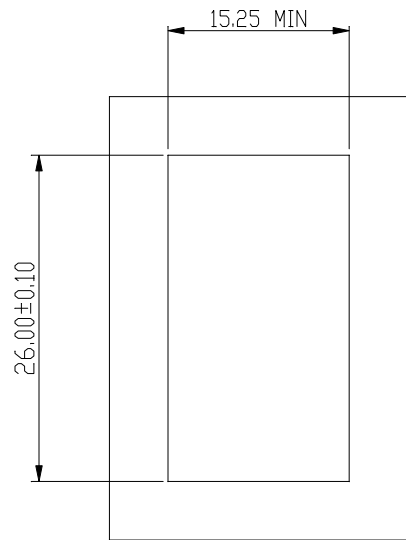
4

3

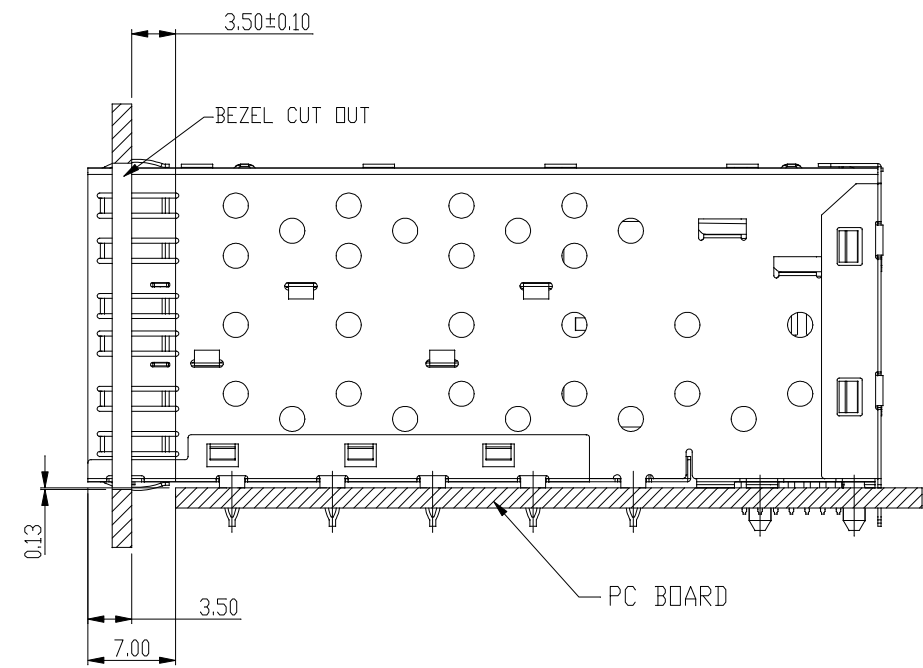
2

1

REVISION RECORD		
REV	DESCRIPTION	DRFT
9	UPDATE	Jack 7/19/11
10	Correct dim 1.7 to 1.9	Victor 10/31/12



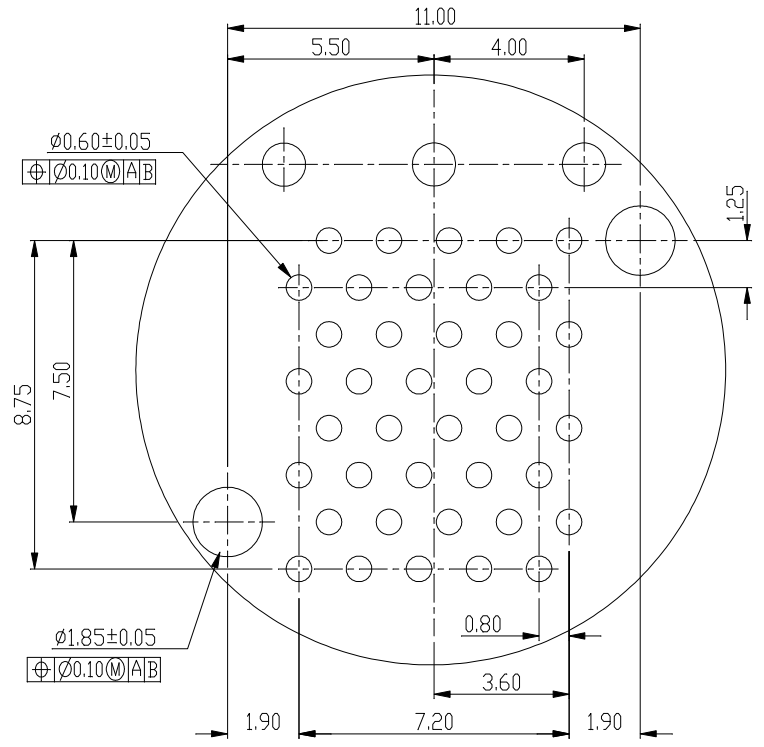
BEZEL CUT-OUT CENTER SPACING DETAIL
BEZEL THICKNESS:0.8-2.6



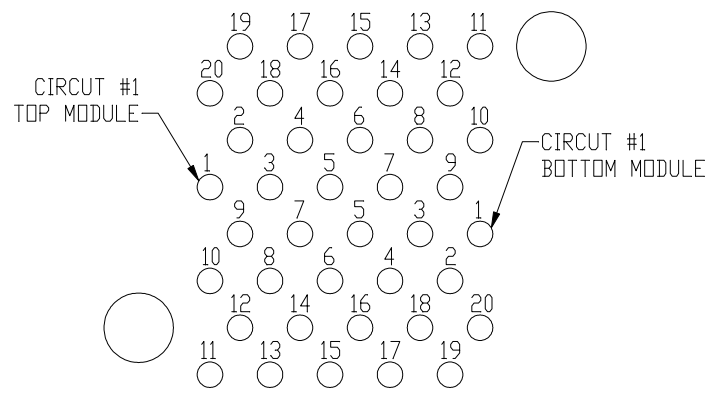
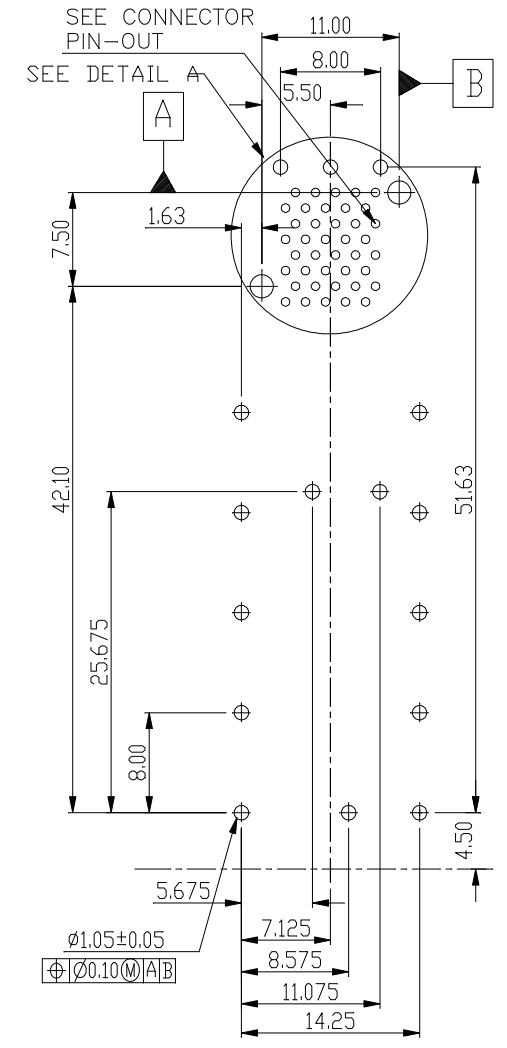
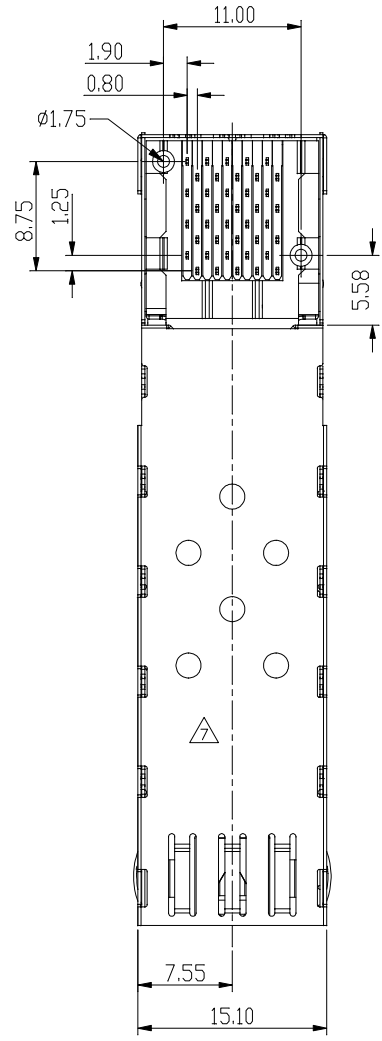
MM (INCH)	
TOLERANCES EXCEPT AS NOTED	
MM	±
.0 ± 0.25	±
.00 ± 0.20	±
.000 ± 0.10	±
ANGLES ± 0.5	
THIRD ANGLE PROJECTION	

RoHS Compliant			
TITLE		W/O MIDDLE PINS	
SFP 2 BY 1 CAGE+CONNECTOR_S			
DFTD Yican	DRAWING NO. CSFP013-L	SIZE	REV
DATE 8/26/10'	/PART NO. SFP013-L	A3	10
SCALE : 2:1	DO NOT SCALE DRAWING	SHEET 2	OF 3

REVISION RECORD		
REV	DESCRIPTION	DRFT
9	UPDATE	Jack 7/19/11
10	Correct dim 1.7 to 1.9	Vicior 10/31/12



DETAIL A
SCALE 6:1



CONNECTOR PIN-OUT
COMPONENT SIDE OF BOARD

DETACHED LISTS	MM (INCH)	
	TOLERANCES EXCEPT AS NOTED	
	MM	±
	.0 ± 0.25	±
	.00 ± 0.20	±
	.000 ± 0.10	±
ANGLES ± 0.5		
THIRD ANGLE PROJECTION		

RoHS Compliant		Pulse Electronics	
TITLE		W/D MIDDLE PINS	
SFP 2 BY 1 CAGE+CONNECTOR_S			
DFTD Yicon	DRAWING NO. CSFP013-L	SIZE	REV
DATE 8/26/10'	/PART NO. SFP013-L	A3	10
SCALE : 2:1	DO NOT SCALE DRAWING	SHEET 3	OF 3

X-ON Electronics

Largest Supplier of Electrical and Electronic Components

Click to view similar products for [I/O Connectors](#) category:

Click to view products by [Pulse](#) manufacturer:

Other Similar products are found below :

[571763P](#) [58098-0628](#) [D20419-211](#) [D38999/20FJ24PA L/C](#) [D38999/20FJ29SB L/C](#) [D38999/24FG11SN L/C](#) [72.250.1628.2](#) [72.250.2428.2](#)
[74720-0505](#) [76.350.0729.0](#) [76871-1403](#) [FCN-244F080-G/1](#) [FCN-260A9920](#) [FCN-268D024-G/2F#10X-R10](#) [PCS-E50FA](#) [PCS-XE26LKA](#)
[PCS-XE26MA+](#) [PCS-XES68MS+](#) [G38A71314B](#) [DX40-50P\(55\)](#) [1571250010](#) [157-22500-3](#) [MS3471L14-19P L/C](#) [1888020-8](#) [91-569786-](#)
[35H](#) [91-569786-35M](#) [91-644626-35P](#) [SM3100F14S-58S](#) [172501-4002](#) [172501-6002](#) [FCN-260C008-A/L0](#) [FCN-260C024-AL0](#) [FCN-](#)
[261Z008](#) [FCN-268D008-G/1K](#) [2000314-1](#) [200331-1](#) [2007498-2](#) [PCR-E28LMDAG1+](#) [PCR-E36FC+](#) [PCS-E28FS+](#) [PCS-XE26SLFD+](#) [PCS-](#)
[XE26SLFDT+](#) [G38A71214B](#) [HDRA-E68W1LFDTC-SL+](#) [HDR-E14MSG1+](#) [R88A-CNK81S](#) [CRT1-ATT02](#) [54182-0605](#) [U90B2054081210](#)
[UE86K842720321](#)