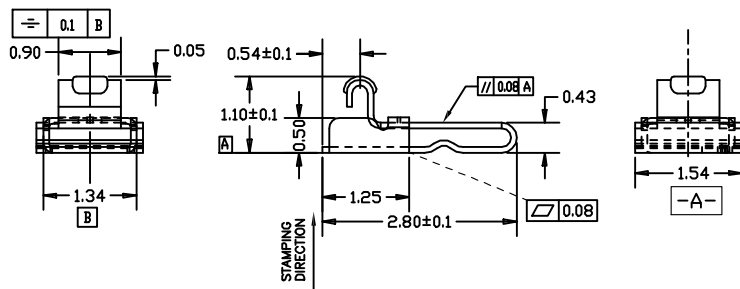
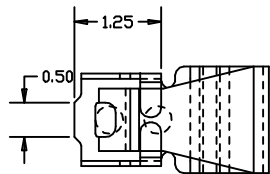


	A	B	C	D	E	F	G
MD	Description		Please follow Pulse Limits for the hazardous substances (RoHS, halogens) in the document "Pulse Hazardous Substances (HS) Limits (RPGE002-03)" and "Vendor Survey Questionnaire, Material Composition (LDM-SAF-L0040)".	Reliability Test Spec according to WIHS7.5.33 (Reliability Test Working Instruction) Default test standard is Test Standard A if no definition			
P2	Change the Logo						

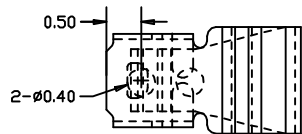
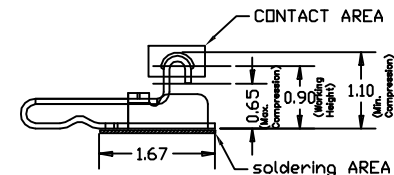
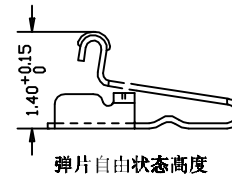


NOTES:UNLESS OTHERWISE SPECIFIED
1. DIM. MARKED ▼ TO BE CHECKED.

- 2. MATERIAL: SUS304-H
- 3. NO CRACK APPEARS ON CONTACT BALL SHAPE.
- 4. NO LINES APPEARS ON BENDING AREA.
- 5. ALL UNSPECIFIED RADII TO BE 0.05 MAXIMUM .
- 6. BURR:0.03MAX;CUMBER:1.5MM MAX/500MM; TWIST:20°/500MM.
- 7.WITH 25.4MM/MINUTE TEST SPEED COMPRESSED TO 0.3MM, KEEP THREE SECONDS, FORCE VALUE IS GREATER THAN 0.4N

8. PLATING: 1u"MIN GOLD PLATING ON CONTACT AREA, GOLD FLASH PLATING ON SOLDER AREA, 50u" MIN NICKEL PLATING OVER ALL

- 9.电镀品须符合盐雾测试24H要求
- 10.电镀后沾锡面积要达到95%以上,将产品焊接在PCB板上,以30°斜角用推拉力计将其推掉,大于3Kgf/pin;
- 11.电镀后过260摄氏度高温3分钟,产品无变色、起泡。



- .X± 0.15
- .XX± 0.10
- .XXX±0.05
- X:± 5°

PULSE (SUZHOU) WIRELESS PRODUCTS CO.LTD.

99 HUOLU RD. SUZHOU
NEW DISTRICT
215009
P.R.CHINA

PRODUCT(S)
SW0184N

ITEM
TX80106-001(CLIP)

THIRD ANGLE PROJECTION	SHEET NUMBER		1 / 1	
SCALE 4,000	GENERAL TOLERANCE			
	CUSTOMER NUMBER			
	DESIGN	JACKIE	JUN-28-18	
DOCUMENT NUMBER	CHECKED	MARK	Nov-22-17	
	APPROVED	JAMES	Nov-22-17	
SW0184N	PART VERSION	P01	DOCUMENT VERSION	P2
				P2
	MOD	DATE	NAME	

Confidential
This is a proprietary information of Pulse Suzhou.
No reproduction/copying is allowed without permission.

Functional Characteristics Key (Cpk requirement : Cpk) >
 ◆ Process Capability Studies required (total pcs)
 ◆ Ongoing Statistical Process Control Required (total pcs)
 ◆ Critical dimension need to be measured, no CPK requirement (total pcs)

X-ON Electronics

Largest Supplier of Electrical and Electronic Components

Click to view similar products for [Circuit Board Hardware - PCB category](#):

Click to view products by [Pulse manufacturer](#):

Other Similar products are found below :

[8919-0-00-15-00-00-03-0](#) [0135-0-15-01-30-27-04-0](#) [5970-1-15-01-32-14-04-0](#) [0149-0-15-15-30-27-04-0](#) [MBI 1 BLUE](#) [7305-0-15-15-47-14-10-0](#) [MLN 150/1 BLACK](#) [8579-0-15-80-11-27-10-0](#) [8579-1-15-15-11-27-10-0](#) [8830-0-15-01-22-14-10-0](#) [8836-0-00-21-00-00-03-0](#) [PRUEF 1 RED](#) [PRUEF 2 RED](#) [9976-0-00-00-00-00-03-0](#) [PW1616](#) [1215-3-05-00-00-00-01-0](#) [1231](#) [1303-0-15-15-47-14-04-0](#) [1404-3](#) [1404-4](#) [1406-4](#) [1407-3](#) [1406-3](#) [1407-4](#) [1408-3](#) [1424-4](#) [1427-3](#) [1419-4](#) [1426-4](#) [MPS 1 BLACK](#) [1548-103](#) [1938-0-00-00-00-00-03-0](#) [1942-0-00-00-00-00-03-0](#) [2101-3-00-44-00-00-07-0](#) [2108-2-00-50-00-00-07-0](#) [2110-2-00-44-00-00-07-0](#) [2111-2-00-00-00-00-07-0](#) [2113-4-00-44-00-00-07-0](#) [2301-3-00-44-00-00-07-0](#) [2308-1-00-50-00-00-07-0](#) [2313-2-00-00-00-00-07-0](#) [2315-2-01-44-00-00-07-0](#) [2317-2-00-50-00-00-07-0](#) [2333-1-00-50-00-00-07-0](#) [9000-0-00-00-00-00-03-0](#) [2506-2-00-50-00-00-07-0](#) [2507-2-01-44-00-00-07-0](#) [2508-2-00-44-00-00-07-0](#) [2561-2-00-44-00-00-07-0](#) [9220](#)