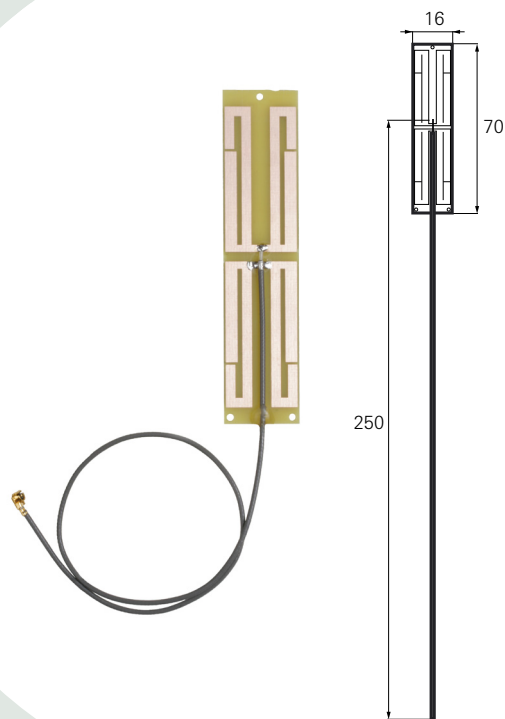


# Access Point Router 802.11n Antenna

PWB Antenna with feed cable. Pulse Part Number: W3513



## Features

- Low profile
- Omni directional gain in XY-plane
- Size W x L x H (16 x 70 x 0.9 mm)
- Antenna feed cable length: 250mm (total) / 212mm (from radiator edge)
- Antenna feed cable: 1.13mm OD with U.FL compatible connector
- Lead free materials
- RoHS Compliant Product

## Applications

- Access point routers 802.11n
- WLAN/WiFi 802.11a/b/g/n

## Electrical specifications @ +25 °C

*Note: Electrical characteristics are measured on free space.*

### 2.4 – 2.5 GHz

Typical free space performance

Frequency Range [GHz]	2.4 – 2.5
Linear Average Gain [dBi]	-3,5
3D Peak Gain [dBi]	2,0
Total 3D Efficiency [%] / [dB]	72 / -1,4 (peak) 69 / -1,6 (band edges)
Return loss min. [dB]	-10
Impedance [Ω]	50
Operating Temperature [°C]	-40 to +85

### 4.9 – 5.85 GHz

Typical free space performance

Frequency Range [GHz]	4.9 – 5.85
Linear Average Gain [dBi]	-4,5
3D Peak Gain [dBi]	2,0
Total 3D Efficiency [%] / [dB]	65 / -1,9 (peak) 50 / -3.0 (band edges)
Return loss min. [dB]	-10
Impedance [Ω]	50
Operating Temperature [°C]	-40 to +85

## Pulse Finland Oy

Takatie 6  
90440 Kempele, Finland  
Tel: +358 207 935 500  
Fax: +358 207 935 501  
[www.pulseeng.com/antennas](http://www.pulseeng.com/antennas)

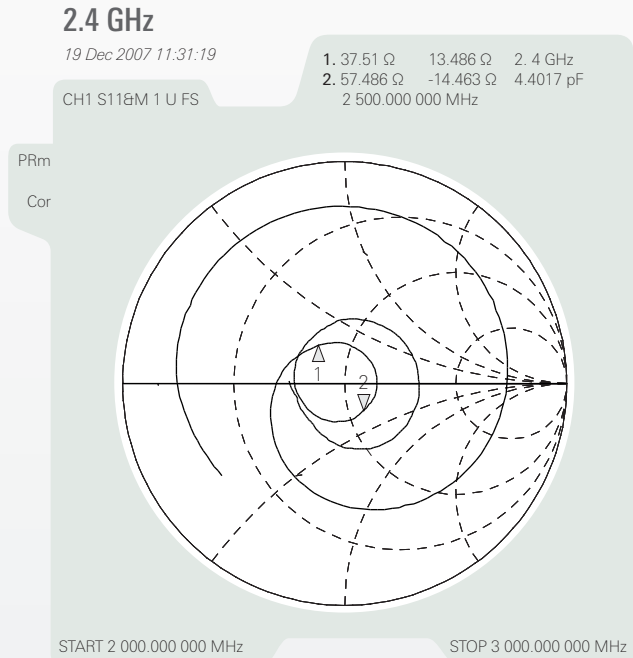
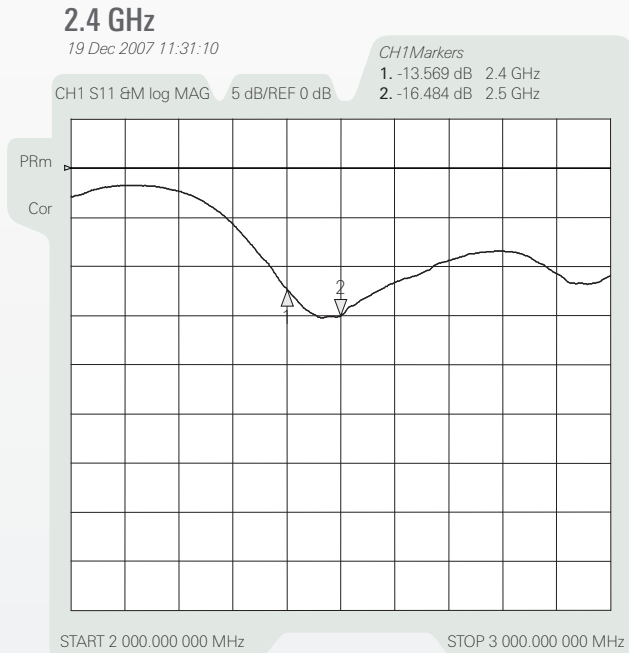


# Access Point Router 802.11n Antenna

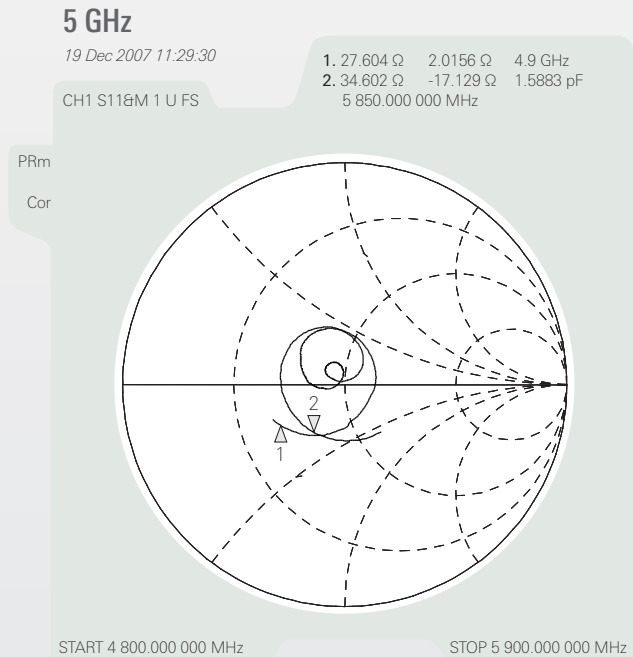
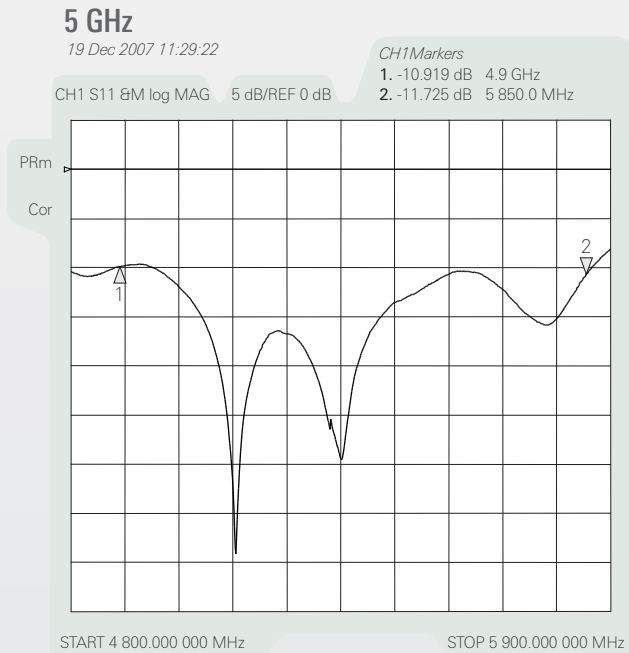
PWB Antenna with feed cable. Pulse Part Number: W3513

## Typical Electrical Characteristics (T=25 °C)

2,4 GHz typical Return Loss S11/ impedance



5 GHz typical Return Loss S11/ impedance



Pulse Finland Oy

Takatie 6  
90440 Kempele, Finland  
Tel: +358 207 935 500  
Fax: +358 207 935 501

[www.pulseeng.com/antennas](http://www.pulseeng.com/antennas)

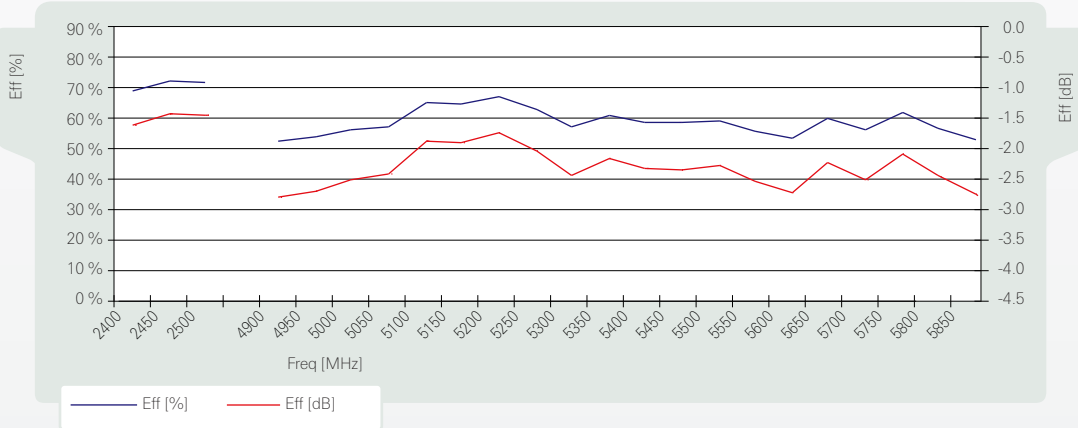


# Access Point Router 802.11n Antenna

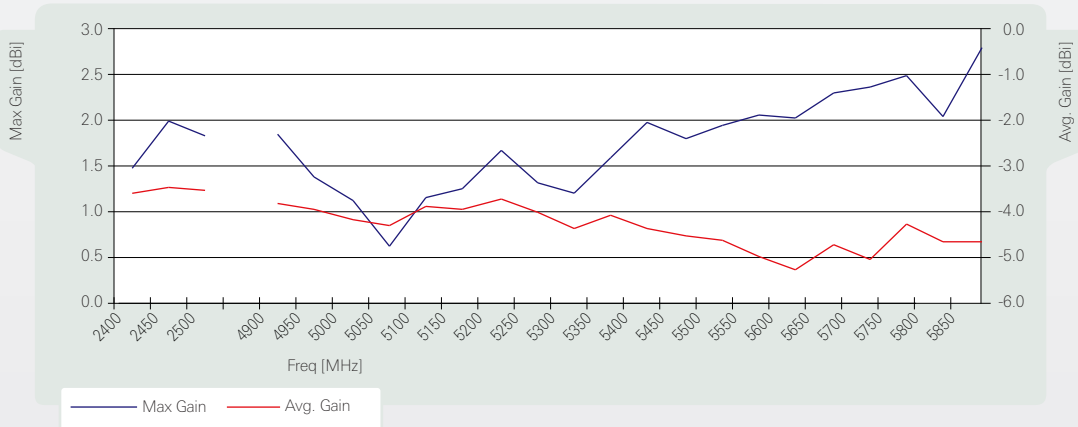
PWB Antenna with feed cable. Pulse Part Number: W3513

## Free Space Efficiency, Average and Maximum Gain

Total 3D Efficiency



Average and Max Gain



**Pulse Finland Oy**

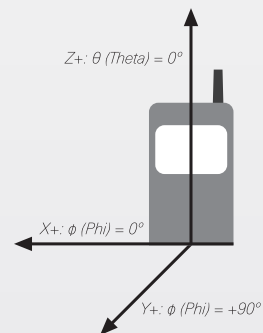
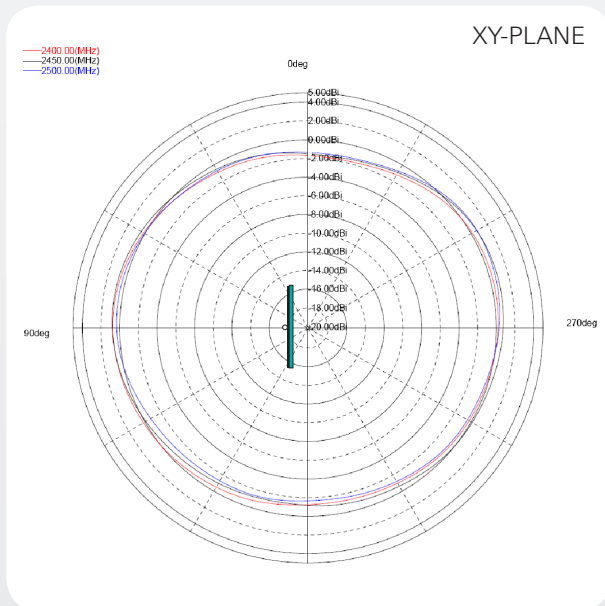
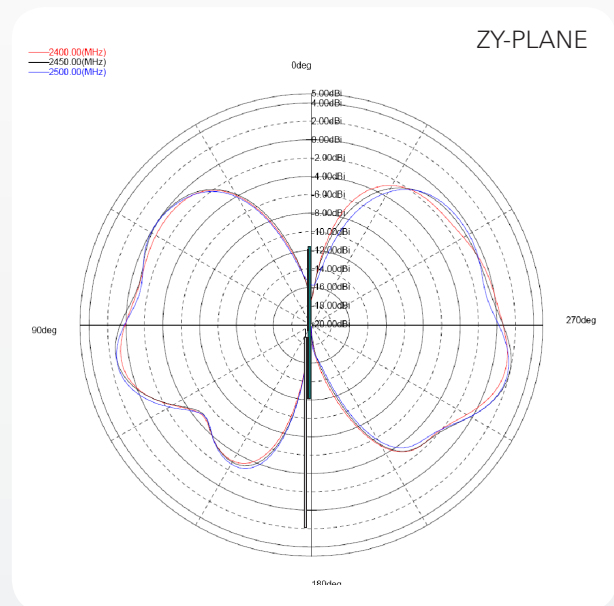
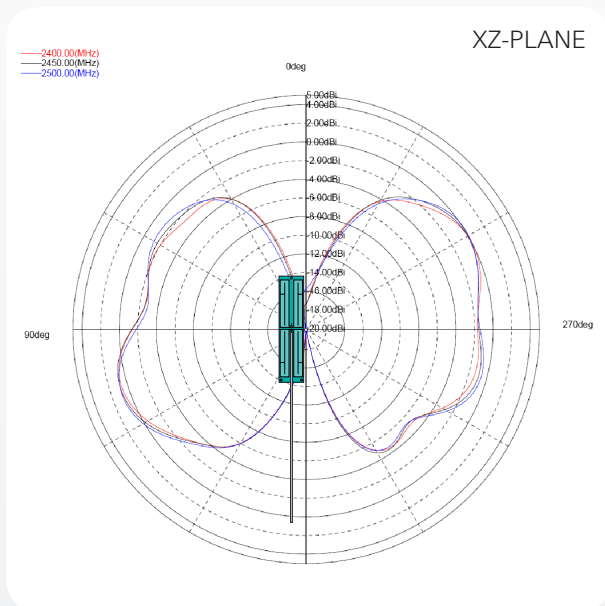
Takatie 6  
 90440 Kempele, Finland  
 Tel: +358 207 935 500  
 Fax: +358 207 935 501  
[www.pulseeng.com/antennas](http://www.pulseeng.com/antennas)



# Access Point Router 802.11n Antenna

PWB Antenna with feed cable. Pulse Part Number: W3513

824 – 894 MHz Typical Free Space Radiation Patterns



Pulse Finland Oy

Takatie 6  
90440 Kempele, Finland  
Tel: +358 207 935 500  
Fax: +358 207 935 501

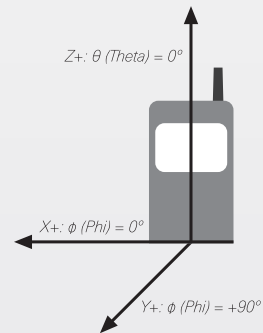
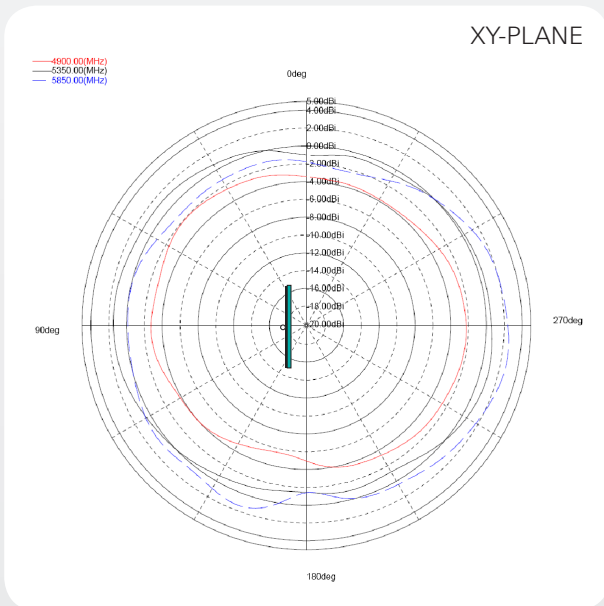
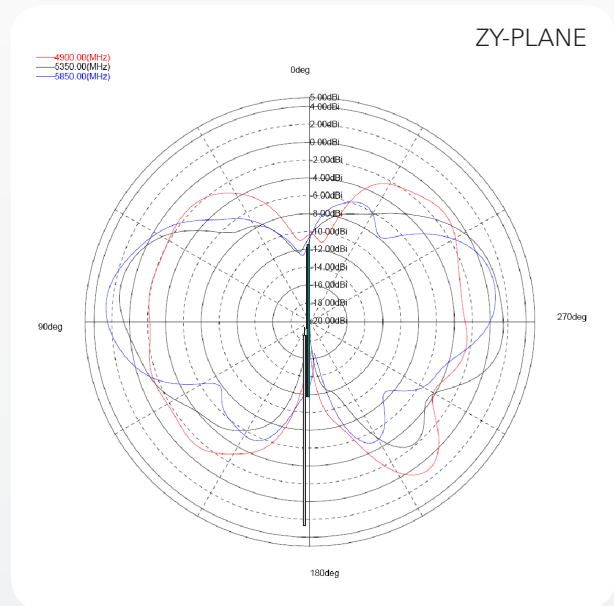
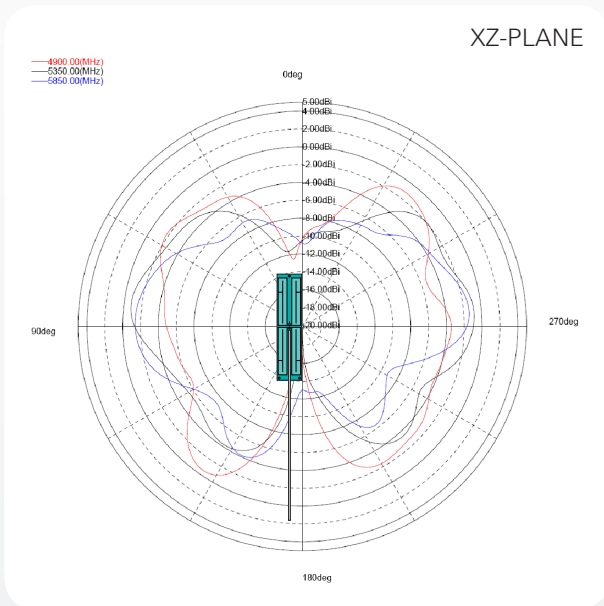
[www.pulseeng.com/antennas](http://www.pulseeng.com/antennas)



# Access Point Router 802.11n Antenna

PWB Antenna with feed cable. Pulse Part Number: W3513

880 – 960 MHz Typical Free Space Radiation Patterns



Pulse Finland Oy

Takatie 6  
90440 Kempele, Finland  
Tel: +358 207 935 500  
Fax: +358 207 935 501

[www.pulseeng.com/antennas](http://www.pulseeng.com/antennas)



## X-ON Electronics

Largest Supplier of Electrical and Electronic Components

*Click to view similar products for [Antennas](#) category:*

*Click to view products by [Pulse](#) manufacturer:*

Other Similar products are found below :

[CCT FM1](#) [ABFT](#) [AD-NM-SMAF](#) [CTC110](#) [MAF94149](#) [EXE902SF](#) [MMCX-SMA-100](#) [PDQ24496-91NF](#) [GAN30084EU](#) [930-033-R](#) [A08-HABUF-P5I](#) [AAF95035](#) [DG-ANT-20DP-BG-B](#) [ANT-DB1-RMT-SMA](#) [APAMPGJ-141](#) [1513563-1](#) [A09-HASM-7](#) [EXE902MD](#) [EXE902SM](#) [APAMPG-117](#) [GPS1575SP26-004](#) [GPS15MGSM](#) [CMQ69273-30NF](#) [RD2458-5-OTDR-NM](#) [TRAB24/49003](#) [TRAB8903NP](#) [TRAB9023NP](#) [W3908B0100](#) [W6102B0100](#) [YE572113-30RSMM](#) [SPDA17RP918](#) [OP24516SX-91NM](#) [OP24516SX-91RSMM](#) [CMS69273-30NF](#) [CMS69273P-30NF](#) [TRAB24003N](#) [TRAB24003NP](#) [TRAB8213NP](#) [TRAB8903](#) [A09-Y8NF](#) [A09-Y11NF](#) [A09-HSM-7](#) [A09-F8NF-M](#) [A09-F5NF-M](#) [TRA9023P](#) [108-00016-050](#) [W3593B0100](#) [GPSU15P](#) [W3921B0100](#)