

# LTE, 4G, BROADBAND

**NOTE: All NMO mount antennas listed in this catalog section require the NMOHF-style (high frequency 27 MHz - 6 GHz) mount.**

## LTE, 4G BROADBAND WHIPS

Model	Type	Frequency (MHz)	Gain (dBd/dBi)	Max Height (In)	VSWR	Cable Assembly
EF2405NMO	Elevated Feed	2400-2500	2.9/5	16	<1.5:1	Order Separately
EF4905NMO	Elevated Feed	4900-5000	2.9/5	12	<1.5:1	Order Separately
NMO4E4900B	Elevated Feed	4900-5350	1.9/4	4.5	2:1	Order Separately
NMO4E5350B	Elevated Feed	5350-5925	4.9/4	4.5	2:1	Order Separately
NMO5E2400B	Collinear	2400-2500	2.95	8.5	1.5:1	Order Separately
R380500109	Dipole	2400-2500	0/2	3.5	1.5:1	Order Separately
R380500125	Dipole	2400-2500	0/2	2.5	1.5:1	Order Separately
SPDA17RP2400/5900	PCB	2400-2500 4900-5900	0/2 2.9/5	6 (Bent) 7 (Straight)	2:1	Order Separately
SPDA17806/2170LAR	PCB	806-960 1710-2170	0/5 0/5	6 (Bent) 7.5 (Straight)	2.5:1	Order Separately
SPDA24700/2700	PCB	698-960 1710-2170 2500-2700	0/0 0/0 0/0	9 (Straight)	2.5:1	Order Separately



EF



NMO5E



NMO4E



R380.500.125



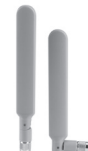
R380.500.109



SPDA17RP2400/5900



SPDA24700/2700



SPDA17806/2170LAR

## GPS LTE DIRECT MOUNTS

Model	Frequency (MHz)	Gain (dBd/dBi)	Polarization	VSWR	Mounting	Voltage	Size H x Dia (In)	Cable	Conn
GPSDM700/2500FFS	698-960/1710-2170/2300-2700	.9/3	Linear Vertical	2.0:1	3/4" Hole	3 or 5	3.5 x 4.16	17' RG-58	FME
	2400-2485/5150-5850	3.9/6	Linear Vertical					17' RG-58	FME
	1575.42	5 dBic	RHCP					17' RG-174	SMA



GPSDM700/2500

The most commonly used cable assembly/mount is the NMOKHFUD (27 MHz to 6 GHz) with 17' of UD (RG-58/U Dual Shield).

# LTE, 4G, BROADBAND

**NOTE: All NMO mount antennas listed in this catalog section require the NMOHF-style (high frequency 27 MHz - 6 GHz) mount.**

## 700/800/900/1850 MHz LOW PROFILE

Model	Frequency (MHz)	Gain (dBd/dBi)	Mount	Size H x DIA (In)	Power Rating (Watts)	Color	Cable Assembly
LPT825/19NMOHF	Cellular: 806-960 PCS: 1710-2170 ISM: 2400	.8/3 .8/3 1.9/4	NMOHF	3 x 1.75	10	Black	Order Separately
LPT2400NMOHF	2400-2500	2.9/5	NMOHF	3 x 1.75	10	Black	Order Separately
SLPT698/2170NMOHF	LTE: 698-960 PCS: 1710-2170 ISM: 2400-2700	2.35/4.5 3.45/5.6 1.85/4	NMOHF	3 x 1.75	10	Black	Order Separately
SLPT2400NMOHF	2400-2500	2.15/4.3	NMOHF	2.6 x 1.5	10	Black	Order Separately
SLPT4900NMOHF	4900-5900	3.35/5.5	NMOHF	2.6 x 1.5	10	Black	Order Separately
SLPT2400/5900NMOHF	2400-2500 4900-5900	2.15/4.3 3.35/5.5	NMOHF	2.6 x 1.5	10	Black	Order Separately
LPT698/2170DM	LTE: 698-960 PCS: 1710-2170 ISM: 2400-2700	2.35/4.5 3.45/5.6 1.85/4	Direct (N Female)	3 x 1.75	10	Black	Order Separately
SLPT2400DMN	2400-2500	2.15/4.3	Direct (N Female)	2.6 x 1.5	10	Black	Order Separately
SLPT4900DMN	4900-5900	3.35/5.5	Direct (N Female)	2.6 x 1.5	10	Black	Order Separately
SLPT2400/5900DMN	2400-2500 4900-5900	2.15/4.3 3.35/5.5	Direct (N Female)	2.6 x 1.5	10	Black	Order Separately



## LTE, 4G, BROADBAND STEALTH BLADES

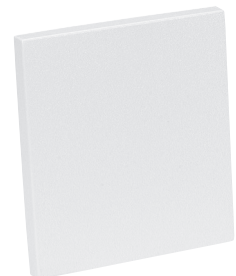
Stealth Blade antennas have a gain of 2.14 dBi, a maximum power of 3 Watts and linear polarization

Model	Frequency (MHz)	Type	Dimensions L x W (In)	Color	Coax	Connector
SB24003	2400-2500	Dipole	3 x .75	Black	3' RG-174	No Conn
SB24006	2400-2500	Dipole	3 x .75	Black	6' RG-174	No Conn
SB2400SMA3	2400-2500	Dipole	3 x .75	Black	3' RG-174	SMA
SB2400SMA6	2400-2500	Dipole	3 x .75	Black	6' RG-174	SMA
SB2400SMB3	2400-2500	Dipole	3 x .75	Black	3' RG-174	SMB
SB2400SMB6	2400-2500	Dipole	3 x .75	Black	6' RG-174	SMB
SB2400MMCX3	2400-2500	Dipole	3 x .75	Black	3' RG-174	MMCX
SB2400MMCX6	2400-2500	Dipole	3 x .75	Black	6' RG-174	MMCX



## LTE, 4G, BROADBAND PANELS

Model	Frequency (MHz)	Gain (dBd/dBi)	VSWR	Size L x W x D (In)	Polarization	Connector
PA2101850N	1850-1990	7.9/10	2:1	9.5 x 4 x .8	Vertical	N Female
PA4142400N	2400-2485	12.5/14.2	1.5:1	9.5 x .8 x 8.6	Vertical	N Female



NOTE: Antennas are not to scale

1 800 ANTENNA (268-3662)

# LTE, 4G, BROADBAND

## LTE, 4G, BROADBAND RADOME OMNIS

**NOTE: Radome Omni antennas have the following specifications:**

**Radome Enclosure:** Pultruded Fiberglass (UV Protected)

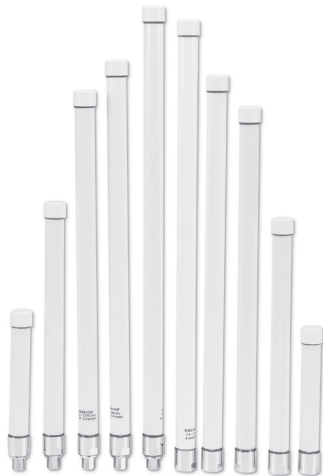
**VSWR:** 2.0:1

**Power Rating:** 20 Watts

**Ingress Protection:** IP67

**Polarization:** Vertical

**Suggested mounting brackets for N Female connectors are FB2BRACKET or FB3BRACKET. See Page 45 for FB brackets.**



Single Band Radome Omnis



RO806/2170NM

Model	Frequency (MHz)	Gain (dBd/dBi)	Length (In)	Connector
RO2404NM	2400-2500	1.9/4	11.5	N Male
RO2406NF	2400-2500	3.9/6	11.5	N Female
RO2406NM	2400-2500	3.9/6	11.5	N Male
RO2408NF	2400-2500	5.9/8	20	N Female
RO2408NM	2400-2500	5.9/8	20	N Male
RO2408NFD (downtilt)	2400-2500	5.9/8	20	N Female
RO2408NMD (downtilt)	2400-2500	5.9/8	20	N Male
RO2408NFU (uptilt)	2400-2500	5.9/8	20	N Female
RO2408NMU (uptilt)	2400-2500	5.9/8	20	N Male
RO4910NF	4940-4990	7.8/10	18	N Female
RO4910NM	4940-4990	7.8/10	18	N Male
RO5206NF	5150-5350	3.9/6	6.75	N Female
RO5410NF	5470-5725	7.8/10	16.5	N Female
RO5210NF	5150-5350	7.8/10	16.5	N Female
RO5210NM	5150-5350	7.8/10	16.5	N Male
RO5410NM	5470-5725	7.8/10	16.5	N Male
RO5805NF	5150-5825	2.8/5	6.75	N Female
RO5805NM	5150-5825	2.8/5	6.75	N Male
RO5806NF	5725-5875	3.9/6	6.75	N Female
RO5810NF	5725-5875	7.8/10	16.5	N Female
RO5810NM	5725-5875	7.8/10	16.5	N Male
RO806/2170NM	806-960 1710-2170	1.9/4 1.9/4	16.5	N Male

## X-ON Electronics

Largest Supplier of Electrical and Electronic Components

*Click to view similar products for [Antennas](#) category:*

*Click to view products by [PulseLarsen](#) manufacturer:*

Other Similar products are found below :

[GAN30084EU](#) [930-033-R](#) [GW17.07.0250E](#) [1513563-1](#) [EXE902SM](#) [APAMPG-117](#) [MAF94383](#) [W3908B0100](#) [W6102B0100](#) [YE572113-30RSMM](#) [108-00014-50](#) [66089-2406](#) [SPDA17RP918](#) [A09-F8NF-M](#) [A09-F5NF-M](#) [RGFRA1903041A1T](#) [W3593B0100](#) [W3921B0100](#) [SIMNA-868](#) [SIMNA-915](#) [SIMNA-433](#) [W1044](#) [W1049B090](#) [A75-001](#) [WTL2449CQ1-FRSMM](#) [CPL9C](#) [EXB148BN](#) [0600-00060](#) [TRA9020S3PBN-001](#) [GD5W-28P-NF](#) [MA9-7N](#) [GD53-25](#) [GD5W-21P-NF](#) [C37](#) [MAF94051](#) [MA9-5N](#) [EXD420PL](#) [B1322NR](#) [QWFTB120](#) [MAF94271](#) [MAF94300](#) [GPSMB301](#) [FG4403](#) [AO-AGSM-OM54](#) [5200232](#) [MIKROE-2349](#) [WCM.01.0111](#) [MIKROE-2393](#) [MIKROE-2352](#) [MIKROE-2350](#)