

1.575GHz GPS Ceramic Chip Antenna

(Ground cleared under antenna, clearance area **7.80 mm x 5.25 mm**)

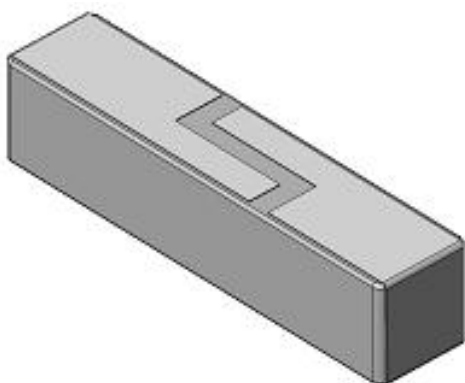
Pulse Part Number: W3062A

Features

- Omni directional radiation
- Low profile
- Compact size W x L x H (7 x 1.6 x 1.6 mm)
- Low weight (86 mg)
- Lead free materials
- Fully SMD compatible
- Lead free soldering compatible
- Tape and reel packing
- RoHS Compliant Product

Applications

- GPS L1 band
- 1.575 GHz



Electrical specifications @ +25 °C

Note: Electrical characteristics depend on test board (GP) size and antenna positioning on GP and Ground Clearance area size.

GPS

*Typical performance (testboard size 80 x 37 mm, PWB ground clearance area **7.80 mm x 5.25 mm**)*

Frequency Range [MHz]	RHCP Gain [dBic]	Linear Max Gain [dBi]	Efficiency [%] / [dB]	Return loss min. [dB]	Impedance [Ω]	Operating Temperature [°C]
1575.42 +/- 10	0 (peak) -0,5 (band edges)	2,5 (peak) 2 (band edges)	80 / -1 (peak) 75 / -1,25 (band edges)	-10	50	-40 to +85

Pulse Finland Oy

Takatie 6
90440 Kempele, Finland
Tel: +358 207 935 500
Fax: +358 207 935 501

Domicile: Kempele
Business ID: 1933992-8
firstname.lastname@pulseeng.com
www.pulseeng.com/antennas

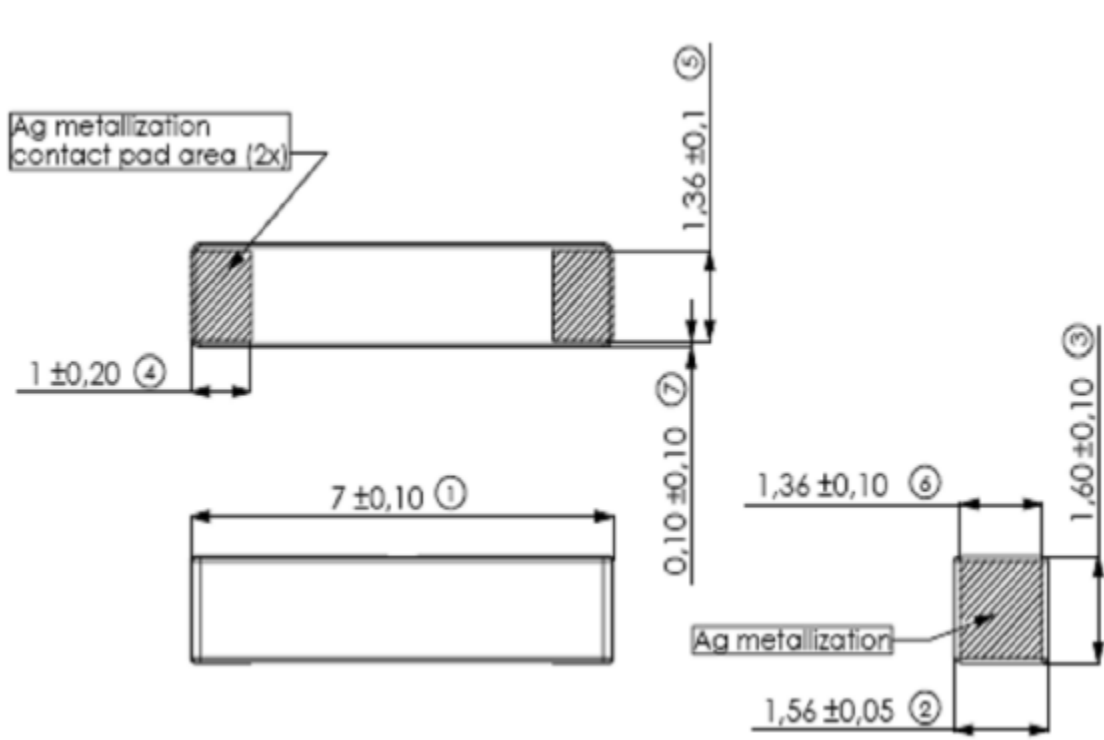


© 2006. All Rights Reserved.

GPS Ceramic Chip Antenna

(Ground cleared under antenna, clearance area 7.80 mm x 5.25 mm)

terminal configuration and dimensions



Antenna features		
No.	Terminal Name	Terminal Dimensions
1	Feed / GND	1.00 x 1.36 mm
2	Feed / GND	1.00 x 1.36 mm

Antenna is symmetrical.
Either of terminals 1 or 2 can be Feed / GND

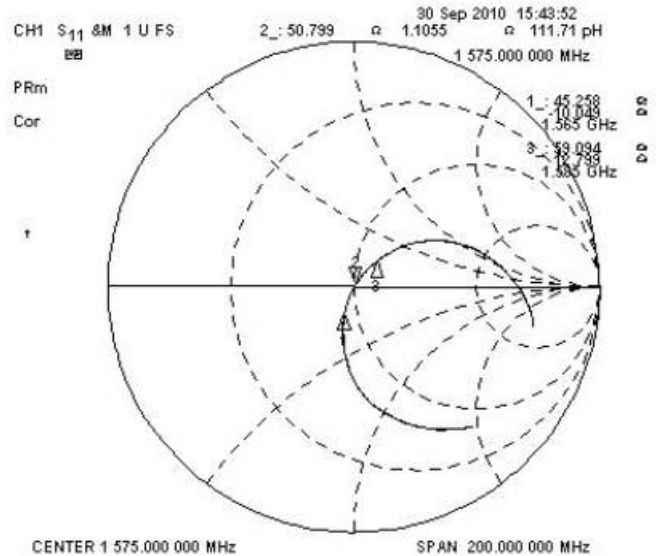
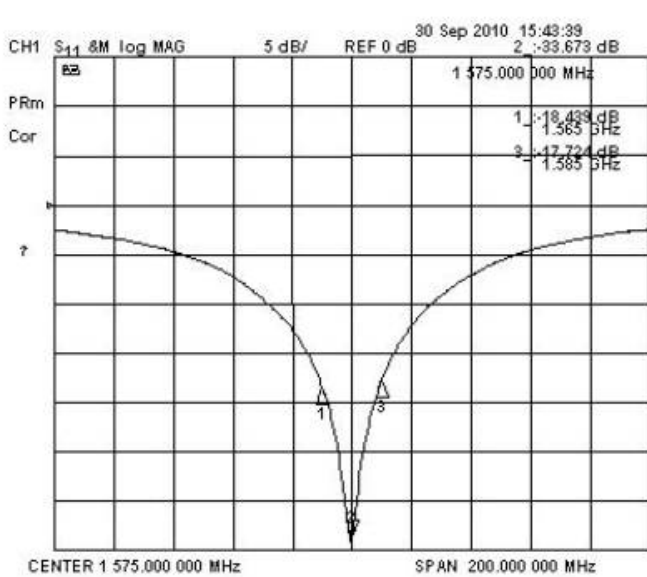
GPS Ceramic Chip Antenna

(Ground cleared under antenna, clearance area 7.80 mm x 5.25 mm)

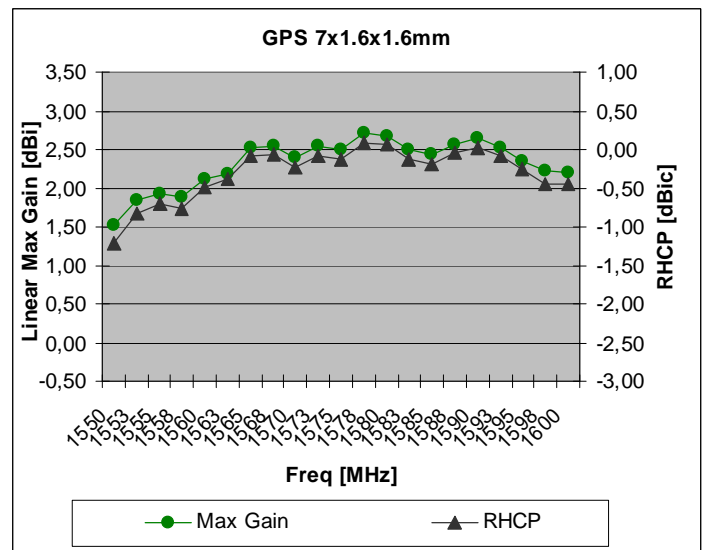
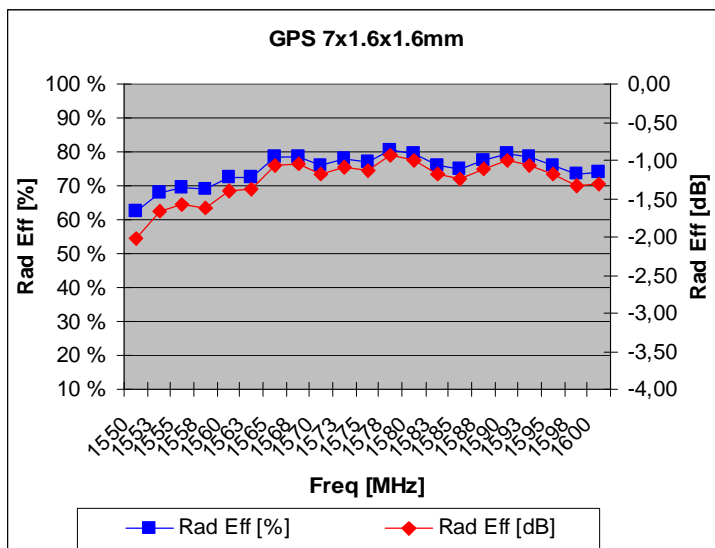
Typical Electrical Characteristics (T=25 °C)

Measured on the 80 x 37mm test board. Matched with 2.2pF shunt capacitor

Typical Return Loss S11/ impedance



Free space efficiency, maximum gain and RHCP



Pulse Finland Oy

Takatie 6
 90440 Kempele, Finland
 Tel: +358 207 935 500
 Fax: +358 207 935 501

Domicile: Kempele
 Business ID: 1933992-8
firstname.lastname@pulseeng.com
www.pulseeng.com/antennas

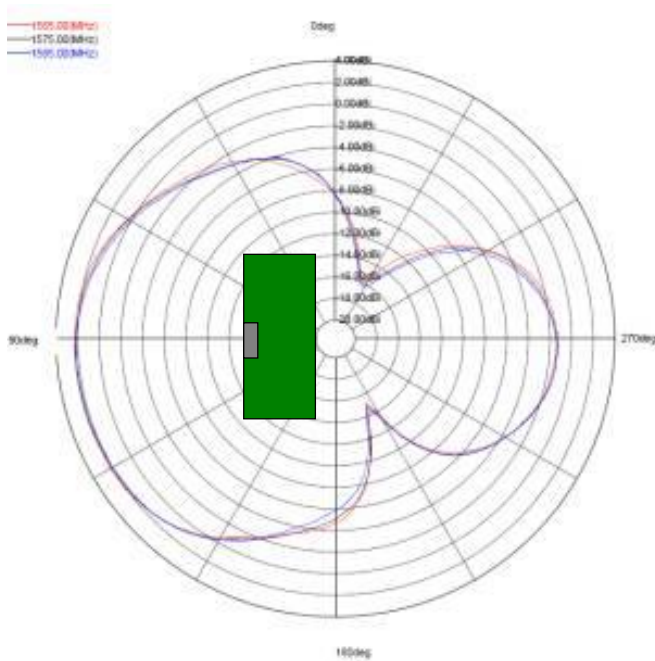


GPS Ceramic Chip Antenna

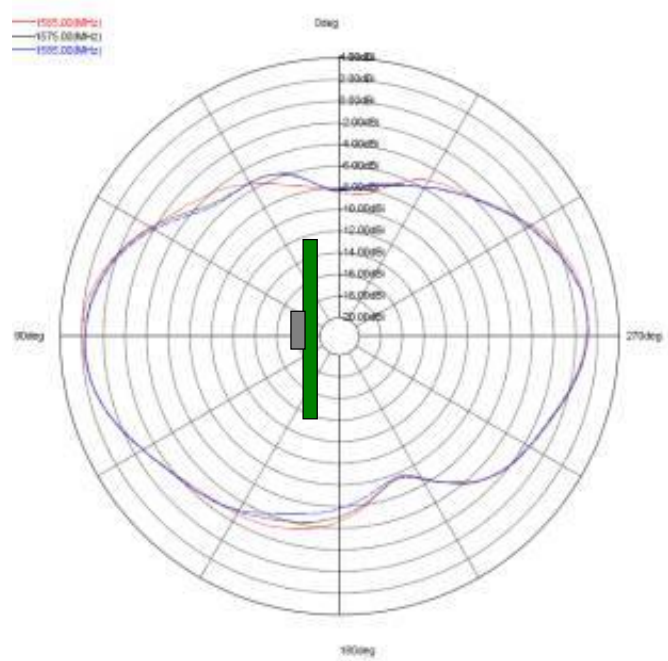
(Ground cleared under antenna, clearance area 7.80 mm x 5.25 mm)

Typical Free space Radiation Patterns

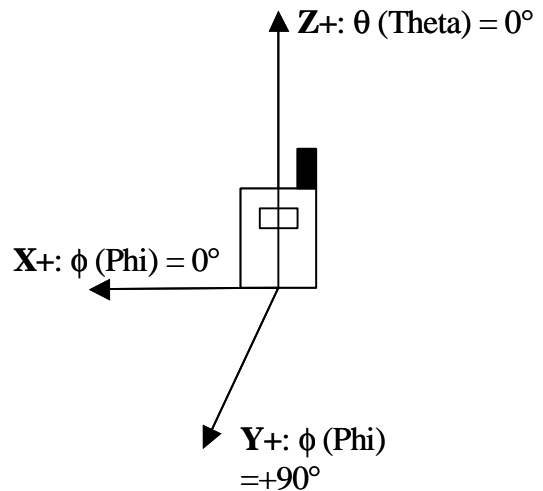
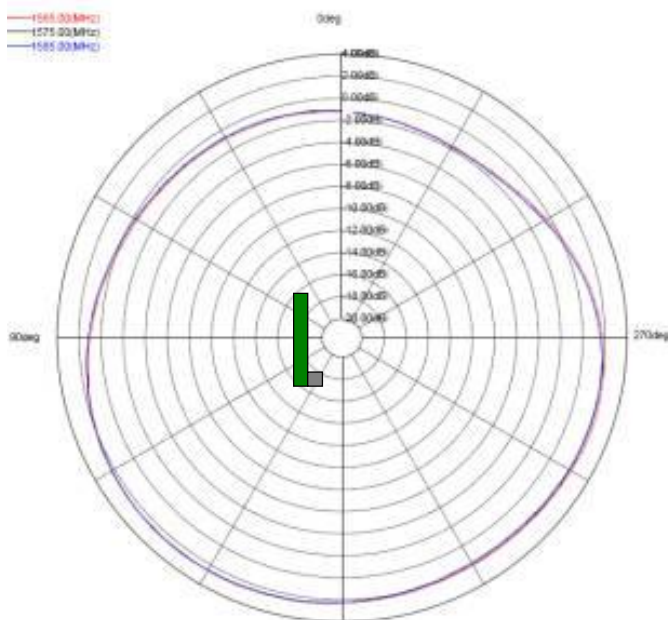
XZ-PLANE



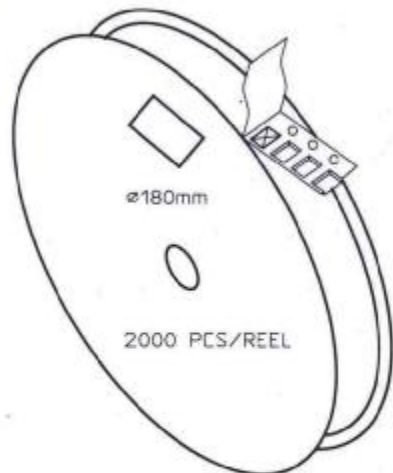
ZY-PLANE



XY-PLANE



Packing form

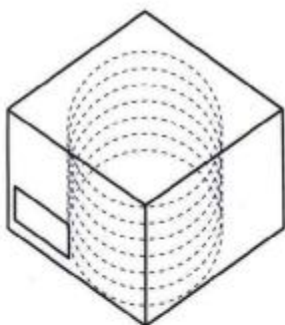


CARRIER TAPE H85-00192
width=16,00 depth=1.70
COVER TAPE H85-00193
width=13.40


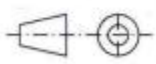
LENGTH OF TAPE:

- Leader section: min 350 mm before component section
- Trailer section: min 40 mm after component section.

Empty part cavities at leader and trailer section of the tape must be sealed with top cover tape.



- BOX H85-00128 1 pcs
(182x182x125)
- LABEL 1 pcs/BOX
- REEL H85-00164 6 pcs
(D180, W28)
- REEL LABEL 1 pcs/REEL

MATERIAL			
HANDLINGS			
		RATIO	DRWN 161007 PeHa H
			DGNER G
			CHKD F
			APPRD E
			APPRD BY D
PRODUCT	H90-0Y838		C
			B
			A
DENOMINATION	PACKING FORM	VERSION	MOD/DATE/NAME

X-ON Electronics

Largest Supplier of Electrical and Electronic Components

Click to view similar products for [Antennas](#) category:

Click to view products by [PulseLarsen](#) manufacturer:

Other Similar products are found below :

[GAN30084EU](#) [930-033-R](#) [GW17.07.0250E](#) [1513563-1](#) [EXE902SM](#) [APAMPG-117](#) [MAF94383](#) [W3908B0100](#) [W6102B0100](#) [YE572113-30RSMM](#) [108-00014-50](#) [66089-2406](#) [SPDA17RP918](#) [A09-F8NF-M](#) [A09-F5NF-M](#) [RGFRA1903041A1T](#) [W3593B0100](#) [W3921B0100](#) [SIMNA-868](#) [SIMNA-915](#) [SIMNA-433](#) [W1044](#) [W1049B090](#) [A75-001](#) [WTL2449CQ1-FRSMM](#) [CPL9C](#) [EXB148BN](#) [0600-00060](#) [TRA9020S3PBN-001](#) [Y4503](#) [GD5W-28P-NF](#) [MA9-7N](#) [GD53-25](#) [GD5W-21P-NF](#) [C37](#) [MAF94051](#) [MA9-5N](#) [EXD420PL](#) [B1322NR](#) [QWFTB120](#) [MAF94271](#) [MAF94300](#) [GPSMB301](#) [FG4403](#) [AO-AGSM-OM54](#) [5200232](#) [MIKROE-2349](#) [WCM.01.0111](#) [MIKROE-2393](#) [MIKROE-2352](#)