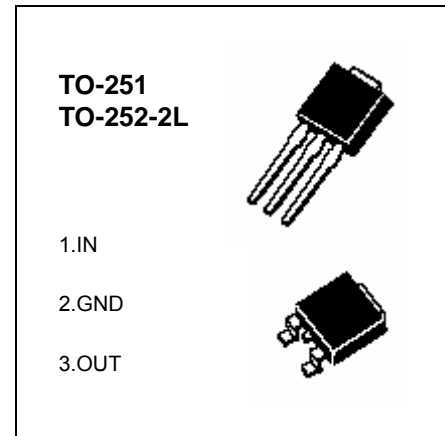


78M05

Three-terminal positive voltage regulator

FEATURES

- Maximum Output current
I_{OM}: 0.5 A
- Output voltage
V_O: 5V
- Continuous total dissipation
P_D: 1.25 W



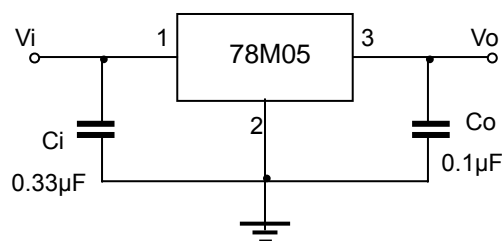
ABSOLUTE MAXIMUM RATINGS (Operating temperature range applies unless otherwise specified)

Parameter	Symbol	Value	Unit
Input Voltage	V _i	25	V
Operating Junction Temperature Range	T _{OPR}	0-+125	°C
Storage Temperature Range	T _{STG}	-65-+150	°C

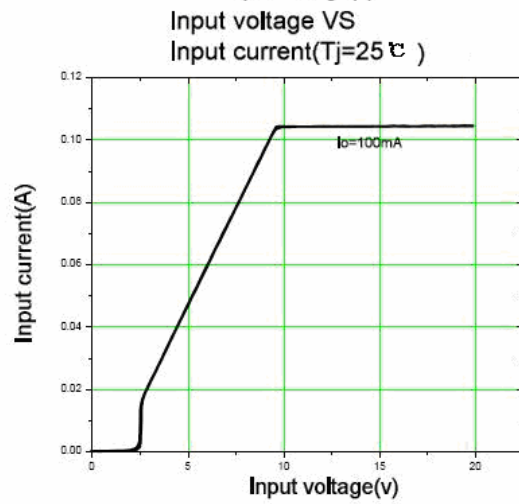
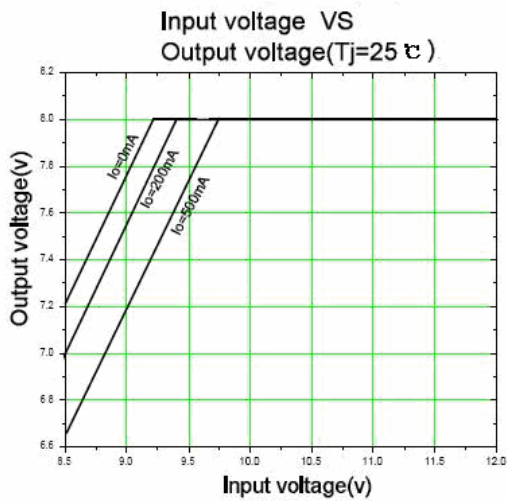
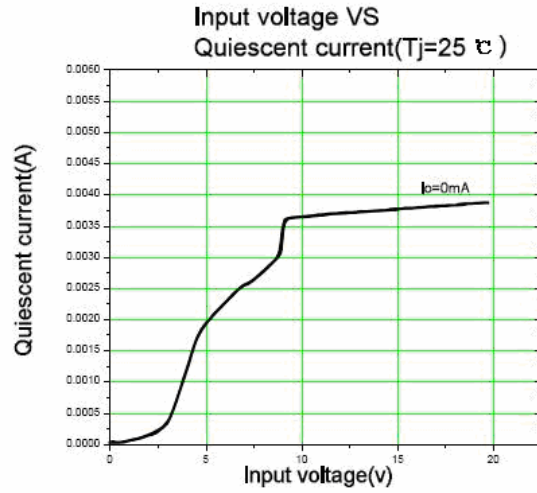
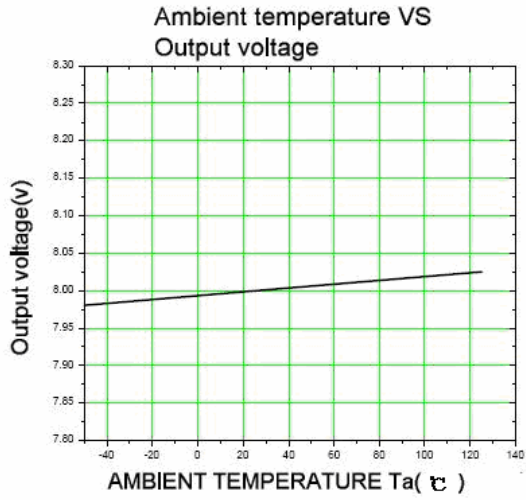
ELECTRICAL CHARACTERISTICS (V_i=10V, I_o=350mA, C_i=0.33μF, C_o=0.1μF, unless otherwise specified)

Parameter	Symbol	Test conditions	MIN	TYP	MAX	UNIT
Output voltage	V _o	25°C	4.8	5	5.2	V
		7V ≤ V _i ≤ 20V, I _o =5mA-350mA P _o ≤ 15W	0-125°C	4.75	5	5.25
Load Regulation	ΔV _o	I _o =5mA-0.5A 25°C		15	100	mV
		I _o =5mA-200mA 25°C		5	50	mV
Line regulation	ΔV _o	7V ≤ V _i ≤ 25V, I _o =200mA 25°C		3	100	mV
		8V ≤ V _i ≤ 25V, I _o =200mA 25°C		1	50	mV
Quiescent Current	I _q	25°C		4.2	6	mA
Quiescent Current Change	ΔI _q	8V ≤ V _i ≤ 25V, I _o =200mA 0-125°C			0.8	mA
		5mA ≤ I _o ≤ 350mA 0-125°C			0.5	mA
Output Noise Voltage	V _N	10Hz ≤ f ≤ 100KHz 25°C		40	200	uV
Ripple Rejection	RR	8V ≤ V _i ≤ 18V, f=120Hz, I _o =300mA 0-125°C	62	80		dB
Dropout Voltage	V _d	I _o =350mA 25°C		2	2.5	V
Short Circuit Current	I _{sc}	V _i =10V 25°C		300		mA
Peak Current	I _{pk}	25°C		0.5		A

TYPICAL APPLICATION



Typical Characteristics



X-ON Electronics

Largest Supplier of Electrical and Electronic Components

Click to view similar products for [Linear Voltage Regulators](#) category:

Click to view products by [PUOLOP](#) manufacturer:

Other Similar products are found below :

[LV56831P-E](#) [LV5684PVD-XH](#) [MCDTSA6-2R](#) [L7815ACV-DG](#) [PQ3DZ53U](#) [LV56801P-E](#) [TLE42794G](#) [L78L05CZ/1SX](#) [L78LR05DL-MA-E](#) [636416C](#) [714954EB](#) [BA033LBSG2-TR](#) [LV5680P-E](#) [L78M15CV-DG](#) [TLS202B1MBV33HTSA1](#) [L79M05T-E](#) [TLS202A1MBVHTSA1](#) [L78LR05D-MA-E](#) [NCV317MBTG](#) [NTE7227](#) [LV5680NPVC-XH](#) [LT1054CN8](#) [MP2018GZD-5-Z](#) [MP2018GZD-33-Z](#) [MIC5281-3.3YMM](#) [RT9078-28GQZ](#) [MC78L06BP-AP](#) [TA48LS05F\(TE85L,F\)](#) [TC47BR5003ECT](#) [TCR2LN12,LF\(S](#) [TCR2LN28,LF\(S](#) [TCR2LN30,LF\(S](#) [TCR3DF295,LM\(CT](#) [TCR3DF40,LM\(CT](#) [BA178M20CP-E2](#) [L78M05TL-TL-E](#) [L78M12ABDT](#) [LR645N3-G-P003](#) [LR645N3-G-P013](#) [ZXTR2005P5-13](#) [SCD7812BTG](#) [TCR3DF335,LM\(CT](#) [ZXTR2012K-13](#) [TLE42994E V33](#) [ZXTR2008K-13](#) [ZXTR2005K-13](#) [L88R05DL-E](#) [ADP3300ARTZ-2.7RL7](#) [LM120K-15/883](#) [IFX54441LDVXUMA1](#)