



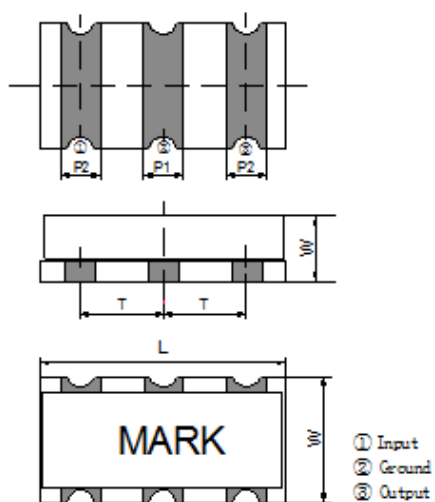
PN : SMD Type Ceramic Resonator

Series : ZTT (with built-in capacitor)

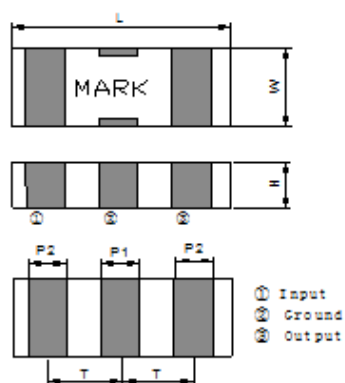
Technical Characteristics

Part Number	Frequency Range	Frequency Accuracy	Stability Over Temperature	Operating Temperature (°C)	Aging For 10 Years (%)
	(MHz)	(%)	(-25~+85°C) (%)		
ZTCC*MG	2.00-8.00	±0.5	±0.3	-25~+85	±0.3
ZTTCR*MG	4.00-12.00	±0.5	±0.3	-25~+85	±0.3
ZTTCE*MG	8.00-12.00	±0.5	±0.3	-25~+85	±0.2
ZTTCS*MT	6.00-13.00	±0.5	±0.4	-25~+85	±0.3
ZTTCV*MT	6.00-13.00	±0.5	±0.4	-25~+85	±0.3
ZTTCS*MX	13.01-60.00	±0.5	±0.3	-25~+85	±0.2
ZTTCV*MX	16.00-60.00	±0.5	±0.3	-25~+85	±0.2
ZTTCW*MX	20.00-60.00	±0.5	±0.3	-25~+85	±0.2
ZTTCP*MG	2.00-12.00	±0.5	±0.3	-25~+85	±0.3

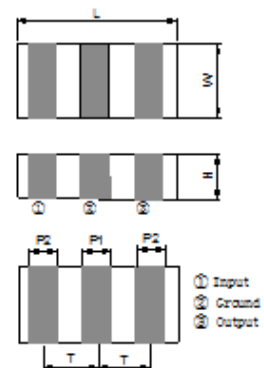
Figure and Dimensions



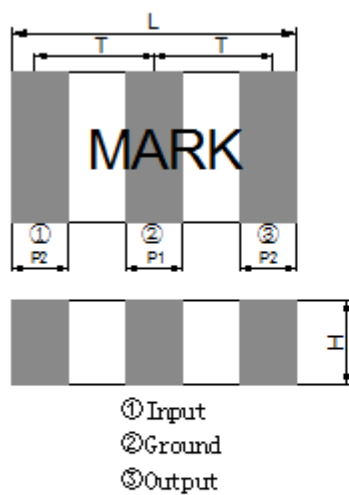
ZTTCC □ MG ↙



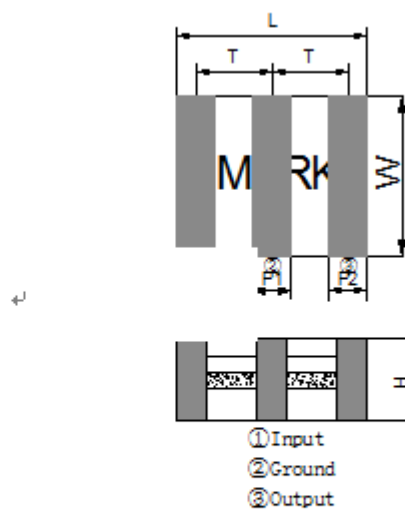
ZTTCR □ MG ↙



ZZTTC □ MG ↙



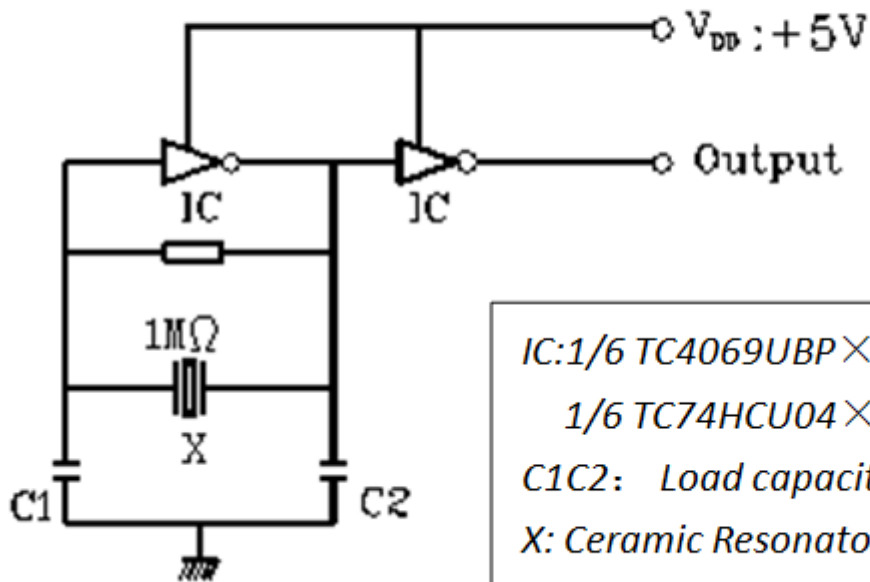
ZTTCP □ MG ↙



ZTTCS/CV/CW □ MT/MX ↙

Part Number	Size (mm)					
	L	W	H	P1	P2	T
ZTTCC*MG	7.4 ± 0.2	3.4 ± 0.2	1.8 ± 0.2	1.2 ± 0.2	1.2 ± 0.2	2.5 ± 0.2
ZTTCR*MG	4.5 ± 0.2	2.0 ± 0.2	1.2 Max	0.8 ± 0.2	0.8 ± 0.2	1.5 ± 0.2
ZTTCE*MG	3.2 ± 0.2	1.3 ± 0.2	1.0 Max	0.4 ± 0.2	0.4 ± 0.2	1.2 ± 0.2
ZTTCS*MT	4.7 ± 0.2	4.1 ± 0.2	$(1.2+A) \pm 0.2$	1.0 ± 0.2	0.8 ± 0.2	1.95 ± 0.2
ZTTCV*MT	3.7 ± 0.2	3.1 ± 0.2	$(1.0+A) \pm 0.2$	0.9 ± 0.2	0.7 ± 0.2	1.5 ± 0.2
ZTTCS*MX	4.7 ± 0.2	4.1 ± 0.2	$(1.2+A) \pm 0.2$	1.0 ± 0.2	0.8 ± 0.2	1.95 ± 0.2
ZTTCV*MX	3.7 ± 0.2	3.1 ± 0.2	$(1.0+A) \pm 0.2$	0.9 ± 0.2	0.7 ± 0.2	1.5 ± 0.2
ZTTCW*MX	2.5 ± 0.2	2.0 ± 0.2	1.2 Max	0.5 ± 0.2	0.4 ± 0.2	1.0 ± 0.2
ZTTCP*MG	6.0 ± 0.2	3.0 ± 0.2	1.5 ± 0.2	1.2 ± 0.2	1.2 ± 0.2	2.5 ± 0.2
			1.7 ± 0.2			
			1.8 ± 0.2			

TEST CIRCUIT FOR MOS IC



IC: 1/6 TC4069UBP × 2 (2.00-13.00MHz)
 1/6 TC74HCU04 × 2 (13.01-60.00MHz)
 C1C2: Load capacitance
 X: Ceramic Resonator

X-ON Electronics

Largest Supplier of Electrical and Electronic Components

Click to view similar products for [Resonators](#) category:

Click to view products by [QLT Power](#) manufacturer:

Other Similar products are found below :

[ECS-SR1-8.00-B](#) [B39431R820H210](#) [CSAC2.00MGCM-TC](#) [ECS-HFR-40.00-B-TR](#) [ZTB455E](#) [ECS-CR2-16.00-A-TR](#) [ECS-HFR-20.00-B-TR](#)
[ECS-CR2-20.00-A-TR](#) [RO3164E-3](#) [ASR418S2-T](#) [CSTLS8M00G53093-A0](#) [CSTNE12M0G52A000R0](#) [CSTLS18M4X54-A0](#)
[CSTLS16M9X53Z-B0](#) [CSTLS24M0X51-A0](#) [CSTLS25M0X51-B0](#) [CSTLS18M0X51-B0](#) [CSTNE8M00G520000R0](#) [CSTLS4M00G53093-A0](#)
[CSTLS18M4X53-A0](#) [CSTNE16M0V510000R0](#) [CSTLS30M0X53-B0](#) [CSTLS33M8X53-B0](#) [CSTLS16M9X53-A0](#) [CSTLS6M40G56-B0](#)
[CSTLS6M25G56-A0](#) [CSTNE14M7V510000R0](#) [CSTLS18M4X53-B0](#) [CSTLS33M0X51-B0](#) [CSTNE8M00G52Z000R0](#) [CSTLS5M50G56-B0](#)
[7D038400I01](#) [TAXM24M2ILDBET2T](#) [TAXM26M2IHDBET2T](#) [146-32.768-12.5-20-20/A](#) [7B009843M01](#) [CF4016M00009T8188042](#)
[S32400001B0730D1JB](#) [X252016MLB4SI](#) [Q13MC40520002](#) [S36003271C2070DY](#) [CJ13-240001510B20](#) [CSTLS4M19G56-B0](#)
[9AC04194152080D2JB](#) [CST3.58MGW](#) [CSTCR4M91G55B-R0](#) [CSTLS3M68G56-B0](#) [S2100327072090](#) [FC-12M32.768KHZ9PF20PPM](#)
[7Y032768NW2](#)