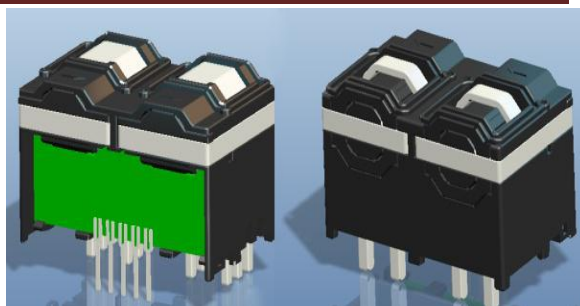


QBC07P-X 系列闭环型霍尔电流传感器

QBC07P-X Series closed Loop Mode Hall Effect Current Sensor

南京强能传感技术有限公司



QBC07P-X 系列闭环型电流传感器的初、次级之间是绝缘的，具有超强抗干扰能力；用于测量直流、交流和脉动电流。

QBC07P-X series current sensor is closed loop device based on the measuring principle of the hall effect, with a galvanic isolation between primary and secondary circuit. It has strong anti-jamming ability and provides accurate electronic measurement of DC, AC or pulsed currents.

电参数 Electrical data ($T_a=25^{\circ}\text{C} \pm 5^{\circ}\text{C}$, $R_L=2\text{K}\Omega$, $C_L=10000\text{PF}$)

参数 Parameter	型号 Type	QBC07P 03-X	QBC07P 05-X	QBC07P 10-X	QBC07P 15-X	QBC07P 20-X	QBC07P 25-X	QBC07P 30-X	QBC07P 40-X	QBC07P 50-X	单位 Unit
额定输入电流 (I _{pn}) Rated input (I _{pn})		3	5	10	15	20	25	30	40	50	A
测量电流范围(I _p) Measuring range(I _p)		9	15	30	45	60	75	90	120	150	A
匝比 (N _p /N _s) Turns ratio(N _p /N _s)		7: 2100	7: 1750	2: 2000	2: 2250	1: 2000	1: 2500	1: 2250	1: 2000	1: 2000	T
输入脚尺寸 Size of input pins		∅0.8	∅0.8	∅1.1	∅1.1	□1.5 ×1.5	□1.5 ×1.5	□1.5 ×1.5	□6.28 ×1.0	□6.28 ×1.0	mm
内接测量电阻 Inside resistance		200 ±0.1%	100 ±0.1%	200 ±0.1%	100 ±0.1%	200 ±0.1%	200 ±0.1%	100 ±0.1%	50 ±0.1%	40 ±0.1%	Ω
额定输出电压 Rated output	@ I _p =±I _{pn}	±4±0.5%									V
电源电压 Supply voltage		±15±5%									V
功耗电流 Power consumption		20+I _p X(N _p /N _s)									mA
零点失调电压 Zero voltage	@I _p =0	≤±0.03									V
失调温漂 Offset drift	@ -40℃~+85℃	≤0.5									mV/℃
输出温漂 Output drift	@ -40℃~+85℃	≤0.5									mV/℃
线性度 Linearity	@ I _p =0-±I _{pn}	≤0.1									%FS
响应时间 Response time	@ I _p =I _{pn} , 50 A/μS, 10%-90%	<1.0									μs
带宽 Bandwidth	@ -3dB	0—100									KHz
绝缘电压 Galvanic isolation	@ 50/60Hz, AC, 1min	3.0									KV
绝缘强度 Dielectric strength		>1000									MΩ

QBC07P-X 系列闭环型霍尔电流传感器

QBC07P-X Series closed Loop Mode Hall Effect Current Sensor

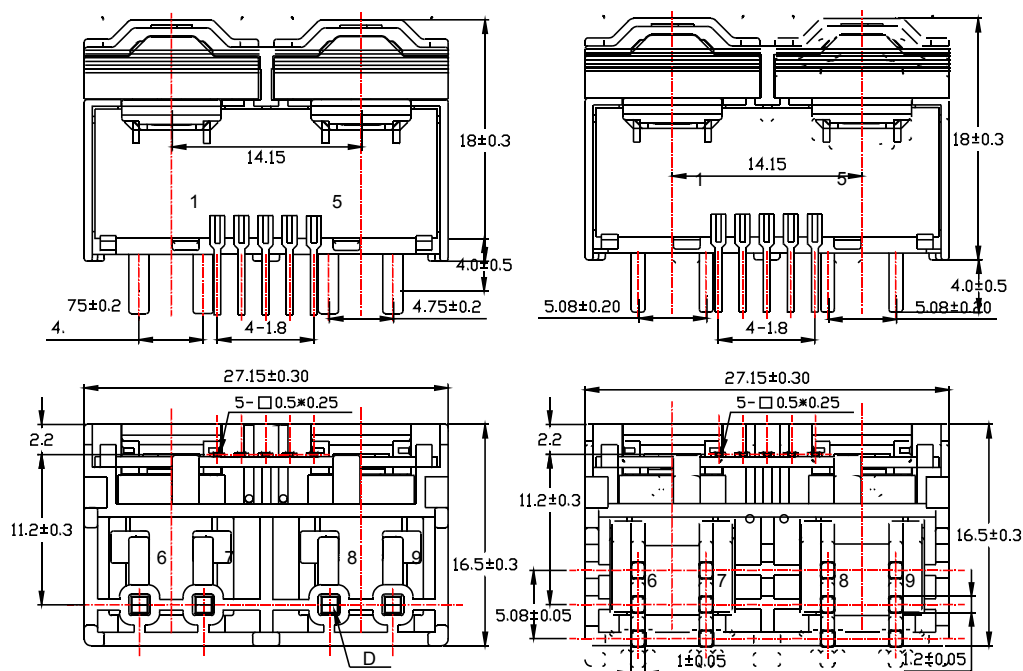
总体参数 General date

	数值 Value	单位 Unit	符号 Symbol
工作温度 Operating temperature	-40 to +85	°C	TA
储存温度 Storage temperature	-40 to +125	°C	TS
毛重(约) Mass (approx)	16	g	M

结构参数 Mechanical dimension(for reference only)

QBC07P(03-30)-X

QBC07P(40-50)-X



Terminal Pin Identification

- 1.....+15V
- 2.....-15V
- 3.....Output1
- 4.....Output2
- 5.....0V
- 6.....primary input current(+)
- 7.....primary input current(--)
- 8.....primary input current(+)
- 9.....primary input current(--)

Primary conductor diameter

QBC	07P03/05-X	07P10/15-X
D	Φ0.8	Φ1.1
QBC	07P20/25/30-X	07P40/50-X
D	1.5X1.5	6.28X1.0

使用说明 Directions for use

1. 当待测电流从传感器穿过，即可在输出端测得电压大小。(注意：错误的接线可能导致传感器损坏)
When the current will be measured goes through a sensor, the voltage will be measured at the output end.
(Note: The false wiring may result in the damage of the sensor).
2. 可按用户需求定制不同额定输入电流和输出电压的传感器。
Custom design in the different rated input current and the output voltage available.

电话: 025-52619808 传真: 025-52619628 网址: www.china-cgq.cn;www.chinasensors.net 邮箱: cgq@china-cgq.cn

X-ON Electronics

Largest Supplier of Electrical and Electronic Components

Click to view similar products for [Industrial Current Sensors](#) category:

Click to view products by [QN](#) manufacturer:

Other Similar products are found below :

[CSNS181](#) [CSNS300M-001](#) [7SHT-301-E](#) [CSCA0075A000U12J01](#) [SAO-S1N](#) [L34S1T5D15T](#) [CS050BT5](#) [L34S1T0D15T](#) [CSNS300M-500](#)
[ACS711ELCTR-25AB-T](#) [ACS724LLCTR-10AB-T](#) [ACS770LCB-050U-PFF-T](#) [20320500101](#) [20310508201](#) [CCT354571-300-24-00](#) [T60404-](#)
[N4644-X201](#) [LCSC10T12](#) [20320300101](#) [2813473](#) [DCSA20](#) [S21S180D15JN](#) [T60404-N4644-X051](#) [L31S300S05FS](#) [ISB-300-A-802](#) [ISB-](#)
[175-A-802](#) [ISB-100-A-802](#) [ISB-100-A-800](#) [LPMG12](#) [ECS41BC](#) [ECSH40AC](#) [ECS41BD](#) [SAO-SU1N](#) [ECS41AC](#) [A-CS100B](#)
[ACS712ELCTR-20A-T](#) [BB-JC10F50-V](#) [BCY2-100IOV2M](#) [BCY2-50IOV2M](#) [BCY2-75IOV2M](#) [BL1Y2-150IOV2L](#) [BSL-800IOV2M](#) [BSY2-](#)
[100/4IOV2](#) [BSY2-150/4IOV2](#) [BSY2 -75/4IOV2](#) [BSL-800IOV2L](#) [BCY2-300IOV2M](#) [BCY2-200IOV2M](#) [CS010GT](#) [CS100EK1T5](#)
[CSM010PS3.3](#)