



Qoltec Monolith voltage converter 600 MS Wave | 12V to 230V | 300/600W | USB

Product code: 51924

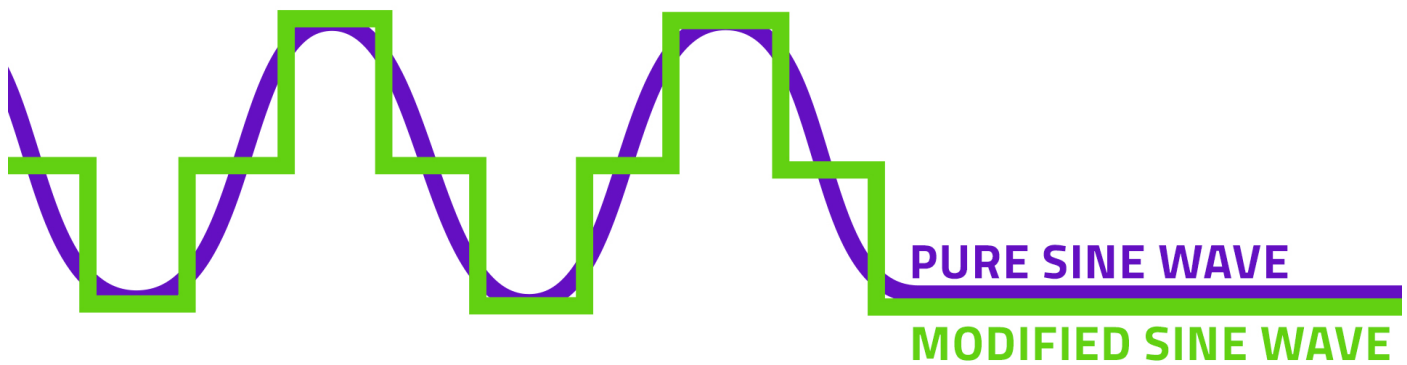
The Monolith voltage converter by Qoltec MS wave is a device that changes the DC voltage of 12V to AC voltage of 230V. It is ideal where there is no direct access to the power grid. It will easily power equipment such as a laptop, computer, games console, kettle or hairdryer or charge your smartphone. The product has built-in mains sockets compatible with European plugs and a USB port.

- Cooling is provided by a fan
- Soft start function
- Additional fuses included

MODIFIED SINE WAVE - SIMPLE DESIGN, LOWER FAILURE RATE



Devices that do not require a pure sine wave such as a computer, laptop and small household appliances will work without any problem with a modified sine wave inverter, which produces an approximated sine wave at the output, whose rms value is the same as the sine wave found in the power grid. This type of inverter is all about lower failure rates and simple design.



GIVE YOUR DEVICES THE RIGHT CONDITIONS TO WORK



When choosing a suitable inverter, it is worth paying attention to the power value and voltage of the battery, which must be consistent with that indicated on the inverter to ensure that our equipment has the right conditions for work. Also important is the number of connected devices, for example, connecting a laptop and a printer, the power of both devices should be added up. Remember that the power consumed by the connected device should not exceed 85% of the rated power of the inverter.

DONT LOSE ENERGY ON THE JOURNEY



The product is ideal as a power source in **campers or trailers during family trips**. Are you planning a longer camping or lakeside vacation and looking for a way to plug in your laptop or charge your phone on the yacht? It is worthwhile to be well prepared. With a Qoltec brand inverter, you will be able to power your devices anywhere and enjoy convenience and comfort. The voltage converter will be the ideal power source for **yacht and boat owners**. This smart device will allow you to power your equipment during long trips away from home, it has a USB port and power outlets to which you can plug electrical devices. Without any obstacles, you can charge your phone, laptop or connect any other device whose power does not exceed the power of the inverter, what's more, you can charge the battery at the same time. Devices with a power of up to 150W such as a smartphone or laptop while traveling can be powered by energy drawn from the cigarette lighter socket. **Depending on the power consumed by the device**, the inverter 300W can power :

RTV equipment : TV, game console, music equipment, radio,

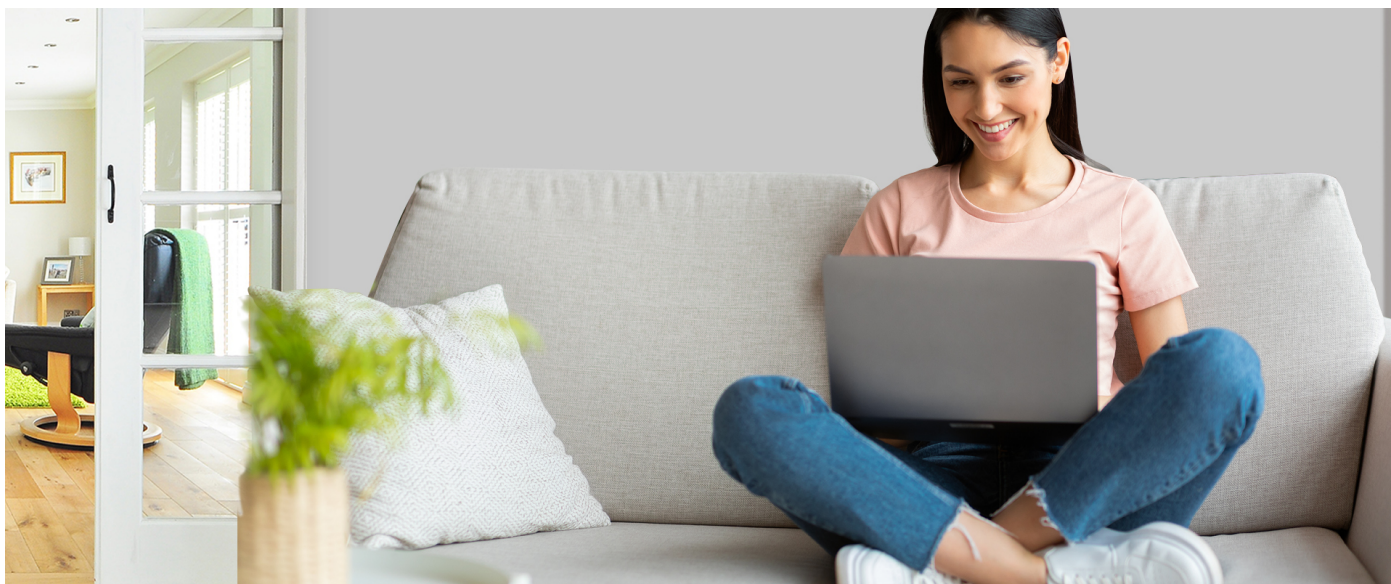
Office equipment : computers, printers, laptops, The inverter can also be used not only on the go, but also as an emergency power source to power equipment as a UPS during a temporary power outage from the power grid.

DURABLE AND LIGHTWEIGHT HOUSING



The case is designed from **high quality aluminum** that is resistant to **shock and mechanical damage**. It is an ideal choice for those who like to travel for long periods of time. Thanks to the inverter with built-in power socket, you can use almost any device that requires connection to the socket. The product has a **USB port** for charging mobile devices and a **fan** that takes care of proper cooling .

FULL GUARANTEE FOR SAFE USE



The product is equipped with a number of protections that guarantee full protection for connected devices. In addition, the kit includes a **spare fuse** to ensure the longest possible operation of the equipment.

The converter has : **UVP protection** - protects devices from too low voltage at the output, which affects the stability of connected devices, **SCP protection** - is a short circuit protection, **OVP protection** - is protection against too high output voltage and damage to connected devices, **OCP protection** - is protection against too high current on the line, **OTP protection** - is protection against overheating.



CONFIDENCE CONFIRMED BY A WARRANTY

Do you care about the high quality of the product you buy? Our solutions will meet your expectations. The product comes with a **24-month warranty** valid from the date of purchase.

TECHNICAL DATA

Producer	Qoltec
Rated Power	300W
Peak power	600W
Input voltage	12V
Output voltage	230V
Output frequency	50 Hz 2HZ
Waveform	Modified sine wave
Idle current	0.35A
Efficiency	90%
Cooling system	1 x Fan
USB	5V/2A (QC 3.0 - 18W)
Protection	OVP/OCP/OTP/SCP/UVP
Protection against inverse polarity	Fuse
Usage	Computer, monitor, office equipment, RTV equipment, games console, audio/video equipment, servers, monitoring equipment, lighting, small appliances, charging mobile devices
Material	Aluminium
Operating temperature	-10°C ~ +50°C
EAN code	5901878519241

X-ON Electronics

Largest Supplier of Electrical and Electronic Components

Click to view similar products for [Power Inverters](#) category:

Click to view products by [QOLTEC](#) manufacturer:

Other Similar products are found below :

[PV-400FC](#) [PV550](#) [SOLAR BOOST MPPT-3000 PRO](#) [UPS-2000SR](#) [UPS-4000SR](#) [UPS-1200SR](#) [3SPS200012](#) [3SPS500048](#) [SINUS PRO 2000 E 12/230V](#) [SINUS PRO 3000 E 48/230V](#) [51933](#) [POWER SINUS 3000 12/230V](#) [51925](#) [51924](#) [NTU-2200-224EU](#) [NTS-2200-224EU](#) [NTS-750-212EU](#) [53875](#) [ISI-501-224EU](#) [3IPSMPT09](#) [51928](#) [53887](#) [NTS-1200-224EU](#) [51927](#) [51936](#) [IPS-4000S 12V/230V](#) [IPS-3000S 12V/230V](#) [IPS-3000S 24V/230V](#) [IPS-4000S 24V/230V](#) [GREEN BOOST MPPT 3000](#) [51934](#) [51939](#) [NTU-2200-248EU](#) [ISI-501-248EU](#) [NTU-1200-212EU](#) [NTU-2200-212EU](#) [3IPSMPT41](#) [53876](#) [53886](#) [51932](#) [51926](#) [NTS-750-224EU](#) [51938](#) [SINUS600 24V](#) [PE-35](#) [PE-40](#) [PS-250](#) [3IPS100012](#) [TS-1500-224B](#) [ISI-500-148A](#)