



Qoltec Photovoltaic solar cable | 4mm | 100m | black

Product code: 53851

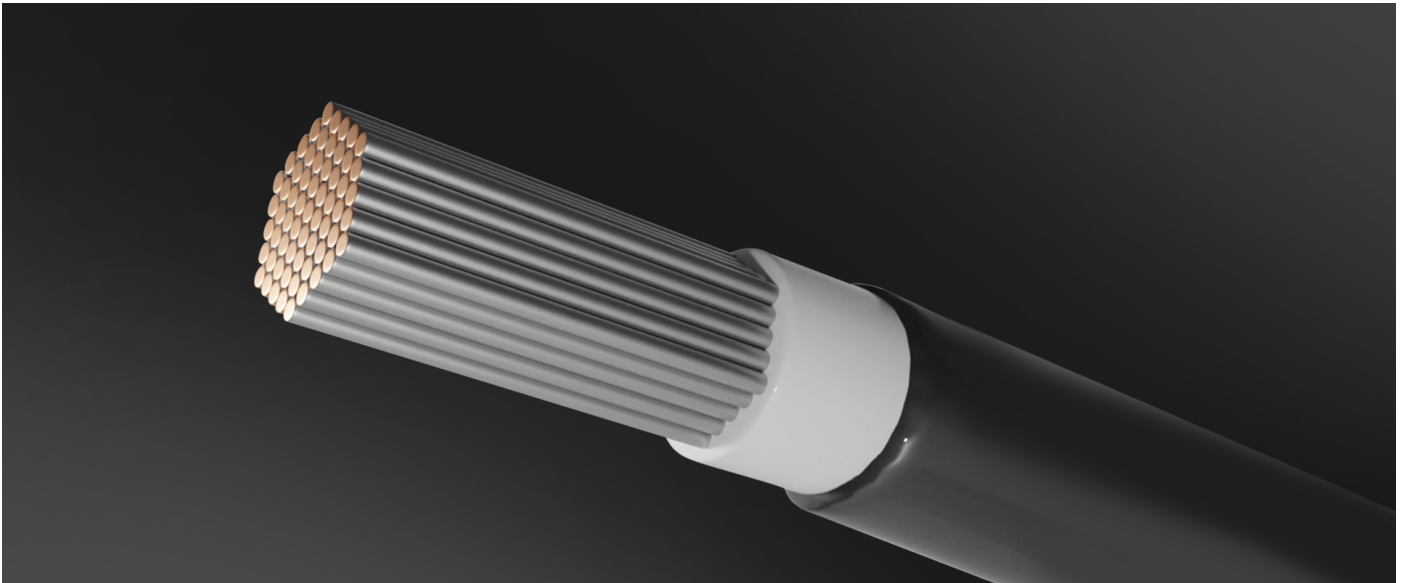
High-quality solar cable from Qoltec designed specifically for photovoltaic installations. It has very good mechanical properties and is flexible. Single-core cable with multi-stranded conductor made of tinned copper wires. Coating and insulation made of cross-linked halogen-free material.

ENJOY A RELIABLE PHOTOVOLTAIC INSTALLATION



In order to enjoy a fully operational and efficient photovoltaic installation, it is very important to select the individual components that are part of this system correctly. One of them are the solar cables and wires that connect the PV panels and transfer the produced energy to the inverter. It is therefore worth paying attention to the quality of the cable, as a photovoltaic installation is not only exposed to strong sunlight and UV radiation, which causes degradation of the materials, but also to constant changes in weather conditions. Qoltec solar cables meet all the requirements of EN 50618 and IEC 62930, which means that they are resistant to all these degradation factors and will provide us with at least 25 years of service.

SAFE AND DURABLE



The Qoltec solar cable available from us has been manufactured specifically for installation in a photovoltaic system is featured by:

- a **long service life** of at least 25 years,
- insulation made of **cross-linked XLPE polyethylene, halogen-free**,
- strong and flexible conductor made of **soft tin-plated copper wires**,
- safe, the cable meets **all the requirements of EN 50618 and IEC 62930**,
- is resistant to temperatures down to **-40 C**,
- has a maximum continuous operating temperature of **up to 90 C**, while the maximum conductor temperature may reach 120 C,
- can be used for both outdoor and indoor installations,
- has reaction to **fire class Eca**,
- **flame resistant**, in accordance with IEC 60332-1-2

CONFIDENCE CONFIRMED BY A WARRANTY

All solar cables are guaranteed for **25 years**, from the date of purchase.

TECHNICAL DATA

Producer	Qoltec
Type	H1Z2Z2-K
Standard	EN 50618/IEC62930
Power	82.5 kW
Rated current	55 A
Rated voltage	1500 V
Structure of the conductor	single wire made of tinned soft copper wires
Cross-section conductor of a cable	4mm
Insulating material	Irradiation cross-linked polyolefin, Halogen-free
Coating	Irradiation cross-linked polyolefin, Halogen-free
Color	Black
Conductor thickness	2.58 mm
Thickness of the insulation coating	0.7 mm
External shell thickness	0.8 mm
Resistance to pressure	AC-6.5KV/5min
Fire resistance class	Eca
Flame resistance	IEC 60332-1-2
Ozone resistance	IEC 60811-403
UV resistance	720h
Cable length	100 m
Temperature resistance	-40°C ~ +90°C
Maximum conductor temperature	120 C
Service life	25 years
Dimensions (D/L x W x H)	245 x 245 x 105
Package depth / length [mm]	245
Package width [mm]	245
Package height [mm]	105
Certificate	CE
Net weight [kg]	6
Gross weight [kg]	6
Warranty	25 years
EAN code	5901878538518

X-ON Electronics

Largest Supplier of Electrical and Electronic Components

Click to view similar products for [Hook-up Wire](#) category:

Click to view products by [QOLTEC](#) manufacturer:

Other Similar products are found below :

[8918-BRN-1000](#) [8920-DK-BLU-1000](#) [01776.38.01](#) [M22759/16-14-5-500FT](#) [7046-BLACK-100](#) [7053-RED-1000](#) [F25935-000](#) [F60898-000](#)
[82A0811-4-9-G110](#) [83004-ORG-1000](#) [83004-YEL-100](#) [83005-LT-BLU-1000](#) [83025-VIO-1000](#) [8523-RED-100](#) [8524-WHT-100](#) [8525-ORG-1000](#) [8530-BLK-1000](#) [8530-LT-BLU-100](#) [8538-009-1000](#) [8597-LT-BLU-100](#) [956298-4](#) [138498-000](#) [BFWUL3239-24-PINK](#) [C2016A.12.05](#)
[C2016A.12.07](#) [C2065A.12.02](#) [8916-GRY-500](#) [8918-RED-100](#) [8919-DK-BLU-1000](#) [8919-YEL-100](#) [8920-YEL-100](#) [933205-000](#) [2841/7-YELLOW-1000](#) [2842/7-ORANGE-100](#) [2842/7-RED-1000](#) [2843/19-BLUE-100](#) [2843/7-GREEN-100](#) [2844/7-BLACK-1000](#) [2845/7-RED-100](#)
[2855/1-BROWN-1000](#) [285750-010](#) [956299-4](#) [961473-000](#) [298-SILVER-100](#) [3047-YELLOW-100](#) [3048-BLUE-1000](#) [3048-YELLOW-1000](#)
[3049-RED-100](#) [3049-YELLOW-100](#) [3050-WHITE-100](#)