

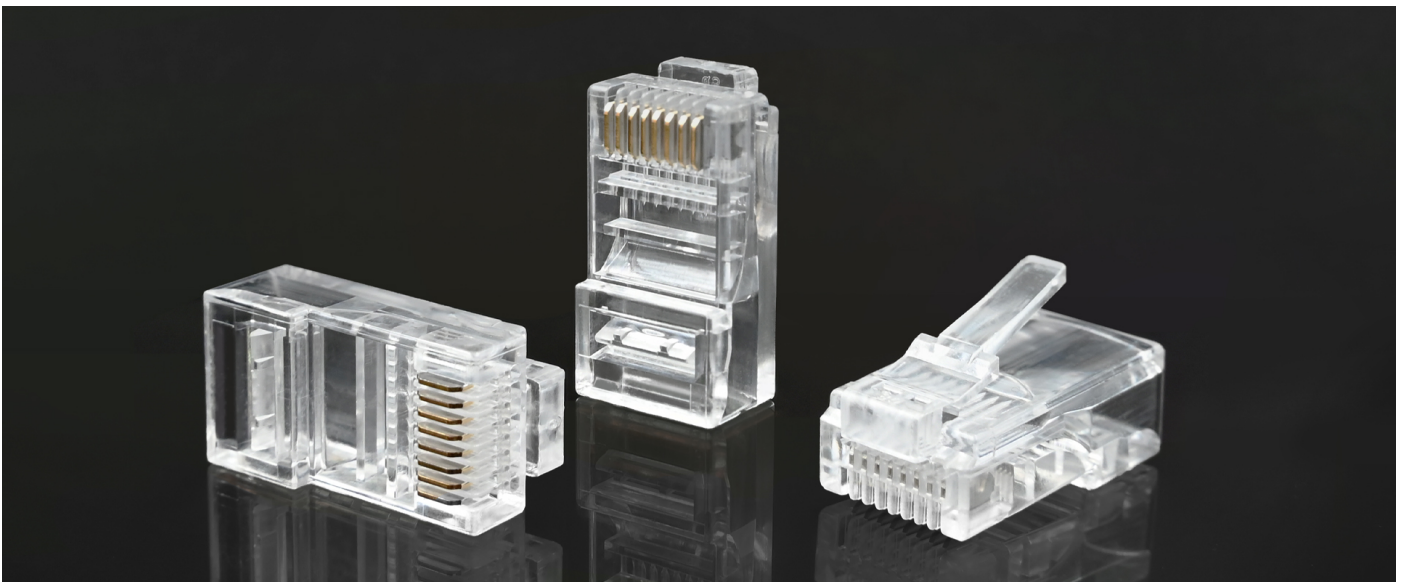


Qoltec RJ45 modular connector | CAT6 | UTP | Gold-plated contacts | 100 pieces

Product code: 54552

RJ45 connector commonly used to create connections in LANs, to connect unshielded Cat6 category Ethernet cables. The RJ45 connector has a distinctive housing that holds the wires in the correct order and provides mechanical protection. It has 8 pins and gold-plated contacts. The set contains 100 pieces.

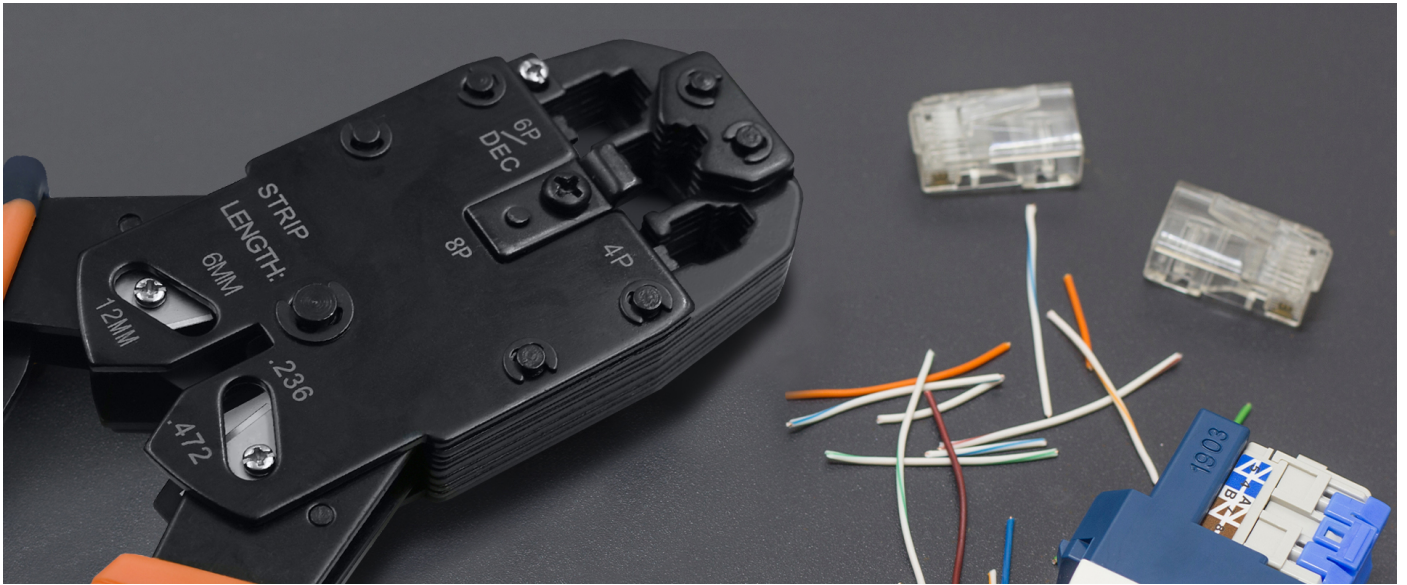
HIGHER CONNECTION RELIABILITY



Modular RJ45 UTP plugs with gold-plated contacts

A high quality set of transparent RJ45 connectors with modular construction, compatible with UTP Cat6 patchcord cables. The connector has gold-plated metal contacts for improved conductivity and corrosion protection. They have no additional protective screen. Designed for use in areas of intensive disturbance.

COMPATIBLE WITH UTP CAT6 PATCHCORD CABLES



Suitable for applications where stable and reliable data connections are required

Modular RJ45 CAT6 connectors are Category 6 compliant, meaning they are **capable of handling data transmission**, which is important in modern networks. Ideal for connecting various devices such as computers, printers, routers, monitoring, gaming consoles, etc. **This is the perfect solution for professionals** who value performance, precision and durability of their installations. We recommend using a dedicated crimping tool. Remember to make the plugs and cables compatible in terms of category to ensure optimum network performance.

CONFIDENCE CONFIRMED BY A WARRANTY



Quality Guarantee - Your Secure Connection

Do you care about the high quality of the product you are buying? Our solutions will meet your expectations. The product comes with a 24-month guarantee valid from the date of purchase.

TECHNICAL DATA

Producer	Qoltec
Standard	CAT6
Type connectors	UTP
Colour	Silver
Material	Metal + Plastic
Usage	Computer networks Home installations Audio/video systems
Additional information	100 pieces
Dimensions (D/L x W x H)	22 x 11 x 18 mm
Package contents	1 x Pack of 100 RJ45 CAT5e connectors
Package depth / length [mm]	165
Package width [mm]	120
Package height [mm]	40
Net weight [kg]	0.145
Gross weight [kg]	0.148
Warranty	24 month
EAN code	5901878545523

X-ON Electronics

Largest Supplier of Electrical and Electronic Components

Click to view similar products for [Modular Connectors](#) / [Ethernet Connectors](#) category:

Click to view products by [QOLTEC](#) manufacturer:

Other Similar products are found below :

[8949-H88/06BLKA/SN](#) [74441-0010/BKN](#) [PHP-6P6C-5](#) [GAX-3-66](#) [GDCX-PN-66](#) [GLX-A-44](#) [GLX-N-1010M-BLK](#) [GLX-S-88M-BLK](#)
[GMX-SMT4-N-88](#) [GSGX-N-2-88](#) [GSGX-N-4-88](#) [GSX-NS2-88-3.05](#) [GSX-NS-88-3.68](#) [PT-108A-8C-UL](#) [PTS-J531-8CS-50UL](#) [A-2014-0-4](#)
[GWLX-S9-88-YG](#) [DC-1021-8-WH-6](#) [1300530003](#) [1324640-4](#) [132764-001](#) [1413235](#) [MPS88RX-5000](#) [E5288-S000K3-L](#) [155302-001](#)
[AX101050](#) [AX101063](#) [AX101065](#) [AX101072](#) [AX101307](#) [AX101315](#) [AX101318](#) [AX102271](#) [AX102277](#) [AX102651](#) [AX102660](#) [AX104024](#)
[203475](#) [PC4D0018P](#) [KIT38082NI](#) [8949-B88/6](#) [2-6609208-5](#) [30-8956](#) [30-8964-100](#) [SM85](#) [SM99S01VBNN04G7](#) [17-103540](#) [191587](#) [PDI-68-RV](#) [PHP-8P8C-S-5](#)