
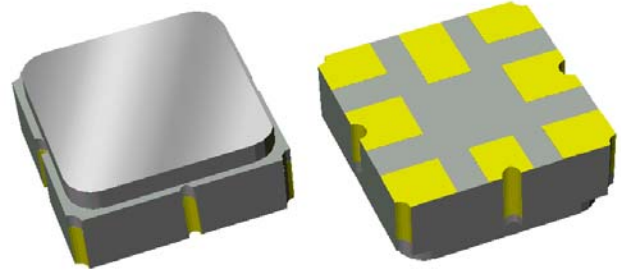


# Preliminary Data Sheet

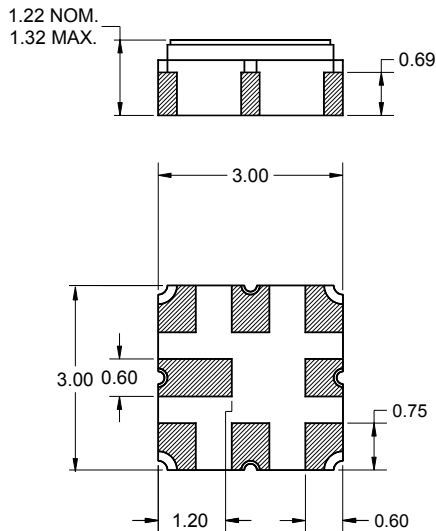
## Features

- For FRS applications
- Usable bandwidth 6 MHz
- Low loss
- High attenuation
- No impedance matching required for operation at 50 Ω
- Single-ended operation
- Ceramic Surface Mount Package (SMP)
- Hermetic
- RoHS compliant (2002/95/EC), Pb-free 



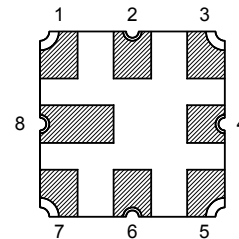
## Package

Surface Mount 3.00 x 3.00 x 1.22 mm



## Pin Configuration

Bottom View



Pin No.	Description
2	Input
6	Output
1,3,4,5,7,8	Case ground

Dimensions shown are nominal in millimeters  
 All tolerances are ±0.15mm except overall  
 length and width ±0.10mm

Body:  $Al_2O_3$  ceramic  
 Lid: Kovar, Ni plated  
 Terminations: Au plating 0.5 - 1.0μm,  
 over a 2 - 6μm Ni plating

# Preliminary Data Sheet

## Electrical Specifications <sup>(1)</sup>

Operating Temperature Range: <sup>(2)</sup> -40 to +85 °C

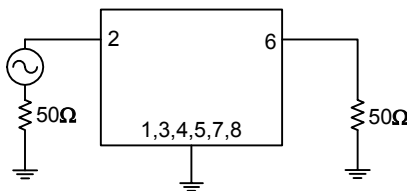
Parameter <sup>(3)</sup>	Minimum	Typical	Maximum	Unit
<b>Center Frequency</b>	-	465	-	MHz
<b>Maximum Insertion Loss</b> 462 - 468 MHz	-	1.43	1.7	dB
<b>Amplitude Variation</b> 462 - 468 MHz	-	0.16	0.5	dB
<b>Attenuation</b> 421.6 MHz	50	70	-	dB
<b>Minimum Rejection</b> 100 - 441 MHz	48	61	-	dB
441 - 445 MHz	40	62	-	dB
485 - 502 MHz	24	29	-	dB
502 - 510 MHz	40	47	-	dB
510 - 1000 MHz	40	53	-	dB
<b>Input/Output VSWR</b> 462 - 468 MHz	-	1.42	1.6	-
<b>Source Impedance <sup>(4)</sup></b>	-	50	-	Ω
<b>Load Impedance <sup>(4)</sup></b>	-	50	-	Ω

### Notes:

1. All specifications are based on the test circuit shown below
2. In production, devices will be tested at room temperature to a guardbanded specification to ensure electrical compliance over temperature
3. Electrical margin has been built into the design to account for the variations due to temperature drift and manufacturing tolerances
4. This is the optimum impedance in order to achieve the performance shown

### Test Circuit:

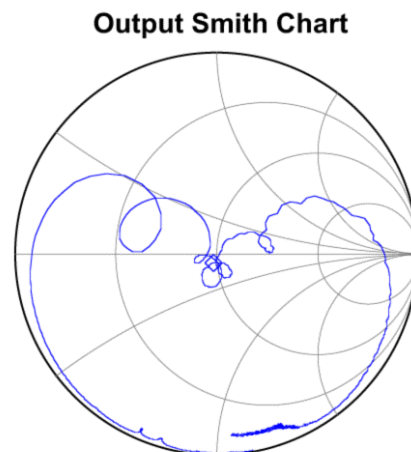
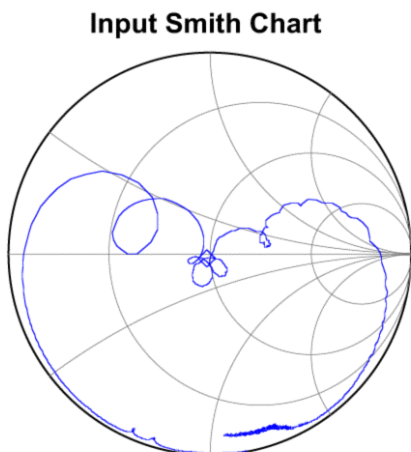
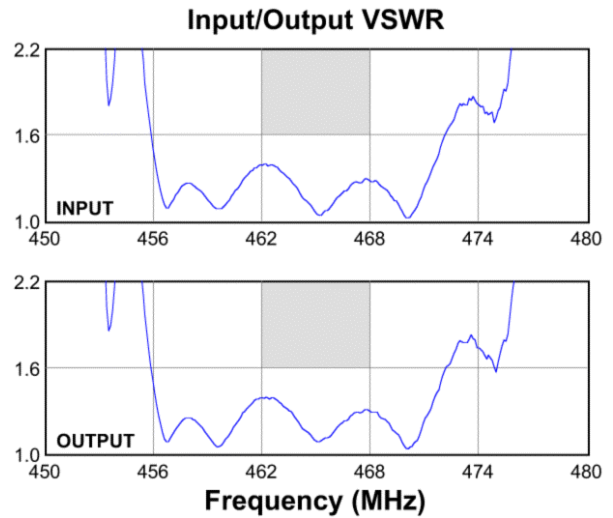
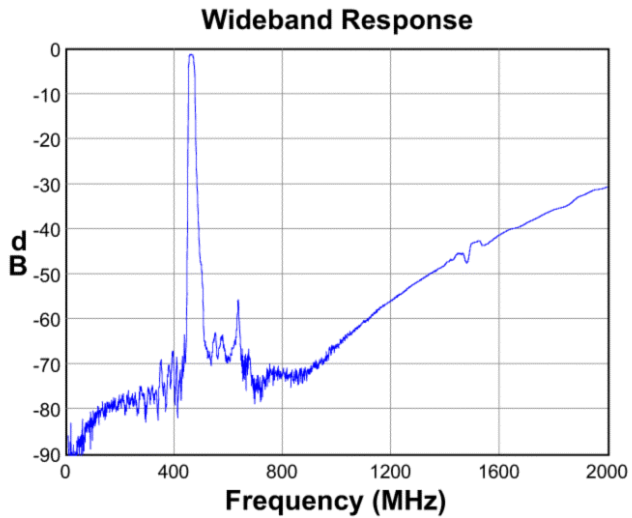
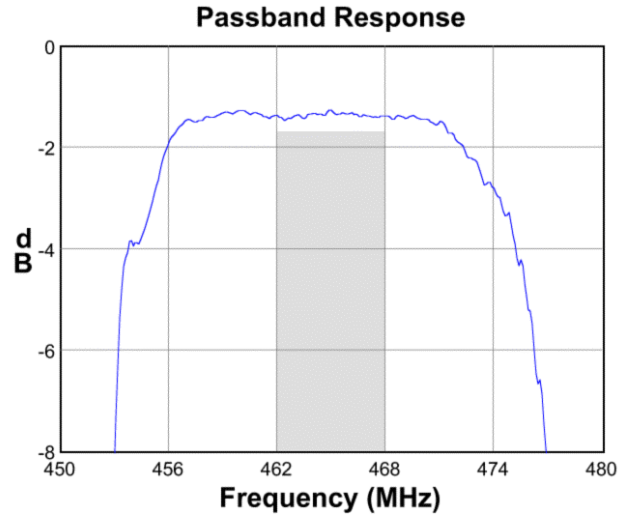
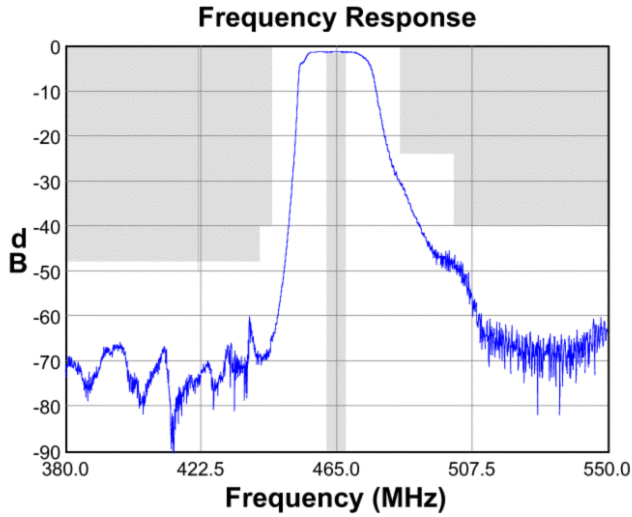
50 Ω  
Single-ended



No impedance matching  
required

**Preliminary Data Sheet**

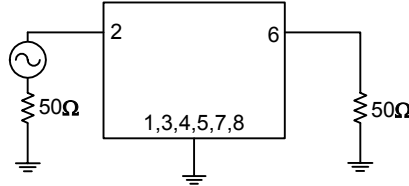
**Typical Performance (at +25°C)**



**Preliminary Data Sheet**

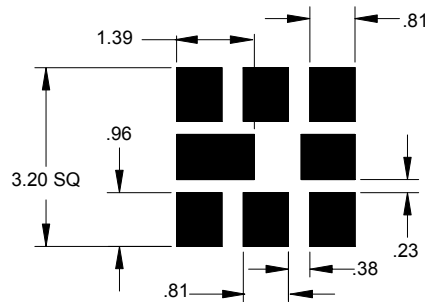
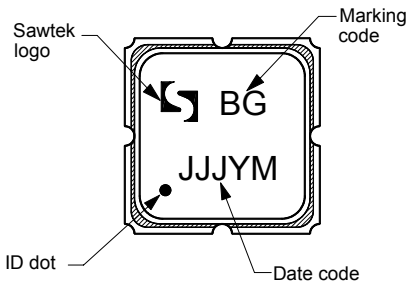
**Matching Schematics**

50 Ω  
Single-ended



No impedance matching required

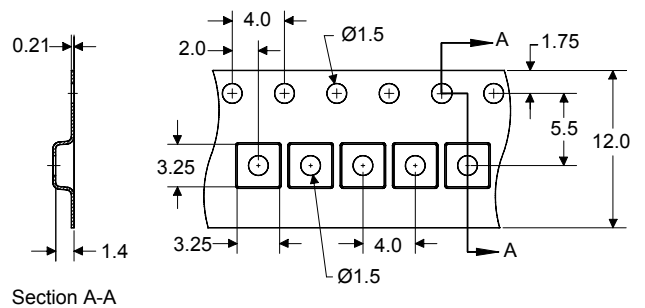
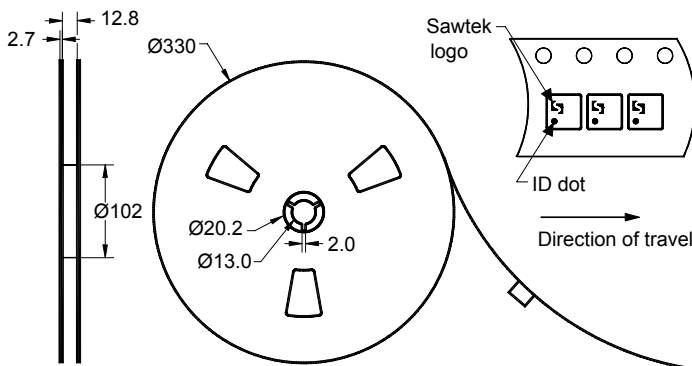
**Marking PCB Footprint**



The date code consists of: JJJ = Julian day,  
Y = last digit of year, M = manufacturing site code

This footprint represents a recommendation only  
Dimensions shown are nominal in millimeters

**Tape and Reel**



Dimensions shown are nominal in millimeters  
Packaging quantity: 5000 units/reel


# Preliminary Data Sheet

## Maximum Ratings


Parameter	Symbol	Minimum	Maximum	Unit
Operating Temperature Range	T	-40	+85	°C
Storage Temperature Range	T <sub>stg</sub>	-40	+85	°C

## Important Notes

### Warnings

- Electrostatic Sensitive Device (ESD) 
- Avoid ultrasonic exposure

### RoHS Compliance

- This product complies with EU directive 2002/95/EC (RoHS) 

### Solderability

- Compatible with JEDEC J-STD-020C **Pb**-free process, **260°C** peak reflow temperature ([see soldering profile](#))

## Links to Additional Technical Information

[PCB Layout Tips](#)

[Qualification Flowchart](#)

[Soldering Profile](#)

[S-Parameters](#)

[RoHS information](#)

[Other Technical Information](#)

Sawtek's liability is limited only to the Surface Acoustic Wave (SAW) component(s) described in this data sheet. Sawtek does not accept any liability for applications, processes, circuits or assemblies, which are implemented using any Sawtek component described in this data sheet.

## Contact Information



PO Box 609501  
 Orlando, FL 32860-9501  
 USA

Phone: +1 (407) 886-8860  
 Fax: +1 (407) 886-7061  
 Email: [custservice@sawtek.com](mailto:custservice@sawtek.com)  
 Web: [www.sawtek.com](http://www.sawtek.com)

Or contact one of our worldwide  
 Network of [sales offices](#),  
[representatives or distributors](#)

## X-ON Electronics

Largest Supplier of Electrical and Electronic Components

*Click to view similar products for [Signal Conditioning](#) category:*

*Click to view products by [Qorvo](#) manufacturer:*

Other Similar products are found below :

[MAPDCC0001](#) [MAPDCC0004](#) [PD0409J5050S2HF](#) [880157](#) [HHS-109-PIN](#) [DC1417J5005AHF](#) [AFS14A30-2185.00-T3](#) [AFS14A35-1591.50-T3](#) [DS-323-PIN](#) [B39321R801H210](#) [1A0220-3](#) [JP510S](#) [LFB212G45SG8C341](#) [LFB322G45SN1A504](#) [LFL182G45TC3B746](#) [SF2159E](#) [30057](#) [FM-104-PIN](#) [CER0813B](#) [MAPDCC0005](#) [3A325](#) [40287](#) [41180](#) [ATB3225-75032NCT](#) [BD0810N50100AHF](#) [BD2425J50200AHF](#) [C5060J5003AHF](#) [JHS-115-PIN](#) [JP503AS](#) [DC0710J5005AHF](#) [DC2327J5005AHF](#) [DC3338J5005AHF](#) [43020](#) [LFB2H2G60BB1C106](#) [LFL15869MTC1B787](#) [X3C19F1-20S](#) [XC3500P-20S](#) [10013-20](#) [SF2194E](#) [CDBLB455KCAX39-B0](#) [TGL2208-SM, EVAL](#) [RF1353C](#) [1E1305-3](#) [1F1304-3S](#) [1G1304-30](#) [B0922J7575AHF](#) [2020-6622-20](#) [10017-3](#) [TP-103-PIN](#) [BD1222J50200AHF](#)