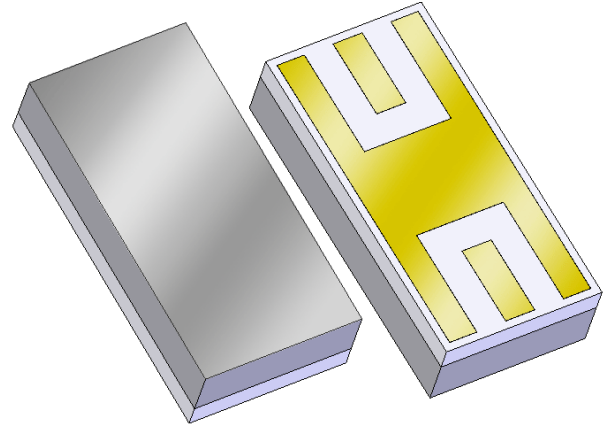


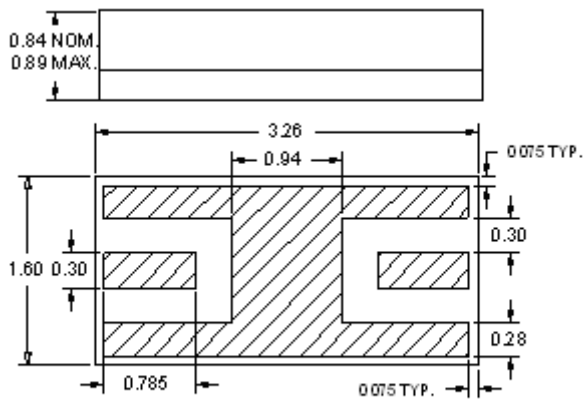
Features

- For GPS L3/4 applications
- Usable bandwidth of 38 MHz
- Single-ended operation
- Ceramic Surface Mount Package
- Hermetic



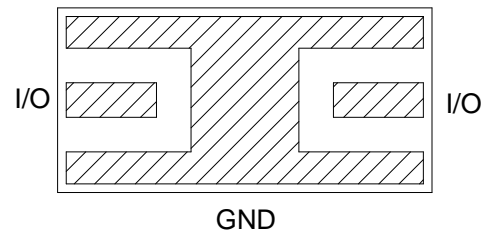
Package

Surface Mount 3.26 x 1.60 x 0.84 mm



Pin Configuration

Bottom View



Pin No.	Description
I/O	Input/Output
GND	Ground

Dimensions shown are nominal in millimeters
All tolerances are ± 0.13 mm except overall
length and width ± 0.25 mm

Overall width, length, and thickness are the only critical
dimensions. All other dimensions are for reference only.

Body: *Sapphire*

Lid: *Alumina*

Terminations: *Au* plating 0.5 - 2.5 μ m,
over a 2.0 - 6.0 μ m *Ni* plating

Electrical Specifications ⁽¹⁾

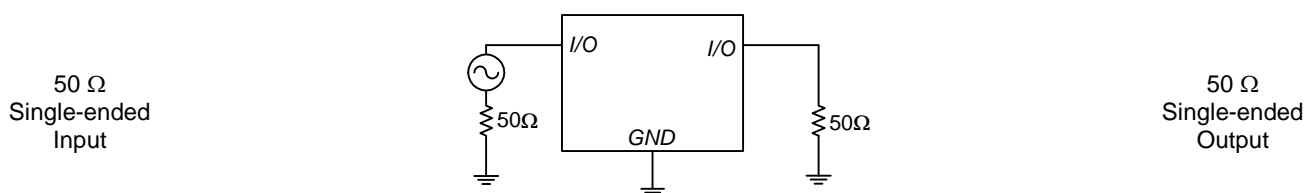
Operating Temperature Range: ⁽²⁾ -40 to +85 °C

Parameter ⁽³⁾	Minimum	Typical	Maximum	Unit
10dB Center Frequency	1375	1380	1385	MHz
Insertion Loss at Fo	-	2.75	4.0	dB
3 dB Bandwidth ⁽⁴⁾	38	40	-	MHz
40 dB Bandwidth ⁽⁴⁾	-	115	124	MHz
Amplitude Variation ⁽⁴⁾ 1370 - 1390 MHz	-	1	2	dB
Input/Output VSWR at Fo	-	1.5	2.25:1	-
Source Impedance	-	50	-	Ω
Load Impedance	-	50	-	Ω

Notes:

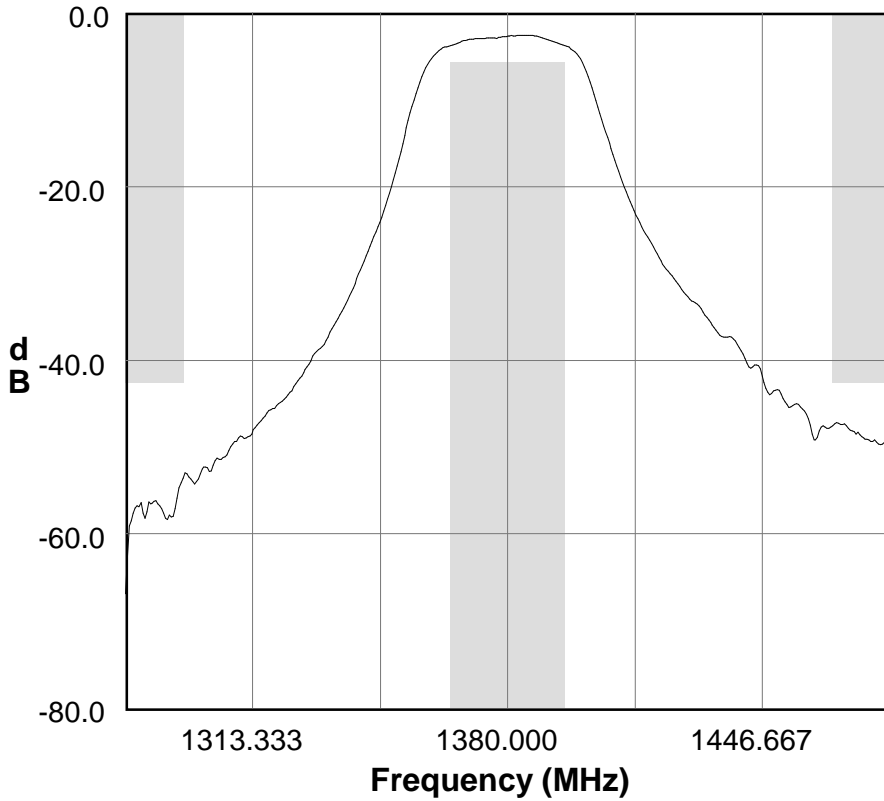
1. All specifications are based on the test circuit shown below
2. In production, devices will be tested at room temperature to a guardbanded specification to ensure electrical compliance over temperature
3. Electrical margin has been built into the design to account for the variations due to temperature drift and manufacturing tolerances
4. Referenced to the insertion loss at center frequency

Test Circuit:

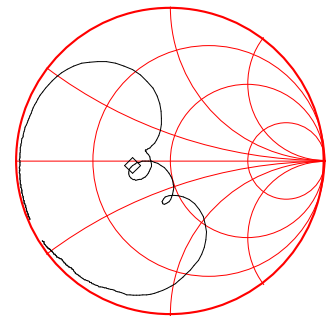


Typical Performance (at +25°C)

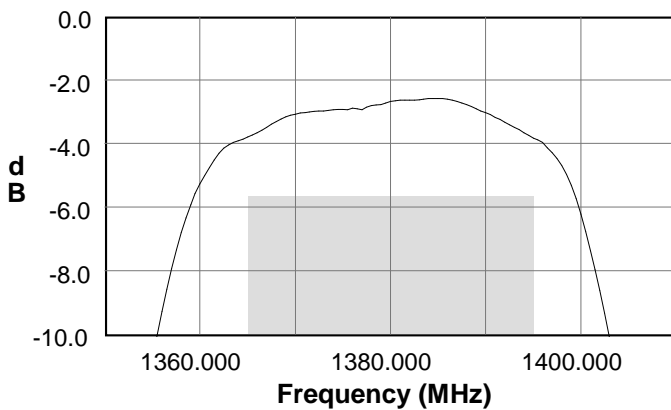
S21 Amplitude Response



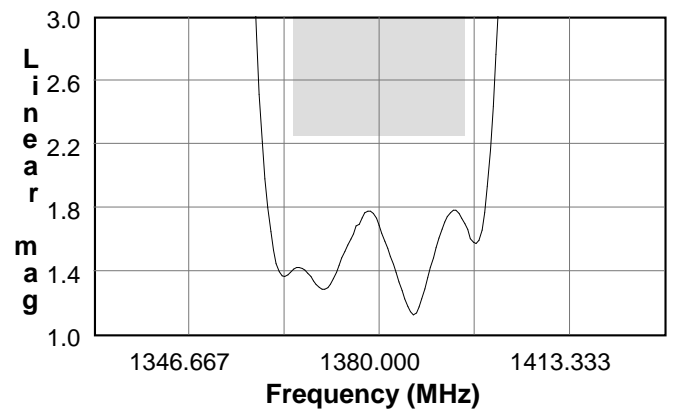
S11 Smith Chart



S21 Amplitude Response

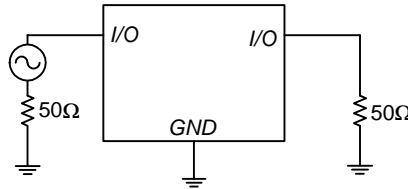


S11 VSWR



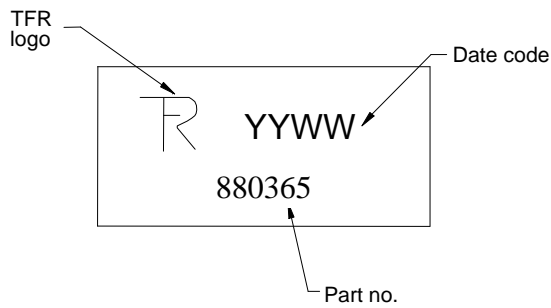
Matching Schematics

50 Ω
 Single-ended
 Input



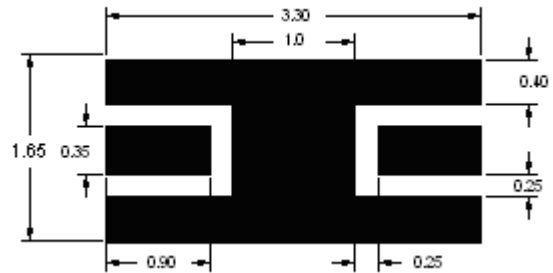
50 Ω
 Single-ended
 Output

Marking



The date code consists of: YY = last digit of year,
 WW = 2 digit week

PCB Footprint



This footprint represents a recommendation only
 Dimensions shown are nominal in millimeters

Tape and Reel

Tape and Reel available upon request
 EIA-481


Tinning available per J-STD-001

ROHS compliant (no tinning)
 DFARS compliant

Maximum Ratings

Parameter	Symbol	Minimum	Maximum	Unit
Operating Temperature Range	T	-40	+85	°C
Storage Temperature Range	T _{stg}	-55	+100	°C

Warnings

- Electrostatic Sensitive Device (ESD) 
- Avoid ultrasonic exposure

Triquint's liability is limited only to the Bulk Acoustic Wave (BAW) component(s) described in this data sheet. Triquint does not accept any liability for applications, processes, circuits or assemblies, which are implemented using any Triquint component described in this data sheet.

Contact Information

TriQuint 
 SEMICONDUCTOR
 63140 Britta St. Bldg. C
 Bend, OR 97701

Phone: +1 (972) 994-8465
 Fax: +1 (972) 994-8504
 Email: custservbend@tqs.com
 Web: www.triquint.com

Or contact one of our worldwide
 Network of [sales offices](#),
[Representatives or distributors](#)

X-ON Electronics

Largest Supplier of Electrical and Electronic Components

Click to view similar products for [Signal Conditioning](#) category:

Click to view products by [Qorvo](#) manufacturer:

Other Similar products are found below :

[MAPDCC0001](#) [MAPDCC0004](#) [PD0409J5050S2HF](#) [880157](#) [HHS-109-PIN](#) [DC1417J5005AHF](#) [AFS14A30-2185.00-T3](#) [AFS14A35-1591.50-T3](#) [DS-323-PIN](#) [B39321R801H210](#) [1A0220-3](#) [JP510S](#) [LFB212G45SG8C341](#) [LFB322G45SN1A504](#) [LFL182G45TC3B746](#) [SF2159E](#) [30057](#) [FM-104-PIN](#) [CER0813B](#) [MAPDCC0005](#) [3A325](#) [40287](#) [41180](#) [ATB3225-75032NCT](#) [BD0810N50100AHF](#) [BD2425J50200AHF](#) [C5060J5003AHF](#) [JHS-115-PIN](#) [JP503AS](#) [DC0710J5005AHF](#) [DC2327J5005AHF](#) [DC3338J5005AHF](#) [43020](#) [LFB2H2G60BB1C106](#) [LFL15869MTC1B787](#) [X3C19F1-20S](#) [XC3500P-20S](#) [10013-20](#) [SF2194E](#) [CDBLB455KCAX39-B0](#) [TGL2208-SM, EVAL](#) [RF1353C](#) [1E1305-3](#) [1F1304-3S](#) [1G1304-30](#) [B0922J7575AHF](#) [2020-6622-20](#) [10017-3](#) [TP-103-PIN](#) [BD1222J50200AHF](#)