

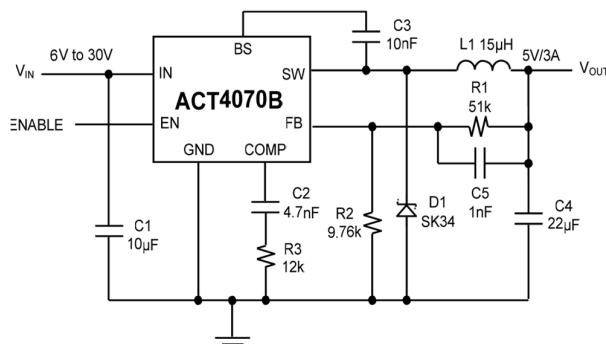
FEATURES

- 3A Output Current
- Up to 95% Efficiency
- 6V to 30V Input Range
- 100 μ A Shutdown Supply Current
- 4mA Standby Input Current
- 300kHz Switching Frequency
- Output Voltage Up to 12V
- Cycle-by-Cycle Current Limit Protection
- Thermal Shutdown Protection
- Internal Soft Start Function
- Frequency Fold Back at Short Circuit
- Stability with Wide Range of Capacitors
- Including Low ESR Ceramic Capacitors
- SOP-8/EP (Exposed Pad) Package

APPLICATIONS

- TFT LCD Monitors or Televisions and HDTV
- Portable DVD Players
- Car-Powered or Battery-Powered Equipment
- Set-Top Boxes
- Telecom Power Supplies
- DSL and Cable Modems and Routers

TYPICAL APPLICATION CIRCUIT

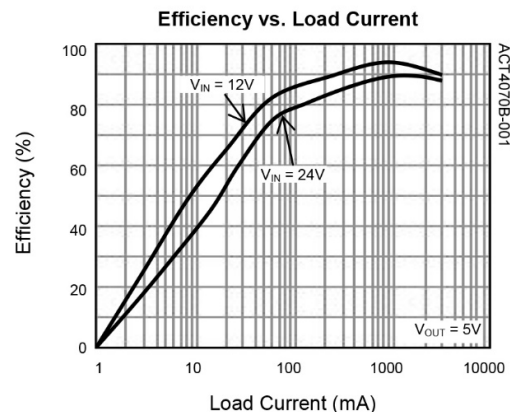


GENERAL DESCRIPTION

ACT4070B is a wide input voltage step-down DC/DC converter that provides up to 3A output current at 300kHz switching frequency. ACT4070B is a replacement part for ACT4070 with advanced features such as lower standby current and higher light load efficiency. ACT4070B can be dropped into ACT4070 socket with only feedback resistance value changed.

ACT4070B's protection features include Cycle-by-Cycle current limit, thermal shutdown, and frequency foldback at over current and short circuit. The devices are available in a SOP-8EP package and require very few external devices for operation.

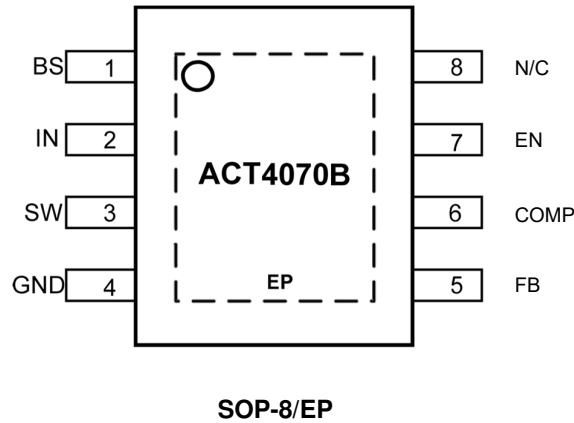
Note: ACT4070B is the replacement part for ACT4070.



ORDERING INFORMATION

| PART NUMBER | TEMPERATURE RANGE | PACKAGE | PINS | PACKING |
|--------------|-------------------|----------|------|-------------|
| ACT4070BYH-T | -40°C to 85°C | SOP-8/EP | 8 | TAPE & REEL |

PIN CONFIGURATION



PIN DESCRIPTIONS

| PIN NUMBER | NAME | DESCRIPTION |
|------------|------|---|
| 1 | BS | Bootstrap. This pin acts as the positive rail for the high-side switch's gate driver. Connect a 10nF between this pin and SW. |
| 2 | IN | Input Supply. Bypass this pin to GND with a low ESR capacitor. See <i>Input Capacitor</i> in <i>Application Information</i> section. |
| 3 | SW | Switch Output. Connect this pin to the switching end of the inductor. |
| 4 | GND | Ground. |
| 5 | FB | Feedback Input. The voltage at this pin is regulated to 0.808V. Connect to the resistor divider between output and ground to set output voltage. |
| 6 | COMP | Compensation Pin. See <i>Compensation Technique</i> in <i>Application Information</i> section. |
| 7 | EN | Enable Input. When higher than 1.6V, this pin turns the IC on. When lower than 1.5V, this pin turns the IC off. This pin has a small internal pull up current to a high level voltage when pin is not connected. |
| 8 | N/C | Not Connected. |
| EP | EP | Exposed Pad shown as dashed box. The exposed thermal pad should be connected to board ground plane and pin 4. The ground plane should include a large exposed copper pad under the package for thermal dissipation (see package out-line). The leads and exposed pad should be flush with the board, without offset from the board surface. |

ABSOLUTE MAXIMUM RATINGS^①

| PARAMETER | VALUE | UNIT |
|--|------------------------|------|
| IN to GND | -0.3 to + 34 | V |
| EN to GND | -0.3 to $V_{IN} + 0.3$ | V |
| SW to GND | -1 to $V_{IN} + 1$ | V |
| BS to SW | -0.3 to + 7 | V |
| FB, COMP to GND | -0.3 to 6 | V |
| Continuous SW Current | Internally limited | A |
| Junction to Ambient Thermal Resistance (θ_{JA}) | 46 | °C/W |
| Maximum Power Dissipation | 1.8 | W |
| Operating Junction Temperature | -40 to 150 | °C |
| Storage Temperature | -55 to 150 | °C |
| Lead Temperature (Soldering, 10 sec) | 300 | °C |

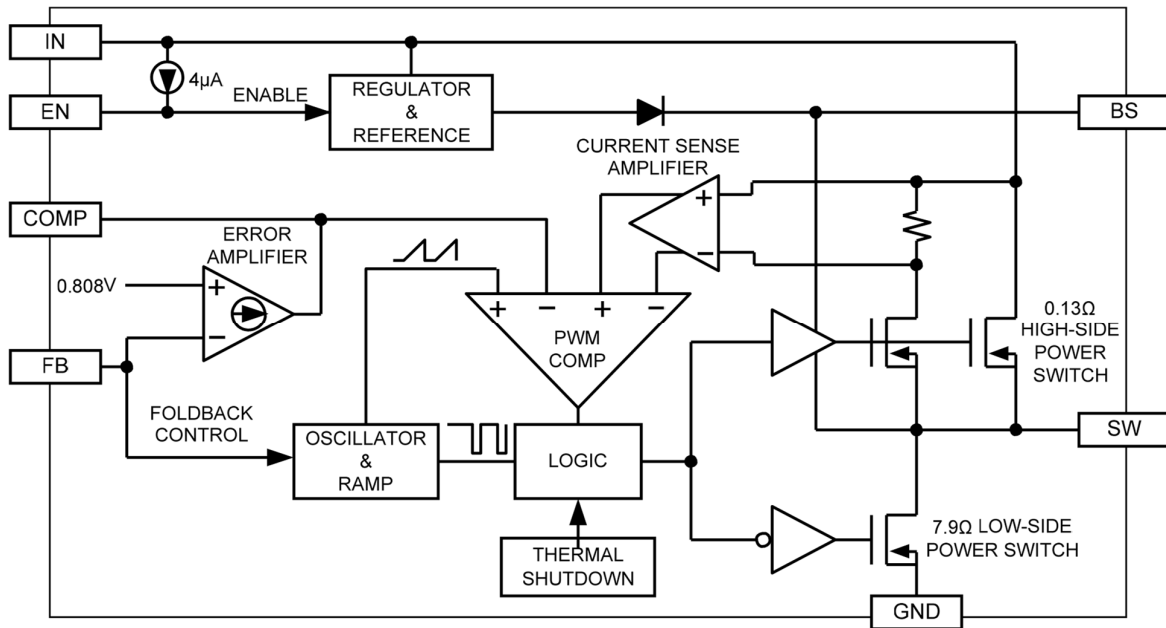
①: Do not exceed these limits to prevent damage to the device. Exposure to absolute maximum rating conditions for long periods may affect device reliability.

ELECTRICAL CHARACTERISTICS

($V_{IN} = 12V$, $T_J = 25^\circ C$, unless otherwise specified.)

| PARAMETER | SYMBOL | TEST CONDITIONS | MIN | TYP | MAX | UNIT |
|--|------------|---|-------|-------|-------|------------|
| Input Voltage | V_{IN} | $V_{OUT} = 2.5V$, $I_{LOAD} = 0A$ to $3A$ | 6 | | 30 | V |
| V_{IN} UVLO Turn-on Voltage | | Input Voltage Rising | | 5.5 | | V |
| Feedback Voltage | V_{FB} | | 0.792 | 0.808 | 0.824 | V |
| High-Side Switch On Resistance | R_{ONH} | | | 130 | | m Ω |
| Low-Side Switch On Resistance | R_{ONL} | | | 7.9 | | Ω |
| SW Leakage | | $V_{EN} = 0$, $V_{IN} = 12V$, $V_{SW} = 0V$ | | 1 | 10 | μA |
| High-Side Switch Peak Current Limit | I_{LIM} | Duty = 50% | | 3.7 | | A |
| COMP to Current Limit Transconductance | G_{COMP} | $\Delta I_{LOAD}/\Delta I_{COMP}$ | | 5.25 | | A/V |
| Error Amplifier Transconductance | G_{EA} | $\Delta I_{COMP} = \pm 10\mu A$ | | 650 | | $\mu A/V$ |
| Error Amplifier DC Gain | A_{VEA} | | | 4000 | | V/V |
| Switching Frequency | f_{SW} | | 250 | 300 | 330 | kHz |
| Short Circuit Switching Frequency | | $V_{FB} = 0V$ | | 44 | | kHz |
| Maximum Duty Cycle | D_{MAX} | | | 88 | | % |
| Minimum on Time | | | | 200 | | ns |
| Enable Threshold Voltage | | Hysteresis = 0.1V | 1.47 | 1.6 | 1.73 | V |
| Enable Pull-Up Current | | Pin pulled up to V_{IN} when left unconnected | | 4 | | μA |
| Supply Current in Shutdown | | $V_{EN} = 0$ | | 75 | 115 | μA |
| IC Supply Current in Operation | | $V_{FB} = 1.2V$, not switching | | 0.675 | 1 | mA |
| Thermal Shutdown Temperature | | Hysteresis = 20°C | | 150 | | °C |

FUNCTIONAL BLOCK DIAGRAM



FUNCTIONAL DESCRIPTION

As seen in the *Functional Block Diagram*, the ACT4070B is a current mode pulse width modulation (PWM) converter. The converter operates as follows:

A switching cycle starts when the rising edge of the Oscillator clock output causes the High-Side Power Switch to turn on and the Low-Side Power Switch to turn off. With the SW side of the inductor now connected to IN, the inductor current ramps up to store energy in the its magnetic field. The inductor current level is measured by the Current Sense Amplifier and added to the Oscillator ramp signal. If the resulting summation is higher than the COMP voltage, the output of the PWM Comparator goes high. When this happens or when Oscillator clock output goes low, the High-Side Power Switch turns off and the Low-Side Power Switch turns on. At this point, the SW side of the inductor swings to a diode voltage below ground, causing the inductor current to decrease and magnetic energy to be transferred to output. This state continues until the cycle starts again.

The High-Side Power Switch is driven by logic using BS bootstrap pin as the positive rail. This pin is charged to $V_{sw} + 6V$ when the Low-Side Power Switch turns on.

The COMP voltage is the integration of the error between FB input and the internal 0.808V reference. If

FB is lower than the reference voltage, COMP tends to go higher to increase current to the output.

The Oscillator normally switches at 300kHz. However, if FB voltage is less than 0.6V, then the switching frequency decreases until it reaches a typical value of 36kHz at $V_{FB} = 0V$.

Shutdown Control

The ACT4070B has an enable input EN for turning the IC on or off. When EN is less than 1.5V, the IC is in 100µA low current shutdown mode and output is discharged through the Low-Side Power Switch. When EN is higher than 1.6V, the IC is in normal operation mode. EN is internally pulled up with a 4µA current source and can be left unconnected for always-on operation.

Thermal Shutdown

The ACT4070B automatically turns off when its junction temperature exceeds 160°C and then re-starts once the temperature falls to 150°C.

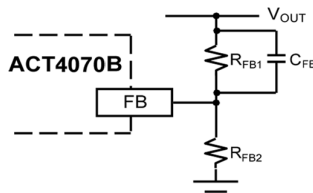
APPLICATIONS INFORMATION

Output Voltage Setting

Figure 1 shows the connections for setting the output voltage. Select the proper ratio of the two feedback resistors R_{FB1} and R_{FB2} based on the output voltage. Adding a capacitor in parallel with R_{FB1} helps the system stability. Typically, $R_{FB2} \approx 10k\Omega$ and determine R_{FB1} from the output voltage:

$$R_{FB1} = R_{FB2} \left(\frac{V_{OUT}}{0.808V} - 1 \right) \quad (1)$$

Figure 1:
Output Voltage Setting



Inductor Selection

The inductor maintains a continuous current to the output load. This inductor current has a ripple that is dependent on the inductance value: higher inductance reduces the peak-to-peak ripple current. The trade off for high inductance value is the increase in inductor core size and series resistance, and the reduction in current handling capability. In general, select an inductance value L based on ripple current requirement:

$$L = \frac{V_{OUT} \times (V_{IN} - V_{OUT})}{V_{IN} f_{SW} I_{OUTMAX} K_{RIPPLE}} \quad (2)$$

where V_{IN} is the input voltage, V_{OUT} is the output voltage, f_{SW} is the switching frequency, I_{OUTMAX} is the maximum output current, and K_{RIPPLE} is the ripple factor. Typically, choose $K_{RIPPLE} =$ between 20% and 30% to correspond to the peak-to-peak ripple current being a percentage of the maximum output current.

With this inductor value (Table 1), the peak inductor current is $I_{OUT} (1 + K_{RIPPLE} / 2)$. Make sure that this peak inductor current is less than the 5A current limit. Finally, select the inductor core size so that it does not saturate at 5A.

Table 1.
Typical Inductor Values

| V_{OUT} | 1.5V | 1.8V | 2.5V | 3.3V | 5V |
|-----------|-------------|-------------|-------------|------------|------------|
| L | 6.8 μ H | 6.8 μ H | 8.5 μ H | 15 μ H | 15 μ H |

Input Capacitor

The input capacitor needs to be carefully selected to maintain sufficiently low ripple at the supply input of the converter. A low ESR capacitor is highly recommended. Since large current flows in and out of this capacitor during switching, its ESR also affects efficiency.

The input capacitance needs to be higher than 10 μ F. The best choice is the ceramic type; however, low ESR tantalum or electrolytic types may also be used provided that the RMS ripple current rating is higher than 50% of the output current. The input capacitor should be placed close to the IN and G pins of the IC, with shortest possible traces. In the case of tantalum or electrolytic types, they can be further away if a small parallel 0.1 μ F ceramic capacitor is placed right next to the IC.

Output Capacitor

The output capacitor also needs to have low ESR to keep low output voltage ripple. The output ripple voltage is:

$$V_{RIPPLE} = I_{OUTMAX} \times K_{RIPPLE} \left(R_{ESR} + \frac{1}{8 \times f_{SW} \times C_{OUT}} \right) \quad (3)$$

where I_{OUTMAX} is the maximum output current, K_{RIPPLE} is the ripple factor, R_{ESR} is the ESR resistance of the output capacitor, f_{SW} is the switching frequency, L in the inductor value, C_{OUT} is the output capacitance. In the case of ceramic output capacitors, R_{ESR} is very small and does not contribute to the ripple. Therefore, a lower capacitance value can be used for ceramic type. In the case of tantalum or electrolytic type, the ripple is dominated by R_{ESR} multiplied by the ripple current. In that case, the output capacitor is chosen to have sufficiently low ESR.

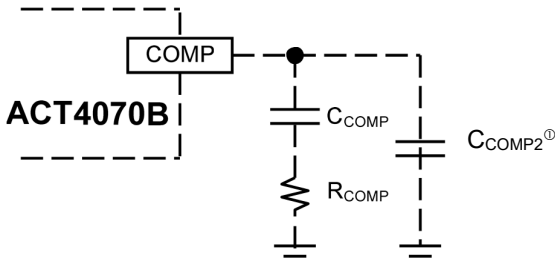
For ceramic output type, typically choose a capacitance of about 22 μ F. For tantalum or electrolytic type, choose a capacitor with less than 50m Ω ESR.

Rectifier Diode

Use a Schottky diode as the rectifier to conduct current when the High-Side Power Switch is off. The Schottky diode must have current rating higher than the maximum output current and the reverse voltage rating higher than the maximum input voltage.

Stability Compensation

Figure 2: Stability Compensation



①: C_{COMP2} is needed only for high ESR output capacitors

The feedback system of the IC is stabilized by the components at COMP pin, as shown in Figure 2. The DC loop gain of the system is determined by the following equation:

$$A_{VDC} = \frac{0.808 V}{I_{OUT}} A_{VEA} G_{COMP} \quad (4)$$

The dominant pole P1 is due to C_{COMP}:

$$f_{P1} = \frac{G_{EA}}{2\pi A_{VEA} C_{COMP}} \quad (5)$$

The second pole P2 is the output pole:

$$f_{P2} = \frac{I_{OUT}}{2\pi V_{OUT} C_{OUT}} \quad (6)$$

The first zero Z1 is due to R_{COMP} and C_{COMP}:

$$f_{Z1} = \frac{1}{2\pi R_{COMP} C_{COMP}} \quad (7)$$

And finally, the third pole is due to R_{COMP} and C_{COMP2} (if C_{COMP2} is used):

$$f_{P3} = \frac{1}{2\pi R_{COMP} C_{COMP2}} \quad (8)$$

Follow the following steps to compensate the IC:

STEP 1. Set the cross over frequency at 1/10 of the switching frequency via R_{COMP}:

$$R_{COMP} = \frac{2\pi V_{OUT} C_{OUT} f_{SW}}{10 G_{EA} G_{COMP} \times 0.808 V} \quad (9)$$

$$= 5.12 \times 10^7 V_{OUT} C_{OUT} (\Omega)$$

but limit R_{COMP} to 15kΩ maximum.

STEP 2. Set the zero f_{Z1} at 1/4 of the cross over frequency. If R_{COMP} is less than 15kΩ, the equation for C_{COMP} is:

$$C_{COMP} = \frac{2.83 \times 10^{-5}}{R_{COMP}} (F) \quad (10)$$

If R_{COMP} is limited to 15kΩ, then the actual cross over frequency is 4.8/ (V_{OUT}C_{OUT}). Therefore:

$$C_{COMP} = 6.45 \times 10^{-6} V_{OUT} C_{OUT} (F) \quad (11)$$

STEP 3. If the output capacitor's ESR is high enough to cause a zero at lower than 4 times the cross over frequency, an additional compensation capacitor C_{COMP2} is required. The condition for using C_{COMP2} is

$$R_{ESROUT} \geq \text{Min} \left(\frac{1.77 \times 10^{-6}}{C_{OUT}}, 0.006 V_{OUT} \right) (\Omega) \quad (12)$$

And the proper value for C_{COMP2} is:

$$C_{COMP2} = \frac{C_{OUT} R_{ESROUT}}{R_{COMP}} \quad (13)$$

Though C_{COMP2} is unnecessary when the output capacitor has sufficiently low ESR, a small value C_{COMP2} such as 220pF may improve stability against PCB layout parasitic effects.

Table 2 shows some calculated results based on the compensation method above

Table 2: Typical Compensation for Different Output voltages and Output Capacitors

| V _{OUT} | C _{OUT} | R _{COMP} | C _{COMP} | C _{COMP2} ① |
|------------------|------------------|-------------------|-------------------|----------------------|
| 1.8V | 22μF Ceramic | 4kΩ | 3.3nF | 220pF |
| 2.5V | 22μF Ceramic | 5.6kΩ | 3.3nF | 220pF |
| 5V | 22μF Ceramic | 12kΩ | 1.5nF | 220pF |
| 1.8V | 100μF SP Cap | 15kΩ | 1.5nF | 220pF |
| 2.5V | 100μF SP Cap | 15kΩ | 2.2nF | 220pF |
| 5V | 100μF SP Cap | 15kΩ | 4.7nF | 220pF |

①: C_{COMP2} is needed only for high ESR output capacitors

Figure 3 shows a sample ACT4070B application but limit R_{COMP} to 15kΩ maximum circuit generating a 2.5V/3A output.

Figure 3:
ACT4070B 5V/3A Output Application[®]

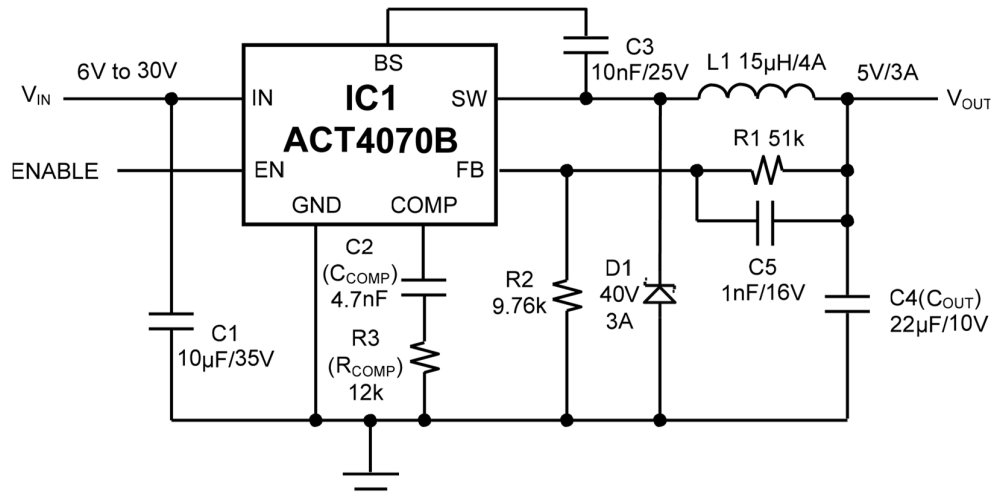
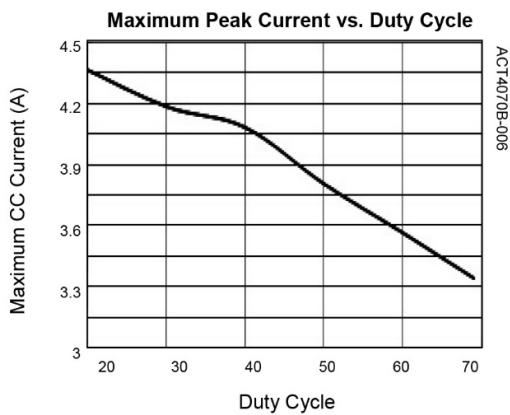
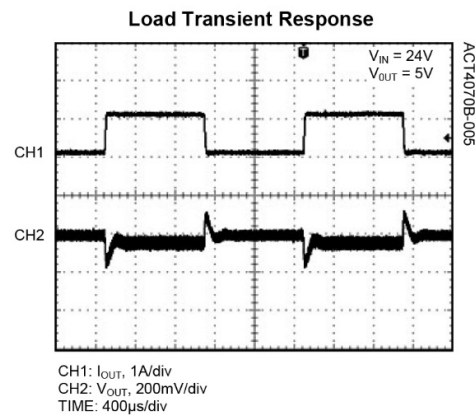
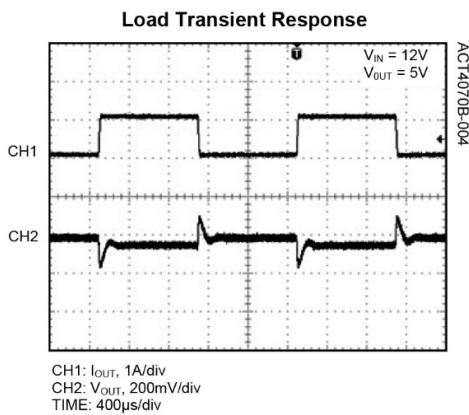
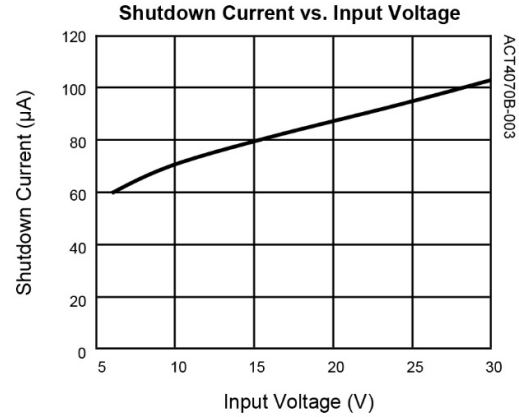
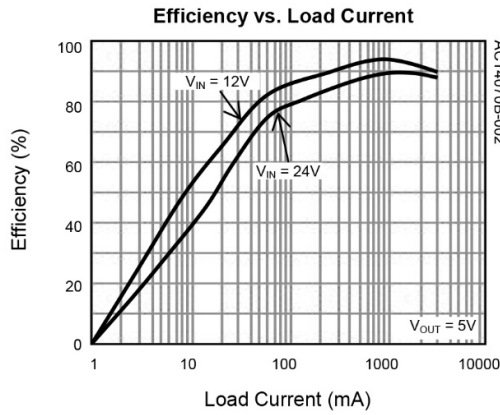


Table 3:
BOM List for 5V/2A Car Charger

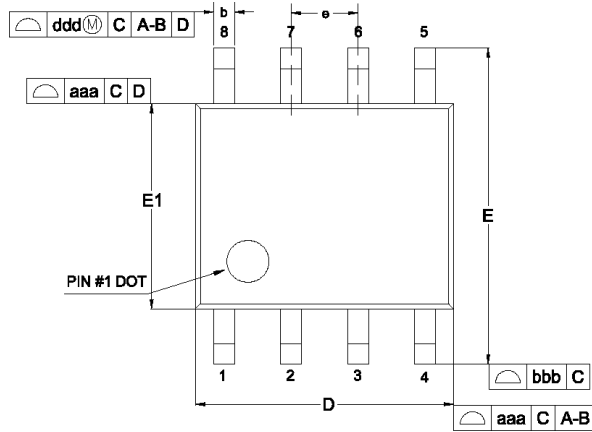
| ITEM | REFERENCE | DESCRIPTION | MANUFACTURER | QTY |
|------|-----------|--|--------------|-----|
| 1 | U1 | IC, ACT4070B, SOP-8EP | Active-Semi | 1 |
| 2 | C1 | Capacitor, Ceramic, 10µF/50V, 1206, SMD | Murata, TDK | 1 |
| 3 | C2 | Capacitor, Ceramic, 4.7nF/25V, 0603, SMD | Murata, TDK | 1 |
| 4 | C3 | Capacitor, Ceramic, 10nF/25V, 0603, SMD | Murata, TDK | 1 |
| 5 | C4 | Capacitor, Ceramic, 22µF/10V, 0805, SMD | Murata, TDK | 1 |
| 6 | C5 | Capacitor, Ceramic, 1nF/16V, 0603, SMD | Murata, TDK | 1 |
| 7 | L1 | Inductor, 15µH, 4A, 20%, SMD | Sunlord | 1 |
| 8 | D1 | Diode, Schottky, 40V/3A, SK34 | Murata, TDK | 1 |
| 9 | R1 | Chip Resistor, 51kΩ, 0603, 1% | Diodes | 1 |
| 10 | R2 | Chip Resistor, 9.76kΩ, 0603, 1% | Murata, TDK | 1 |
| 11 | R3 | Chip Resistor, 12kΩ, 0603, 5% | Murata, TDK | 1 |

TYPICAL PERFORMANCE CHARACTERISTICS

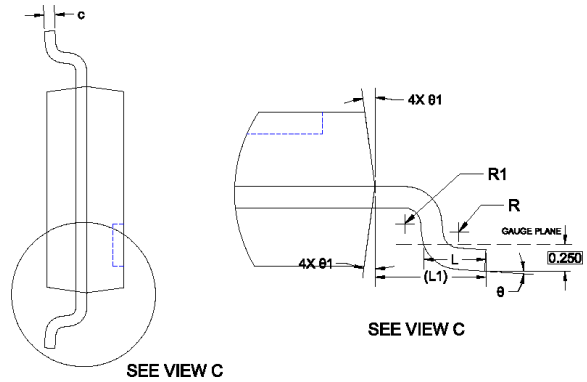
(Circuit of Figure 3, unless otherwise specified.)



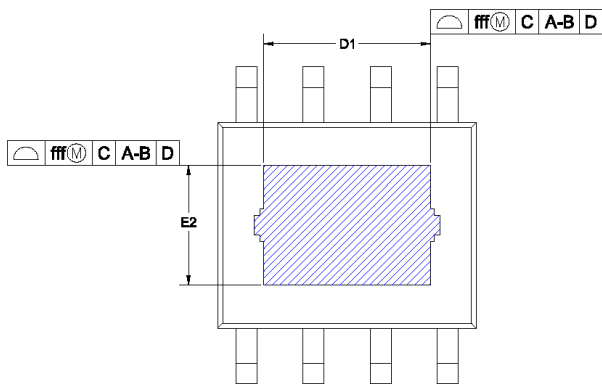
PACKAGE OUTLINE AND DIMENSIONS



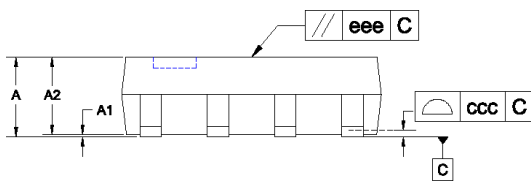
Top View



Side View



Bottom View



Side View

| Dimensional Ref. | | | |
|-----------------------|-----------|------|-------|
| REF. | Min. | Nom. | Max. |
| A | 1.300 | -- | 1.700 |
| A1 | 0.000 | -- | 0.100 |
| A2 | 1.350 | -- | 1.550 |
| b | 0.330 | -- | 0.510 |
| c | 0.170 | -- | 0.250 |
| D | 4.900BSC | | |
| E | 6.000BSC | | |
| E1 | 3.900BSC | | |
| D1 | 3.150BSC | | |
| E2 | 2.260BSC | | |
| e | 1.270 BSC | | |
| L | 0.400 | -- | 1.270 |
| L1 | 1.050REF. | | |
| R | 0.070 | -- | -- |
| R1 | 0.070 | -- | -- |
| θ | 0° | -- | 8° |
| θ1 | 5° | -- | 15° |
| Tol. of Form&Position | | | |
| aaa | 0.10 | | |
| bbb | 0.20 | | |
| ccc | 0.10 | | |
| ddd | 0.25 | | |
| eee | 0.10 | | |
| fff | 0.15 | | |

Notes

1. ALL DIMENSIONS AND TOLERANCES CONFORM TO ASME Y14.5-2009.
2. ALL DIMENSIONS ARE IN MILLIMETERS.
3. UNILATERAL COPLANARITY ZONE APPLIES TO THE EXPOSED PAD AS WELL AS THE TERMINALS.

Product Compliance

This part complies with RoHS directive 2011/65/EU as amended by (EU) 2015/863.

This part also has the following attributes:

- Lead Free
- Halogen Free (Chlorine, Bromine)



Contact Information

For the latest specifications, additional product information, worldwide sales and distribution locations:

Web: www.qorvo.com

Tel: 1-844-890-8163

Email: customer.support@qorvo.com

For technical questions and application information:

Email: appsupport@qorvo.com

Important Notice

The information contained herein is believed to be reliable; however, Qorvo makes no warranties regarding the information contained herein and assumes no responsibility or liability whatsoever for the use of the information contained herein. All information contained herein is subject to change without notice. Customers should obtain and verify the latest relevant information before placing orders for Qorvo products. The information contained herein or any use of such information does not grant, explicitly or implicitly, to any party any patent rights, licenses, or any other intellectual property rights, whether with regard to such information itself or anything described by such information. **THIS INFORMATION DOES NOT CONSTITUTE A WARRANTY WITH RESPECT TO THE PRODUCTS DESCRIBED HEREIN, AND QORVO HEREBY DISCLAIMS ANY AND ALL WARRANTIES WITH RESPECT TO SUCH PRODUCTS WHETHER EXPRESS OR IMPLIED BY LAW, COURSE OF DEALING, COURSE OF PERFORMANCE, USAGE OF TRADE OR OTHERWISE, INCLUDING THE IMPLIED WARRANTIES OF MERCHANTABILITY AND FITNESS FOR A PARTICULAR PURPOSE.**

Without limiting the generality of the foregoing, Qorvo products are not warranted or authorized for use as critical components in medical, life-saving, or life-sustaining applications, or other applications where a failure would reasonably be expected to cause severe personal injury or death.

Copyright 2019 © Qorvo, Inc. | Qorvo® and Active-Semi® are trademarks of Qorvo, Inc.

X-ON Electronics

Largest Supplier of Electrical and Electronic Components

Click to view similar products for [Switching Voltage Regulators](#) category:

Click to view products by [Qorvo](#) manufacturer:

Other Similar products are found below :

[FAN53610AUC33X](#) [FAN53611AUC123X](#) [FAN48610BUC33X](#) [FAN48610BUC45X](#) [FAN48617UC50X](#) [R3](#) [430464BB](#) [KE177614](#)
[FAN53611AUC12X](#) [MAX809TTR](#) [NCV891234MW50R2G](#) [NCP81103MNTXG](#) [NCP81203PMNTXG](#) [NCP81208MNTXG](#)
[NCP81109GMNTXG](#) [SCY1751FCCT1G](#) [NCP81109JMNTXG](#) [AP3409ADNTR-G1](#) [NCP81241MNTXG](#) [LTM8064IY](#) [LT8315EFE#TRPBF](#)
[LTM4664EY#PBF](#) [LTM4668AIY#PBF](#) [NCV1077CSTBT3G](#) [XCL207A123CR-G](#) [MPM54304GMN-0002](#) [MPM54304GMN-0004](#)
[MPM54304GMN-0003](#) [AP62300Z6-7](#) [MP8757GL-P](#) [MIC23356YFT-TR](#) [LD8116CGL](#) [HG2269M/TR](#) [OB2269](#) [XD3526](#) [U6215A](#) [U6215B](#)
[U6620S](#) [LTC3412IFE](#) [LT1425IS](#) [MAX25203BATJA/VY+](#) [MAX77874CEWM+](#) [XC9236D08CER-G](#) [MP3416GJ-P](#) [BD9S201NUX-CE2](#)
[MP5461GC-Z](#) [MPQ4415AGQB-Z](#) [MPQ4590GS-Z](#) [MAX38640BENT18+T](#) [MAX77511AEWB+](#)