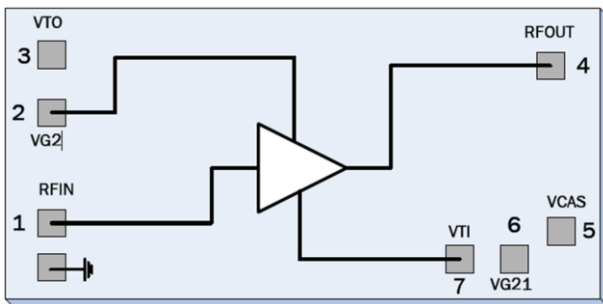


SDA-2000

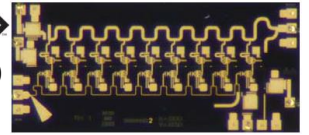
GaAs Distributed Amplifier

RFMD's SDA-2000 is a directly coupled (DC) GaAs microwave monolithic integrated circuit (MMIC) distributed driver amplifier die designed to support a wide array of high frequency commercial, military, and space applications. They are ideal for wideband amplifier gain blocks, modulators, clock drivers, broadband automated test equipment (ATE), military, and aerospace applications.



Functional Block Diagram

rfmd **SDA-2000**



Package: Die, 3.1mm x 1.45mm x 0.102mm

Features

- DC to 22GHz Operation
- Output Voltage to $8V_{PP}$
- Gain = 12dB Typical
- Noise Figure = 5.5dB Typical
- 410mA Total Current

Applications

- Drive for Single-Ended (SE) MZM
- NRZ, DPSK, ODB, RZ
- Clock Driver for RZ and CS Pulse Carver
- Broadband ATE
- Military
- Aerospace

Ordering Information

SDA-2000 GaAs Distributed Amplifier, GeIPak, 10 pieces or more

SDA-2000SB Sample Bag, GaAs Distributed Amplifier, GeIPak, 2 pieces

Absolute Maximum Ratings

Parameter	Rating	Unit
Drain Bias Voltage (V_{DD})	+9.0	V_{DC}
Gate Bias Voltage (V_{T1})	-2 to +1	V_{DC}
Gate Bias Voltage (V_{G2})	$(V_{DD}-8.0)$ to V_{DD}	V_{DC}
RF Input Power ($V_{DD} = +7.0V_{DC}$)		dBm
Operating Junction Temperature (T_J)	+175	$^{\circ}C$
Continuous Power Dissipation ($T = +85^{\circ}C$)	5	W
Thermal Resistance (Pad to Die Bottom)	17	$^{\circ}C/W$
Storage Temperature	-40 to +150	$^{\circ}C$
Operating Temperature	-40 to +85	$^{\circ}C$
ESD JESD22-A114 Human Body Model (HBM)	Class 0 (All Pads)	



Caution! ESD sensitive device.



RFMD Green: RoHS compliant per EU Directive 2011/65/EU, halogen free per IEC 61249-2-21, <1000ppm each of antimony trioxide in polymeric materials and red phosphorus as a flame retardant, and <2% antimony solder.

Exceeding any one or a combination of the Absolute Maximum Rating conditions may cause permanent damage to the device. Extended application of Absolute Maximum Rating conditions to the device may reduce device reliability. Specified typical performance or functional operation of the device under Absolute Maximum Rating conditions is not implied.

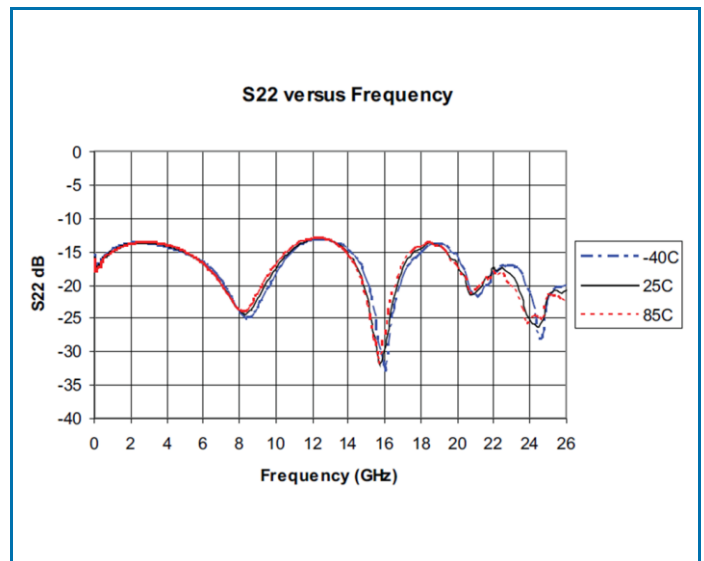
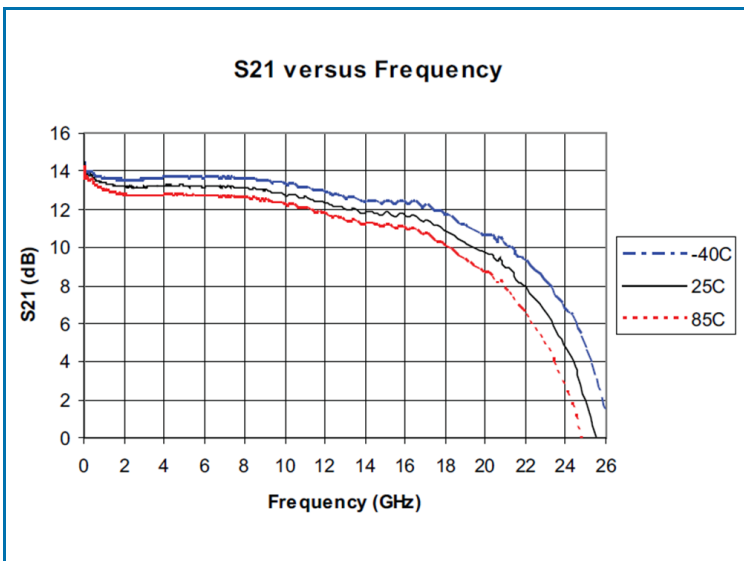
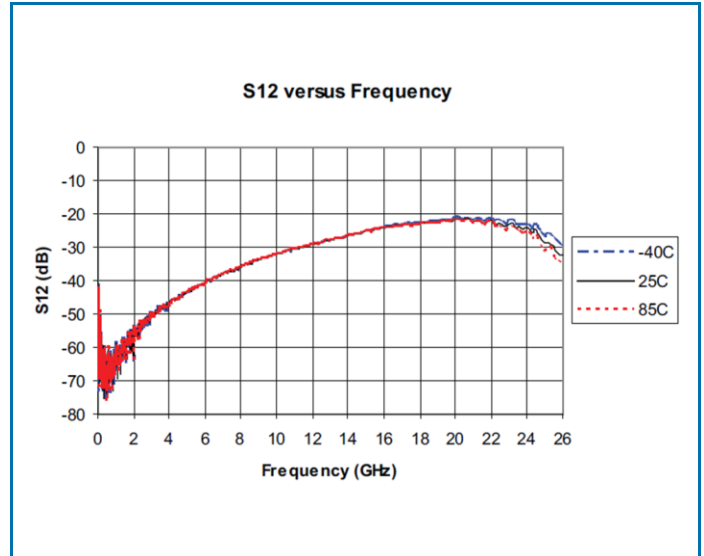
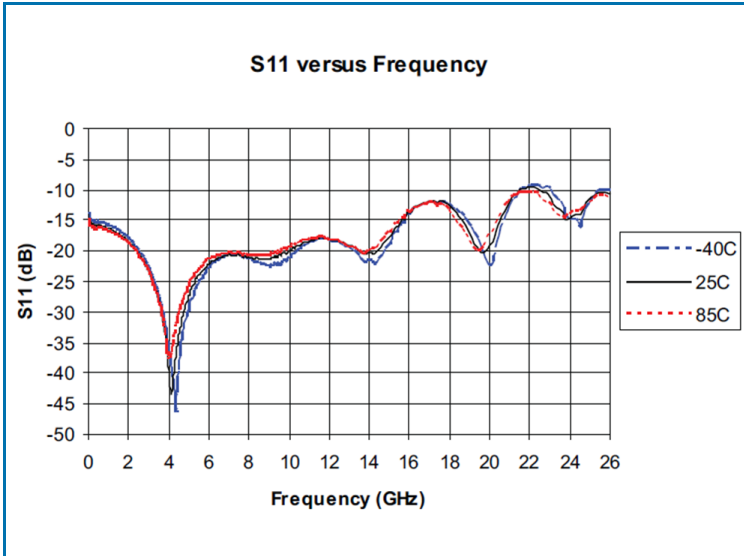
Nominal Operating Parameters

Parameter	Specification			Unit	Condition
	Min	Typ	Max		
General Performance					$T_A = +25^{\circ}C$, $V_{DD} = +8V$, $V_{G2} = +3.5V_{DC}$, $I_{DD} = 410mA^*$
Operating Frequency	DC		22	GHz	3dB BW
Gain		12		dB	10GHz
Output Voltage		8		V_{P-P}	
OIP3 at Mid-Band		38		dBm	10GHz
P1dB at Mid-Band		24		dBm	10GHz
Noise Figure at Mid-Band		6.0		dB	10GHz
Input Return Loss		20		dB	
Output Return Loss		17.5			
Supply Current		410		mA	
Supply Voltage		8.0		V_{DC}	

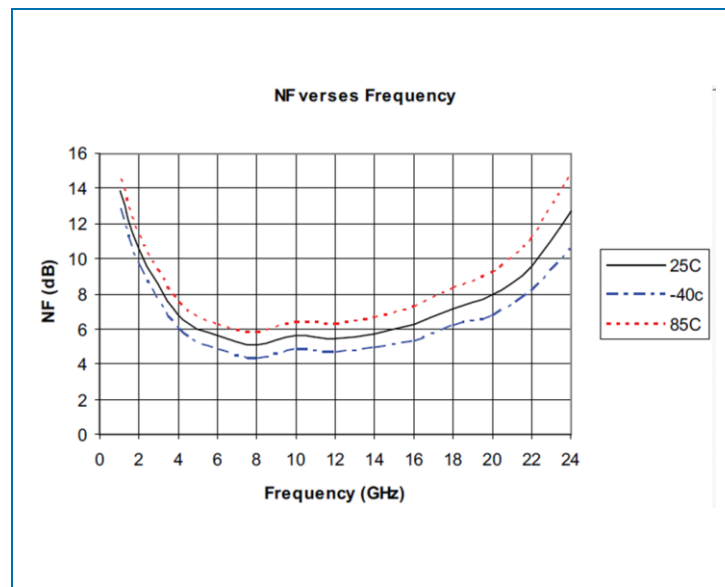
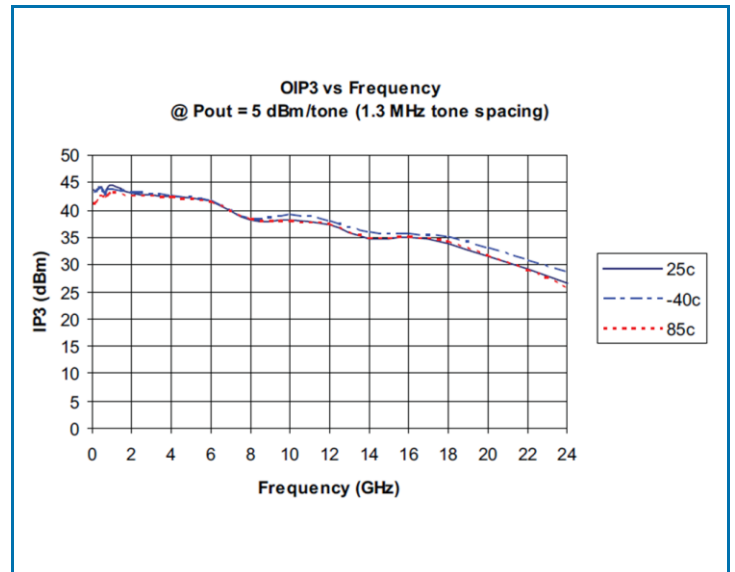
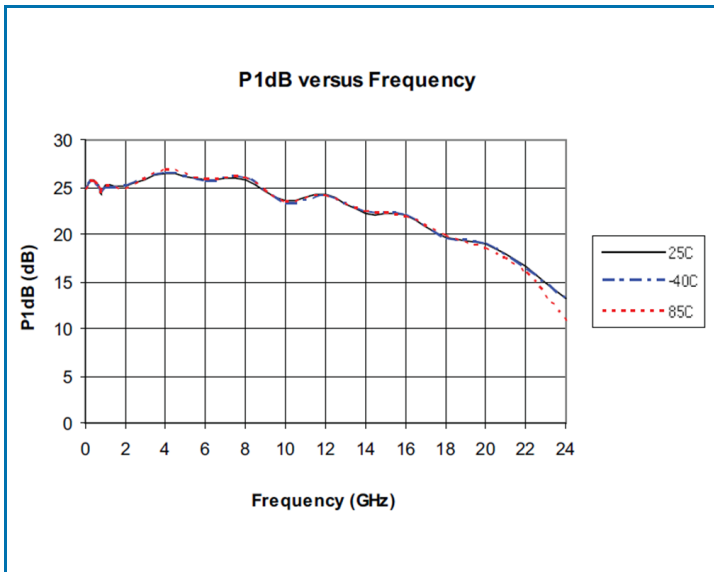
*Adjust VTI between $-2.0V_{DC}$ to $0V_{DC}$ to achieve $I_{DD} = 410mA$ typical.

Typical Performance: $V_{DD} = 5.0V$, $V_{G2} = 2.2V$

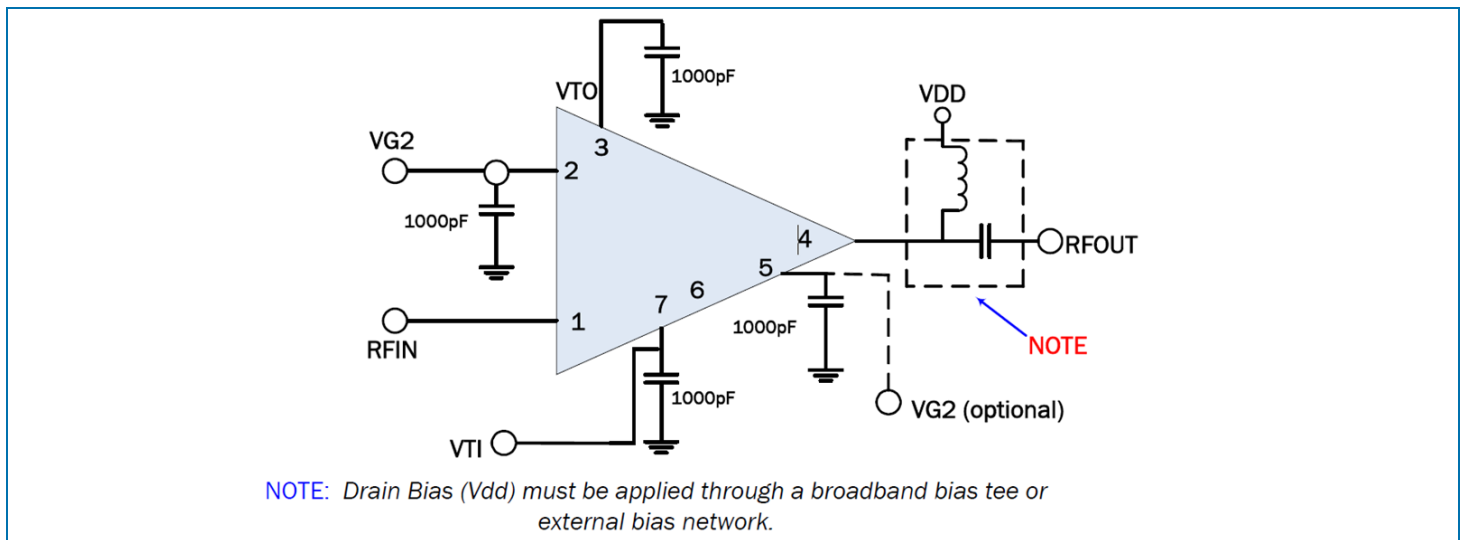
(See section at the end of the data sheet for measurement comments)



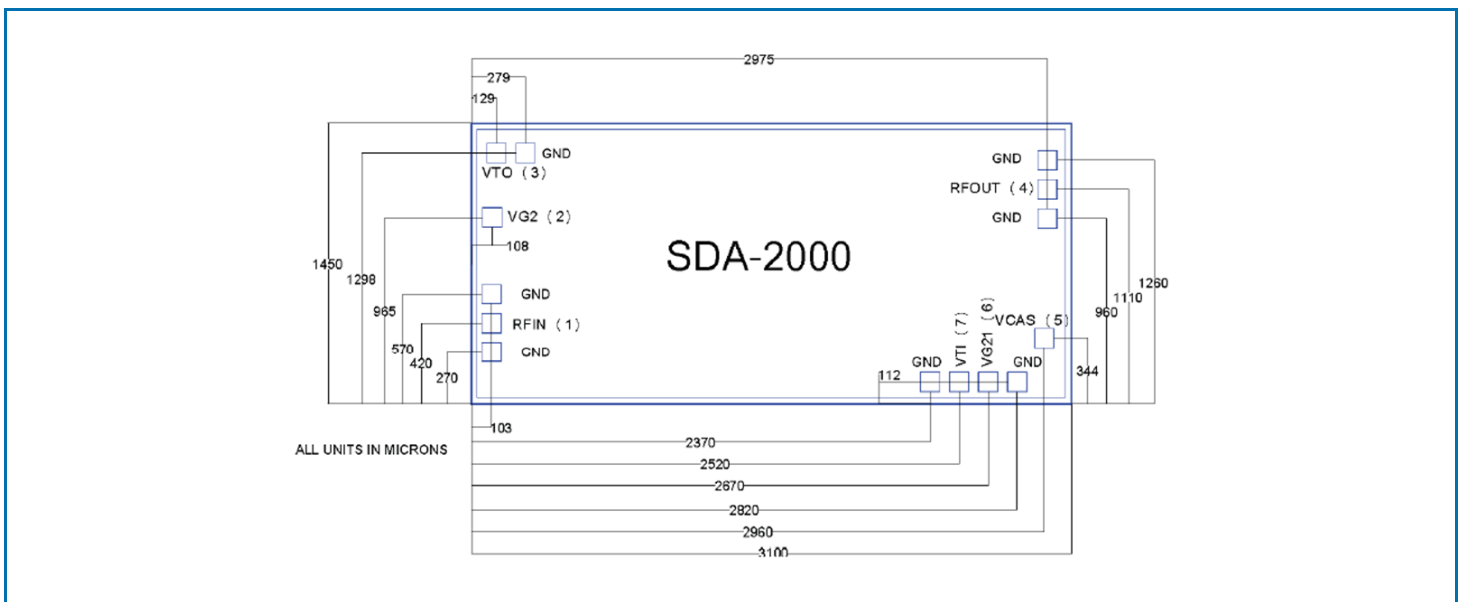
Typical Performance (Continued)



Application Schematic



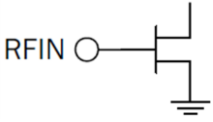
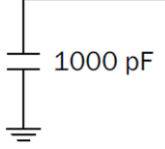
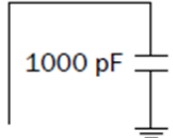
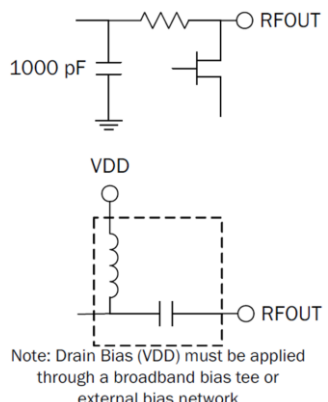
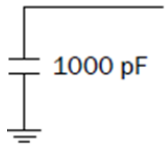
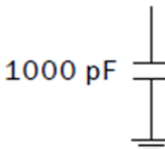
Die Drawing (Dimensions in microns)



Notes:

1. No connection required for unlabeled bond pads
2. Die thickness is 0.102mm (4mil)
3. Typical bond pad is 0.100mm square
4. Backside metallization: gold
5. Backside metal is ground
6. Bond pad metallization: gold

Pin Names and Descriptions

Pin	Name	Description	Interface Schematic
1	RFIN	RF Input. This pad is DC coupled and matched to 50Ω from DC to 22GHz. 50Ω microstrip transmission line on 0.127mm (5mil) thick alumina thin film substrate is recommended for RF input and output. A DC blocking capacitor is required for this connection. The value of this capacitor will be based on the desired frequency range of application.	
2	VG2	Each amplifier stage in the SDA-2000 is a cascade configuration. The gate of each upper FET in the cascade amplifiers is biased with the 3.5V _{DC} (for V _{DD} = 8V). The DC connection for the upper device gates runs across the length of the die. Pads 2 and 5 are both on this DC connection but are on opposite ends of the die. The V _{G2} connection can therefore be placed on either pad. A bypass capacitor is recommended on both ends, pads 2 and 5.	
3	VTO	The output drain termination pad. This pad requires a 1000pF bypass capacitor with the shortest wirebond length to prevent low frequency gain ripple.	
4	RFOUT and VDD	RF Output. 50Ω microstrip transmission line on 0.127mm (5mil) thick alumina thin film substrate is recommended for RF input and output. Connect the DC bias (V _{DD}) network to provide drain current (I _{DD}). Note: Drain Bias (V _{DD}) must be applied through a broadband bias tee or external bias network.	
5	VCAS	Each amplifier stage in the SDA-2000 is a cascade configuration. The gate of each upper FET in the cascade amplifiers is biased with the 3.5V _{DC} (for V _{DD} = 8V). The DC connection for the upper device gates runs across the length of the die. Pads 2 and 5 are both on this DC connection but are on opposite ends of the die. The V _{G2} connection can therefore be placed on either pad. A bypass capacitor is recommended on both ends, pads 2 and 5.	
6	VG21	Not connected.	
7	VTI	Input gate voltage for the lower devices in the cascade amplifier. This pad also serves as the RF ground for the input termination resistor. The DC voltage applied to this pad will be between -2.0V _{DC} (device is pinched OFF) to 0V _{DC} (fully ON). The value of this capacitor will effect the low frequency response of the amplifier.	
Die	GND	Ground connection. Connect die bottom directly to ground plane for best performance. NOTE: The die should be connected directly to the ground plane with conductive epoxy.	

Bias Sequence (Turn Device On):

VTI - Apply negative -2.0 volts. (This shuts the device off.)

VG2 - Apply positive 3.5 volts.

VDD - Apply positive 8.0 volts to the RF output bias tee.

Important - Adjust VTI between -2 to +1.0 volts to achieve $I_{DD} = 410\text{mA}$ nominal.

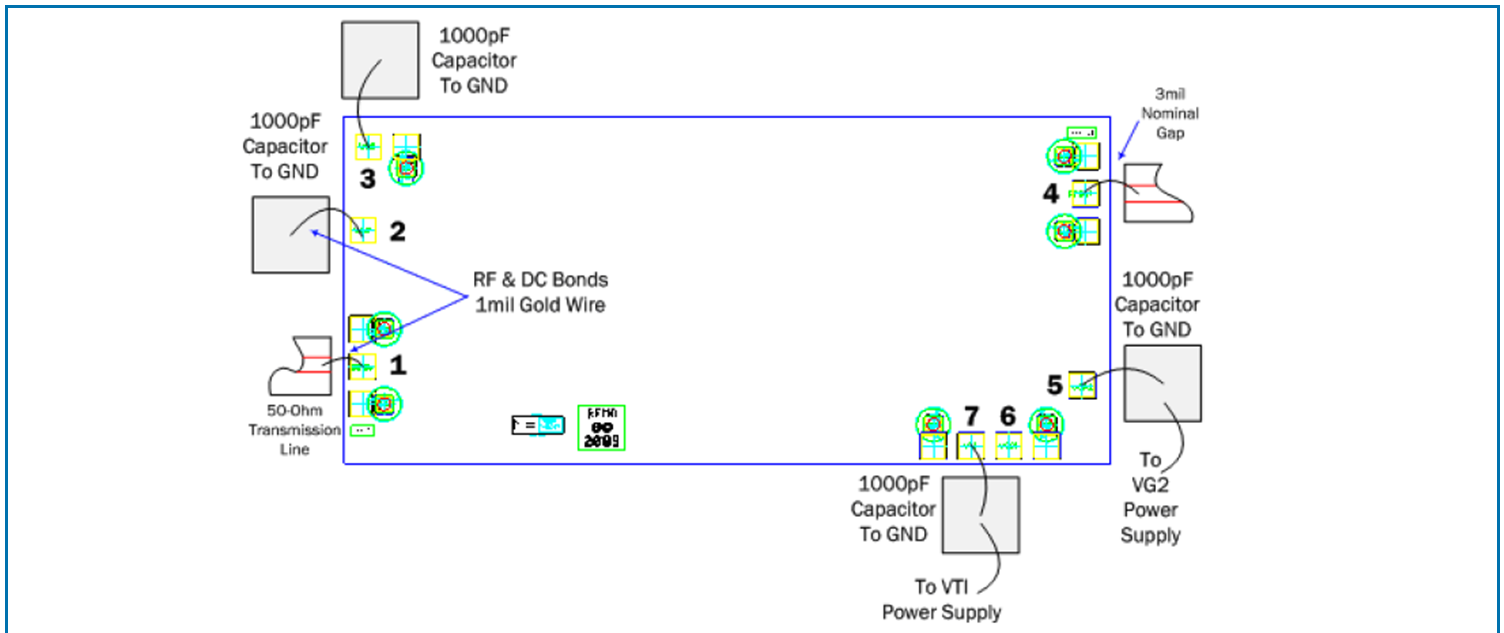
Bias Sequence (Turn Device Off):

VTI - Return to negative -2.0 volts.

VDD - Remove positive 8.0 volts to the RF output bias tee.

VG2 - Remove positive 3.5 volts.

Assembly Diagram

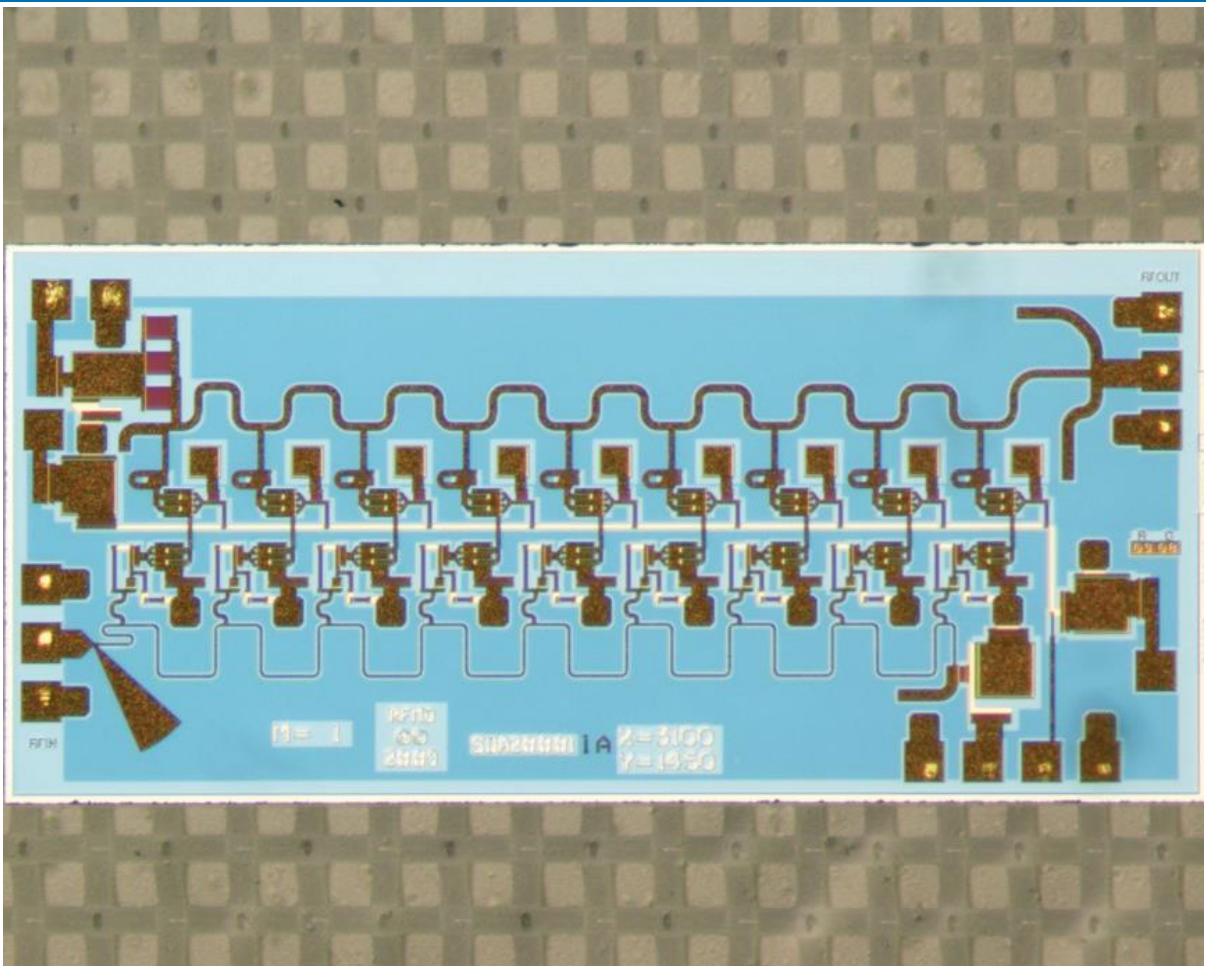


Measurement Technique

All data presented in this document represents the integrated circuit and accompanying bond wires.

All performance data reported in this document were measured in the following manner. Data was taken using a temperature controlled probe station utilizing 150 μ m pitch GSG probes. The interface between the probes and integrated circuit was made with a coplanar to microstrip ceramic test interface. The test interface was wire bonded to the die using 1mil diameter bondwires. The spacing between the test interface and the die was 200 μ m, and the bond wire loop height was 100 μ m. The calibration of the test fixture included the probes and test interfaces, so that the measurement reference plane was at the point of bond wire attachment to the ceramic interface.

SDA-2000 Product Image



X-ON Electronics

Largest Supplier of Electrical and Electronic Components

Click to view similar products for [RF Amplifier](#) category:

Click to view products by [Qorvo](#) manufacturer:

Other Similar products are found below :

[A82-1](#) [BGA622H6820XTSA1](#) [BGA 728L7 E6327](#) [BGB719N7ESDE6327XTMA1](#) [HMC397-SX](#) [HMC405](#) [HMC561-SX](#) [HMC8120-SX](#)
[HMC8121-SX](#) [HMC-ALH382-SX](#) [HMC-ALH476-SX](#) [SE2433T-R](#) [SMA3101-TL-E](#) [SMA39](#) [A66-1](#) [A66-3](#) [A67-1](#) [LX5535LQ](#) [LX5540LL](#)
[MAAM02350](#) [HMC3653LP3BETR](#) [HMC549MS8GETR](#) [HMC-ALH435-SX](#) [SMA101](#) [SMA32](#) [SMA411](#) [SMA531](#) [SST12LP19E-QX6E](#)
[WPM0510A](#) [HMC5929LS6TR](#) [HMC5879LS7TR](#) [HMC1126](#) [HMC1087F10](#) [HMC1086](#) [HMC1016](#) [SMA1212](#) [MAX2689EWS+T](#)
[MAAMSS0041TR](#) [MAAM37000-A1G](#) [LTC6430AIUF-15#PBF](#) [CHA5115-QDG](#) [SMA70-2](#) [SMA4011](#) [A231](#) [HMC-AUH232](#) [LX5511LQ](#)
[LX5511LQ-TR](#) [HMC7441-SX](#) [HMC-ALH310](#) [XD1001-BD-000V](#)