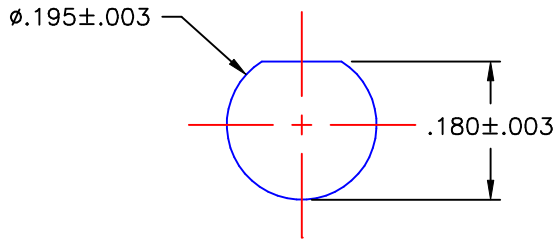
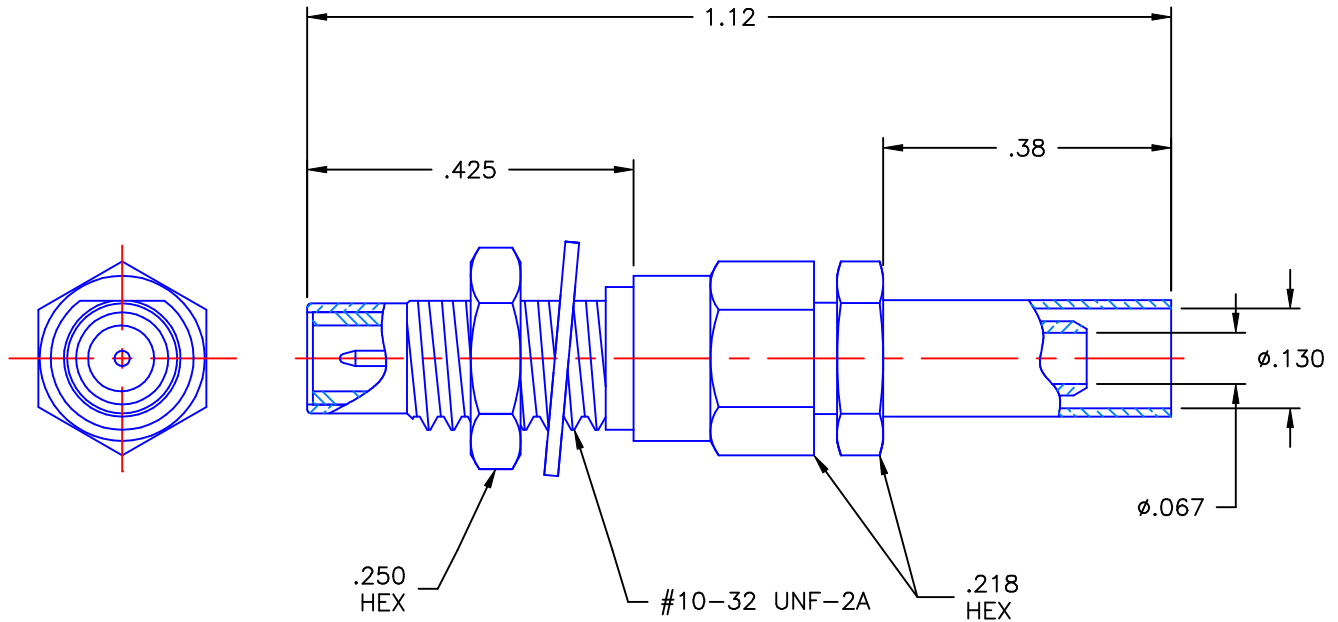


REVISIONS			
REV	DESCRIPTION	DATE	APPROVED
-	INITIAL RELEASE	03/05/99	D.N.



MOUNTING HOLE DIMENSIONS



NOTES:


MATERIAL:

1. LOCKWASHER = PHOSPHOR BRONZE, PER ASTM B139, COPPER ALLOY C53400, TEMPER H04.
2. INSULATORS = VIRGIN WHITE TEFLON, PER ASTM D1710, GRADE 1, TYPE I, CLASS "A".
3. CRIMP SLEEVE = SEAMLESS COPPER TUBING, PER ASTM B75, TYPE C12000, TEMPER LIGHT ANNEAL 050, EXCEPT YIELD STRENGTH.
4. ALL OTHER METAL PARTS = BRASS, PER ASTM B16, ALLOY C36000, TEMPER H02.

FINISH:

1. CONTACT = GOLD PLATE PER MIL-G-45204, TYPE II, CLASS 1, GRADE C, OVER .00010 TO .00020 STRESS FREE SULFAMATE NICKEL PER QQ-N-290.
2. ALL OTHER METAL PARTS = NICKEL PLATE PER QQ-N-290, CLASS 1, GRADE G, EXCEPT .0001 TO .0002 THICK OVER .00005 TO .0001 THICK COPPER PER MIL-C-14550.

Property of Radiall Incorporated
This document cannot be reproduced or communicated to a third party without prior written permission of RADIALL Incorporated.

UNLESS OTHERWISE SPECIFIED DIMENSIONS ARE IN INCHES TOLERANCES ON		DWN: DATE	 APPLIED ENGINEERING PRODUCTS 104 John W. Murphy Dr. New Haven, CT 06513	SMC STRAIGHT MALE SOLDER/CRIMP TO RD-316 FLEXIBLE	
		D.N. 03/04/99			
DECIMAL	ANGLE	CHKD: DATE	SIZE FSCM NO. DWG NO. REV A 19505 1003-7571-019 -		
	$\pm 2^\circ$	G.L. 03/05/99			
REFERENCE:		APVD: DATE	SCALE 4:1 THIRD ANGLE PROJECTION SHEET 1 OF 1		
		E.W. 03/05/99			
ORIGINATOR: D.N. DATE: 03/04/99		MATERIAL & FINISHES:		SEE NOTES	

1003-7571-019

X-ON Electronics

Largest Supplier of Electrical and Electronic Components

Click to view similar products for [RF Connectors](#) / [Coaxial Connectors](#) category:

Click to view products by [Radiall](#) manufacturer:

Other Similar products are found below :

[8915-1511-000](#) [89674-0827](#) [6001-7071-019](#) [6002-7051-003](#) [6002-7551-202](#) [6059674-1](#) [619550-1](#) [630059-000](#) [M39030/3-01N](#) [6500-7071-046](#) [6769](#) [CX050L2AQ](#) [7002-1541-010](#) [7002-1542-011](#) [7004-1512-000](#) [7009-1511-004](#) [7010-1511-000](#) [7029-1511-060](#) [7101-1541-010](#) [7101-1571-002](#) [7145-1521-002](#) [7203-1571-003](#) [7209-1511-011](#) [7210-1511-015](#) [7210-1511-019](#) [73137-5015](#) [73216-2241](#) [73404-2300](#) [7405-1521-005](#) [7405-1521-802](#) [8527](#) [8547](#) [FS11V](#) [877931](#) [8808-1511-001](#) [9074-9513-000](#) [9101-9573-002](#) [910A205F](#) [9130-9573-002](#) [PL11SC-026](#) [PL375-33](#) [PL40-5](#) [PL74C-221](#) [PL75MC-217](#) [PL803-7](#) [1200690078](#) [1-201144-1](#) [R107003010W](#) [R110A172100](#) [R112186000](#)