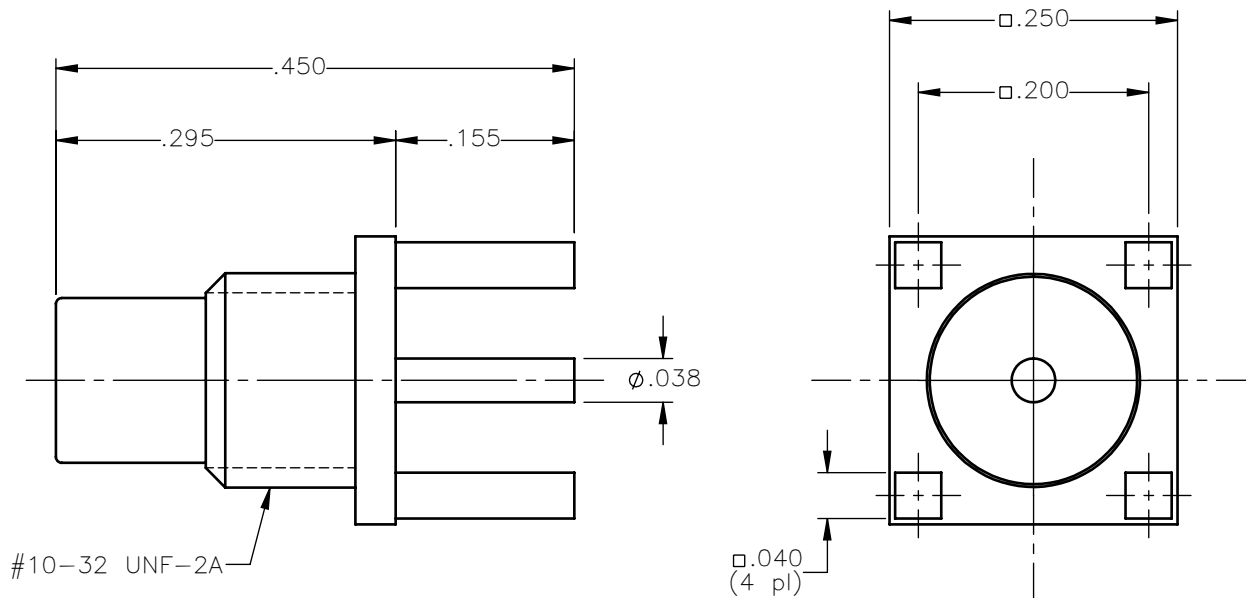


| REVISIONS |                 |          |          |
|-----------|-----------------|----------|----------|
| REV.      | DESCRIPTION     | DATE     | APPROVED |
| A         | INITIAL RELEASE | 03/26/18 | C.E.     |





NOTES:

MATERIALS:

1. BODY & CONTACT = BRASS PER ASTM B16, ALLOY C36000, TEMPER H02.
2. INSULATOR = VIRGIN WHITE TEFLON PER ASTM D1710, GRADE 1, TYPE I, CLASS "B".

FINISHES:

1. BODY = NICKEL PLATE PER AMS-QQ-N-290, CLASS 1, GRADE G, EXCEPT 100 TO 200 $\mu$ in THICK OVER 50 TO 100 $\mu$ in THICK COPPER PER AMS 2418.
2. CONTACT = GOLD PLATE PER ASTM B488-11, TYPE II, 50 $\mu$ in MIN, GRADE C, OVER 100 TO 200 $\mu$ in STRESS FREE SULFAMATE NICKEL PER AMS-QQ-N-290.

|   |                       |          |   |   |               |              |
|---|-----------------------|----------|---|---|---------------|--------------|
| UNLESS OTHERWISE SPECIFIED DIMENSIONS ARE IN INCHES TOLERANCES ON | DWN:                  | DATE     |  Property of Radiall<br>This document cannot be reproduced or communicated to a third party without prior written permission of RADIALL. |  |               |              |
|   | C.E.                  | 03/26/18 |   |   |               |              |
| DECIMAL   | ANGLE                 | CHKD:    | DATE  | SMC STRAIGHT MALE JACK<br>P.C.B. MOUNT RECEPTACLE                                     |               |              |
|   |                       | D.N.     | 03/26/18  |   |               |              |
|   |                       | APVD:    | DATE  |   |               |              |
|   |                       | J.M.     | 03/26/18  |   |               |              |
| REFERENCE:  | MATERIALS & FINISHES: |          | SIZE  | FSCM NO.  | DWG NO.       | REV          |
| ORIGINATED: C.E.<br>DATE: 03/26/18                                | SEE NOTES             |          | A   | 19505   | 1009-7511-000 | A            |
|   |                       |          | SCALE 6:1   | THIRD ANGLE PROJECTION  |               | SHEET 1 OF 1 |

1009-7511-000

## X-ON Electronics

Largest Supplier of Electrical and Electronic Components

*Click to view similar products for [RF Connectors / Coaxial Connectors](#) category:*

*Click to view products by [Radiall](#) manufacturer:*

Other Similar products are found below :

[8915-1511-000](#) [89674-0827](#) [6001-7071-019](#) [6002-7051-003](#) [6002-7551-202](#) [6059674-1](#) [619550-1](#) [630059-000](#) [M39030/3-01N](#) [6500-7071-046](#) [6769](#) [CX050L2AQ](#) [7002-1541-010](#) [7002-1542-011](#) [7004-1512-000](#) [7009-1511-004](#) [7010-1511-000](#) [7029-1511-060](#) [7101-1541-010](#) [7101-1571-002](#) [7105-1521-002](#) [7145-1521-002](#) [7203-1571-003](#) [7209-1511-011](#) [7210-1511-015](#) [7210-1511-019](#) [73137-5015](#) [73216-2241](#) [73404-2300](#) [7405-1521-005](#) [7405-1521-802](#) [8527](#) [8547](#) [FS11V](#) [877931](#) [8808-1511-001](#) [9074-9513-000](#) [9101-9573-002](#) [910A205F](#) [9130-9573-002](#) [PL11SC-026](#) [PL375-33](#) [PL40-5](#) [PL74C-221](#) [PL75MC-217](#) [PL803-7](#) [1200690078](#) [1-201144-1](#) [R107003010W](#) [R110A172100](#)