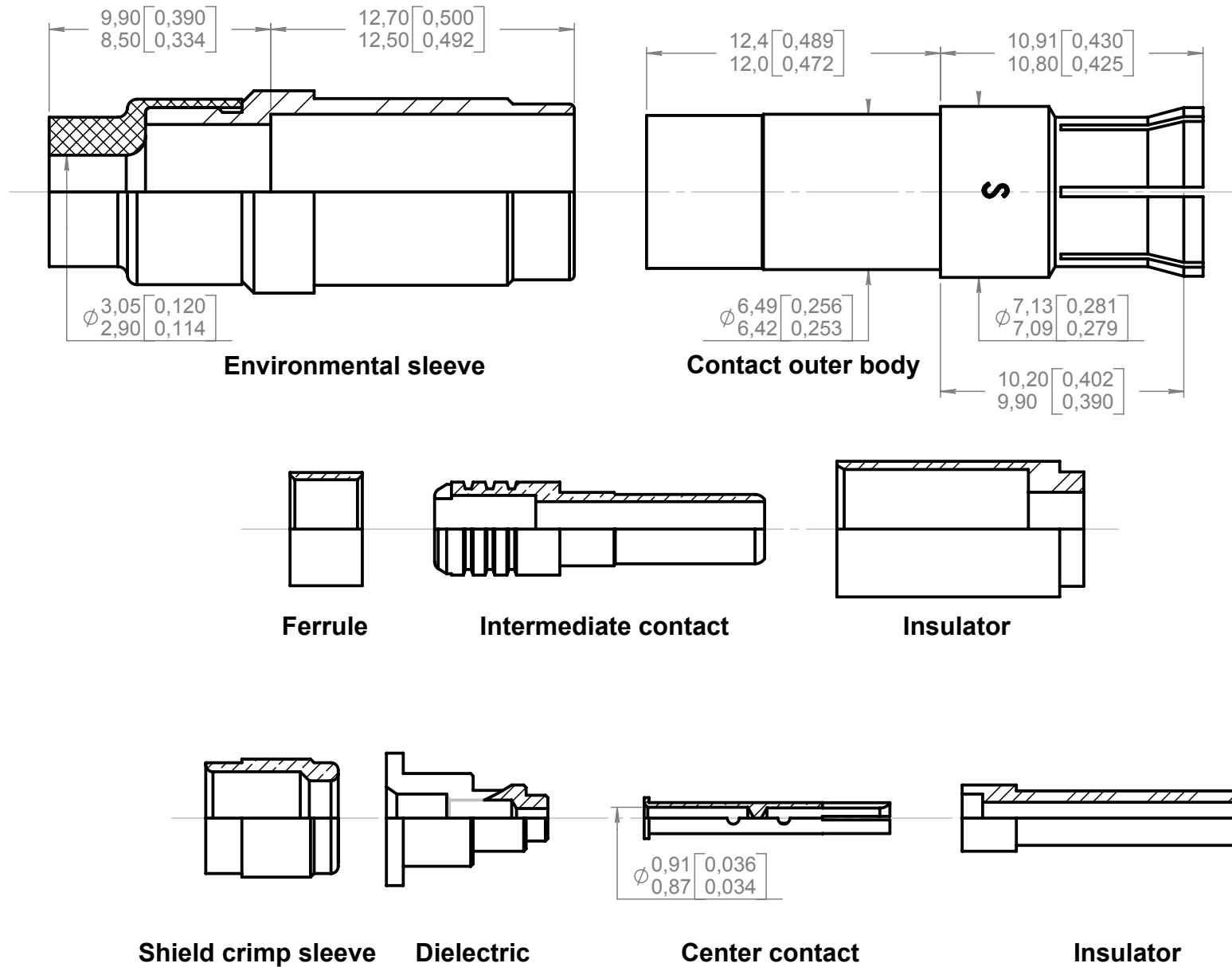


Series
EPX

ENVIRONMENTAL CONCENTRIC TWINAX
SOCKET CONTACT
Twinax PAN 6421 and M17176/00002 cables

Issue:
Feb. 20, 2008

Page
1/1



Materials:

- Outer body contact and intermediate contact: Beryllium copper 1/2 hardness in knoop 140 max (126HV) for crimp barrel.
- Ferrule, shield crimp sleeve and intermediate contact: Copper alloy.
- Dielectric and insulators: PTFE.
- Rear environmental sleeve: Fluorosilicone.
- Front environmental sleeve: Thermoplastic.

Finishes:

- All metallic parts: Gold per MIL-G-45204 type I or II grade C or D class 1, 50 microinches over nickel plate per QQ-N-290.

Crimping tools: (crimped contacts will show no crack when inspected, per MIL-C-22520, at 10x)

- Center contact: - Basic tool: M22520/2.01 (RADIALL: 282 281).
 - Selector set 3.
 - Positionner RADIALL: 282 560.
- Intermediate and outer body contacts:
 - Basic tool: M22520/5.01 (RADIALL: 282 293).
 - Die: M22520/5.05 (RADIALL: 282 246).
 - Die closure: B for intermediate contact.
 A for outer body contact.

Extraction tool: M81969/28.01 (RADIALL 282 946).

See wiring specification: RP 2737.

DIMENSIONS : mm (inch are given for information only)



This information is given as an indication. In the continual goal to improve our products, we reserve the right to make any modifications judged necessary.

CREATION	Feb. 20, 08	12,40/12,00 [0,489/0,472] was 12,20/12,00 [0,489/0,472] 9,90/8,50 [0,390/0,334] was 9,70/8,70 [0,382/0,342]	S.Malty	Legloahec
	Pen:	Sep. 11, 07	Added "S" on contact outer body.	S.Malty
NOM: GARCIA L.	Oct. 28, 03	Updated of shield crimp sleeve.	V.Dupuis	C.Lahoreau
	Mar. 12, 03	Modif. of front sleeve (12,7/12,5 was 9,7/9,5).	L.Garcia	C.Lahoreau
DATE: Nov. 02, 98	Jan. 20, 99	Updated from the detail drawings. Added standards and M17176/00002 cable.	L.Garcia	L.Giet
APPR.: GIET L.	Issue	Revisions	Name	Approved

X-ON Electronics

Largest Supplier of Electrical and Electronic Components

Click to view similar products for [Heavy Duty Power Connectors](#) category:

Click to view products by [Radiall](#) manufacturer:

Other Similar products are found below :

[647757-1](#) [6643411-1](#) [6646058-2](#) [6646137-1](#) [6646138-1](#) [6646479-1](#) [6646608-1](#) [6646786-1](#) [6646940-1](#) [6651091-1](#) [6651525-1](#) [6651529-1](#)
[6651788-1](#) [696475-1](#) [702-32-01109](#) [703-25-02205](#) [73000005059](#) [73000005642](#) [73080255059](#) [73080965046](#) [765-15-0080A](#) [765-16-0080B](#)
[765-18-0080D](#) [829992-1](#) [902-77-02113](#) [PS00/A0620/6300](#) [PS25/A0420/63](#) [129-1J](#) [1409400](#) [AN0024023](#) [E6374G1](#) [e6389g2](#) [157-43GW8](#)
[MS3117-14AC](#) [1643543-1](#) [1650540-1](#) [1651811-2](#) [1766260-1](#) [1766282-1](#) [1766966-1](#) [1791340000](#) [NLDFT-3-BL-L-S120-M40A](#) [NLDFT-N-](#)
[W-L-C240-M40B](#) [NLS-2-R-C240-M40B](#) [NLS-N-W-C240-M40B](#) [NPS-3-BL-T6](#) [1986615-1](#) [2-1589900-8](#) [2199314-1](#) [KA8102](#)