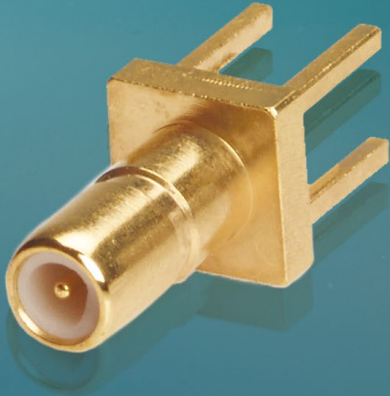


**SECTION 12**



**SSMA / SSMB / SSMC**  
*R121 / R203 / R202*



**Contents**

**SSMA**

Introduction ..... 12-4  
Characteristics ..... 12-4  
Plugs ..... 12-5  
Receptacles ..... 12-6  
In series adapters ..... 12-6

**SSMB**

Introduction ..... 12-7  
Characteristics ..... 12-7  
Plugs and jacks ..... 12-8 to 12-9  
Receptacles ..... 12-9 to 12-11  
In series adapters ..... 12-11  
Panel drilling ..... 12-15

**SSMC**

Introduction ..... 12-12  
Characteristics ..... 12-12  
Plugs and jacks ..... 12-13 to 12-14  
Receptacles ..... 12-14  
In series adapters ..... 12-14  
Panel drilling ..... 12-15

## Introduction



|                    |             |
|--------------------|-------------|
| 50Ω                | DC - 18 GHz |
| DC-34 GHz possible |             |

### GENERAL

- Miniature coaxial connectors
- Screw-on coupling
- High RF performance
- Reduced weight and size

### APPLICABLE STANDARDS

- CECC 22 160
- MIL-STD-348 fig.319

### APPLICATIONS

- Military aeronautics
- Missiles
- Detection - countermeasures

### SPACE QUALIFIED APPROVAL

- SCC 3402 (ESA)

Introduced in the 1960s, the SSMA series of connectors are of identical construction to the classic SSMA series but offer the benefit of reduced dimensions. They are recommended for use on equipment having limited component space availability combined with frequency requirements up to 34 GHz. Today, SSMA is mostly used for maintenance of existing equipment. For new projects, we advise using SMP or SMP-LOCK™ connectors.

## Characteristics

| Test / Characteristics                                | Values / Remarks                                      |                                      |
|---|---|--------------------------------------|
| <b>ELECTRICAL CHARACTERISTICS</b>                     |   |                                      |
| Impedance   | 50Ω   |                                      |
| Frequency range                                       | DC - 18 GHz   |                                      |
| VSWR  | .085" / RG405 semi-rigid cable: 1.07 + 0.01 F (GHz)   |                                      |
| Insertion loss (typ.) dB                              | 0.04 vF (GHz)   |                                      |
| RF leakage (min) dB                                   | -90 + F (GHz)   |                                      |
| Insulation resistance                                 | ≥ 1000 MΩ   |                                      |
| Contact resistance                                    | Center contact: 5mΩ max. / Outer contact: 2.5mΩ max.  |                                      |
| Voltage in V. Rms<br>• At sea level<br>• At 70,000 ft | Dielectric withstanding voltage<br>≥ 750 V.<br>150 V. | Working voltage<br>≤ 250 V.<br>65 V. |

## MECHANICAL CHARACTERISTICS

|                                 |   |
|---------------------------------|---|
| Durability                      | > 500 cycles                            |
| Force to engage / disengage     | Torque 12 N.com [2 inch-pounds]         |
| Recommended coupling not torque | 60 to 80 N.com [5.3 to 7.1 inch-pounds] |
| Cable retention force           | .085: / RG405 cable<br>> 136 N [30lbf]  |
| Center contact retention force  | 22N [5lbf] min.                         |

## ENVIRONMENTAL CHARACTERISTICS

|   |   |
|---|---|
| Temperature range<br>• Standard models<br>• Semi-rigid cables | - 55°C / +155°C<br>- 55°C / +105°C        |
| Thermal cycling   | MIL-STD-202, Method 102, Condition D      |
| Vibration   | MIL-STD-202, Method 204, Condition A, 10g |
| Shock   | MIL-STD-202, Method 213, Condition A, 50g |
| Moisture resistance   | MIL-STD-202, Method 106                   |
| Corrosion   | MIL-STD-202, Method 101, Condition B      |

## MATERIALS AND PLATING

|                 | Material                                 | Plating                  |
|-----------------|--|--------------------------|
| Body/nut        | Stainless steel / Brass                  | Gold or Passivated / BBR |
| Center contacts | Brass (male) / Beryllium copper (female) | Gold over Nickel         |
| Gaskets         | Silicon rubber                           |                          |
| Insulators      | PTFE                                     |                          |

Plugs

**PLUGS FOR SEMI-RIGID CABLES, SOLDER TYPE**

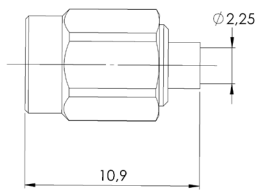


Fig. 1

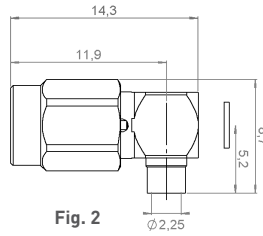


Fig. 2

| Cable group | Cable group dia. | Part number (Gold) | Fig. | Captive center contact | Note        |
|-------------|------------------|--------------------|------|------------------------|-------------|
| RG405       | .085"            | R121 053 000       | 1    | yes                    | Straight    |
|             |                  | R121 153 000       | 2    |                        | Right angle |

**PLUGS FOR FLEXIBLE CABLE, CRIMP TYPE**

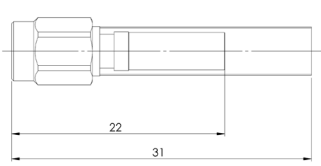


Fig. 1

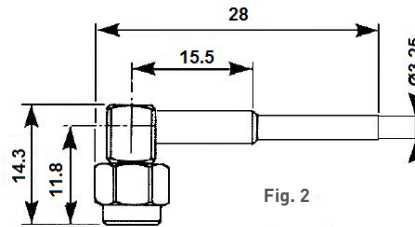


Fig. 2

| Cable group   | Cable group dia. | Part number (Gold) | Fig. | Captive center contact | Note                            |
|---------------|------------------|--------------------|------|------------------------|---------------------------------|
| RG174 / RG316 | 2.6/50S          | R121 072 000       | 1    | yes                    | Straight - heatshrink sleeve    |
|               |                  | R121 172 000       | 2    |                        | Right angle - heatshrink sleeve |
|               |                  | 9765-9523-003      |      |                        | Right angle                     |

Receptacles and adapters

**EXTENDED DIELECTRIC FEMALE RECEPTACLE**

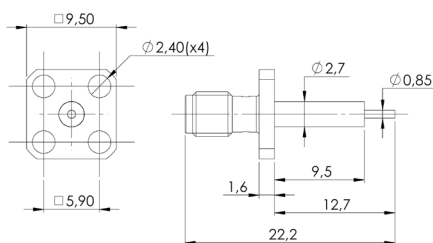


Fig. 1

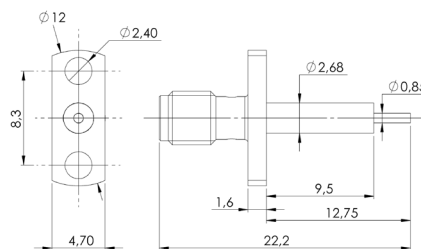
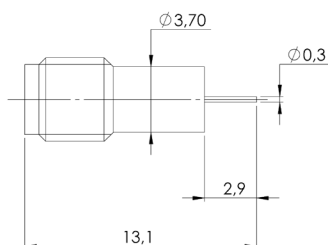


Fig. 2

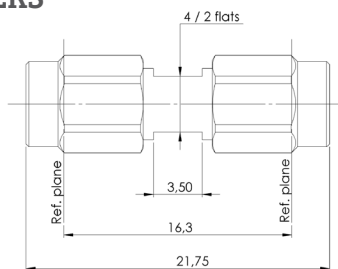
| Part number (Gold) | Fig. | Captive center contact | Panel drilling | Note          |
|--------------------|------|------------------------|----------------|---------------|
| R121 414 000       | 1    | yes (epoxy)            | NEW            | Square flange |
| R121 464 000       | 2    |                        |                | Narrow flange |

**HERMETIC FEMALE RECEPTACLE**



| Part number (gold) | Captive center contact | Contact type | Note           |
|--------------------|------------------------|--------------|----------------|
| R121 630 003       | yes                    | Cylindrical  | Solder in type |

**IN SERIES ADAPTERS**



| Part number (Gold) | Part number (Passivated) | Captive center contact | Finish | Note                  |
|--------------------|--------------------------|------------------------|--------|-----------------------|
| R121 703 000       | R121 705 001             | yes                    | Nickel | male-male adapter     |
|                    |                          |                        | Gold   | female-female adapter |

## Introduction



### GENERAL

- DC - 12 GHz
- Impedance 50Ω
- Snap-on coupling
- Microminiature connectors
- Very low weight and size

### APPLICATIONS

- Civil and military telecommunications
- Video equipment

### APPLICABLE STANDARDS

- MIL-STD-348A
- IEC 169-19
- MIL-PRF-39012

SSMB is a small size version of SMB, developed in 1995.

## Characteristics

| Test / Characteristics | Values / Remarks |
|------------------------|------------------|
| <b>GENERAL</b>         |                  |
| Impedance              | 50Ω              |
| Frequency range        | DC - 12.4 GHz    |
| Temperature range      | -65°C to + 165°C |

### ELECTRICAL CHARACTERISTICS

|  |  |   |
|--|--|---|
| Insertion loss in dB   | 0.3vF (GHz)  |   |
| RF leakage   | < -55 dB at 1 GHz  |   |
| VSWR   | RG 178 cable: 1.25 + 0.02F (GHz)                                       |   |
| Contact resistance   | Center contact: 5mΩ max. Outer contact: 1mΩ max.                       |   |
| Insulation resistance  | 1000MΩ   |   |
| Voltage in VRMS  | Dielectric withstanding voltage  | Working voltage   |
| <ul style="list-style-type: none"> <li>• At sea level</li> <li>• At 70,000 ft</li> </ul> | <ul style="list-style-type: none"> <li>≥ 500V</li> <li>100V</li> </ul> | <ul style="list-style-type: none"> <li>≤ 250V</li> <li>60V</li> </ul> |

### MECHANICAL CHARACTERISTICS

|   |   |
|---|---|
| Cable retention force   | RG 174 : 50 N - RD 316 : 100 N  |
| Mating endurance  | 500   |
| Center contact retention force  | ≥ 8 N   |
| <ul style="list-style-type: none"> <li>• Force to engage</li> <li>• Force to disengage</li> </ul> | <ul style="list-style-type: none"> <li>≤ 27 N</li> <li>≥ 8 N</li> </ul> |

### ENVIRONMENTAL CHARACTERISTICS

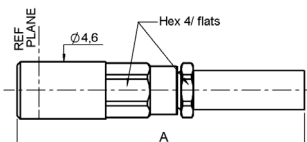
|                       |   |
|-----------------------|---|
| Vibration             | CEI60 169-19/68-2-6 (10g-10 to 500 Hz)                  |
| Shock                 | MIL-STD-202, Method 213, Condition B, 75g-6ms 1/2 sinus |
| Corrosion (salt mist) | MIL-STD-202, Method 101, Condition B (48h)              |

### MATERIALS AND PLATING

|            | Material         | Plating |
|------------|------------------|---------|
| Body       | Brass            | Gold    |
| Contacts   | Beryllium copper | Gold    |
| Insulators | PTFE             |         |

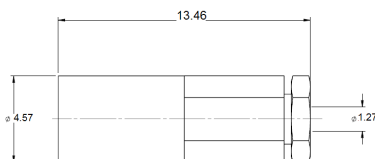
Plugs

**STRAIGHT PLUGS CRIMP TYPE FOR FLEXIBLE CABLES**



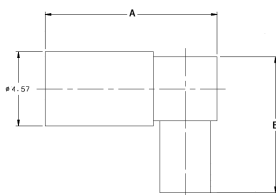
| Cable group           | Cable group dia. | Part number   | Dimensions A (mm) | Captive center contact | Finish |
|-----------------------|------------------|---------------|-------------------|------------------------|--------|
| RG178 / RG196         | 2/50S            | 7202-1572-002 | 17.8              | yes                    | Gold   |
| RG174 / RG316 / RG179 | 2.6/50S          | 7202-1572-003 |                   |                        |        |
| RD316                 | 2.6/50D          | 7202-1572-019 |                   |                        |        |
| RG178 / RG196         | 2/50/S           | R203 073 000  | 23.3              |                        |        |
| RG174 / RG316         | 2.6/50/S         | R203 075 000  |                   |                        |        |

**STRAIGHT PLUGS, SOLDER TYPE FOR SEMI-RIGID CABLES**



| Cable group | Cable group dia. | Part number   | Captive center contact | Finish |
|-------------|------------------|---------------|------------------------|--------|
| RG405       | .085"            | 7202-1542-010 | yes                    | Gold   |
| M17 / 151   | .047"            | 7202-1542-011 |                        |        |

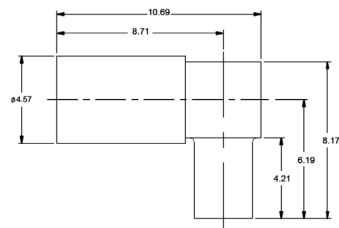
**RIGHT ANGLE PLUGS, CRIMP TYPE FOR FLEXIBLE CABLES**



| Cable group   | Cable group dia. | Part number   | Dimensions (mm) |      | Captive center contact | Finish        | Note              |
|---------------|------------------|---------------|-----------------|------|------------------------|---------------|-------------------|
|               |                  |               | A               | B    |                        |               |                   |
| RG178 / RG196 | 2/50S            | 7405-1521-002 | 10.7            | 8.4  | yes                    | Gold          |                   |
| RG174 / RG316 | 2.6/50S          | 7405-1521-003 |                 |      |                        |               |                   |
| RD178         | 2/50D            | 7405-1521-005 |                 |      |                        |               |                   |
| RD316         | 2.6/50D          | 7405-1521-019 |                 |      |                        |               |                   |
| RG178 / RG196 | 2/50S            | 7405-2521-002 | 18.1            | 12.2 |                        | Gold + Nickel |                   |
|               |                  | R203 173 000  |                 |      |                        |               |                   |
|               |                  | R203 173 080  |                 |      |                        |               |                   |
| RG316         | 2.6/50+75        | R203 175 000  | 12.2            | 13.6 |                        | Gold          | Heatshrink sleeve |
|               |                  |               |                 |      |                        |               | Low profile       |
|               |                  |               |                 |      |                        |               | Heatshrink sleeve |

Plugs, jacks and receptacles

**RIGHT ANGLE PLUGS, SOLDER TYPE FOR SEMI RIGID CABLES**



| Cable group | Cable group dia. | Part number   | Captive center contact | Finish |
|-------------|------------------|---------------|------------------------|--------|
| RG405       | .085"            | 7405-1561-010 | yes                    | Gold   |
| M17 / 151   | .047"            | 7405-1561-011 |                        |        |

**STRAIGHT AND RIGHT ANGLE BULKHEAD JACKS CRIMP TYPE FOR FLEXIBLE CABLE**

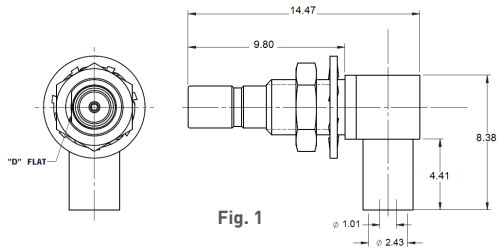


Fig. 1

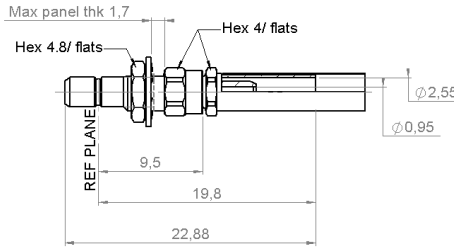
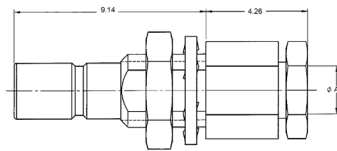


Fig. 2

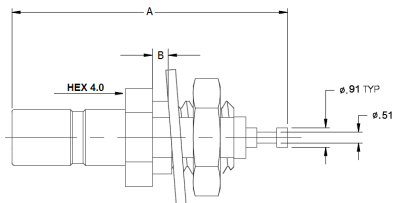
| Cable group   | Cable group dia. | Part number   | Fig. | Captive center contact | Panel drilling | Finish | Note                   |
|---------------|------------------|---------------|------|------------------------|----------------|--------|------------------------|
| RG178 / RG196 | 2/50S            | 7406-1521-002 | 1    | yes                    | P01            | Gold   | Right angle Rear mount |
| RG174 / RG316 | 2.6/50S          | 7406-1521-003 |      |                        |                |        |                        |
| RD178         | 2/50D            | 7406-1521-005 |      |                        |                |        |                        |
| RG178 / RG196 | 2/50/S           | R203 313 000  | 2    |                        |                |        | Straight rear mount    |

**STRAIGHT BULKHEAD JACK SOLDER TYPE FOR SEMI-RIGID CABLE**



| Cable group | Cable group dia. | Part number   | Dimensions A (mm) | Captive center contact | Panel drilling | Finish |
|-------------|------------------|---------------|-------------------|------------------------|----------------|--------|
| RG405       | .085"            | 7203-1541-010 | 2.26              | yes                    | P01            | Gold   |
| M17 / 151   | .045"            | 7203-1541-011 | 1.27              |                        |                |        |

**STRAIGHT BULKHEAD RECEPTACLES (male center contact)**

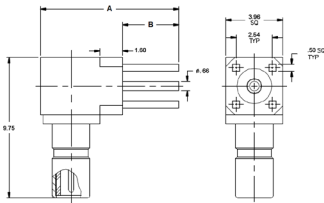


| Part Number   | Captive center contact | Dimensions (mm) |     | Panel drilling | Finish | Note        |
|---------------|------------------------|-----------------|-----|----------------|--------|-------------|
|               |                        | A               | B   |                |        |             |
| 7204-1511-000 | yes                    | 13.0            | 2.0 | P01            | Gold   | Rear mount  |
| 7219-1511-000 |                        |                 | 1.7 |                |        | Front mount |
| R203 553 00   |                        |                 |     |                |        |             |



Receptacles

**RIGHT ANGLE PCB BULKHEAD RECEPTACLES (male center contact)**



| Part number   | Captive center contact | Panel drilling | Finish    | Dimensions |      |     |
|---------------|------------------------|----------------|-----------|------------|------|-----|
|               |                        |                |           | A          | B    | C   |
| 7410-1511-000 | yes                    | P01            | Gold      | 14.5       | 12.5 | 9.8 |
| 7410-1511-012 |                        |                | Pretinned |            |      |     |
| 7410-1511-050 |                        |                | Gold      |            |      |     |
| 7410-1511-040 |                        |                | Pretinned |            |      |     |

**STRAIGHT PCB RECEPTACLES (male center contact)**

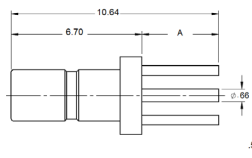


Fig. 1

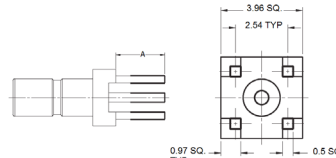


Fig. 2

| Part number   | Fig. | Captive center contact | Dimensions (mm) A | Panel drilling | Finish | Note                         |
|---------------|------|------------------------|-------------------|----------------|--------|------------------------------|
| 7209-1511-000 | 1    | yes                    | 3.93              | P02            | Gold   | No stand off                 |
| 7209-1511-012 |      |                        | 3.43              |                |        | Pretinned legs, no stand off |
| 7209-1511-011 |      |                        | 0.0               |                |        |                              |
| 7209-1511-015 | 2    |                        | 3.43              | P02            |        | SMT version                  |
| 7209-1511-040 |      |                        | 3.2               |                |        | Pretinned legs               |
| 7209-1511-050 |      |                        |                   |                |        | Body 3.5                     |
| R203 426 000  |      |                        |                   |                |        |                              |

**STRAIGHT PCB RECEPTACLES (female center contact)**

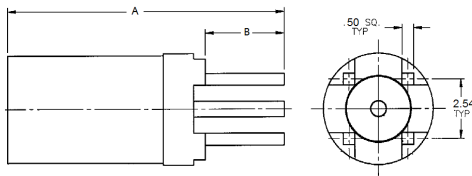


Fig. 1



Fig. 2

| Part number   | Fig. | Captive center contact | Dimensions (mm) |      | Panel drilling | Finish | Note                         |
|---------------|------|------------------------|-----------------|------|----------------|--------|------------------------------|
|               |      |                        | A               | B    |                |        |                              |
| 7225-1512-000 | 1    | yes                    | 12.0            | 3.93 | P02            | Gold   | No stand off                 |
| 7225-1512-012 |      |                        | 12.0            | 3.93 |                |        | Pretinned legs, no stand off |
| 7225-1512-050 |      |                        | 12.0            | 3.43 |                |        |                              |
| 7225-1512-040 |      |                        | 12.0            | 3.43 |                |        | Pretinned legs               |
| 7225-1512-060 | 2    |                        | 12.0            | 3.93 |                |        | End launch version           |
| 7225-1512-004 | 1    |                        | 8.7             | 0.0  |                |        |                              |

Receptacles

**RIGHT ANGLE PCB RECEPTACLES (male center contact)**

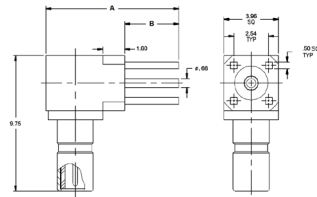
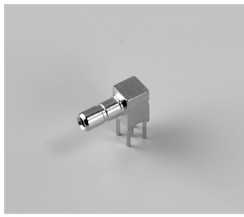


Fig. 1

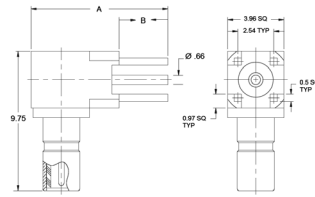
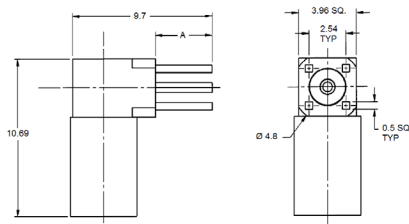


Fig. 2

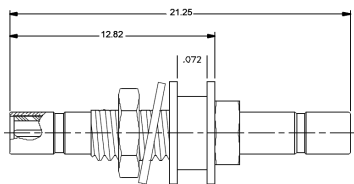
| Part number   | Fig. | Captive center contact | Dimensions (mm) |      | Panel drilling | Finish | Note                         |
|---------------|------|------------------------|-----------------|------|----------------|--------|------------------------------|
|               |      |                        | A               | B    |                |        |                              |
| 7210-1511-000 | 1    | yes                    | 9.65            | 3.93 | P02            | Gold   | No stand off                 |
| 7210-1511-012 |      |                        | 6.27            | 0.0  |                |        | Pretinned legs, no stand off |
| 7210-1511-015 |      |                        | 8.17            | 2.46 |                |        | SMT version, no stand off    |
| 7210-1511-019 |      |                        | 9.65            | 3.42 |                |        | No standoff                  |
| 7210-1511-040 | 2    |                        | 9.65            | 3.42 | P02            | Gold   | Pretinned legs               |
| 7210-1511-050 |      |                        | 8.9             | 3.2  |                |        |                              |
| R203 665 000  |      |                        |                 |      |                |        | Body 3.5 □                   |

**RIGHT ANGLE PCB RECEPTACLES (female center contact)**



| Part number   | Captive center contact | Dimensions (mm) |  | Panel drilling | Finish | Note           |
|---------------|------------------------|-----------------|--|----------------|--------|----------------|
|               |                        | A               |  |                |        |                |
| 7242-1511-000 | yes                    | 3.93            |  | P02            | Gold   |                |
| 7242-1511-012 |                        | 3.43            |  |                |        | Pretinned legs |
| 7242-1511-050 |                        |                 |  |                |        | Stand off legs |

**IN SERIES ADAPTERS**



| Part number   | Captive center contact | Panel drilling | Finish | Note                 |
|---------------|------------------------|----------------|--------|----------------------|
| 7222-1501-600 | yes                    | P01            | Gold   | Bulkhead male - male |

## Introduction

SSMC connectors are about a third smaller than SMC. They are mainly used in avionics, missiles, and any limited-space applications that require the security of a threaded coupling.

### GENERAL

- DC - 12 GHz
- Impedance 50Ω
- Screw-on coupling
- Microminiature connectors
- Very low weight and small size

### APPLICATIONS

- Civil avionics
- Military aerospace, missiles

### APPLICABLE STANDARDS

- MIL STD 348A
- IEC 60169-20
- MIL-PRF-39012

## Characteristics

| Test / Characteristics | Values / Remarks |
|------------------------|------------------|
|------------------------|------------------|

### GENERAL

|                   |                  |
|-------------------|------------------|
| Impedance         | 50Ω              |
| Frequency range   | DC - 12.4 GHz    |
| Temperature range | -65°C to + 165°C |

### ELECTRICAL CHARACTERISTICS

|  |  |   |
|--|--|---|
| Insertion loss in dB   | 0.3vF (GHz)  |   |
| RF leakage   | ≤ -55 dB at 1 GHz  |   |
| VSWR max up to 4GHz  | RG 178 cable: 1.20 + 0.02F (GHz)   |   |
| Contact resistance (inner contact)   | Center contact: 5mΩ max. Outer contact: 1mΩ max.   |   |
| Insulation resistance  | 1000MΩ   |   |
| Voltage in VRMS <ul style="list-style-type: none"> <li>• At sea level</li> <li>• At 70,000 ft</li> </ul> | Dielectric withstanding voltage <ul style="list-style-type: none"> <li>≥ 500V</li> <li>100V</li> </ul> | Working voltage <ul style="list-style-type: none"> <li>≤ 250V</li> <li>60V</li> </ul> |

### MECHANICAL CHARACTERISTICS

|                                |                          |
|--------------------------------|--------------------------|
| Cable retention force          | RG174: 50N - RG316: 100N |
| Mating endurance               | 500                      |
| Center contact retention force | ≥ 8N                     |

### ENVIRONMENTAL CHARACTERISTICS

|                       |   |
|-----------------------|---|
| Vibration             | MIL-STD-202, Method 204, Condition D (20g)              |
| Shock                 | MIL-STD-202, Method 213, Condition B, 75g-6ms 1/2 sinus |
| Corrosion (salt mist) | MIL-STD-202, Method 101, Condition B (48h)              |

### MATERIALS AND PLATING

|            | Material         | Plating |
|------------|------------------|---------|
| Body       | Brass            | Gold    |
| Contacts   | Beryllium copper | Gold    |
| Insulators | PTFE             |         |

Plugs

**STRAIGHT PLUGS FOR FLEXIBLE AND SEMI-RIGID CABLES**

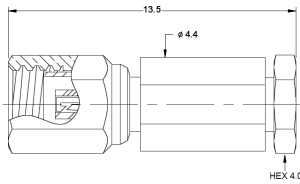


Fig. 1

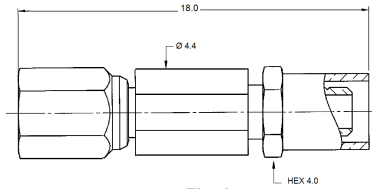
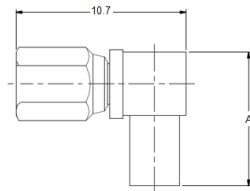


Fig. 2

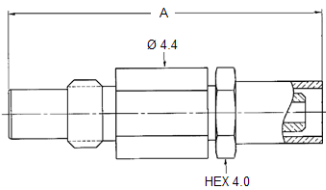
| Cable group   | Part number   | Fig. | Note        | Finish |
|---------------|---------------|------|-------------|--------|
| RG405         | 7002-1542-010 | 1    | Solder type | Gold   |
| M17 / 151     | 7002-1542-011 |      |             |        |
| RG178 / RG196 | 7002-1572-002 | 2    | Crimp type  |        |
| RG174 / RG316 | 7002-1572-003 |      |             |        |
| RD316         | 7002-1572-019 |      |             |        |
| RG178 / RG196 | 7002-1571-002 |      |             |        |
| RG178 / RG196 | 7002-1571-003 |      |             |        |
| RD316         | 7002-1571-019 |      |             |        |

**RIGHT ANGLE PLUGS FOR FLEXIBLE AND SEMI-RIGID CABLES**



| Cable group   | Cable group dia. | Part number   | Dimensions (mm)<br>A | Note        |
|---------------|------------------|---------------|----------------------|-------------|
| RG178 / RG196 | 2/50S            | 7105-1521-002 | 8.4                  | Crimp type  |
| RG174 / RG316 | 2.6/50S          | 7105-1521-003 |                      |             |
| RD316         | 2/50D            | 7105-1521-019 |                      |             |
| RG405         | .085"            | 7105-1561-010 | 8.2                  | Solder type |
| M17 / 151     | .047"            | 7105-1561-011 |                      |             |

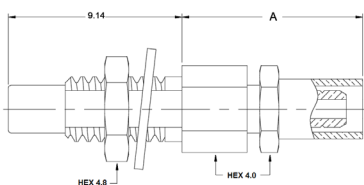
**STRAIGHT JACKS FOR FLEXIBLE AND SEMI-RIGID CABLES**



| Cable group   | Cable group dia. | Part number   | Dimensions (mm)<br>A | Note        |
|---------------|------------------|---------------|----------------------|-------------|
| RG178 / RG196 | 2/50S            | 7101-1571-002 | 16.0                 | Crimp type  |
| RG405         | .085"            | 7101-1541-010 | 8.8                  | Solder type |

Jacks, receptacles and adapters

**BULKHEAD STRAIGHT AND RIGHT ANGLE JACKS FOR FLEXIBLE AND SEMI-RIGID CABLES**



| Cable group   | Cable group dia. | Part number   | Dimensions A(mm) | Panel drilling | Finish | Note        |
|---------------|------------------|---------------|------------------|----------------|--------|-------------|
| RG178 / RG196 | 2/50S            | 7003-1572-002 | 9.7              | P01            | Gold   | Crimp type  |
| RG174 / RG316 | 2.6/50S          | 7003-1572-003 | 9.7              |                |        |             |
| M17 / 151     | .047"            | 7003-1542-011 | 4.8              |                |        | Solder type |

**PCB RECEPTACLES**

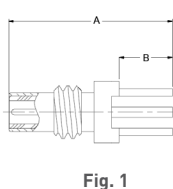


Fig. 1

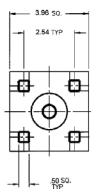


Fig. 2

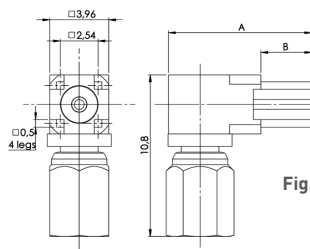
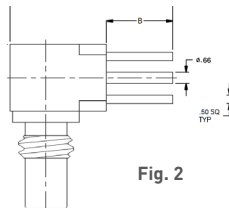
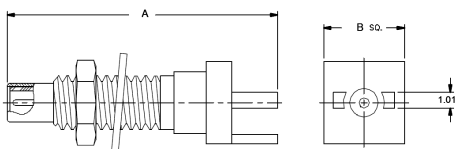


Fig. 3

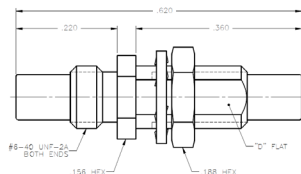
| Part number   | Fig. | Dimensions (mm) |                          | Panel drilling | Finish                | Note                        |                     |
|---------------|------|-----------------|--------------------------|----------------|-----------------------|-----------------------------|---------------------|
|               |      | A               | B                        |                |                       |                             |                     |
| 7009-1511-000 | 1    | 10.6            | 4.0                      | P02            | Gold                  | No stand off                |                     |
| 7009-1511-050 |      | 10.6            | 3.42                     |                |                       | Stand off legs              |                     |
| 7009-1511-004 |      | 7.34            | 0                        |                |                       | Stand off legs, SMT version |                     |
| 7010-1511-000 | 2    | 9.65            | 4.0                      | P02            | Gold, pre-tinned legs | No stand off                |                     |
| 7010-1511-041 |      |                 | 3.42                     |                |                       | Gold                        | Stand off legs      |
| 7010-1511-050 |      |                 |                          |                |                       | Gold, pre-tinned legs       | Male center contact |
| 7042-1511-040 | 3    | 2               | 4.0                      | P02            | Gold                  | No stand off, bulkhead      |                     |
| 7110-1511-000 | 3.42 |                 | Stand off legs, bulkhead |                |                       |                             |                     |

**END LAUNCH BULKHEAD RECEPTACLES**



| Part number   | Dimensions (mm) |      | Finish |
|---------------|-----------------|------|--------|
|               | A               | B    |        |
| 7029-1511-031 | 17.52           | 5.25 | Gold   |
| 7029-1513-005 | 14.85           | 6.35 |        |
| 7029-1513-004 |                 | 3.96 |        |

**IN SERIES ADAPTERS**

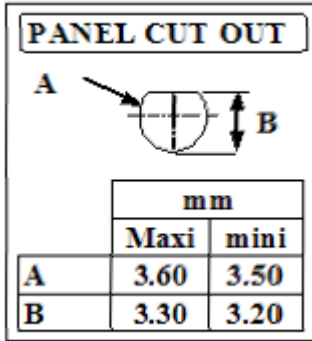


| Part number   | Captive center contact | Panel drilling | Finish | Note               |
|---------------|------------------------|----------------|--------|--------------------|
| 7122-1502-000 | yes                    | P01            | Gold   | Bulkhead male-male |

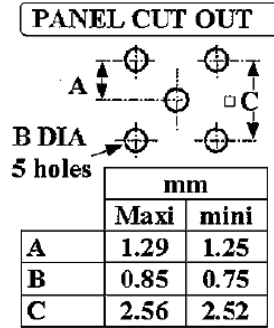
Panel drilling

PANEL DRILLING SSMB/SSMC

P01



P02



SSMB / SSMC

## X-ON Electronics

Largest Supplier of Electrical and Electronic Components

*Click to view similar products for [RF Connectors / Coaxial Connectors](#) category:*

*Click to view products by [Radiall](#) manufacturer:*

Other Similar products are found below :

[8915-1511-000](#) [89674-0827](#) [6001-7071-019](#) [6002-7051-003](#) [6002-7551-202](#) [6059674-1](#) [619550-1](#) [630059-000](#) [M39030/3-01N](#) [6500-7071-046](#) [6769](#) [CX050L2AQ](#) [7002-1541-010](#) [7002-1542-011](#) [7004-1512-000](#) [7009-1511-004](#) [7010-1511-000](#) [7029-1511-060](#) [7101-1541-010](#) [7101-1571-002](#) [7105-1521-002](#) [7145-1521-002](#) [7203-1571-003](#) [7209-1511-011](#) [7210-1511-015](#) [7210-1511-019](#) [73137-5015](#) [73216-2241](#) [73404-2300](#) [7405-1521-005](#) [7405-1521-802](#) [8527](#) [8547](#) [FS11V](#) [877931](#) [8808-1511-001](#) [9074-9513-000](#) [9101-9573-002](#) [910A205F](#) [9130-9573-002](#) [PL11SC-026](#) [PL375-33](#) [PL40-5](#) [PL74C-221](#) [PL75MC-217](#) [PL803-7](#) [1200690078](#) [1-201144-1](#) [R107003010W](#) [R110A172100](#)