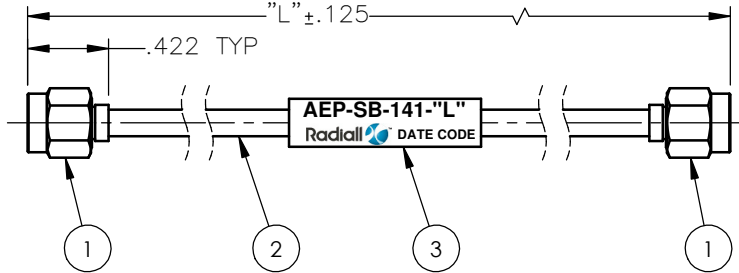




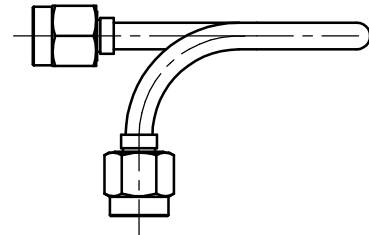
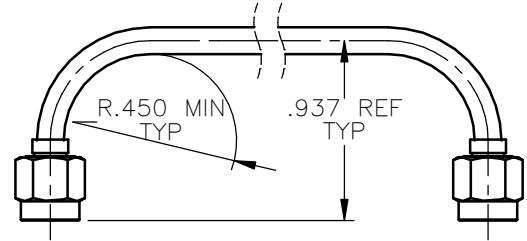
REVISIONS			
REV.	DESCRIPTION	DATE	APPROVED
A	RELEASE	04/28/14	E.M.
B	UPDATED NOTES 2 & 3	06/03/14	E.M.
C	UPDATED ITEM 2 DESCRIPTION	01/22/15	E.M.



**COMPONENTS:**

- ITEM 1: SMA STRAIGHT PLUG
- ITEM 2: COAXIAL, FLEXIBLE, AEP SHORT-BEND 141
- ITEM 3: MARKER, WRAP-AROUND OR HEAT SHRINK SLEEVING MATERIAL

**CONFIGURATION EXAMPLES SHOWN BELOW.**



**NOTES:**

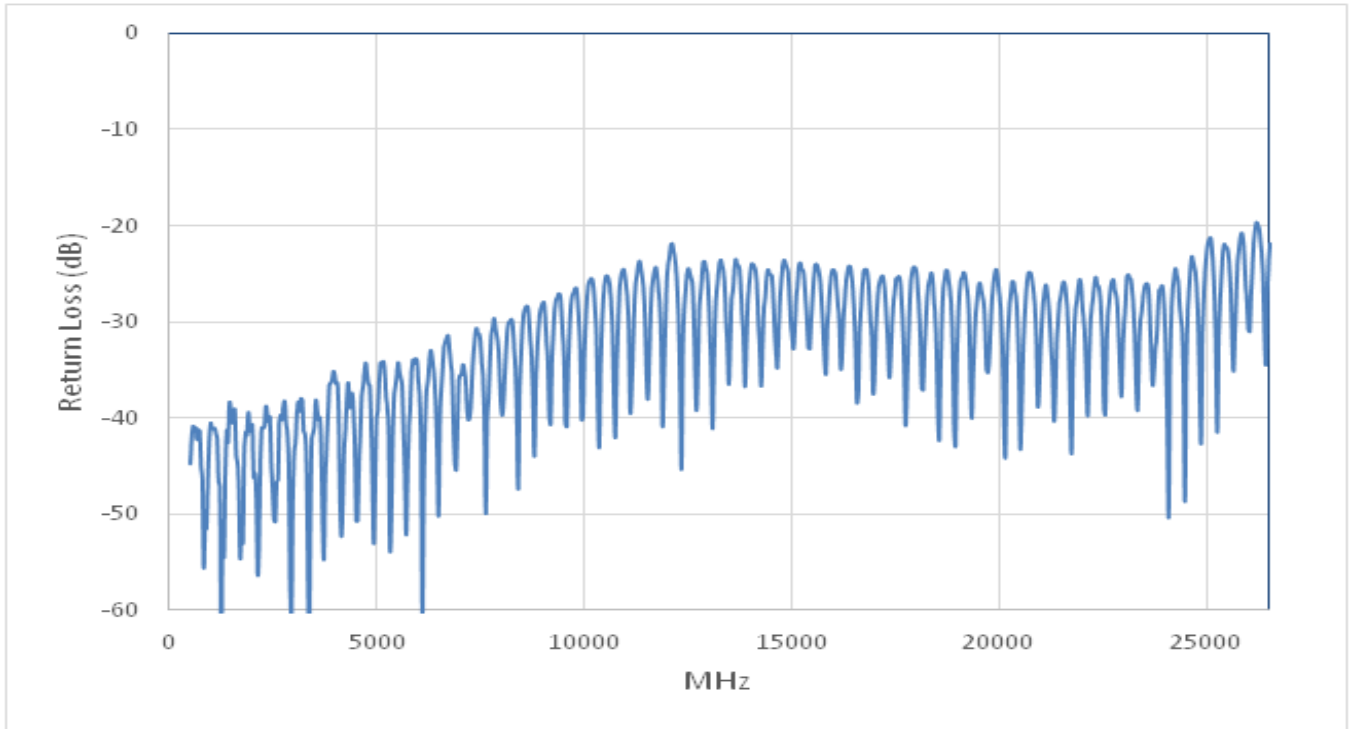
1. "XXXX" REPRESENTS LENGTH "L" IN INCHES.  
EXAMPLE: 81-6201-1200 OR AEP-SB-141-1200 INDICATES 12 INCHES OVERALL LENGTH.
2. MECHANICAL CHARACTERISTICS:
  - PULL STRENGTH: 15 LBS.
  - NUMBER OF FLEXURES : 1 AT R.450" AND 5 AT R.900".
3. ENVIROMENTAL CHARACTERISTICS:
  - OPERATING TEMPERATURE RANGE: -55 ° C TO +125 °C.
  - SHOCK: PER MIL-STD-202, METHOD 213B, TEST CONDITION A, 40G, 11ms.
  - VIBRATION: PER MIL-STD-202, METHOD 214A, CONDITION I B, 1-1/2 HOUR/AXIS .
4. ELECTRICAL CHARACTERISTICS:
  - IMPEDANCE: 50 Ohms
  - FREQUENCY: RETURN LOSS AND INSERTION LOSS PER TABLE 1. SEE PAGE 2.
5. NO MARKING ON ASSEMBLY SHORTER THAN 3 INCHES.

UNLESS OTHERWISE SPECIFIED DIMENSIONS ARE IN INCHES TOLERANCES ON	DWN: DATE		Property of Radiall			
	E.M. 08/19/13		This document cannot be reproduced or communicated to a third party without prior written permission of RADIALL.			
DECIMAL	ANGLE	CHKD: DATE	CONTROL DRAWING CABLE ASSEMBLY AEPSHORTBEND-141-XXXX			
		G.L. 08/19/13				
		APVD: DATE	SIZE	FSCM NO.	DWG NO.	REV
		J.M. 08/19/13	A	19505	81-6201-XXXX	C
REFERENCE: EPC11-0-4	MATERIAL & FINISHES: SEE ABOVE		SCALE 1:1		THIRD ANGLE PROJECTION	SHEET 1 OF 2
ORIGINATED: E.M. DATE: 08/19/13						



81-6201-XXXX

AEPSHORTBEND-141-1200	1200 (12")	- 20.83	- 19.08	- 16.54	- 14.72	0.33	0.75	0.93	1.17
AEPSHORTBEND-141-1100	1100 (11")	- 20.83	- 19.08	- 16.54	- 14.72	0.31	0.71	0.88	1.11
AEPSHORTBEND-141-1000	1000 (10")	- 20.83	- 19.08	- 16.54	- 14.72	0.30	0.66	0.83	1.05
AEPSHORTBEND-141-0900	0900 (9")	- 20.83	- 19.08	- 16.54	- 14.72	0.28	0.62	0.78	0.99
AEPSHORTBEND-141-0800	0800 (8")	- 20.83	- 19.08	- 16.54	- 14.72	0.27	0.58	0.73	0.92
AEPSHORTBEND-141-0700	0700 (7")	- 20.83	- 19.08	- 16.54	- 14.72	0.25	0.54	0.68	0.86
AEPSHORTBEND-141-0600	0600 (6")	- 20.83	- 19.08	- 16.54	- 14.72	0.23	0.50	0.64	0.80
AEPSHORTBEND-141-0500	0500 (5")	- 20.83	- 19.08	- 16.54	- 14.72	0.22	0.46	0.59	0.74
AEPSHORTBEND-141-0450	0450 (4.5")	- 20.83	- 19.08	- 16.54	- 14.72	0.21	0.44	0.56	0.71
AEPSHORTBEND-141-0400	0400 (4")	- 20.83	- 19.08	- 16.54	- 14.72	0.20	0.42	0.54	0.68
AEPSHORTBEND-141-0350	0350 (3.5")	- 20.83	- 19.08	- 16.54	- 14.72	0.20	0.40	0.51	0.65
AEPSHORTBEND-141-0300	0300 (3")	- 20.83	- 19.08	- 16.54	- 14.72	0.19	0.38	0.49	0.62
AEPSHORTBEND-141-0250	0250 (2.5")	- 20.83	- 19.08	- 16.54	- 14.72	0.18	0.36	0.46	0.59
ASSY. NO.	DIM. "L"	2.0 GHz	12.4 GHz	18 GHz	26.5 GHz	2.0 GHz	12.4 GHz	18 GHz	26.5 GHz
		RETURN LOSS, dB MAX				INSERTION LOSS, dB MAX AT 20 °C			

TABLE 1.



TYPICAL RETURN LOSS ON 12 INCH CABLE ASSEMBLY SHOWN ABOVE.

UNLESS OTHERWISE SPECIFIED DIMENSIONS ARE IN INCHES TOLERANCES ON	DWN:	DATE		Property of Radiall			
	E.M.	08/19/13		This document cannot be reproduced or communicated to a third party without prior written permission of RADIALL.			
DECIMAL	ANGLE	CHKD:	DATE	CONTROL DRAWING CABLE ASSEMBLY AEPSHORTBEND-141-XXXX			
		G.L.	08/19/13				
		APVD:	DATE	SIZE	FSCM NO.	DWG NO.	REV
		J.M.	08/19/13	A	19505	81-6201-XXXX	C
REFERENCE: EPC11-0-4	MATERIAL & FINISHES:		SCALE	1:1		THIRD ANGLE PROJECTION	SHEET 2 OF 2
ORIGINATED: E.M. DATE: 08/19/13							

81-6201-XXXX

## X-ON Electronics

Largest Supplier of Electrical and Electronic Components

*Click to view similar products for [RF Cable Assemblies](#) category:*

*Click to view products by [Radiall](#) manufacturer:*

Other Similar products are found below :

[73-6352-10](#) [73-6353-3](#) [R285001001](#) [R288940004](#) [145111-05-12.00](#) [1661-C-24](#) [1801171170914KE](#) [24P104C24J1-012](#) [24P104C24P1-006](#)  
[24P104C24P1-018](#) [24P204C24J1-003](#) [172-2150-EX](#) [1800920920914PJ](#) [FCB-3030-ALT](#) [21117-046](#) [21117-050](#) [PCX-24-50](#) [24P103C24P2-](#)  
[003](#) [25P203C25P2-003](#) [R284008001](#) [R285001021](#) [R285426000](#) [R288940003](#) [4814-BB-24](#) [5260-72](#) [JT2N1-CL1-1F](#) [DLP-COAX1](#) [4814-K-](#)  
[48](#) [115101-09-06.00](#) [CCNTN2-MM-LL335-26](#) [73-6351-25](#) [73-6352-3](#) [73-6353-25](#) [1800920920610PJ](#) [GD0BQ0BQ024.0](#) [1-3636-600-5210](#)  
[TL8A-11SMA-11SMA-01500-51](#) [R284C0351060](#) [R288940009](#) [R284C0351028](#) [R288940002](#) [9702-1SL-1](#) [PT82NSMA](#) [73-6353-10](#)  
[R285020301W](#) [PCX-18-50](#) [Minibend-9](#) [Minibend-4](#) [BNC TO SMA Cable](#) [MIKROE-274](#)