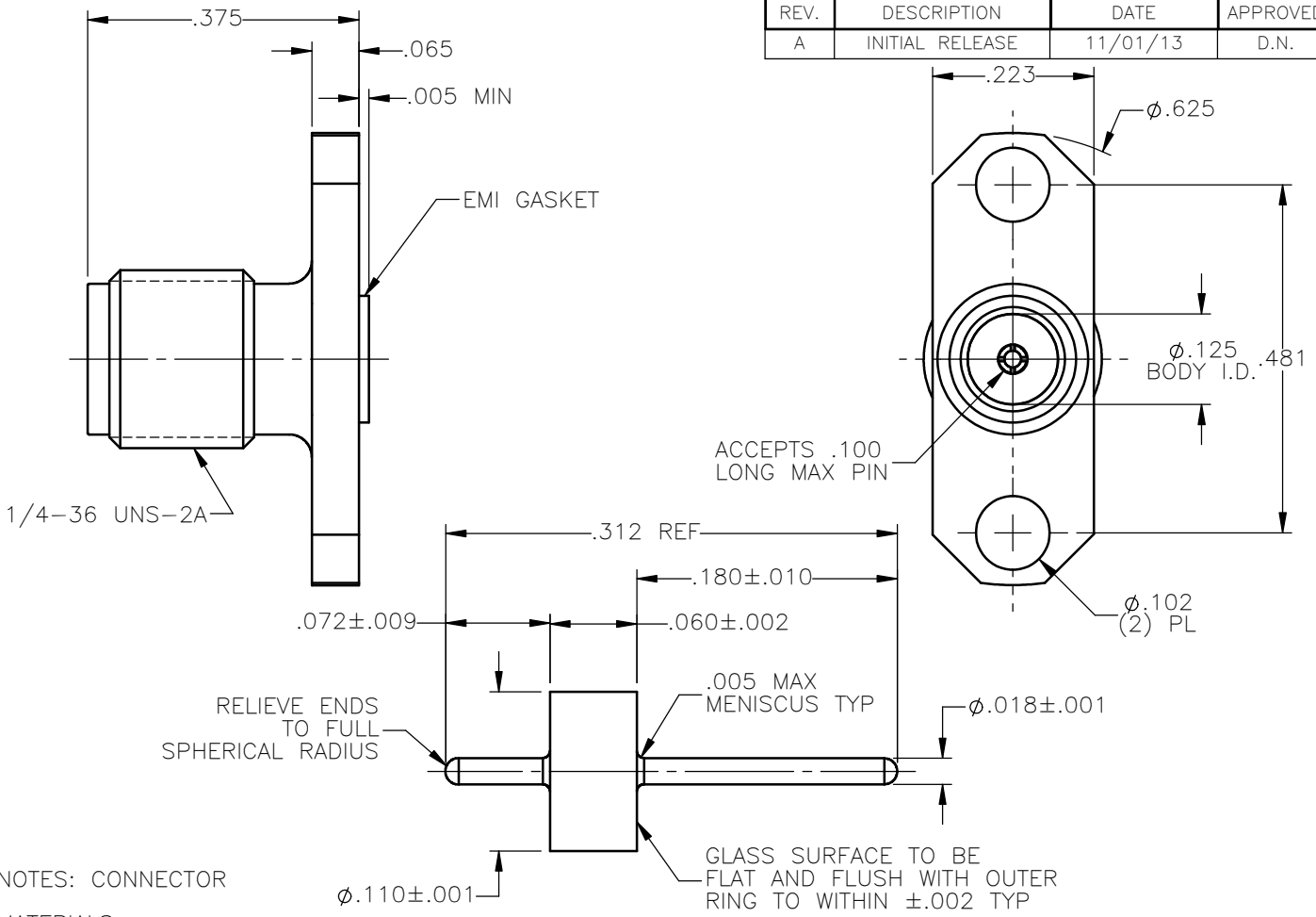


REVISIONS			
REV.	DESCRIPTION	DATE	APPROVED
A	INITIAL RELEASE	11/01/13	D.N.



NOTES: CONNECTOR

MATERIALS:



1. BODY = STAINLESS STEEL PER ASTM A582, ALLOY 303, CONDITION "A".
2. INSULATOR = VIRGIN WHITE TEFLON PER ASTM D1710, GRADE 1, TYPE I, CLASS "B".
3. CONTACT = BERYLLIUM COPPER PER ASTM B196, ALLOY C17300, TEMPER TD04.
4. EMI GASKET = CONDUCTIVE SILVER/SILICONE ELASTOMERS 70 DUROMETER.

FINISHES:

1. BODY = PASSIVATE PER QQ-P-35, TYPE VI.
2. CONTACT = GOLD PLATE PER MIL-G-45204, TYPE II, CLASS 1, GRADE C, OVER .00010 TO .00020 STRESS FREE SULFAMATE NICKEL PER QQ-N-290.

NOTES: GLASS SEAL

1. MATERIALS:
 OUTER RING AND PIN = KOVAR
 GLASS BEAD = CORNING 7070
2. FINISH:
 OUTER RING AND PIN = GOLD PLATE PER MIL-G-45204, TYPE II, GRADE C, CLASS I, OVER NICKEL PER MIL-C-26074, CLASS I, OVER COPPER PER MIL-C-14550.
3. PIN AND OUTER RING TO BE CONCENTRIC WITHIN .003 T.I.R.
4. GLASS SURFACES TO BE FREE OF CRAZING OR HAIRLINE CRACKS UNDER FOUR POWER MAGNIFICATION.
5. ASSEMBLY TO HAVE LEAK RATE LESS THAN 1×10^{-8} cc/sec.
6. UNLESS OTHERWISE SPECIFIED, BREAK SHARP EDGES .003 MAX.

UNLESS OTHERWISE SPECIFIED DIMENSIONS ARE IN INCHES TOLERANCES ON	DWN: DATE		Property of Radiall				
	D.N. DATE		This document cannot be reproduced or communicated to a third party without prior written permission of RADIALL.				
	CHKD: DATE		SMA STRAIGHT JACK 2 HOLE FLANGE MOUNT HERMETIC SEAL LAUNCHER				
DECIMAL	ANGLE	J.S. DATE	SIZE		FSCM NO.	DWG NO.	REV
		J.M. DATE	A	19505	9148-9513-000		A
REFERENCE:	MATERIALS & FINISHES:		SCALE		THIRD ANGLE PROJECTION		SHEET 1 OF 1
ORIGINATED: D.N. DATE: 11/01/13	SEE NOTES		4:1				

9148-9513-000

X-ON Electronics

Largest Supplier of Electrical and Electronic Components

Click to view similar products for [RF Connectors / Coaxial Connectors](#) category:

Click to view products by [Radiall](#) manufacturer:

Other Similar products are found below :

[8915-1511-000](#) [89674-0827](#) [6001-7071-019](#) [6002-7051-003](#) [6002-7551-202](#) [6059674-1](#) [619550-1](#) [630059-000](#) [M39030/3-01N](#) [6500-7071-046](#) [6769](#) [CX050L2AQ](#) [7002-1541-010](#) [7002-1542-011](#) [7004-1512-000](#) [7009-1511-004](#) [7010-1511-000](#) [7029-1511-060](#) [7101-1541-010](#) [7101-1571-002](#) [7145-1521-002](#) [7203-1571-003](#) [7209-1511-011](#) [7210-1511-015](#) [7210-1511-019](#) [73137-5015](#) [73216-2241](#) [73404-2300](#) [7405-1521-005](#) [7405-1521-802](#) [8527](#) [8547](#) [FS11V](#) [877931](#) [9049-9513-000](#) [9074-9513-000](#) [9101-9573-002](#) [910A205F](#) [9130-9573-002](#) [PL11SC-026](#) [PL375-33](#) [PL40-5](#) [PL74C-221](#) [PL75MC-217](#) [PL803-7](#) [980-8666-005](#) [1200690078](#) [1-201144-1](#) [R107003010W](#) [R110A172100](#)