

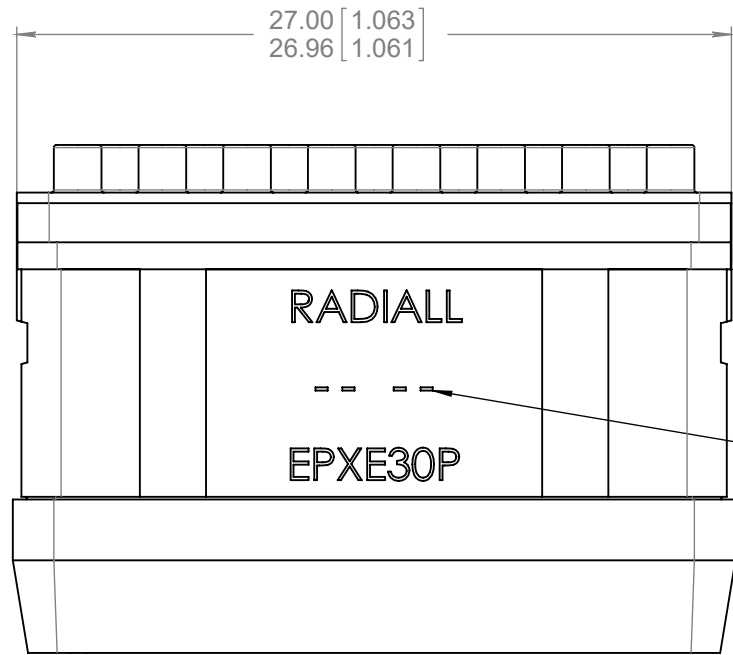
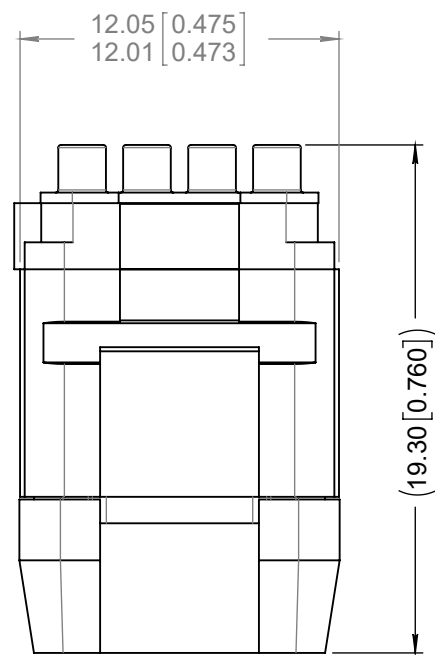
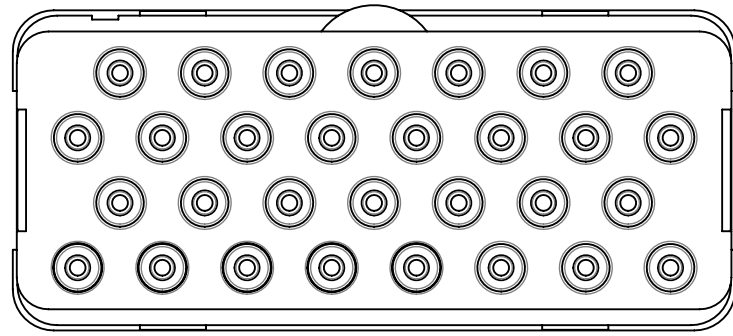
Series
EPX

30 POSITIONS ENVIRONMENTAL INSERT FOR SIZE 20 PIN CONTACTS

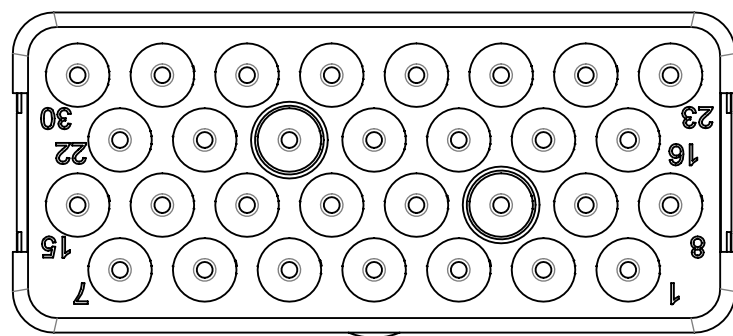
Issue:
Mar 26, 2013

Page
1/1

MATING FACE

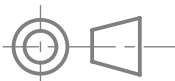


Date code



MATERIALS :
 INSERT : THERMOSETTING FIBERGLASS FILLED OR HIGH GRADE THERMOPLASTIC
 WITH METALLIC RETENTION CLIPS
 INTERFACIAL SEAL : FLUOROSILICONE ELASTOMER

DIMENSIONS : mm (inch are given for information only)



Estimated weight : 6.7 g

This document contains proprietary information and such information shall not be disclosed to any third party for any purpose whatsoever or used for manufacturing purposes without prior written agreement from RADIALL. This information is given as an indication. In the continual goal to improve our products, we reserve the right to make any modifications judged necessary.

4112_9311

CREATION				
	PEN:			
	NOM: MACARI			
	DATE: 14 June, 93	Mar 26, 13	TDS Updated	Ceberio
APPR.:	Jan 10, 03	Modification of marking	Marques	Garcia
	Issue	Revisions	Name	Approved

EPXE30PEN

RADIALL PROPRIETARY INFORMATION

X-ON Electronics

Largest Supplier of Electrical and Electronic Components

Click to view similar products for [Heavy Duty Power Connectors](#) category:

Click to view products by [Radiall](#) manufacturer:

Other Similar products are found below :

[6646058-2](#) [6646137-1](#) [6646138-1](#) [6646940-1](#) [6651091-1](#) [6651525-1](#) [6651529-1](#) [696475-1](#) [702-32-01109](#) [73080255059](#) [73080965046](#)
[7310205040001](#) [765-16-0080B](#) [765-18-0080D](#) [902-77-02113](#) [PS00/A0620/6300](#) [AN0024023](#) [154-42B7WM250](#) [MS3117-14AC](#) [1643543-1](#)
[1766966-1](#) [1791340000](#) [NLDFT-3-BL-L-S120-M40A](#) [NLDFT-N-W-L-C240-M40B](#) [1926015-1](#) [NLS-3-BL-C240-M40B](#) [NLS-N-W-C240-](#)
[M40B](#) [NPS-3-BL-T6](#) [2-1589900-8](#) [9300480317](#) [294-0091-01100](#) [296-0040-01100](#) [1-6609148-0](#) [A32595-0049](#) [1766249-1](#) [19000005132](#)
[1926016-1](#) [1-966831-8](#) [AN0024202](#) [AN0264023](#) [279-0841-10100A](#) [281-0334-00100A](#) [RMSB4](#) [419-2083-301](#) [LCDX4/0-14B-X](#) [075-8519-](#)
[001](#) [078238-1613](#) [07.470.3256.0](#) [09000005288](#) [09140240311](#)