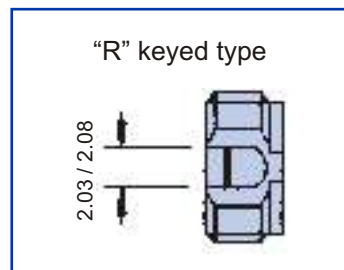
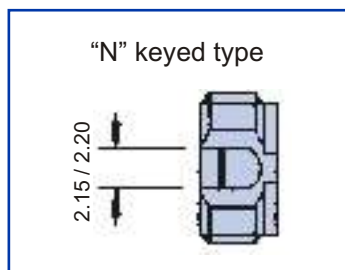


Features



- Alignment sleeve material : zirconia ceramic or phosphor bronze
- "N" keyed type and "R" type available
- 3 versions available : square flange
"D" hole standard 9mm
"D" hole compact 8mm.
- Screw threaded coupling

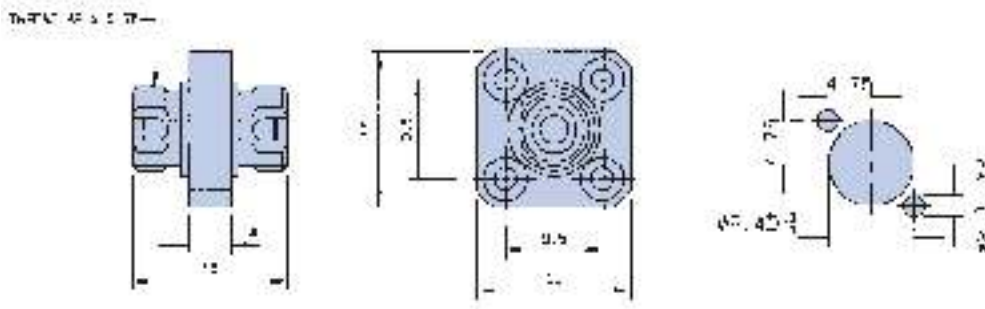
	Alignment sleeve	Packaging	Part numbers	
			Keyed "N"	Keyed "R"
Square flange	Zirconia ceramic	1	F 729 701 000	F 729 701 110
		100	F 729 711 000	F 729 711 110
	Phosphor bronze	1	F 729 701 200	-
		100	F 729 711 200	-
"D" hole standard 9mm Supplied with lock washer and nut for panel mounting	Zirconia ceramic	1	F 729 708 000	F 729 708 110
		100	F 729 718 000	F 729 718 110
	Phosphor bronze	1	F 729 708 200	-
		100	F 729 718 200	-
"D" hole compact 8mm Supplied with lock washer and nut for panel mounting	Zirconia ceramic	1	F 729 702 000	F 729 702 110
		100	F 729 712 000	F 729 712 110
	Phosphor bronze	1	F 729 702 200	-
		100	F 729 712 200	-



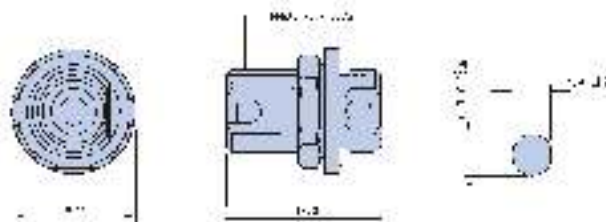
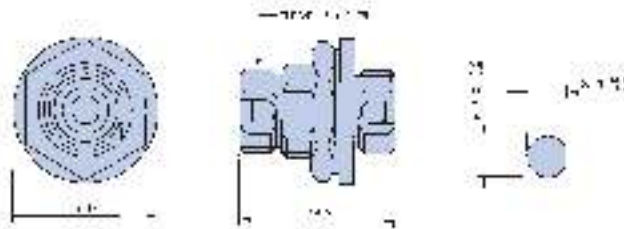
Note : FC connector type N can be inserted into only adaptors of type "N".

Dimensions (mm)

Square flange



“D” hole 9 mm



mm to inch : 0.03937

X-ON Electronics

Largest Supplier of Electrical and Electronic Components

Click to view similar products for [Fibre Optic Connectors](#) category:

Click to view products by [Radiall](#) manufacturer:

Other Similar products are found below :

[0004700001](#) [6100-R](#) [6313](#) [F709034706](#) [F709722200](#) [F709730000](#) [F718183204](#) [F727403500](#) [F727752800](#) [8119](#) [9440F20-27S-190](#) [944-120-6001](#) [9441F10SL-3S](#) [9444W28-21S](#) [9444W36-10S](#) [9446F10SL-4S](#) [9446W20-16S](#) [953-101-5310-P](#) [954-101-57202B](#) [A0270169](#) [12-9122](#) [12-5702](#) [AX101713](#) [AX102420](#) [AX103923](#) [AX104024](#) [AX104193](#) [AX104230](#) [AX104498](#) [AX104562](#) [AX105203-B25](#) [AX105205-S1](#) [EHSC2M](#) [181-011-126](#) [181-011-S](#) [181-057-126](#) [HRFC-R2\(40\)](#) [NKSOPBUY](#) [20500002116](#) [2064996-1](#) [20800001065](#) [2170](#) [9132](#) [2612](#) [2620](#) [9291](#) [9440F16-10S](#) [9440F20-18S](#) [9442W14S-10P](#) [9446F16-10S-190](#)