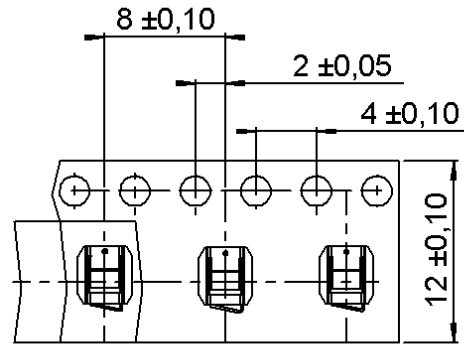
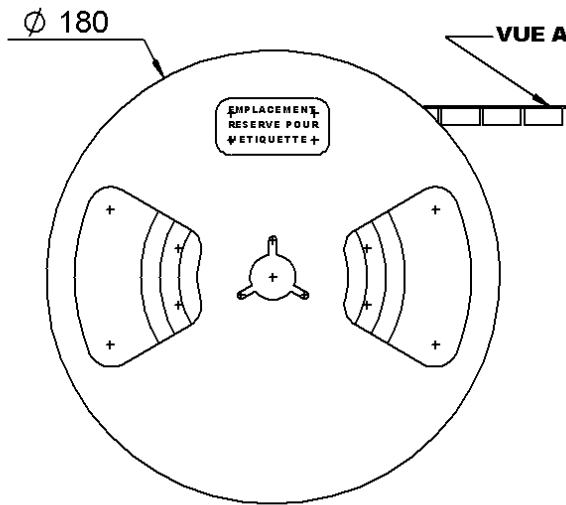


**RIGHT ANGLE H2 RECEPTACLE SMT TYPE**

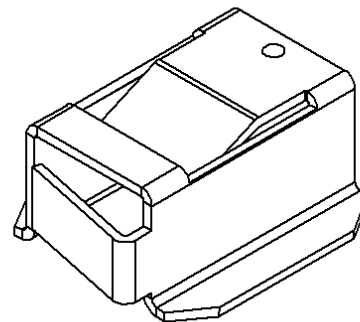
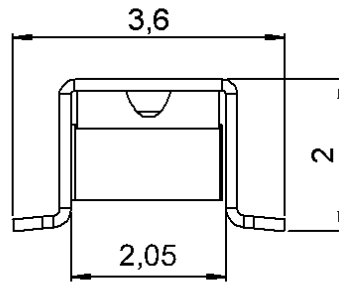
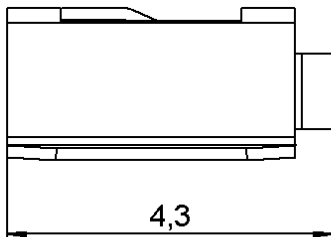
**R107.003.010**


**REEL 100**

Series : UMP



VUE A / VIEW A



 SCALE: 1/1

All dimensions are in mm.



| COMPONENTS     | MATERIALS        | PLATINGS (µm)          |
|----------------|------------------|------------------------|
| BODY           | BERYLLIUM COPPER | GOLD 0.2 OVER NICKEL 2 |
| CENTER CONTACT | -                | -                      |
| OUTER CONTACT  | -                | -                      |
| INSULATOR      | -                | -                      |
| GASKET         | -                | -                      |
| OTHERS PARTS   | -                | -                      |
| -              | -                | -                      |
| -              | -                | -                      |

Issue : 0415 A

In the effort to improve our products, we reserve the right to make changes judged to be necessary.



**RIGHT ANGLE H2 RECEPTACLE SMT TYPE**

**R107.003.010**

**REEL 100**

Series : UMP

**PACKAGING**

**SPECIFICATION**

| Standard   | Unit              | Other             |
|------------|-------------------|-------------------|
| <b>100</b> | <b>'W' option</b> | <b>Contact us</b> |

**ELECTRICAL CHARACTERISTICS**

**ENVIRONMENTAL**

|                                 |               |                             |
|---------------------------------|---------------|-----------------------------|
| Impedance                       |               | <b>50</b> Ω                 |
| Frequency                       |               | <b>0-6</b> GHz              |
| VSWR                            | <b>1.05</b> + | <b>0.030</b> x F(GHz) Maxi  |
| Insertion loss                  |               | <b>NA</b> √F(GHz) dB Maxi   |
| RF leakage                      | - (           | <b>NA</b> - F(GHz)) dB Maxi |
| Voltage rating                  |               | <b>100</b> Veff Maxi        |
| Dielectric withstanding voltage |               | <b>350</b> Veff mini        |
| Insulation resistance           |               | <b>1000</b> MΩ mini         |

|                       |                     |
|-----------------------|---------------------|
| Operating temperature | <b>-40/+125</b> ° C |
| Hermetic seal         | <b>NA</b> Atm.cm3/s |
| Panel leakage         | <b>NA</b>           |

**OTHERS CHARACTERISTICS**

Assembly instruction

Others :

**MECHANICAL CHARACTERISTICS**

|                            |              |             |
|----------------------------|--------------|-------------|
| Center contact retention   |              |             |
| Axial force – Mating end   | <b>NA</b>    | N mini      |
| Axial force – Opposite end | <b>NA</b>    | N mini      |
| Torque                     | <b>NA</b>    | N.cm mini   |
| Recommended torque         |              |             |
| Mating                     | <b>NA</b>    | N.cm        |
| Panel nut                  | <b>NA</b>    | N.cm        |
| Mating life                | <b>100</b>   | Cycles mini |
| Weight                     | <b>0.035</b> | g           |

Issue : 0415 A

In the effort to improve our products, we reserve the right to make changes judged to be necessary.



**RIGHT ANGLE H2 RECEPTACLE SMT TYPE**

**R107.003.010**

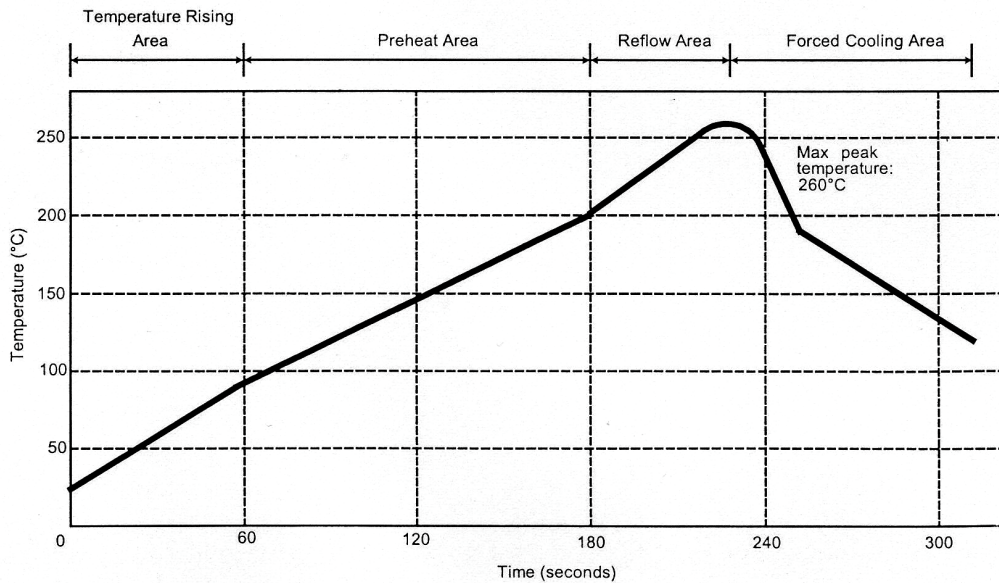
**REEL 100**

Series : UMP

## SOLDER PROCEDURE OF UMP RECEPTACLE IN INDUSTRIAL ENVIRONMENT

1. Deposit solder paste 'Sn Ag4 Cu0.5' on mounting zone by screen printing application. We recommend a low residue flux.  
We advise a thickness of 150 micromm ( 5.850 microinch ). Verify that the edges of the zone are clean.
2. Placement of the receptacle on the mounting zone with an automatic machine of 'pick and place' type.  
A video camera is recommended for positioning of the component.  
Adhesive agents must not be used on the receptacle.
3. This process of soldering has been tested with convection oven.  
Below please find, the typical profile to use.
4. The cleaning of printed circuit boards is not obliged.
5. Verification of solder joints and position of the component by visual inspection.

**NOTE : THE UMP RECEPTACLE AND THE UMP PLUG MUST NOT BE MATED BEFORE COMPLETION OF THIS PROCEDURE.**



| Parmeter                         | Value     | Unit   |
|----------------------------------|-----------|--------|
| Temperature rising Area          | 1 - 4     | °C/sec |
| Max Peak Temperature             | 260       | °C     |
| Max dwell time @260°C            | 10        | sec    |
| Min dwell time @235°C            | 20        | sec    |
| Max dwell time @235°C            | 60        | sec    |
| Temperature drop in cooling Area | -1 to - 4 | °C/sec |
| Max dwell time above 100°C       | 420       | sec    |

**Issue : 0415 A**

In the effort to improve our products, we reserve the right to make changes judged to be necessary.



**RIGHT ANGLE H2 RECEPTACLE SMT TYPE**

**R107.003.010**

**REEL 100**

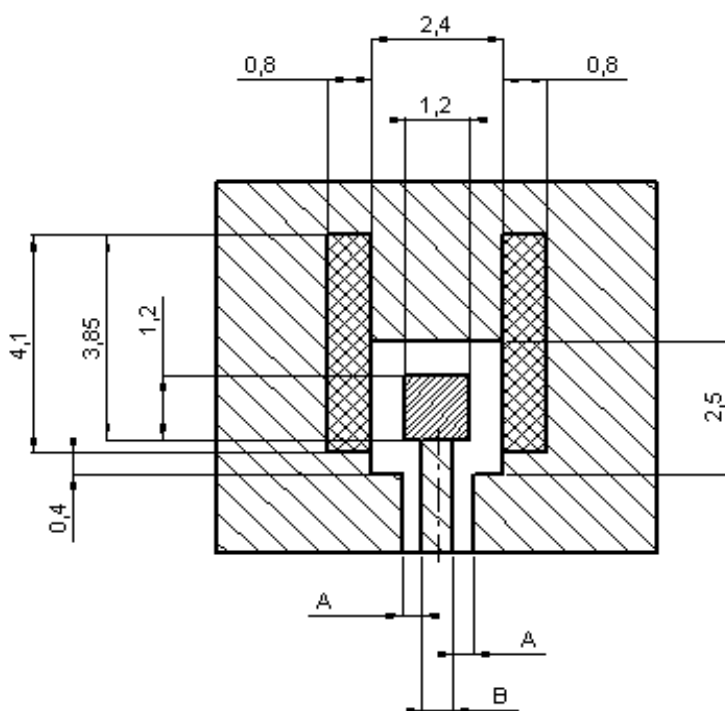
Series : UMP



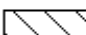
# UMP SERIES INFORMATION

## PCB

### COPLANAR LINE

Ground and signal are on the same side  
The material of PCB is glass is glass-epoxy Composite.



-  Gold over nickel for solder paste
-  Gold over nickel contact area free of any surface contaminant
-  Ground + varnish

**APPLICATION 75Ω**

**WITH B = 0,55mm**

| PCB thickness (mm) | Coplanar ligne A (mm) |
|--------------------|-----------------------|
| 0,8                | 0,57                  |
| 1,0                | 0,45                  |
| 1,2                | 0,41                  |
| 1,6                | 0,37                  |

**APPLICATION 50Ω**

**WITH B = 1,2mm**

| PCB thickness (mm) | Coplanar ligne A (mm) |
|--------------------|-----------------------|
| 0,8                | 0,183                 |
| 1,0                | 0,190                 |
| 1,2                | 0,195                 |
| 1,6                | 0,20                  |

**Issue : 0415 A**

In the effort to improve our products, we reserve the right to make changes judged to be necessary.



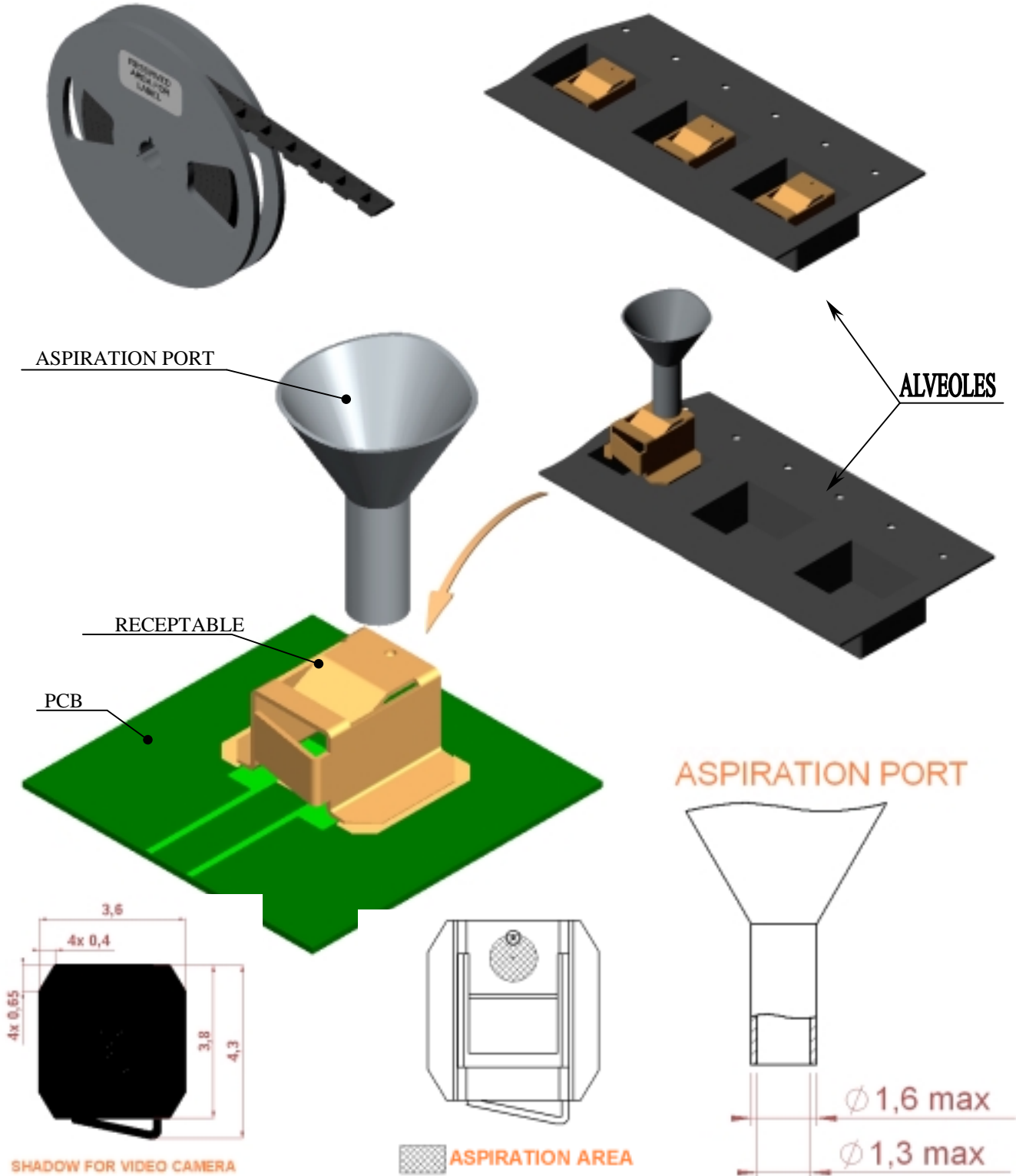
RIGHT ANGLE H2 RECEPTACLE SMT TYPE

**R107.003.010**

REEL 100

Series : UMP

# UMP SERIES INFORMATION



Issue : 0415 A

In the effort to improve our products, we reserve the right to make changes judged to be necessary.



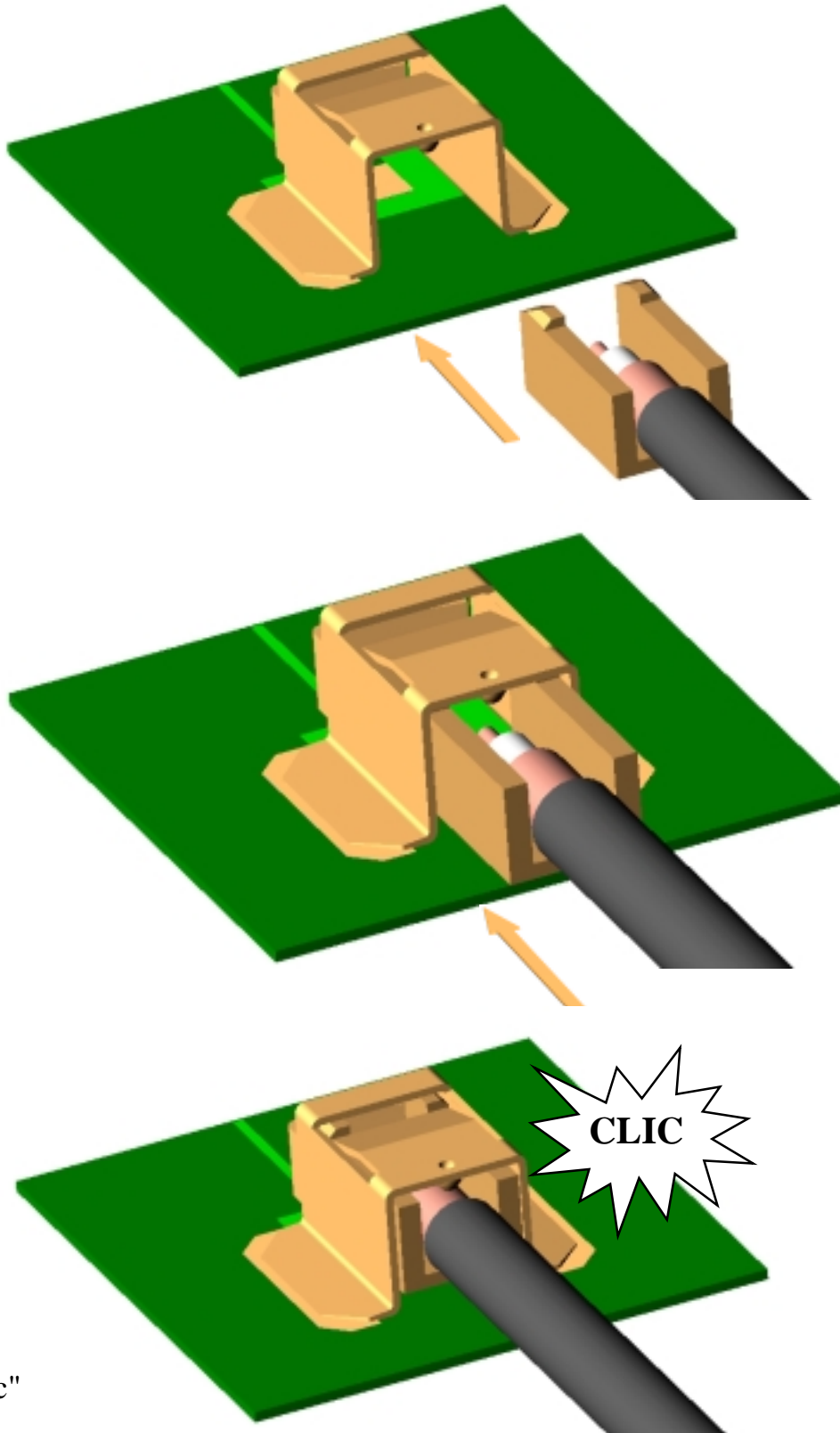
RIGHT ANGLE H2 RECEPTACLE SMT TYPE

**R107.003.010**

REEL 100

Series : UMP

# UMP CONNECTING NOTE



Do not push  
over the "clac"

Issue : 0415 A

In the effort to improve our products, we reserve the right to make changes judged to be necessary.

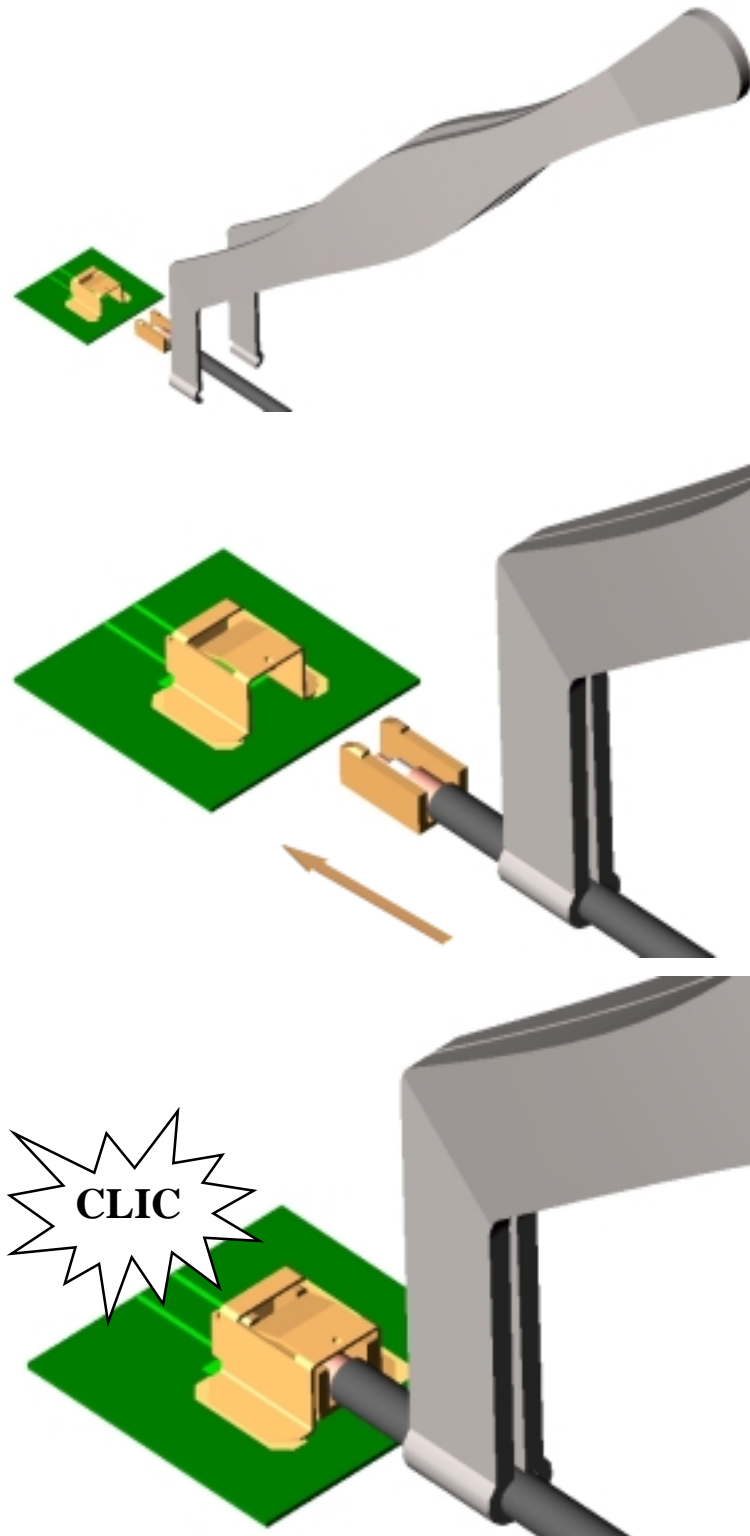
RIGHT ANGLE H2 RECEPTACLE SMT TYPE

**R107.003.010**

REEL 100

Series : UMP

# UMP NOTE CONNECTING



Do not push  
over the « clic »

Issue : 0415 A

In the effort to improve our products, we reserve the right to make changes judged to be necessary.



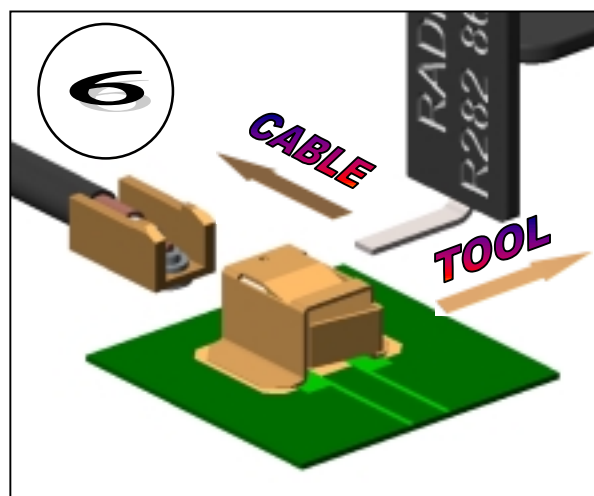
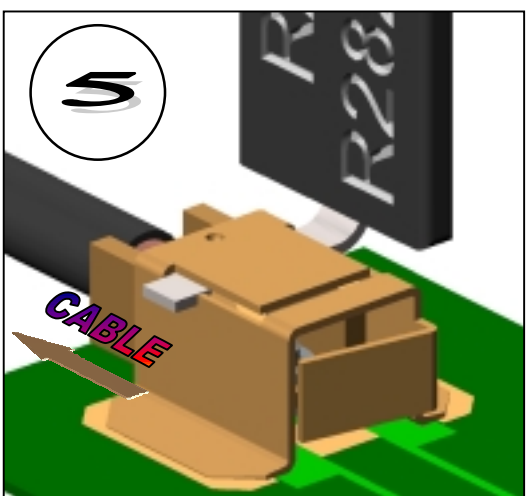
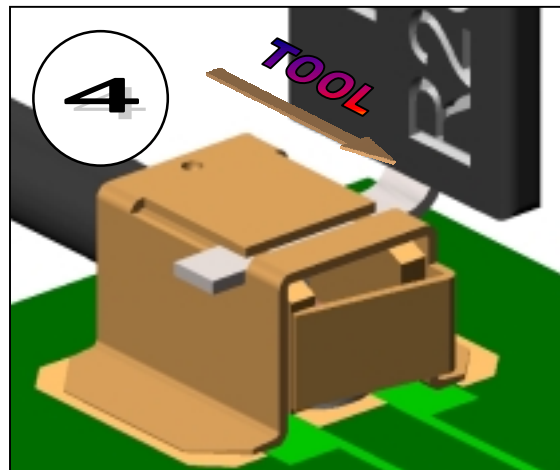
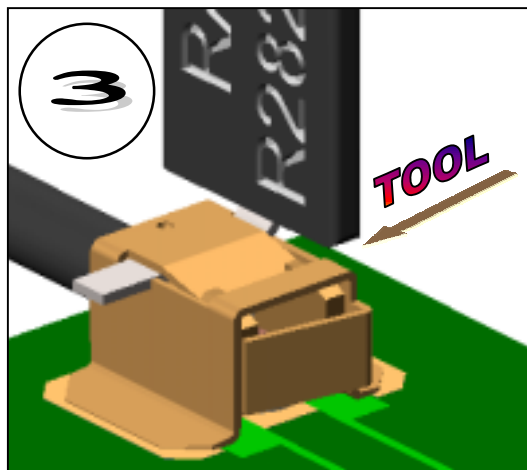
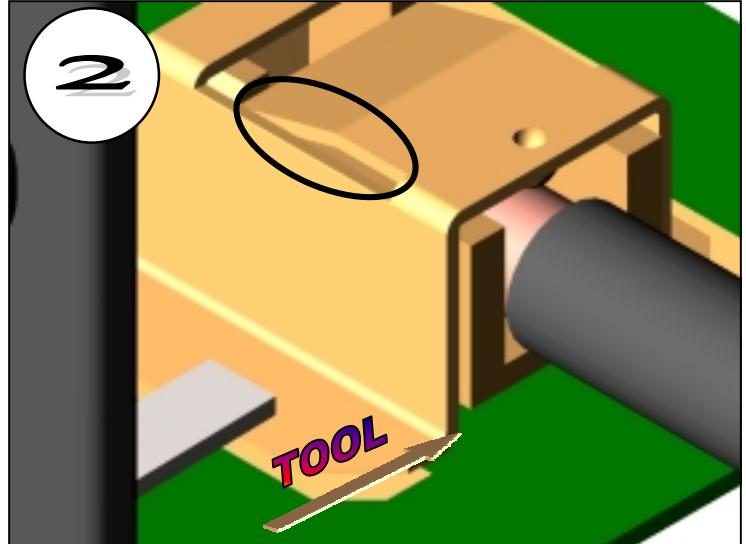
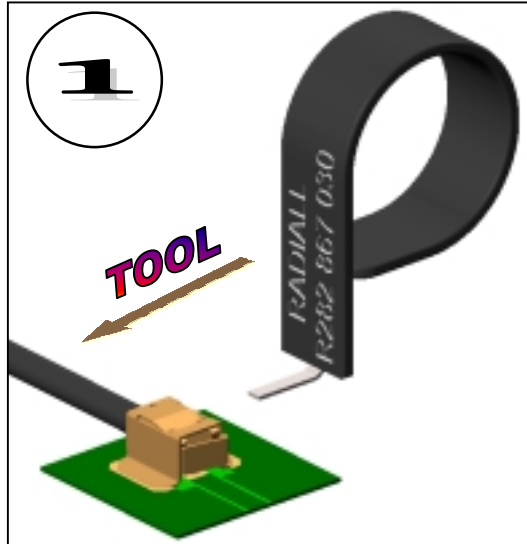
RIGHT ANGLE H2 RECEPTACLE SMT TYPE

**R107.003.010**

REEL 100

Series : UMP

# UMP DISCONNECTING NOTE



Issue : 0415 A

In the effort to improve our products, we reserve the right to make changes judged to be necessary.





## X-ON Electronics

Largest Supplier of Electrical and Electronic Components

*Click to view similar products for [RF Connectors / Coaxial Connectors](#) category:*

*Click to view products by [Radiall](#) manufacturer:*

Other Similar products are found below :

[8915-1511-000](#) [89674-0827](#) [6001-7071-019](#) [6002-7051-003](#) [6002-7551-202](#) [6059674-1](#) [619550-1](#) [630059-000](#) [M39030/3-01N](#) [6500-7071-046](#) [6769](#) [CX050L2AQ](#) [7002-1541-010](#) [7002-1542-011](#) [7004-1512-000](#) [7009-1511-004](#) [7010-1511-000](#) [7029-1511-060](#) [7101-1541-010](#) [7101-1571-002](#) [7145-1521-002](#) [7203-1571-003](#) [7209-1511-011](#) [7210-1511-015](#) [7210-1511-019](#) [73137-5015](#) [73216-2241](#) [73404-2300](#) [7405-1521-005](#) [7405-1521-802](#) [8527](#) [8547](#) [FS11V](#) [877931](#) [9049-9513-000](#) [9074-9513-000](#) [9101-9573-002](#) [910A205F](#) [9130-9573-002](#) [PL11SC-026](#) [PL375-33](#) [PL40-5](#) [PL74C-221](#) [PL75MC-217](#) [PL803-7](#) [980-8666-005](#) [1200690078](#) [1-201144-1](#) [R107003010W](#) [R110A172100](#)