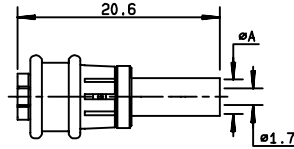


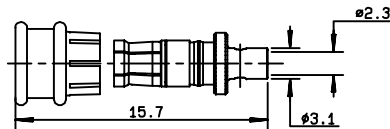
SMB LOCK

STRAIGHT PLUG FULL CRIMP TYPE FOR FLEXIBLE CABLES



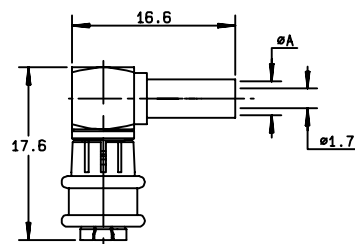
cable type	cable	part number	A	captive center contact
2.6/50/S	RG174-188-316 / SHF 2.7 TU*	R117 082 807	3.25	yes
2.6/50/D	RD316 / SHF 2.7 TD/1*	R117 083 807	3.5	yes
5/50/S	RG 58 - 141 / SHF 142	R117 086 827 •	5.55	yes
5/50/D	RG 142 - 223 - 400	R117 087 827 •	5.55	yes

STRAIGHT PLUG SOLDER TYPE FOR SEMI-RIGID CABLE



cable type	cable	part number	captive center contact
.085"	RG 405/U	R117 053 807	no

RIGHT ANGLE PLUG CRIMP TYPE FOR FLEXIBLE CABLES



cable type	cable	part number	A	captive center contact
2.6/50/S	RG174-188-316 / SHF 2.7 TU*	R117 186 807	3.25	yes
2.6/50/D	RD316 / SHF 2.7 TD/1*	R117 187 807	3.5	yes
5/50/S	RG 58 - 141 / SHF 142	R117 178 827 •	5.55	yes
5/50/D	RG 142 - 223 - 400	R117 179 827 •	5.55	yes

• upon request

* These RADIALL cables are "low loss-low cost" option to RG cables. Their main advantages are : **low loss level, low intermod level, high shielding effectiveness, halogen free.** Part number : SHF 2.7 TU : **C291 999 904** - SHF 2.7 TD/1 : **C 291 999 905** - SHF 142 : **C291 325 290.**

X-ON Electronics

Largest Supplier of Electrical and Electronic Components

Click to view similar products for [RF Connectors](#) / [Coaxial Connectors](#) category:

Click to view products by [Radiall](#) manufacturer:

Other Similar products are found below :

[8915-1511-000](#) [89674-0827](#) [6001-7071-019](#) [6002-7051-003](#) [6002-7551-202](#) [6059674-1](#) [619550-1](#) [630059-000](#) [M39030/3-01N](#) [6500-7071-046](#) [6769](#) [CX050L2AQ](#) [7002-1541-010](#) [7002-1542-011](#) [7004-1512-000](#) [7009-1511-004](#) [7010-1511-000](#) [7029-1511-060](#) [7101-1541-010](#) [7101-1571-002](#) [7145-1521-002](#) [7203-1571-003](#) [7209-1511-011](#) [7210-1511-015](#) [7210-1511-019](#) [73137-5015](#) [73216-2241](#) [73404-2300](#) [7405-1521-005](#) [7405-1521-802](#) [8527](#) [8547](#) [FS11V](#) [877931](#) [8808-1511-001](#) [9074-9513-000](#) [9101-9573-002](#) [910A205F](#) [9130-9573-002](#) [PL11SC-026](#) [PL375-33](#) [PL40-5](#) [PL74C-221](#) [PL75MC-217](#) [PL803-7](#) [1200690078](#) [1-201144-1](#) [R107003010W](#) [R110A172100](#) [R112186000](#)