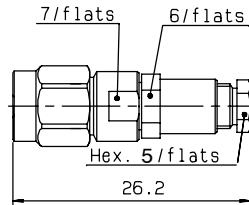
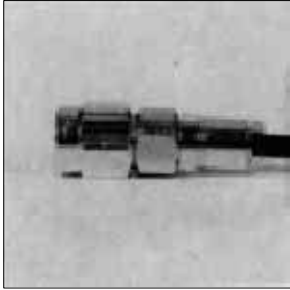




## STRAIGHT PLUGS CLAMP TYPE FOR FLEXIBLE CABLES



Cable group	Part number (gold)	Part number (passivated)	Captive center contact	Assembly
2.6 / 50 / S	<b>R125 091 000</b>	<b>R125 091 001</b>	yes	M01

## STRAIGHT PLUGS CRIMP TYPE FOR FLEXIBLE CABLES

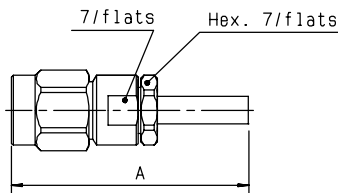
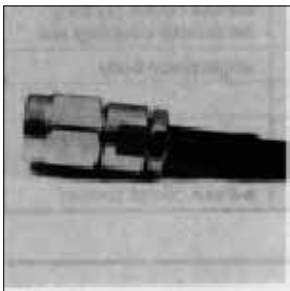


Fig. 1

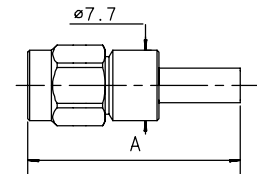


Fig. 2

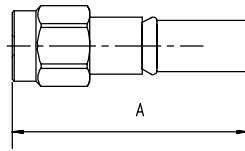


Fig. 3

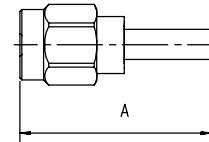


Fig. 4

Cable group	Part number (gold)	Part number (passivated)	Fig.	Dimensions A (mm)	Captive center contact	Assembly	Note
2 / 50 / S	<b>R125 069 000</b>		1	26	yes	M04	
2.6 / 50 / S	<b>R125 071 120</b>	<b>R125 071 121</b>	2	23.4	yes	M05	full crimp type/ single piece body
2.6 / 50 / S	<b>R125 072 000*</b>	<b>R125 072 001*</b>	3	21.1	no	M02	single piece body
2.6 / 50 / S	<b>R125 073 000*</b>	<b>R125 073 001</b>	1	26	yes	M04	
2.6 / 50 / D	<b>R125 072 080*</b>	<b>R125 072 081</b>	3	20.1	no	M02	single piece body
2.6 / 50 / D	<b>R125 072 220</b>	<b>R125 072 221</b>	2	23.4	yes	M05	full crimp type/ single piece body
5 / 50 / S	<b>R125 075 000</b>	<b>R125 075 001</b>	4	24.9	no	M02	single piece body
5 / 50 / S	<b>R125 075 320</b>	<b>R125 075 321</b>	2	26.4	yes	M05	full crimp type/ single piece body
5 / 50 / S		<b>R125 076 201●</b>	3	24.2	no	M02	single piece body/ LMR 200 cable
5 / 50 / D	<b>R125 076 000*</b>	<b>R125 076 001</b>	4	25	no	M02	single piece body
5 / 50 / D	<b>R125 076 120</b>	<b>R125 076 121</b>	2	26.4	yes	M05	full crimp type/ single piece body

● upon request

\* packaging: 100 pieces. For unit packaging, add "W" after the P/N



## STRAIGHT PLUGS SOLDER TYPE FOR SEMI RIGID CABLES

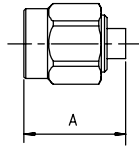
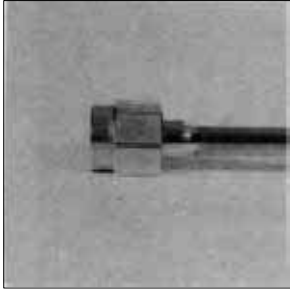


Fig. 1

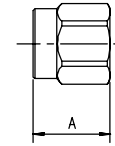


Fig. 2

Cable group	Part number (gold)	Part number (gold/passivated nut)	Fig.	Dimensions A (mm)	Captive center contact	Assembly	Note
.085"	<b>R125 052 000*</b>	<b>R125 052 002</b>	1	11.2	no	M10	single piece body
.085"		<b>R125 052 102●</b>	1	11.2	yes	M12	
.085"	<b>R125 052 500●</b>		1	11.2	no	M12	retractable coupling nut/ single piece body
.141"	<b>R125 054 000</b>	<b>R125 054 002</b>	2	8.5		M09	without center contact
.141"	<b>R125 054 500</b>	<b>R125 054 502●</b>	2	7.5		M09	without center contact/ retractable coupling nut
.141"	<b>R125 055 000*</b>	<b>R125 055 002*</b>	1	11.2	no	M10	single piece body
.141"	<b>R125 055 100●</b>	<b>R125 055 102●</b>	1	11.2	yes	M12	
.141"	<b>R125 055 500</b>		1	11.2	no	M10	retractable coupling nut/ single piece body
.141"	<b>R125 057 000</b>	<b>R125 057 002</b>	1	11.2		M09	without center contact

## RIGHT ANGLE PLUGS CRIMP TYPE FOR FLEXIBLE CABLES

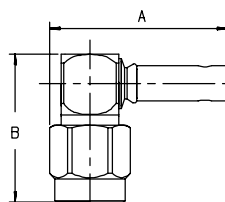


Fig. 1

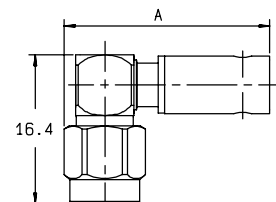


Fig. 2

Cable group	Part number (gold)	Part number (passivated)	Fig.	Dimensions (mm)		Captive center contact	Assembly	Note
				A	B			
2 / 50 / S	<b>R125 170 402</b>		1	19.6	16.85	yes	M11	
2.6 / 50 / S	<b>R125 172 000</b>	<b>R125 172 001*</b>	1	19.6	16.4	yes	M11	single piece body
2.6 / 50 / D	<b>R125 174 000</b>		1	18.6	16.4	yes	M11	
2.6 / 50 / D		<b>R125 174 011</b>	1	18.6	16.85	yes	M11	
5 / 50 / S	<b>R125 175 000</b>	<b>R125 175 001</b>	2	21.8		yes	M11	single piece body
5 / 50 / D	<b>R125 176 000</b>	<b>R125 176 001</b>	2	21.8		yes	M11	

● upon request

\* packaging: 100 pieces. For unit packaging, add "W" after the P/N

## X-ON Electronics

Largest Supplier of Electrical and Electronic Components

*Click to view similar products for [RF Connectors / Coaxial Connectors](#) category:*

*Click to view products by [Radiall](#) manufacturer:*

Other Similar products are found below :

[8915-1511-000](#) [89674-0827](#) [6001-7071-019](#) [6002-7051-003](#) [6002-7551-202](#) [6059674-1](#) [619550-1](#) [630059-000](#) [M39030/3-01N](#) [6500-7071-046](#) [6769](#) [CX050L2AQ](#) [7002-1541-010](#) [7002-1542-011](#) [7004-1512-000](#) [7009-1511-004](#) [7010-1511-000](#) [7029-1511-060](#) [7101-1541-010](#) [7101-1571-002](#) [7145-1521-002](#) [7203-1571-003](#) [7209-1511-011](#) [7210-1511-015](#) [7210-1511-019](#) [73137-5015](#) [73216-2241](#) [73404-2300](#) [7405-1521-005](#) [7405-1521-802](#) [8527](#) [8547](#) [FS11V](#) [877931](#) [9049-9513-000](#) [9074-9513-000](#) [9101-9573-002](#) [910A205F](#) [9130-9573-002](#) [PL11SC-026](#) [PL375-33](#) [PL40-5](#) [PL74C-221](#) [PL75MC-217](#) [PL803-7](#) [980-8666-005](#) [1200690078](#) [1-201144-1](#) [R107003010W](#) [R110A172100](#)