

IN SERIES ADAPTERS

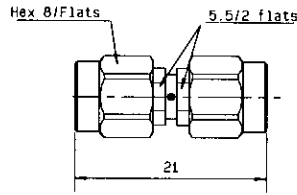


Fig. 1

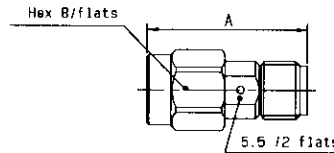


Fig. 2

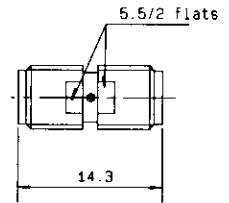


Fig. 3

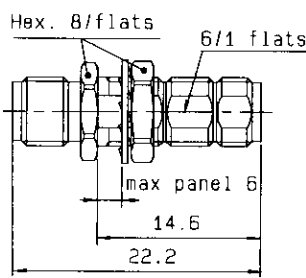


Fig. 4

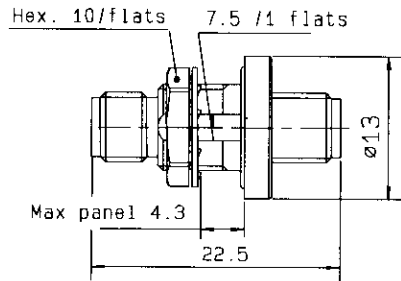


Fig. 5

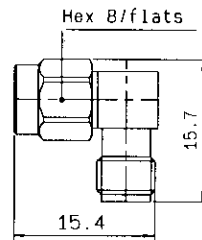


Fig. 6

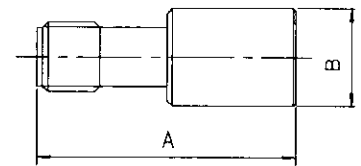


Fig. 7

Part number (gold)	Part number (passivated)	Fig.	Captive center contact	Dimensions (mm)		Cut out	Note
				A	B		
R125 703 000	R125 703 001	1	yes				male-male
R125 704 000	R125 704 001	2	yes	17.5			male-female
R125 705 000*	R125 705 001	3	yes				female-female
R125 720 000	R125 720 001	4	yes			P03	bulkhead female-female
R125 753 000	R125 753 001	5	yes			P12	bulkhead hermetically sealed female-female
R125 771 000	R125 771 001*	6	yes				right angle male-female
	R125 791 501	7	yes	23.3	8.9		PUSH-ON** male
	R125 792 501	7	yes	24.8	11		PUSH-ON** female

\*\* PUSH-ON adapter, see our catalog D1036DE

TEE IN SERIES ADAPTERS

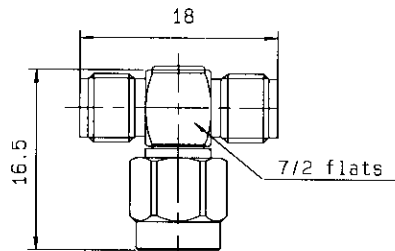
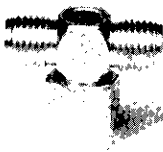


Fig. 1

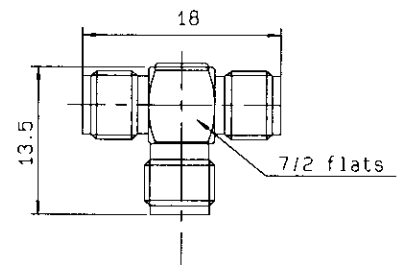


Fig. 2

Part number (gold)	Part number (passivated)	Fig.	Captive center contact
R125 780 000	R125 780 001	1	yes
R125 781 000	R125 781 001	2	yes

\* packaging: 100 pieces. For unit packaging, add "W" after the P/N

## X-ON Electronics

Largest Supplier of Electrical and Electronic Components

*Click to view similar products for [RF Adapters - In Series](#) category:*

*Click to view products by [Radiall](#) manufacturer:*

Other Similar products are found below :

[5916-1103-603](#) [5919-1503-000](#) [651A505](#) [82-5552](#) [9030-9523-502](#) [PN2C](#) [A0407000](#) [R114703000W](#) [R125771001](#) [R127871001](#)  
[R141710000W](#) [R141723161](#) [R141730000](#) [R143730700](#) [R143770000](#) [R161703000W](#) [R161753000W](#) [R161791530W](#) [R201705000](#)  
[R222705200](#) [R222M40010W](#) [R223703180](#) [R316754000](#) [R405006000](#) [R443162000](#) [AD78TL](#) [HRM-513S](#) [1996352-2](#) [2157155-1](#) [252169-75](#)  
[AD158](#) [2101130-1](#) [252186](#) [R114704000W](#) [R114720000W](#) [R125705001](#) [R125705701](#) [R125771000](#) [R125771001W](#) [R127704001](#)  
[R127.870.001](#) [R127872001](#) [R141717000](#) [R142710000](#) [R142723000](#) [R143703000](#) [R143704000](#) [R143705700](#) [R161771000W](#) [R176754000](#)