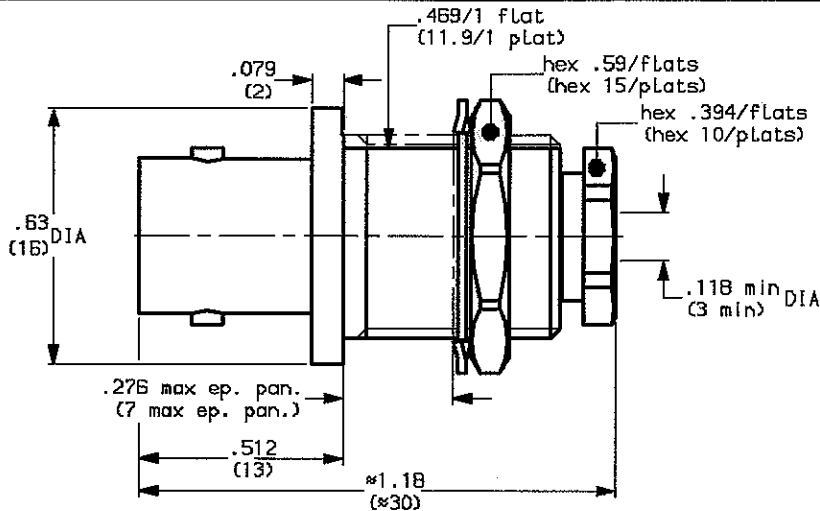


STRAIGHT BULKHEAD CABLE JACK-CLAMP TYPE  
CABLE 2.6/50+75

PEN DEP91.R141.000



WEIGHT oz ( g)

CABLES :RG174-KX22-RG179

	MM		INCH	
	mini	maxi	mini	maxi
A	12.7	12.8	.5	.504
C	12	12.1	.472	.476

CHARACTERISTICS

NOMINAL IMPEDANCE	50 $\Omega$
FREQUENCY RANGE	0-4 GHz
TEMPERATURE RATING	-65/+165 °C
VSWR	AD Max
RF INSERTION LOSS	0.11 $\sqrt{F}$ dB Maxi
VOLTAGE RATING	500 Vrms Maxi
DIELECTRIC WITHSTANDING VOLTAGE	1500 Vrms mini
INSULATION RESISTANCE	5000 Mo mini
HERMETIC SEAL	NA cc/s Atm.cm3/s
LEAKAGE (pressurized only)	NA psi MPa
-	-
-	-

STANDARDISATION	CECC	22120/BNC
	CEI	169-B/BNC
	MIL	STD348-301/BNC
	NF	C93-564/KBN

CABLE RETENTION	24.75 Lb mini 110 N
CENTER CONTACT RETENTION	
Axial force - mating end	6.075 Lb mini 27 N
Axial force - opposite end	6.075 Lb mini 27 N
Torque (Min)	NA Inch.oz cm.N
RECOMMENDED TORQUES	
Mating	NA inch.Lb cm.N
Panel nut	32.782 inch.Lb 370 cm.N
Clamp nut	13.27 inch.Lb 150 cm.N

CONSTRUCTION

CONNECTOR PARTS	MATERIALS	FINISH
BODY	BRASS	NICKEL
OUTER CONTACT	BRASS	NICKEL
CENTER CONTACT	BERYLLIUM COPPER	GOLD
INSULATORS	PTFE	-
GASKET	SILICON	-
SCREW NUT	BRASS	NICKEL
COUPLING NUT	BRASS	NICKEL
-	-	-
-	-	-

ISSUE	REVISION No	DESCRIPTION	BY	DATE
.	.	.	.	.
.	.	.	.	.
.	.	.	.	.
.	.	.	.	.

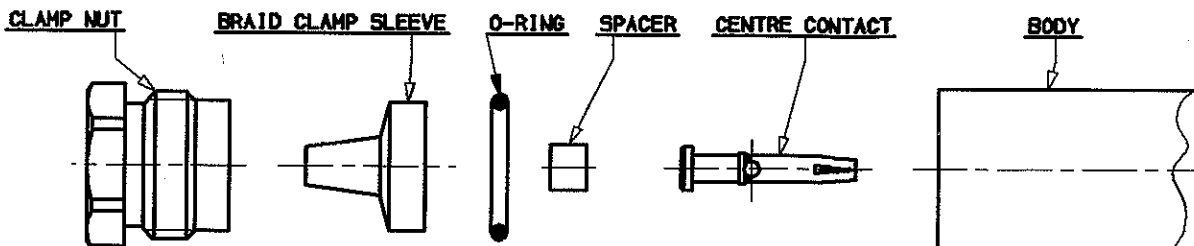
Initiated on 27-FEB-91

The information given here is subject to change without notice. Design changes may be in order to improve the product.

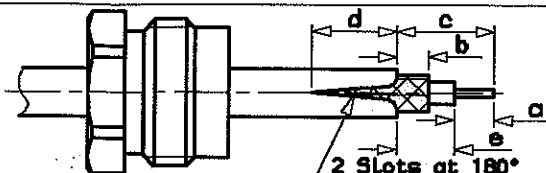


Superseded on

STRAIGHT BULKHEAD CABLE JACK-CLAMP TYPE  
CABLE 2.6/50+75

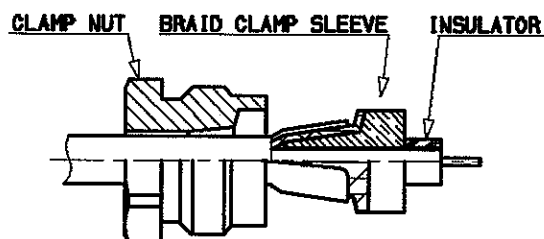


- ①
- 1-1 Slide clamp nut onto the cable .
  - 1-2 Strip the cable .
  - 1-3 Cut the jacket ( 2 Slots )  
apart if necessary.

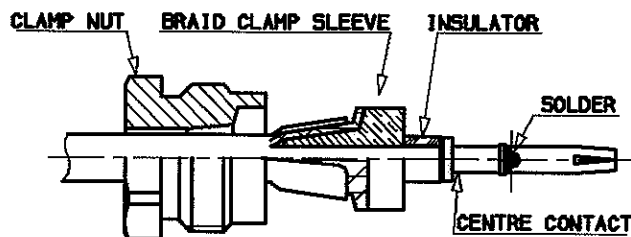


Stripping	a	b	c	d	e
inch	.157	.079	.354	.078	.197
mm	4	2	9	2	5

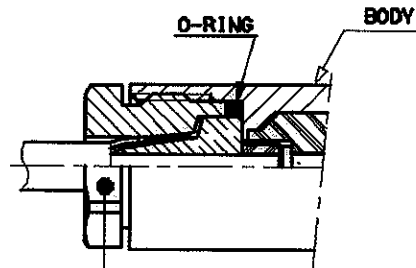
- ②
- 2-1 Slide the clamp braid sleeve between  
cable dielectric and braid .
  - 2-2 Cut the braid flush with the clamp  
braid sleeve .
  - 2-3 Slide the spacer .



- ③
- 3-1 Solder the cable inner conductor  
into centre contact .
  - 3-2 Slide the back nut over  
the clamp assembly .



- ④
- 4-1 Screw sub-assembly into the connector  
body .  
recommended coupling torque  
(3.27 in.lb )



Hex. .394 / flats

ISSUE	REVISION No	DESCRIPTION	BY	DATE
.	.	.	.	.
.	.	.	.	.
.	.	.	.	.

Initiated on 27 Feb 91

The information given here is subject to change without notice. Design changes may be made in order to improve the product.



Superseded on \_\_\_\_\_

## X-ON Electronics

Largest Supplier of Electrical and Electronic Components

*Click to view similar products for [RF Connectors / Coaxial Connectors](#) category:*

*Click to view products by [Radiall](#) manufacturer:*

Other Similar products are found below :

[8915-1511-000](#) [89674-0827](#) [6001-7071-019](#) [6002-7051-003](#) [6002-7551-202](#) [6059674-1](#) [619550-1](#) [630059-000](#) [M39030/3-01N](#) [6500-7071-046](#) [6769](#) [CX050L2AQ](#) [7002-1541-010](#) [7002-1542-011](#) [7004-1512-000](#) [7009-1511-004](#) [7010-1511-000](#) [7029-1511-060](#) [7101-1541-010](#) [7101-1571-002](#) [7145-1521-002](#) [7203-1571-003](#) [7209-1511-011](#) [7210-1511-015](#) [7210-1511-019](#) [73137-5015](#) [73216-2241](#) [73404-2300](#) [7405-1521-005](#) [7405-1521-802](#) [8527](#) [8547](#) [FS11V](#) [877931](#) [8808-1511-001](#) [9049-9513-000](#) [9074-9513-000](#) [9101-9573-002](#) [910A205F](#) [9130-9573-002](#) [PL11SC-026](#) [PL375-33](#) [PL40-5](#) [PL74C-221](#) [PL75MC-217](#) [PL803-7](#) [980-8666-005](#) [1200690078](#) [1-201144-1](#) [R107003010W](#)