



BNC/BNC 75 HDTV/BNC-TRX

R141/R142/R266

Contents**BNC**

| | |
|-----------------------|--------------|
| Introduction | 9-4 to 9-5 |
| Interfaces | 9-6 to 9-7 |
| Characteristics | 9-8 to 9-11 |
| Panel drilling | 9-31 to 9-32 |

COMPOSITE BNC 75 HDTV

| | |
|-------------|------|
| Plugs | 9-12 |
|-------------|------|

BNC 75 HDTV

| | |
|-------------------|------|
| Plugs | 9-13 |
| Jacks | 9-14 |
| Receptacles | 9-14 |
| Adapters | 9-15 |

BNC 50Ω

| | |
|-------------------|--------------|
| Plugs | 9-16 to 9-17 |
| Jacks | 9-18 to 9-19 |
| Receptacles | 9-20 to 9-22 |
| Adapters | 9-23 to 9-24 |
| Caps | 9-24 |

BNC 75Ω

| | |
|-------------------|--------------|
| Plugs | 9-25 to 9-26 |
| Jacks | 9-26 to 9-27 |
| Receptacles | 9-28 |
| Adapters | 9-29 |

BNC-TRX

| | |
|-----------------------|------|
| Characteristics | 9-30 |
| Plugs | 9-30 |
| Jacks | 9-30 |
| Receptacles | 9-30 |

Introduction



| | |
|-----|---------------------------|
| 50Ω | DC - 4 GHz |
| | DC - 1.5 GHz (commercial) |
| | DC - 1.0 GHz (Eco) |
| | DC - 10 GHz (TRIAxIAL) |
| 75Ω | DC - 1.5 GHz |
| | DC - 6 GHz (HDTV) |
| | DC - 1.0 GHz (Eco) |

GENERAL

- Worldwide standardized coaxial connectors
- Bayonet coupling
- Proven strength and reliability
- Good RF performance

APPLICABLE STANDARDS

- MIL-C-39012 / MIL STD 348-A/301
- IEC 169-8
- CECC 22120
- NF-C-93564 KBN series
- UTE-C-93564

APPLICATIONS

- Civil and military radio-telecommunication equipment
- Test and measurement
- Video communication
- Broadcast
- Industrial network
- General electronics

The BNC connector is the most popular coaxial connector series in the world, featuring a two-pin bayonet coupling system for quick and reliable engagement and disengagement.

- **Wide range:**

Radiall's BNC connectors are available with two characteristic impedances: 50Ω and 75Ω. They are completely intermateable. RADIALL also offers low-cost BNC range, and a triaxial BNC TRX series.

- **Convenient three piece design:**

Straight and right angle crimp type cable connectors feature a three piece design: single piece body + center contact + outer ferrule.



Introduction

• Fast and reliable cable attachment

Cable connectors can be either fully crimped or soldered/crimped, offering full flexibility for fast, reliable, high-volume production with standard manual or pneumatic tooling.

- The center contact can be either crimped or soldered.
- The outer contact is attached to the cable by crimping a ferrule.

COMPOSITE BNC 75Ω HDTV CONNECTOR

GENERAL

- The first lightweight composite HDTV BNC available on the market
- Easy to connect and disconnect from the rear—ideal for high-density and recessed bulkhead applications
- Color-coded boots directly on the connector for easy video signal identification
- Guaranteed frequency up to 6 GHz for studio-quality performance
- 1000 mating cycles minimum for guaranteed durability in the field
- True 75Ω design

HDTV places new demands on maintaining high signal integrity at high data rates, from studio-quality broadcast production to video conferencing equipment, our selection of affordable HDTV BNC connectors offer more bandwidth, more performance, and are easier to use.

Our new technologically advanced high-speed composite BNC 75Ω HDTV connector features an incredible easy-to-use two-piece design that makes it easy to crimp on the cable. This new connector can handle data rates up to 3 Gbps or higher while meeting or exceeding SMPTE 292M and 424M standards. The gold plated center and outer contacts provide outstanding electrical performance with a frequency range of up to 6 GHz, and a low return loss of -32 dB at 3 GHz.

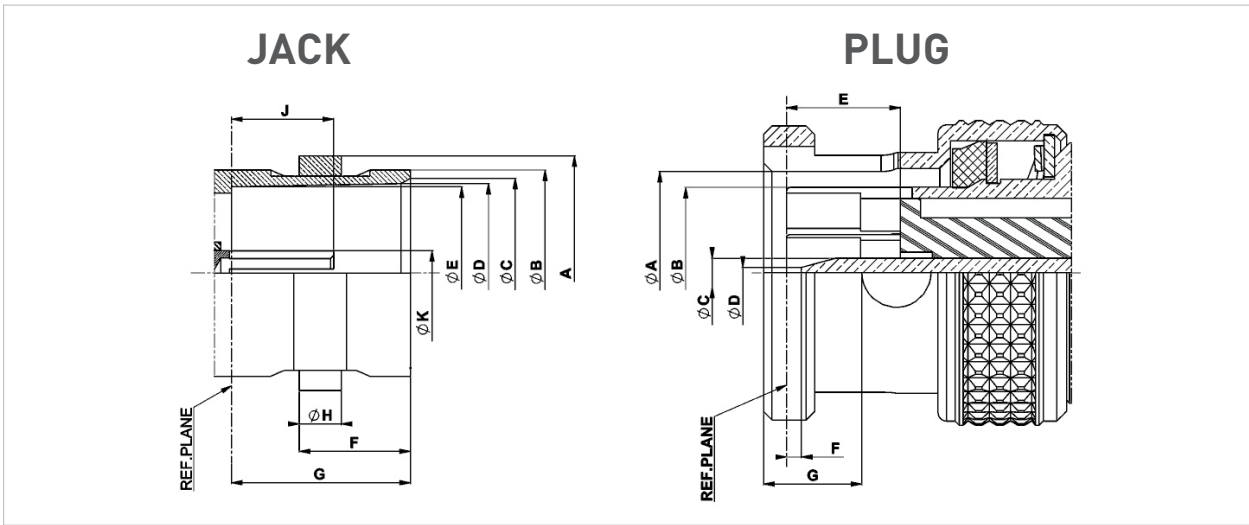
The connector comes in a wide variety of colors for signal cable identification and its special curved interface composite material design with positioning marks makes it easy and fast to connect in high-density and recessed bulkhead applications.

APPLICATIONS

- Broadcast TV stations and studios
- Video routing and production
- Video surveillance equipment
- Video conference equipment



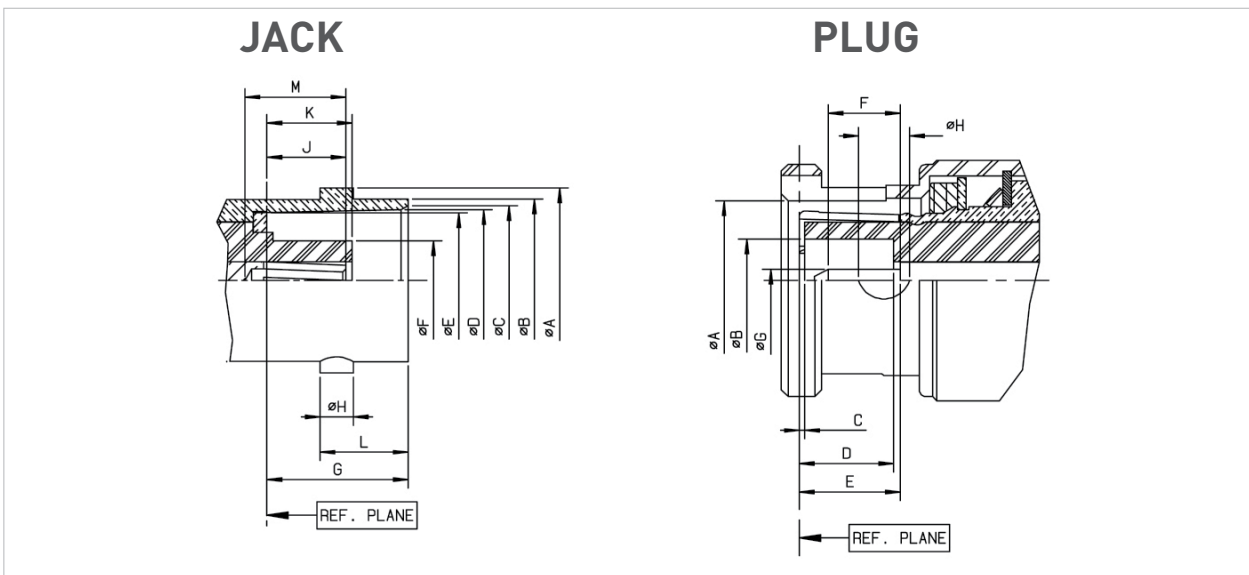
Interface BNC 75 HDTV



| Letter | mm | | inch | |
|--------|-------|-------|------|------|
| | min. | max. | min. | max. |
| A | 10.97 | 11.07 | .432 | .436 |
| B | 9.60 | 9.67 | .378 | .381 |
| C | 8.80 | 9.00 | .346 | .354 |
| D | 8.32 | 8.46 | .328 | .333 |
| E | 8.10 | 8.15 | .319 | .321 |
| F | 5.18 | 5.28 | .204 | .208 |
| G | 8.30 | 8.50 | .327 | .335 |
| H | 1.90 | 2.06 | .075 | .081 |
| J | 4.72 | 5.22 | .186 | .206 |
| K | 2.10 | 2.14 | .083 | .084 |

| Letter | mm | | inch | |
|--------|------|------|------|------|
| | min. | max. | min. | max. |
| A | 9.80 | 9.90 | .386 | .390 |
| B | 8.30 | 8.40 | .327 | .331 |
| C | 1.32 | 1.37 | .052 | .054 |
| D | 0.35 | 0.65 | .014 | .026 |
| E | 5.30 | 5.50 | .209 | .217 |
| F | 0.10 | 0.90 | .004 | .035 |
| G | 4.57 | 4.67 | .180 | .184 |

Interface BNC 50Ω

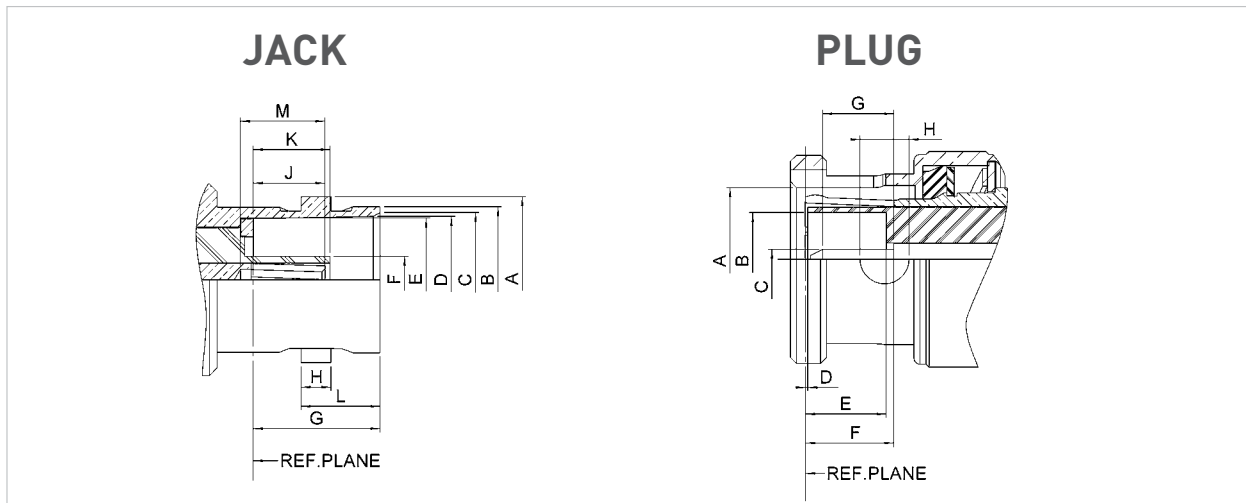


Interface BNC 50Ω

| Letter | mm | | inch | |
|--------|-------|-------|------|------|
| | min. | max. | min. | max. |
| A DIA | 10.97 | 11.07 | .432 | .436 |
| B DIA | 9.60 | 9.70 | .378 | .382 |
| C DIA | 8.79 | 9.04 | .346 | .356 |
| D DIA | 8.31 | 8.46 | .327 | .333 |
| E DIA | 8.10 | 8.15 | .319 | .321 |
| F DIA | - | 4.72 | - | .186 |
| G | 8.31 | 8.51 | .327 | .335 |
| H | 1.91 | 2.06 | .075 | .081 |
| J | 4.72 | 5.23 | .186 | .206 |
| K | 4.78 | 5.28 | .188 | .208 |
| L | 5.18 | 5.28 | .204 | .208 |
| M | 4.95 | - | .195 | - |

| Letter | mm | | inch | |
|--------|------|------|------|------|
| | min. | max. | min. | max. |
| A DIA | 9.78 | 9.91 | .385 | .390 |
| B DIA | 4.83 | - | .190 | - |
| C | 0.15 | - | .006 | - |
| D | 5.28 | 5.79 | .208 | .228 |
| E | 5.33 | 5.84 | .210 | .230 |
| F | 1.98 | - | .078 | - |
| G DIA | 1.32 | 1.37 | .052 | .054 |
| H DIA | 2.31 | 2.46 | .091 | .097 |

Interface BNC 75Ω



| Letter | mm | | inch | |
|--------|-------|-------|------|------|
| | min. | max. | min. | max. |
| A DIA | 10.97 | 11.07 | .432 | .436 |
| B DIA | 9.60 | 9.67 | .378 | .381 |
| C DIA | 8.80 | 9.00 | .347 | .354 |
| D DIA | 8.32 | 8.46 | .328 | .333 |
| E DIA | 8.10 | 8.15 | .319 | .321 |
| F DIA | 4.62 | 4.72 | .182 | .186 |
| G | 8.30 | 8.50 | .326 | .334 |
| H | 1.90 | 2.06 | .074 | .081 |
| J | 4.72 | 5.22 | .186 | .205 |
| K | 4.98 | 5.23 | .196 | .206 |
| L | 5.18 | 5.28 | .204 | .208 |
| M | 5.30 | 5.90 | .209 | .232 |

| Letter | mm | | inch | |
|--------|------|------|------|------|
| | min. | max. | min. | max. |
| A DIA | 9.80 | 9.90 | .386 | .389 |
| B DIA | 6.10 | 6.30 | .240 | .248 |
| C DIA | 1.32 | 1.37 | .052 | .054 |
| D | 0.05 | - | .002 | - |
| E | 5.42 | 5.78 | .213 | .227 |
| F | 5.35 | 5.87 | .211 | .231 |
| G | 3.00 | 3.40 | .118 | .134 |
| H DIA | 3.15 | 3.35 | .124 | .132 |

Characteristics

ELECTRICAL CHARACTERISTICS

| | | | |
|---------------------------------|---------------------------------|-------------|-----------|
| Frequency range | DC - 6 GHz (optimized at 3 GHz) | | |
| Impedance | 75Ω | | |
| V.S.W.R. (max) | DC - 1.5 GHz | 1.5 - 3 GHz | 3 - 6 GHz |
| • Interface (plug + jack) | 1.02 | 1.05 | 1.08 |
| • Mated pair | 1.05 | 1.12 | 1.25 |
| • In series adapters | 1.04 | 1.07 | 1.12 |
| Working voltage | 500 Vrms | | |
| Dielectric withstanding voltage | 1500 Vrms | | |
| RF Leakage @ 1 GHz | 75 dB | | |
| RF Leakage @ 3 GHz | 60 dB | | |
| RF Leakage @ 6 GHz | 50 dB | | |

MECHANICAL CHARACTERISTICS

| | |
|---------------------------------------|--|
| Mating | Intermateable with 50Ω and 75Ω standard BNC connectors |
| Long life duration (mating endurance) | 1000 cycles |
| Engagement force | 13.6 N |
| Mating torque (bayonet) | 28.6 N.cm |
| Coupling nut retention force | Axial force: 450 N Bending stress: 1000 N.cm |
| Center contact insertion force | 10 N max |
| Vibration | MIL STD 202 Meth.204 cond B |

ENVIRONMENTAL CHARACTERISTICS

| | |
|----------------------|--|
| Temperature range | -65°C + 165°C |
| Moisture resistance | MIL STD 202, Meth. 106 CECC 22000 paragraph 4.6.6 |
| Corrosion resistance | MIL STD 202, Meth. 101 cond B (48 hours salt spray) |

MATERIALS AND PLATING

| Components | Material | Plating |
|----------------|---------------------------|---------------------|
| Body | Brass | NPGR / BBR / Nickel |
| Center contact | Brass or Beryllium copper | NPGR |
| Outer contact | Brass | NPGR |
| Insulator | PTFE | - |
| Gasket | Silicone Rubber | - |

Composite Version

CHARACTERISTICS

| | |
|-------------------|---------------------------------|
| Frequency range | DC up to 6GHz |
| Impedance | 75 Ω |
| VSWR | 1.05 @ 3GHz (Return loss -32dB) |
| Mating Cycles | 1000 |
| Temperature Range | -40 °C ~ + 85 °C |

MATERIAL AND PLATING

| Parts | Material | Plating |
|----------------|-----------|---------|
| Coupling Nut | Composite | - |
| Body | Brass | Gold |
| Outer contact | Brass | Gold |
| Center Contact | Brass | Gold |
| Insulator | PTFE | - |

Characteristics

| Test / Characteristics | Standard reference | Values / Remarks |
|------------------------|--------------------|------------------|
|------------------------|--------------------|------------------|

ELECTRICAL CHARACTERISTICS

| Test / Characteristics | Standard reference | Values / Remarks | | | | | | | | | | | | |
|--|--------------------|--|-------|---------|-------|------|------|------|------|----------|------|--|------|--|
| Impedance | | 50Ω | | | | | | | | | | | | |
| Frequency range | | DC - 4 GHz | | | | | | | | | | | | |
| Typical V.S.W.R. • Straight models cable groups: 2/50, 2.6/50, 5/50, 10 + 11/50, .141" • Right angle models: 2/50, 2.6/50, 5/50 | | <table border="1"> <thead> <tr> <th>1 GHz</th> <th>2.5 GHz</th> <th>4 GHz</th> </tr> </thead> <tbody> <tr> <td>1.12</td> <td>1.18</td> <td>1.22</td> </tr> <tr> <td>1.13</td> <td>1.30 max</td> <td>1.22</td> </tr> <tr> <td></td> <td>1.20</td> <td></td> </tr> </tbody> </table> | 1 GHz | 2.5 GHz | 4 GHz | 1.12 | 1.18 | 1.22 | 1.13 | 1.30 max | 1.22 | | 1.20 | |
| 1 GHz | 2.5 GHz | 4 GHz | | | | | | | | | | | | |
| 1.12 | 1.18 | 1.22 | | | | | | | | | | | | |
| 1.13 | 1.30 max | 1.22 | | | | | | | | | | | | |
| | 1.20 | | | | | | | | | | | | | |
| Insertion loss • Straight connector • Right-angle connector | | <table border="1"> <thead> <tr> <th>1 GHz</th> <th>2.5 GHz</th> <th>4 GHz</th> </tr> </thead> <tbody> <tr> <td>0.05</td> <td>0.07</td> <td>0.13</td> </tr> <tr> <td>0.08</td> <td>0.16</td> <td>0.20</td> </tr> </tbody> </table> | 1 GHz | 2.5 GHz | 4 GHz | 0.05 | 0.07 | 0.13 | 0.08 | 0.16 | 0.20 | | | |
| 1 GHz | 2.5 GHz | 4 GHz | | | | | | | | | | | | |
| 0.05 | 0.07 | 0.13 | | | | | | | | | | | | |
| 0.08 | 0.16 | 0.20 | | | | | | | | | | | | |
| RF leakage | | -55 dB min from 2 to 3 GHz | | | | | | | | | | | | |
| Insulation resistance | | 5000 MΩ min | | | | | | | | | | | | |
| Contact resistance • Center contact • Outer contact | MIL | 1.5 mΩ 0.2 mΩ | | | | | | | | | | | | |
| Working voltage in VRMS • At sea level (at 21 000m) | | 500 125 | | | | | | | | | | | | |
| Dielectric withstanding voltage in VRMS • At sea level (at 21 000m) | | 1500 375 | | | | | | | | | | | | |
| RF testing voltage in VRMS Sea level (5 MHz) | | 1000 | | | | | | | | | | | | |

MECHANICAL CHARACTERISTICS

| Test / Characteristics | Standard reference | Values / Remarks |
|--|--------------------|------------------------|
| Durability | | 500 matings |
| Force to engage and disengage • Axial • Torque | | 13.6 N max 28.6 Ncm |
| Coupling nut retention force | | 445 N |
| Cable retention force • Cable 2/50, 2.6/50 • Cable 5/50, 10 + 11/50 • Cable .141" | MIL | 227 N |
| Center contact retention force | | 27.2 N |

ENVIRONMENTAL CHARACTERISTICS

| Test / Characteristics | Standard reference | Values / Remarks |
|---|--------------------|--|
| Temperature range • Flexible cables • Semi-rigid cables | | -65°C + 165°C -65°C + 105°C |
| Thermo cycling test | | MIL STD 202, method 107, condition B |
| Thermal shock | | MIL STD 202, method 107, condition B |
| High temperature endurance | | MIL STD 202, method 108 |
| Corrosion salt spray | | MIL STD 202, method 101, condition B |
| Vibration | | MIL STD 202, method 204, condition B |
| Shock | | MIL STD 202, method 213, condition G |
| Moisture resistance | | MIL STD 202, method 106 |
| Hermetic test | | MIL STD 202, method 112, condition C vacuum 10 ⁻⁶ Hgmm (Torr) leakage rate < 10 ⁻⁶ atm/cm ³ /s |
| Barometric pressure | | Pressure test: 3.5 bars; duration: 2 mn; temperature: 15°C to 25°C |

MATERIALS AND PLATING

| | Material | Plating |
|--------------------------------------|--|--------------|
| Bodies | Brass | Nickel / BBR |
| Center contact • Male • Female | Brass Bronze or heat treated beryllium following QQ-C-530 | Gold |
| Nut | Brass | - |
| Insulator | PTFE | - |
| Gasket | Silicon Rubber | - |

All dimensions are given in mm.

Go online for data sheets & assembly instructions.

Visit www.radiall.com and enter the part number.

Characteristics

| Test / Characteristics | Standard reference | Values / Remarks |
|------------------------|--------------------|------------------|
|------------------------|--------------------|------------------|

ELECTRICAL CHARACTERISTICS

| | | |
|---|-----|--|
| Impedance | - | 75Ω |
| Frequency range | - | DC - 1.5 GHz |
| V.S.W.R. max • Straight models cable group: 2.6/75, 5/75, 6/75, 8/75, 10 + 11/75 • Right angle models: 2.6/75, 6/75 | - | 1.30 1.35 |
| Insertion loss • Straight connector • Right-angle connector | MIL | 0.2 dB max at 1 GHz 0.3 dB max at 1 GHz |
| RF leakage | | -55 dB min from 2 to 3 GHz |
| Insulation resistance | | 5000 MΩ min |
| Contact resistance • Center contact • Outer contact | | 1.5 mΩ 0.2 mΩ |
| Working voltage in VRMS • At sea level (at 21 000m) | | 500 125 |
| Dielectric withstanding voltage in VRMS • At sea level (at 21 000m) | | 1500 375 |
| RF testing voltage in VRMS Sea level (5 MHz) | | - |

MECHANICAL CHARACTERISTICS

| | | |
|---|-----|------------------------|
| Durability | MIL | 500 matings |
| Force to engage and disengage • Axial • Torque | | 13.6 N max 28.6 Ncm |
| Coupling nut retention force | | 445 N |
| Cable retention force Cable 2.6/75, 5/75 6/75, 8/75, 10 + 11/75 | | 340 N |
| Center contact retention force | | 27 N |

ENVIRONMENTAL CHARACTERISTICS

| | | |
|--|-----|--|
| Temperature range flexible cables | MIL | -65°C + 165°C |
| Thermo cycling test | | MIL STD 202, method 107, condition B |
| High temperature endurance | | MIL STD 202, method 108 |
| Corrosion salt spray | | MIL STD 202, method 101, condition B |
| Vibration | | MIL STD 202, method 204, condition B |
| Shock | | MIL STD 202, method 213, condition G |
| Moisture resistance | | MIL STD 202, method 106 |
| Barometric pressure | | Pressure test: 3.5 bars; duration: 2 mn; temperature: 15°C to 25°C |

MATERIALS AND PLATING

| | Material | Plating |
|--------------------------------------|--|---------|
| Bodies | Brass | Nickel |
| Center contact • Male • Female | Brass Bronze or heat treated beryllium following QQ-C-530 | Gold |
| Nut | Brass | - |
| Insulator | PTFE | - |
| Gasket | Silicone Rubber | - |

Standard packaging = 100 pieces

Go online for data sheets & assembly instructions.

Visit www.radiall.com and enter the part number.

Characteristics

Commercial version R141 XXX 161 and R142 XXX161

ELECTRICAL CHARACTERISTICS

| | R141 XXX 161 | R142 XXX 161 |
|----------------------------|---------------------|----------------------|
| Impedance | 50Ω | 75Ω |
| Operating frequency | DC to 1.5 GHz | |
| Typical V.S.W.R. (1.5 GHz) | | |
| • Straight models | ∅ 2.6 ∅ 5 ∅ 6 | 1.21 1.14 1.05 |
| • Right angle models | ∅ 5 & ∅ 6 | 1.17 |
| Testing voltage (VRMS) | 1500 | |
| Operating voltage (VRMS) | 500 | |
| Insulation resistance (MΩ) | 5000 | |
| Contact resistance (mΩ) | 10 | |

MECHANICAL CHARACTERISTICS

| | |
|------------|-------------|
| Durability | 100 matings |
|------------|-------------|

ENVIRONMENTAL CHARACTERISTICS

| | |
|-------------------|--------------|
| Temperature range | -40°C + 85°C |
|-------------------|--------------|

MATERIALS AND PLATING

| | Materials | Platings |
|---------------------------------|---------------|----------|
| Male and female bodies | Brass | Nickel |
| Coupling nut | Die cast zinc | |
| Outer contact | Brass | |
| Insulators | Polypropylene | |
| Male and female center contacts | Brass | Gold |

ECO version R141A XXX XXX and R142A XXX XXX

ELECTRICAL CHARACTERISTICS

| | R141A XXX XXX | R142A XXX XXX |
|------------------------------------|-------------------|---------------|
| Impedance | 50Ω | 75Ω |
| Frequency range | DC - 1 GHz | |
| Typical V.S.W.R. (straight models) | 1.3 at 1 GHz | |
| Temperature range | -40°C / +85°C | |
| Durability | 100 mating cycles | |

MATERIALS AND PLATING

| | Material | Plating |
|------------------------|-----------------------|-------------------------------------|
| Connector body | Brass / Die cast zinc | Nickel |
| Insulators | PTFE / Polypropylene | - |
| Female center contacts | Phosphor bronze | Gold 0.1μm typical (Center contact) |

PACKAGING

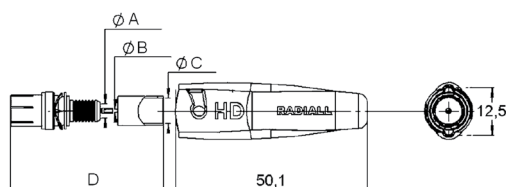
| | |
|-----------|-----------------------------------|
| Packaging | 100 pieces bulk Unit packaging |
|-----------|-----------------------------------|

Standard packaging = 100 pieces

All dimensions are given in mm.

Plugs

STRAIGHT PLUGS CRIMP TYPE FOR FLEXIBLE CABLES



| Cable group | Cable group dia. | Part number | Color | Dimensions | | | |
|---|------------------|--------------|--------|------------|------|------|------|
| | | | | A | B | C | D |
| Mini RG59 Belden 1855A, DRAKA 0.6/2.8 CAE HD 0628 | 0.6/2.8 | R142 079 750 | Black | 2.85 | 0.65 | 5.42 | 26.7 |
| | | R142 079 751 | Red | | | | |
| | | R142 079 752 | Green | | | | |
| | | R142 079 753 | Blue | | | | |
| | | R142 079 754 | Yellow | | | | |
| | | R142 079 755 | Grey | | | | |
| | | R142 079 756 | White | | | | |
| | | R142 079 757 | Brown | | | | |
| | | R142 079 758 | Orange | | | | |
| | | R142 079 759 | Violet | | | | |
| RG59 BELDEN 1505A DRAKA 0.8/3.7 ARGOSY Image 720 CAE HD 08370 | 0.8/3.7 | R142 079 760 | Black | 3.75 | 0.85 | 6.6 | 25.7 |
| | | R142 079 761 | Red | | | | |
| | | R142 079 762 | Green | | | | |
| | | R142 079 763 | Blue | | | | |
| | | R142 079 764 | Yellow | | | | |
| | | R142 079 765 | Grey | | | | |
| | | R142 079 766 | White | | | | |
| | | R142 079 767 | Brown | | | | |
| | | R142 079 768 | Orange | | | | |
| R142 079 769 | Violet | | | | | | |
| RG6 BELDEN 1694A DRAKA 1.0/4.8 ARGOSY Image 1000 CAE 10460 | 1.0/4.8 | R142 079 770 | Black | 4.85 | 1.05 | 7.1 | 23.7 |
| | | R142 079 771 | Red | | | | |
| | | R142 079 772 | Green | | | | |
| | | R142 079 773 | Blue | | | | |
| | | R142 079 774 | Yellow | | | | |
| | | R142 079 775 | Grey | | | | |
| | | R142 079 776 | White | | | | |
| | | R142 079 777 | Brown | | | | |
| | | R142 079 778 | Orange | | | | |
| R142 079 779 | Violet | | | | | | |

Plugs

STRAIGHT PLUGS CRIMP TYPE FOR FLEXIBLE CABLES

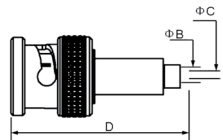


Fig. 1

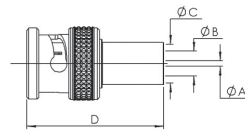
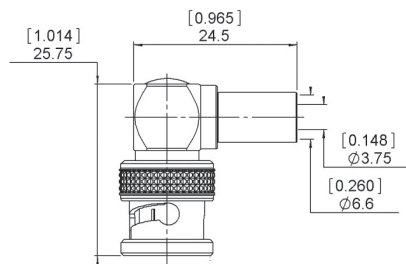


Fig. 2

| Cable group | Cable group dia. | Part number | Fig. | Dimensions mm (inch) | | | | Packaging | Note |
|--|------------------|--------------|------|----------------------|------------|------------|--------------|-----------|--------------------------------|
| | | | | A | B | C | D | | |
| RD179 BELDEN179DT, DRAKA0.31/1.45 AF, CAE HD 03140 | 0.3/1.4 | R142 077 742 | 1 | - | 1.55 | 0.4 | 29.7 | 100 | - |
| Mini RG59 Belden 1855A, Draka 0.6/2.8 AF, CAE HD 0628 | 0.6/2.8 | R142 077 702 | 2 | 0.85 [.03] | 2.85 [.11] | 5.42 [.21] | 27.68 [1.09] | 100 | - |
| Mini RG59 Argosy Image 360 | 0.6/2.95 | R142 077 712 | | | 3.00 [.12] | | | | - |
| RG59 Belden 1505A, Draka 0.8/3.7 AF, CAE HD 08370, Argosy Image 720 | 0.8/3.7 | R142 077 722 | | | 3.75 [.15] | 6.60 [.26] | 26.68 [1.05] | | - |
| RG6 Belden 1694A, Draka 1.0/4.8 AF, CAE HD 10460, Argosy Image 1000 | 1.0/4.8 | R142 085 702 | | 0.90 | 3.95 | 6.60 | 28.68 | | Hexagonal crimp tool 1.73/6.48 |
| | | R142 077 732 | | 1.05 [.04] | 4.85 [.19] | 7.50 [.30] | 26.68 [1.05] | | - |
| RG11 Belden 7731, Draka 1.6/7.3 AF, CAE HD16720, Argosy Image 2000 | 1.6/7.3 | R142 077 747 | | 1.70 | 7.45 | 11.05 | 32 | | - |

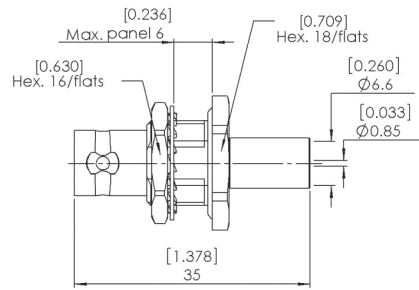
RIGHT ANGLE PLUG CRIMP TYPE FOR FLEXIBLE CABLE



| Cable group | Cable group dia. | Part number | Packaging |
|--|------------------|--------------|-----------|
| RG59 Belden 1505A, Draka 0.8/3.7 AF, CAE HD 08370, Argosy Image 720 | 0.8/3.7 | R142 187 720 | 100 |

Jacks and Receptacles

STRAIGHT BULKHEAD JACK GRIMP TYPE FOR FLEXIBLE CABLE



| Cable group | Cable group dia. | Part number | Panel drilling | Packaging |
|---|------------------|--------------|----------------|-----------|
| RG59 Belden 1505A, Draka 0.8/3.7 AF, CAE HD 08370, Argosy Image 720 | 0.8/3.7 | R142 334 700 | P16 | 100 |

PCB FEMALE RECEPTACLES

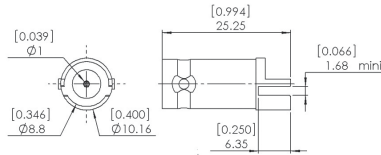


Fig. 1

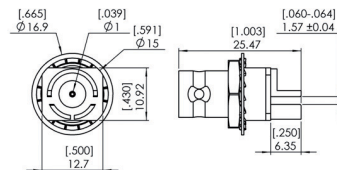


Fig. 2

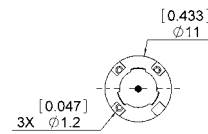
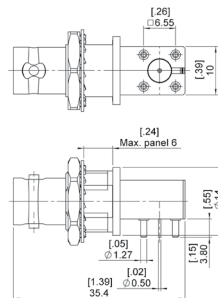


Fig. 3

| Part number | Fig. | Captive center contact | Panel drilling | Packaging | Note |
|--------------|------|------------------------|----------------|-----------|-------------------------|
| R142 568 703 | 1 | Yes | - | 100 | Edge mount PCB |
| R142 567 703 | 2 | | - | | Bulkhead Edge mount PCB |
| R142 500 740 | 3 | | P20 | 60 | Straight PCB, Zamak |

RIGHT ANGLE PCB FEMALE RECEPTACLES



| Part number | Captive center contact | Note |
|--------------|------------------------|----------|
| R142 676 700 | Yes | Bulkhead |

Adapters

IN SERIES ADAPTERS

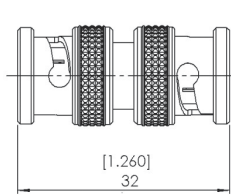
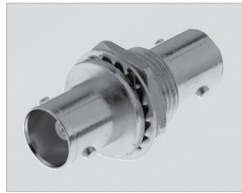


Fig. 1

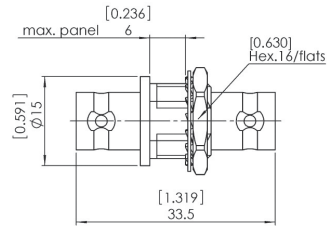


Fig. 2

| Part number | Fig. | Captive center contact | Panel drilling | Note | Packaging |
|--------------|------|------------------------|----------------|-----------------|-----------|
| R142 703 703 | 1 | Yes | - | Male - Male | 100 |
| R142 720 700 | 2 | | P16 | Female - Female | |

BETWEEN SERIES ADAPTERS

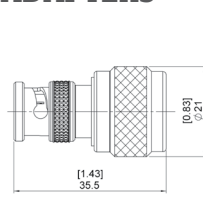


Fig. 1

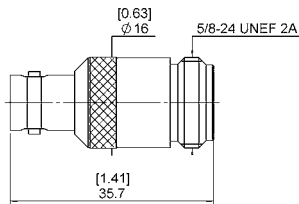


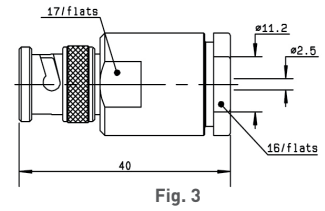
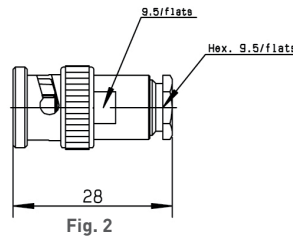
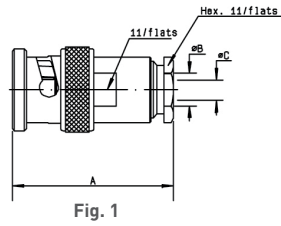
Fig. 2

| Part number | Fig. | Captive center contact | Note |
|--------------|------|------------------------|--------------------------|
| R192 417 010 | 1 | Yes | BNC HD male - N male |
| R192 418 010 | 2 | | BNC HD female - N female |

BNC 75 HDTV

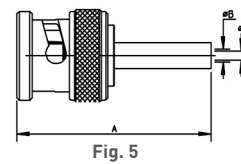
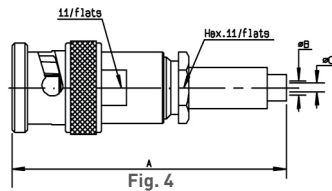
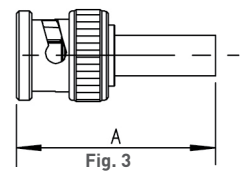
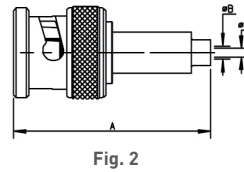
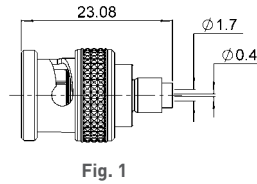
Straight Plugs

STRAIGHT PLUGS CLAMP TYPE



| Cable group | Cable group dia. | Part number | Fig. | Dimensions (mm) | | | Captive center contact | Note | |
|--------------------------------------|------------------|--------------|------|-----------------|------|------|------------------------|------------------|---|
| | | | | A | B | C | | | |
| RG178 / RG196 | 2/50/S + D | R141 003 000 | 1 | 27 | 2.2 | 0.6 | Yes | - | |
| RG174 / RG316 / RD316 / RG179 | 2.6/50+75/S+D | R141 004 000 | | | 3.1 | | | - | |
| PPD Cable | 3.5/50 | R141 005 000 | 2 | 28 | 3.7 | 1.2 | No | - | |
| RG58 / RG141 | 5/50/S | R141 007 000 | | | | | | - | - |
| RG58 / RG141 / RG142 / RG223 / RG400 | 5/50/S + D | R141 008 000 | 1 | 28 | 5.6 | 1.2 | Yes | - | |
| | | R141 009 000 | | | | | | 1.2 | - |
| | | R141 010 000 | | | | | | 1.05 | - |
| RG59 / RG62 | 6/75+93 | R141 012 000 | 3 | 27.5 | 6.6 | 1.05 | No | - | |
| RG213 / RG393 / RG214 / RG216 | 10 + 11/50/S + D | R141 018 000 | | | | | - | - | - |
| RG402 | .141" | R141 052 000 | 1 | 29 | 3.65 | 1.2 | No | Semi-rigid cable | |

STRAIGHT PLUGS FULL CRIMP TYPE FOR FLEXIBLE CABLES



| Cable group | Cable group dia. | Part number | Fig. | Dimensions (mm) | | | Captive center contact | Note |
|-----------------------|------------------|---------------|------|-----------------|-----|------|--------------------------------------|-------------------------------|
| | | | | A | B | C | | |
| RG178 / RG196 | 2/50/S | R141 070 520 | 1 | 23 | 1.7 | 0.4 | Yes | Reverse crimp |
| RG174 / RG316 | 2.6/50/S | R141 075 000 | 2 | 30.3 | 1.8 | 0.6 | | - |
| | | R141 075 161 | | | | | | Commercial version |
| | | R141A 075 161 | 3 | 26 | 1.7 | 0.6 | | Single piece body ECO version |
| - | 3.8/93/S | R141 077 000 | 2 | 28 | 2.7 | 0.4 | - | |
| RG58 / RG14 | 5/50/S | R141 072 000 | 4 | 39 | 3.1 | - | - | |
| | | R141 082 000 | 5 | 28 | | | Single piece body | |
| | | R141 082 161 | 3 | 30 | 3.1 | 1 | Single piece body Commercial version | |
| | | R141A 082 161 | | | | | ECO version | |
| RG142 / RG223 / RG400 | 5/50/D | R141 083 000 | 5 | 28 | 3 | 1.05 | Single piece body | |

Right Angle Plugs and Straight Jacks

RIGHT ANGLE PLUGS CLAMP TYPE FOR FLEXIBLE CABLES

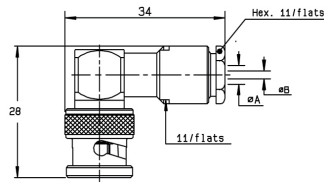
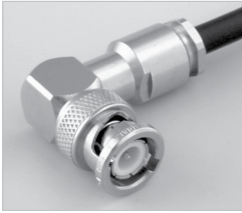


Fig. 1

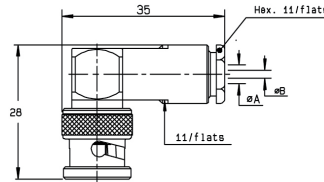


Fig. 2

| Cable group | Cable group dia. | Part number | Fig. | Dimensions (mm) | | Captive center contact | Note |
|--------------------------------------|------------------|--------------|------|-----------------|------|------------------------|----------------|
| | | | | A | B | | |
| RG178 / RG196 | 2/50 | R141 153 000 | 1 | 2.2 | 0.6 | Yes | 100 pieces |
| RG174 / RG316 / RD316 / RG179 | 2.6/50+75/S+D | R141 154 000 | | 3.1 | | | |
| RG58 / RG141 / RG142 / RG223 / RG400 | 5/50/S + D | R141 156 000 | 2 | 5.6 | 1.05 | | Unit packaging |

RIGHT ANGLE PLUGS FULL CRIMP TYPE FOR FLEXIBLE CABLES

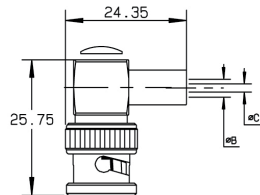


Fig. 1

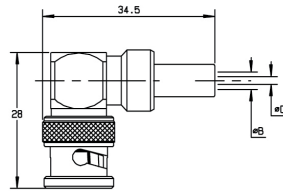


Fig. 2

| Cable group | Cable group dia. | Part number | Fig. | Dimensions (mm) | | Captive center contact | Note |
|-----------------------|------------------|--------------|------|-----------------|------|------------------------|--------------------|
| | | | | B | C | | |
| RG174 / RG316 | 2.6/50/S | R141 181 161 | 1 | 3.25 | 1.7 | Yes | Commercial version |
| | | R141 182 000 | 2 | 5.5 | 1.05 | | Single piece body |
| RG58 / RG141 | 5/50/S | R141 182 161 | 1 | 5.5 | 3.15 | Yes | Commercial version |
| | | R141 182 177 | 2 | 5.55 | 3.2 | | Non magnetic |
| RG142 / RG223 / RG400 | 5/50/D | R141 183 000 | 2 | 5.8 | 1.05 | | Single piece body |

STRAIGHT JACKS FOR FLEXIBLE CABLES

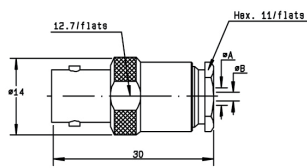


Fig. 1

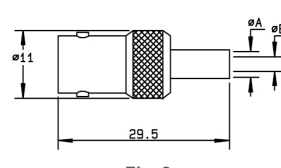


Fig. 2

| Cable group | Cable group dia. | Part number | Fig. | Dimensions (mm) | | Captive center contact | Note |
|--------------------------------------|------------------|--------------|-------------------------------------|-----------------|------|------------------------|------------------------------------|
| | | | | A | B | | |
| RG58 / RG141 / RG142 / RG223 / RG400 | 5/50/S + D | R141 207 000 | 1 | 5.6 | 1.05 | No | Clamp type |
| | | R141 208 000 | | | | | |
| RG174 / RG316 | 2.6/50/S | R141 217 000 | 2 | - | 0.57 | Yes | Full crimp type |
| RG58 / RG141 | 5/50/S | R141 237 000 | | 5.5 | 1.05 | | Yes |
| | | R141 237 161 | Commercial version, full crimp type | | | | |
| RG142 / RG223 / RG400 | 5/50/D | R141 220 000 | | | | | Single piece body, full crimp type |

Square Flange Jacks

STRAIGHT SQUARE FLANGE JACKS CLAMP TYPE FOR FLEXIBLE CABLES

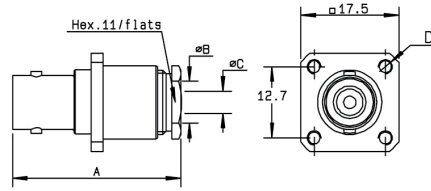
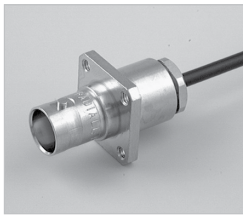


Fig. 1

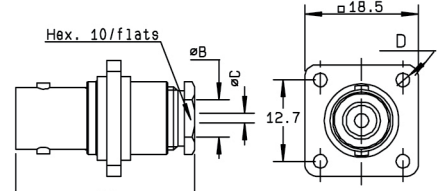


Fig. 2

| Cable group | Cable group dia. | Part number | Fig. | Dimensions (mm) | | | | Captive center contact | Panel drilling | Note | |
|--------------------------------------|------------------|--------------|------|-----------------|-----|------|-------------|------------------------|----------------|------------------|-----|
| | | | | A | B | C | D | | | | |
| RG178 / RG196 | 2/50/S + D | R141 253 000 | 1 | 29.5 | 2.2 | 0.6 | 3-56-UNF-2B | Yes | P01 | - | |
| RG174 / RG316 / RD316 / RG179 | 2.6/50+75/S+D | R141 254 000 | | | 3.1 | | | | | - | |
| | | R141 278 000 | | | 3 | | | | | 2.7 | - |
| | | R141 277 000 | | | | | | | | 2 | 2.6 |
| RG58 / RG141 | 5/50/S | R141 257 000 | 1 | 30 | 5.6 | 1.05 | 2.5 | No | P01 | - | |
| | | R141 256 000 | 2 | - | 5.6 | 1.05 | 2.6 | | P02 | Insulated flange | |
| RG58 / RG141 / RG142 / RG223 / RG400 | 5/50/S + D | R141 258 000 | 1 | 30 | 5.6 | 1.05 | 3-56-UNF-2B | | P01 | Unit packaging | |
| RG59 | 6/75 | R141 261 000 | | | | | | | 30 | 6.5 | 1 |

STRAIGHT SQUARE FLANGE JACKS FULL CRIMP TYPE FOR FLEXIBLE CABLES

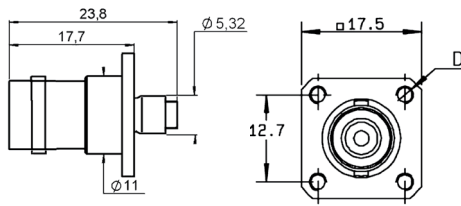


Fig. 1

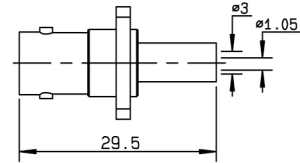


Fig. 2

| Cable group | Cable group dia. | Part number | Fig. | Dimensions D (mm) | Captive center contact | Panel drilling | Note |
|---------------|------------------|--------------|------|-------------------|------------------------|----------------|----------------------------------|
| RG174 / RG316 | 2.6/50 | R141 290 200 | 1 | M3 x 0.5 | Yes | P04 | Reverse crimping, Unit packaging |
| RG58 / RG141 | 5/50/S | R141 292 000 | 2 | 3 x 56 UNEF 2B | | P17 | Single piece body |

Bulkhead Jacks

STRAIGHT BULKHEAD JACKS CLAMP TYPE

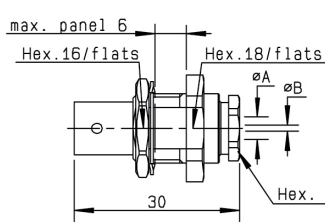


Fig. 1

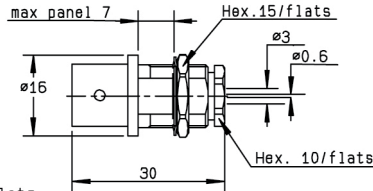


Fig. 2

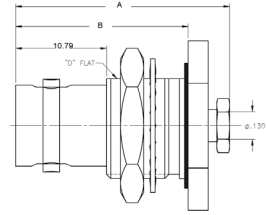


Fig. 3

| Cable group | Cable group dia. | Part number | Fig. | Dimensions (mm) | | Captive center contact | Panel drilling | Note |
|--------------------------------------|------------------|---------------|------|-----------------|-------|------------------------|----------------|----------------------------|
| | | | | A | B | | | |
| RG178 / RG196 | 2/50/S | R141 323 000 | 1 | 2.2 | 0.6 | Yes | P11 | Panel sealed |
| RG174 / RG316 / RD316 / RG179 | 2.6/50+75/S+D | R141 304 000 | 2 | | | | | Panel sealed |
| | | R141 324 000 | 1 | 3.1 | 0.6 | | | Totally sealed |
| RG174 / RG316 / RD316 | 2.6/50/S + D | R141 324 200 | 1 | 3.1 | 0.6 | No | | Panel sealed |
| RG58 / RG141 / RG142 / RG223 / RG400 | 5/50/S + D | R141 327 000 | 1 | 5.6 | 1.05 | Yes | | Panel sealed, non magnetic |
| | | R141 338 007 | 3 | 3.68 | 1.27 | | | No |
| RG401 | .141" | R141 338 000 | 3 | 3.65 | 1.05 | | | Panel sealed |
| RG174 / RG316 / RG179 | 2.6/50+75S | 6501-6571-103 | 3 | 27.42 | 20.98 | Yes | P11 | Panel sealed |
| RD316 | 2.6/50D | 6501-7551-219 | 3 | 25.4 | 20.47 | | | |

STRAIGHT BULKHEAD JACKS CRIMP TYPE FOR FLEXIBLE CABLES

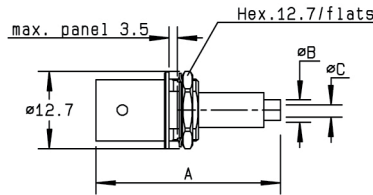


Fig. 1

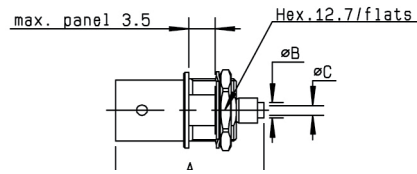


Fig. 2

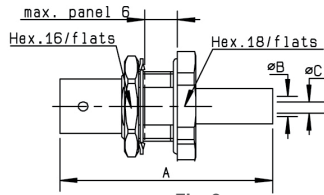


Fig. 3

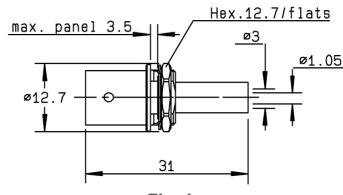


Fig. 4

| Cable group | Cable group dia. | Part number | Fig. | Dimensions (mm) | | | Captive center contact | Panel drilling | Note |
|---------------|------------------|---------------|------|-----------------|------|------|------------------------|----------------|---------------------------------------|
| | | | | A | B | C | | | |
| RG178 | 2/50S | R141 303 503 | 2 | 26.4 | 2 | 0.4 | Yes | - | Reverse crimping / commercial version |
| RD178 | 2/50D | R141 301 000 | 1 | 33.35 | 1.09 | 0.6 | | P14 | Reverse crimping / commercial version |
| RG174 / RG316 | 2.6/50/S | R141 306 000 | 1 | 34 | 1.7 | 0.6 | No | P11 or P16 | Panel sealed |
| | | R141 306 503 | 2 | 26 | 2.95 | | | | |
| | | R141 331 500 | 3 | 38.5 | 1.7 | | | | |
| RG58 / RG141 | 5/50/S | R141A 306 000 | 1 | 31 | 1.7 | 0.6 | Yes | P14 | ECO version |
| | | R141 308 000 | 4 | - | - | - | | | Single piece body |
| RG58 / RG141 | 5/50/S | R141 332 500 | 3 | 35.5 | 3.1 | 1.05 | | P11 or P16 | Panel sealed single piece body |

Flange Receptacles

FLANGE RECEPTACLES

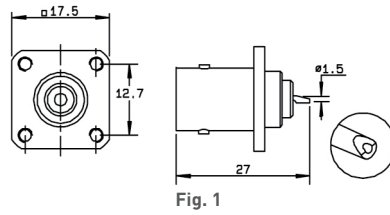


Fig. 1

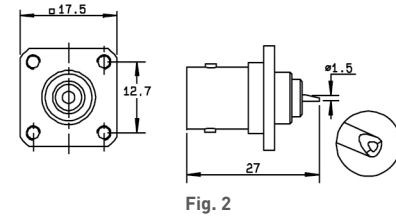


Fig. 2

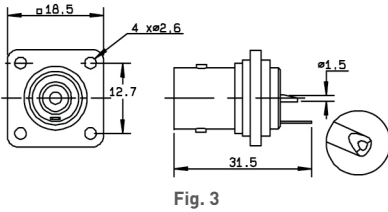


Fig. 3

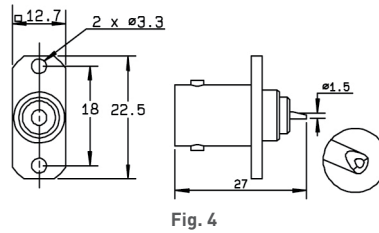


Fig. 4

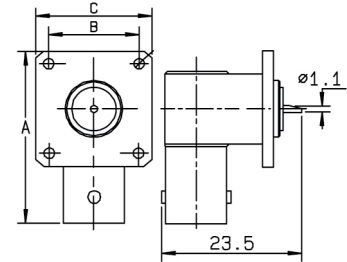
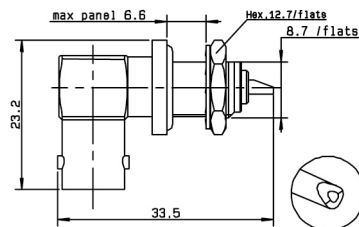
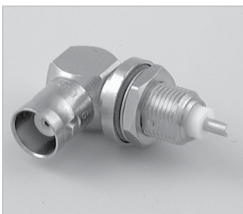


Fig. 5

| Part number | Fig. | Dimensions (mm) | | | Captive center contact | Panel drilling | Flange holes | Note |
|--------------|------|-----------------|------|------|------------------------|----------------|--------------|-------------------------------|
| | | A | B | C | | | | |
| R141 403 000 | 1 | - | - | - | Yes | P07 | 4 x M2.5 | - |
| R141 404 000 | 2 | - | - | - | | P06 | | - |
| R141 406 000 | 1 | - | - | - | | P07 | 4 x M2.6 | - |
| R141 407 000 | 2 | - | - | - | | P06 | | - |
| R141 410 000 | 3 | - | - | - | | P02 | - | Insulated flange / Solder tag |
| R141 453 000 | 4 | - | - | - | | P18 | - | 2 hole flange |
| R141 654 000 | 5 | 26.9 | 12.7 | 17.5 | | P05 | 4 x M2.6 | Right angle receptacle |

Bulkhead Receptacles

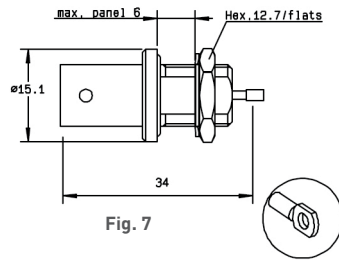
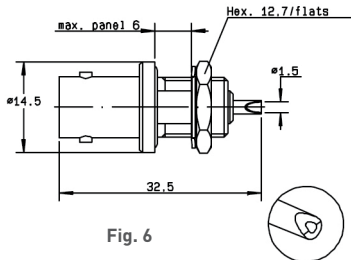
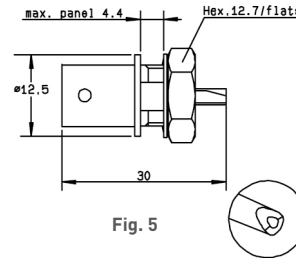
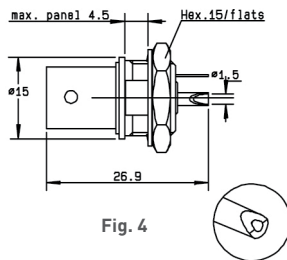
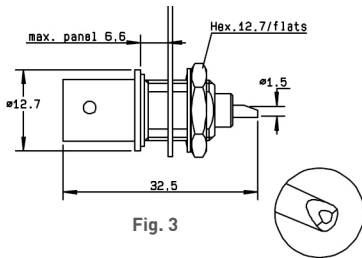
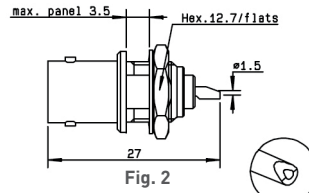
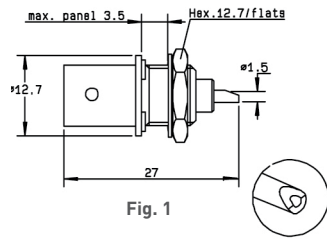
RIGHT ANGLE BULKHEAD RECEPTACLE WITH SOLDER POT



| Part number | Captive center contact | Panel drilling |
|--------------|------------------------|----------------|
| R141 680 000 | Yes | P14 |

Bulkhead Receptacles

STRAIGHT BULKHEAD RECEPTACLES WITH SOLDER POT



| Part number | Fig. | A (Length) | Captive center contact | Panel drilling | Note |
|---------------|------|------------|------------------------|----------------|---|
| R141 554 000 | 1 | - | Yes | P12 | - |
| R141 557 000 | 2 | - | | - | |
| R141 559 000 | 3 | - | | P14 | Solder tag |
| R141 563 161 | 2 | - | | P11 | Silver plated center contact / Commercial version |
| R141 572 000 | 4 | - | | P14 | Insulated receptacle + Solder tag |
| R141 574 000 | 5 | - | | P15 | Commercial version / Insulated |
| R141 574 161 | | | | P15 | Fully sealed / Q200-5 insulator |
| R141 603 000 | 6 | - | | P15 | Fully sealed |
| R141 605 000 | | | | P21 | Not sealed / ECO version |
| R141A 605 000 | 3 | 28 | | P14 | Hermetically sealed |
| R141 625 000 | 7 | - | | | |

Receptacles

RECEPTACLES

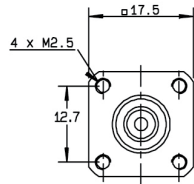
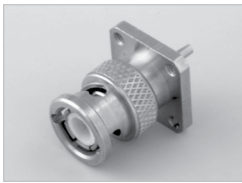


Fig. 1

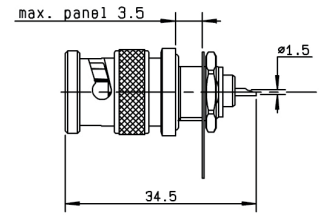
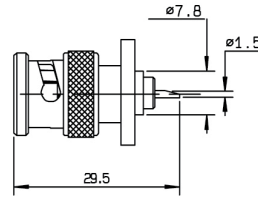


Fig. 2

| Part number | Fig. | Captive center contact | Panel drilling | Note |
|--------------|------|------------------------|----------------|---|
| R141 440 000 | 1 | Yes | P03 | Male square flange |
| R141 580 000 | 2 | | P14 | Male bulkhead / Panel sealed / Solder tag |

STRAIGHT PCB FEMALE RECEPTACLES

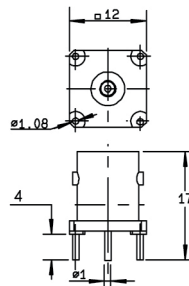


Fig. 1

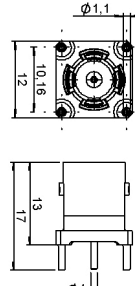


Fig. 2

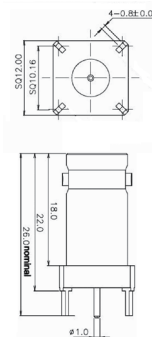


Fig. 3

| Part number | Fig. | Captive center contact | Panel drilling | Note |
|--------------|------|------------------------|----------------|------------------------------------|
| R141 426 000 | 1 | Yes | P08 | - |
| R141 426 161 | 2 | | | Die cast body / Commercial version |
| R141 426 168 | 3 | | - | - |

RIGHT ANGLE PCB FEMALE RECEPTACLES

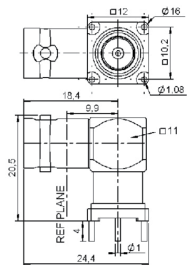


Fig. 1

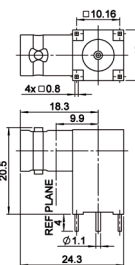


Fig. 2

| Part number | Fig. | Captive center contact | Panel drilling | Finish | Note |
|--------------|------|------------------------|----------------|--------|------|
| R141 665 000 | 1 | Yes | P19 | Nickel | - |
| R141 665 200 | 2 | | P08 | | - |

Adapters

IN SERIES ADAPTERS

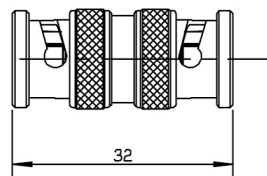


Fig. 1

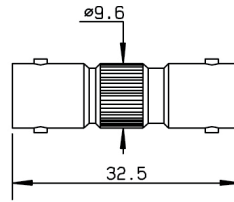


Fig. 2

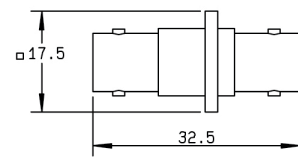


Fig. 3

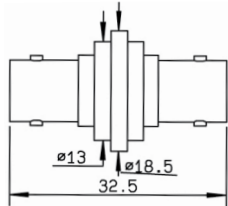


Fig. 4

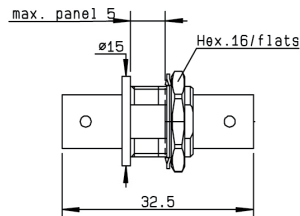


Fig. 5

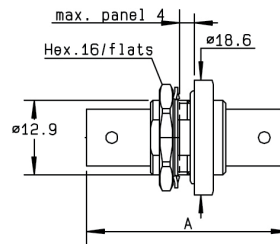


Fig. 6

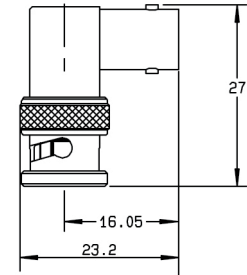
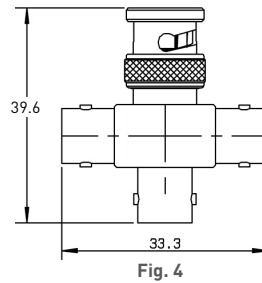
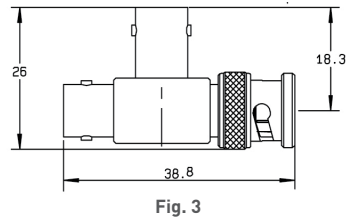
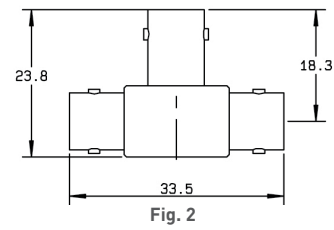
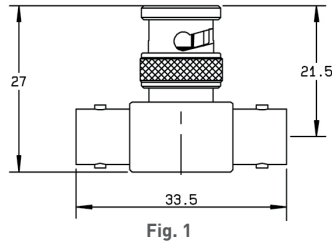
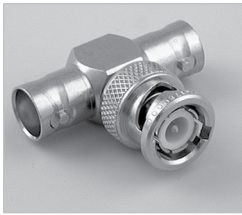


Fig. 7

| Part number | Fig. | Captive center contact | Dimension A (mm) | Flange holes | Panel drilling | Note |
|---------------|------|------------------------|------------------|--------------|---------------------------|---|
| R141 703 000 | 1 | Yes | - | - | - | Male - Male |
| R141 704 000 | 2 | | - | - | - | Female - Female |
| R141 710 000 | 3 | | - | 4 x M2.5 | P10 | Female - Female square flange |
| R141 717 000 | 4 | | - | 4 x 2.6 | P02 | Female - Female square insulated flange |
| R141 720 000 | 5 | | - | - | P13 | Female - Female bulkhead |
| R141A 720 000 | | | - | - | | Female - Female bulkhead / ECO version |
| R141 723 000 | | | - | - | P13 or P16 | Female - Female insulated bulkhead |
| R141 723 161 | | | - | - | | Female - Female insulated bulkhead / Commercial version |
| R141 730 000 | 6 | | - | 35.7 | P13 | Female - Female panel sealed bulkhead |
| R141 753 000 | | | - | 35.3 | | Female - Female hermetically sealed bulkhead |
| R141 770 000 | 7 | - | - | - | Male - Female right angle | |

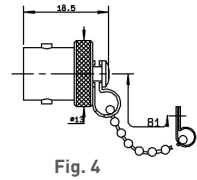
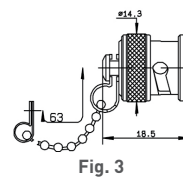
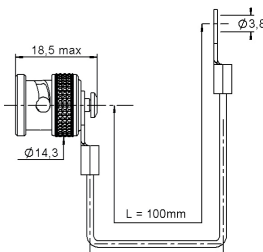
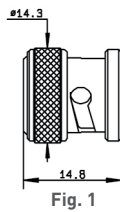
Adapters and Caps

CROSS AND TEE IN SERIES ADAPTERS



| Part number | Fig. | Captive center contact | Note |
|--------------|------|------------------------|--|
| R141 780 000 | 1 | Yes | Male / Female - Female tee |
| R141 782 000 | 2 | | Female / Female - Female tee |
| R141 789 000 | 3 | | Female / Female - Male tee |
| R141 799 000 | 4 | | Male / Female - Female - Female cross / Unit packaging |

MALE AND FEMALE CAPS



| Part number | Fig. | Note |
|--------------|------|---------------------------------|
| R141 802 000 | 1 | Male |
| R141 805 000 | 2 | Male with cord |
| R141 812 000 | 3 | Male with chain |
| R141 842 000 | 4 | Female with chain |
| R141 862 000 | 3 | Male short circuit / With chain |

Straight Plugs

STRAIGHT PLUGS CLAMP TYPE FOR FLEXIBLE CABLES

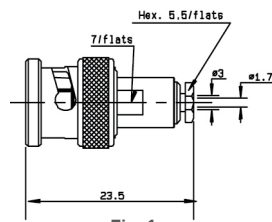
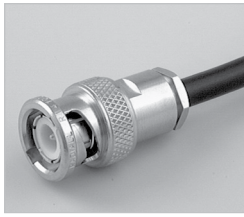


Fig. 1

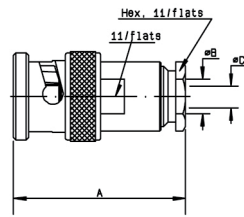


Fig. 2

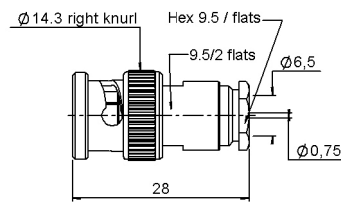


Fig. 3

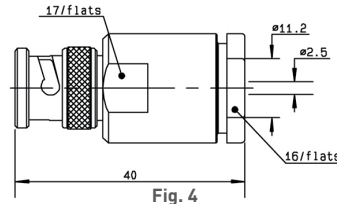


Fig. 4

| Cable group | Cable group dia. | Part number | Fig. | Dimensions (mm) | | | Captive center contact | Note |
|-----------------------------|------------------|---------------|------|-----------------|------|------|------------------------|--------------------|
| | | | | A | B | C | | |
| RG179 | 2.6/75/S | R142 004 000 | 1 | - | - | - | Yes | - |
| RG59 / RG62 | 6/75/S | R142 016 000 | 2 | 28 | 6.6 | 0.75 | - | Unit packaging |
| | | R142 016 161 | 3 | - | - | - | - | Commercial version |
| RG6A / U | 8/75/S + D | R142 017 000 | 2 | 45.5 | 9.1 | 1.5 | - | Unit packaging |
| RG216 / RG11 / RG12 / RG144 | 10 + 11/75/S + D | R142 018 000 | 4 | - | - | - | Yes | - |
| RG6A / U | GORE cable | 6500-7071-046 | 2 | 23.87 | 4.31 | 2.79 | - | - |

STRAIGHT PLUGS FULL CRIMP TYPE FOR FLEXIBLE CABLES

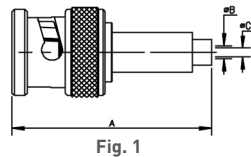


Fig. 1

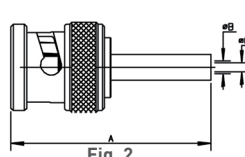


Fig. 2

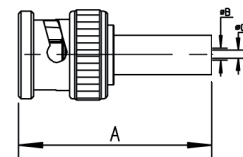
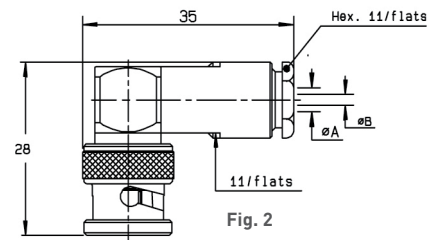
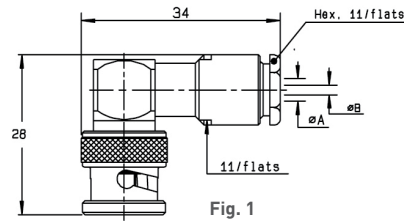
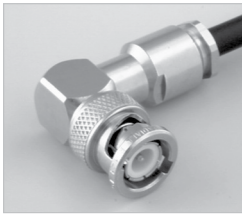


Fig. 3

| Cable group | Cable group dia. | Part number | Fig. | Dimensions (mm) | | | Captive center contact | Note | | |
|---------------------|------------------|---------------|------|-----------------|-------|------|------------------------|------------------------------------|----|--|
| | | | | A | B | C | | | | |
| RG179 | 2.6/75/S | R142 076 000 | 1 | 31 | 1.8 | 0.4 | Yes | - | | |
| | | R142 076 161 | 3 | 25.3 | 1.65 | 0.4 | No | Commercial version | | |
| | | R142A 076 161 | | 29 | 2.1 | 0.34 | - | Single piece body / ECO version | | |
| BT3002 | 3.6/75/D | R142 081 120 | 2 | 29 | 2.1 | 0.34 | Yes | Single piece body | | |
| | | R142 081 130 | | 29 | 2.1 | 0.34 | | Single piece body / Unit packaging | | |
| | | R142A 081 130 | | 29 | 2.1 | 0.34 | | Single piece body / ECO version | | |
| ST212 | - | R142 091 161 | 3 | 30 | 2.1 | 0.6 | Yes | - | | |
| BT2002 | 5/75/D | R142 083 000 | 2 | 27.3 | 5.5 | 0.75 | Yes | Single piece body | | |
| RG59 / RG62 | 6/75/S | R142 085 000 | | 28 | 6.6 | | | 0.75 | No | Single piece body / Commercial version |
| | | R142 085 161 | 28 | 3.9 | 30.8 | 5.15 | 1.35 | | | Single piece body / ECO version |
| | | R142A 085 161 | 29 | 4 | | | | | | 28 |
| - | 7/75/S | R142 086 161 | 3 | 30.8 | 5.15 | 1.35 | Yes | Single piece body | | |
| - | 7.5/75/D | R142 090 000 | 2 | 28 | 5.25 | 0.85 | Yes | Single piece body | | |
| RG11 / RG12 / RG144 | 10/75/S | R142 095 000 | | 28 | 11.05 | 1.35 | | | | |

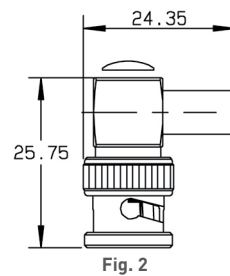
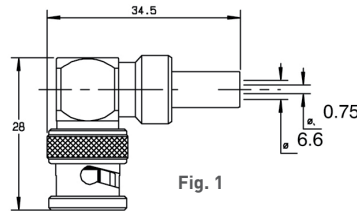
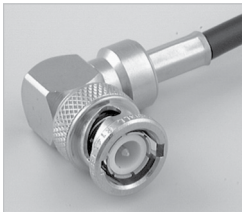
Right Angle Plugs and Jacks

RIGHT ANGLE PLUGS CLAMP TYPE FOR FLEXIBLE CABLES



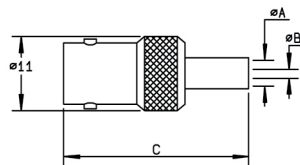
| Cable group | Cable group dia. | Part number | Fig. | Dimensions (mm) | | Captive center contact |
|-------------|------------------|--------------|------|-----------------|------|------------------------|
| | | | | A | B | |
| RG179 | 2.6/75/S | R142 154 000 | 1 | 3.1 | 0.6 | Yes |
| RG59 / RG62 | 6/75/S | R142 157 000 | 2 | 6.6 | 0.75 | |

RIGHT ANGLE PLUGS FULL CRIMP TYPE FOR FLEXIBLE CABLES



| Cable group | Cable group dia. | Part number | Fig. | Captive center contact | Note |
|-------------|------------------|--------------|------|------------------------|--------------------|
| RG59 / RG62 | 6/75/S | R142 184 000 | 1 | Yes | - |
| | | R142 184 161 | 2 | | Commercial version |

STRAIGHT JACKS FULL CRIMP TYPE FOR FLEXIBLE CABLES



| Cable group | Cable group dia. | Part number | Dimensions (mm) | | | Captive center contact | Note |
|-------------|------------------|--------------|-----------------|------|------|------------------------|--|
| | | | A | B | C | | |
| RG179 | 2.6/75/S | R142 217 000 | 1.75 | 0.4 | 32.5 | Yes | - |
| RG59 / RG62 | 6/75/S | R142 242 000 | 6.6 | 0.75 | 29.5 | | Single piece body |
| | | R142 242 161 | | | 29 | | Single piece body / commercial version |

Jacks and Bulkhead Jacks

STRAIGHT SQUARE FLANGE JACKS CLAMP TYPE FOR FLEXIBLE CABLES

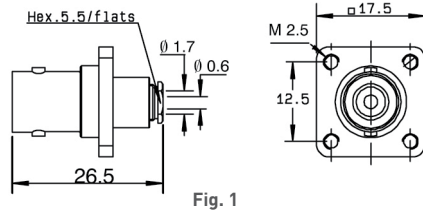
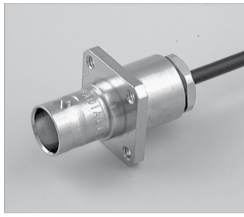


Fig. 1

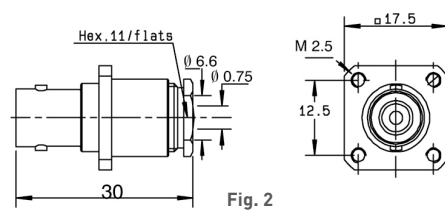
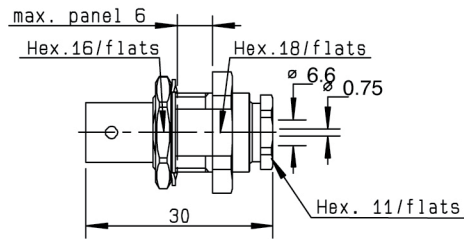


Fig. 2

| Cable group | Cable group dia. | Part number | Fig. | Captive center contact | Panel drilling | Note |
|-------------|------------------|--------------|------|------------------------|----------------|----------------|
| RG179 | 2.6/75/S | R142 202 000 | 1 | Yes | P01 | Unit packaging |
| RG59 / RG62 | 6/75/S | R142 268 000 | 2 | | | |

STRAIGHT BULKHEAD JACK CLAMP TYPE FOR FLEXIBLE CABLES



| Cable group | Cable group dia. | Part number | Captive center contact | Panel drilling | Note |
|-------------|------------------|--------------|------------------------|----------------|--------------|
| RG59 / RG62 | 6/75/S | R142 329 000 | Yes | P11 | Panel sealed |

STRAIGHT BULKHEAD JACKS CRIMP TYPE FOR FLEXIBLE CABLES

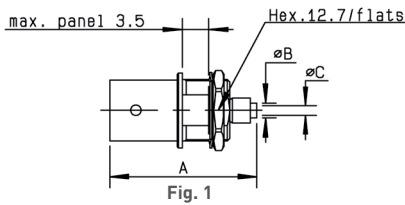


Fig. 1

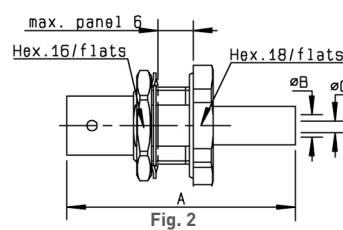


Fig. 2

| Cable group | Cable group dia. | Part number | Fig. | Dimensions (mm) | | | Captive center contact | Panel drilling | Note |
|-------------|------------------|---------------|------|-----------------|------|------|------------------------|----------------|---------------------------------------|
| | | | | A | B | C | | | |
| RG179 | 2.6/75/S | R142 306 500 | 1 | 26 | 2.95 | 0.4 | Yes | P14 | Reverse crimping / Commercial version |
| | | R142A 306 500 | | | | | No | | Reverse crimping / ECO version |
| | | R142 306 503 | | | | | Yes | | Reverse crimping |
| | | R142 331 011 | | | | | | | Panel sealed / Silver plated |
| BT3002 | 3.6/75/D | R142A 325 106 | 2 | 38 | 1.75 | 0.4 | No | P11 or P16 | Panel sealed / ECO version |
| RG59 / RG62 | 6/75/S | R142 334 161 | | 36 | 2.1 | 0.5 | Yes | | Panel sealed / Commercial version |
| | | R142A 334 161 | | 35 | 6.6 | 0.75 | | | Panel sealed / ECO version |
| | | R142A 334 161 | | 35 | 3.8 | 0.7 | | | Panel sealed / ECO version |

Receptacles

RECEPTACLES WITH SOLDER POT

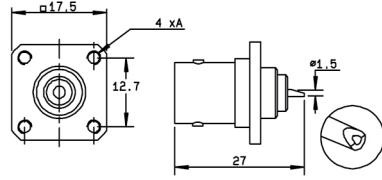


Fig. 1

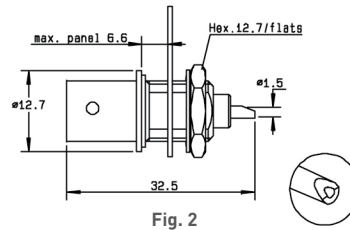
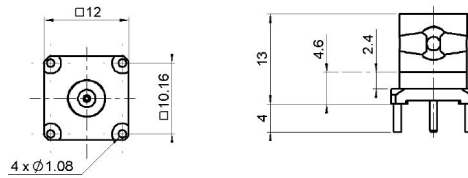
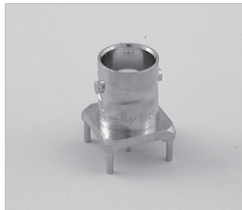


Fig. 2



| Part number | Fig. | Captive center contact | Panel drilling | Flange holes A | Note |
|--------------|------|------------------------|----------------|----------------|--|
| R142 412 000 | 1 | Yes | P06 | 4 x M2.5 | Square flange + Unit packaging |
| R142 562 000 | 2 | | P14 | - | Bulkhead female receptacle Unit packaging |

STRAIGHT PCB FEMALE RECEPTACLES



| Part number | Captive center contact | Panel drilling |
|--------------|------------------------|----------------|
| R142 426 000 | Yes | P08 |

RIGHT ANGLE PCB FEMALE RECEPTACLE

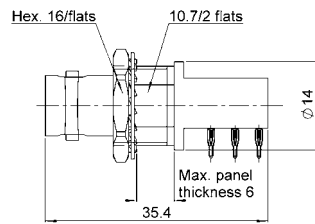


Fig. 1

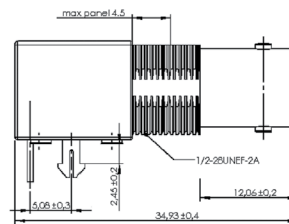


Fig. 2

| Part number | Fig. | Captive center contact | Panel drilling | Note |
|--------------|------|------------------------|----------------|----------------|
| R142 684 130 | 1 | Yes | P09 and P16 | Press-fit pins |
| R142 676 430 | 2 | | Yes | Harpoon legs |

Adapters

IN SERIES ADAPTERS

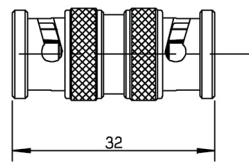


Fig. 1

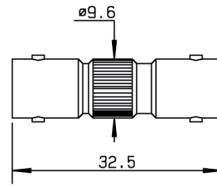


Fig. 2

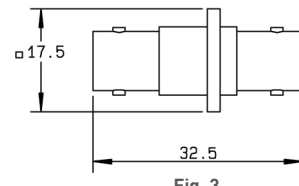


Fig. 3

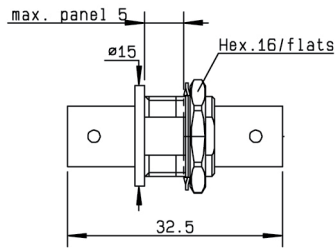


Fig. 4

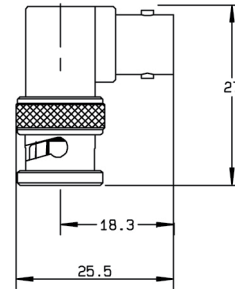


Fig. 5

| Part number | Fig. | Captive center contact | Panel drilling | Note |
|--------------|------|------------------------|----------------|------------------------------------|
| R142 703 000 | 1 | Yes | - | Male - Male |
| R142 704 000 | 2 | | - | Female - Female |
| R142 710 000 | 3 | | P01 | Female - Female square flange |
| R142 720 000 | 4 | | P11 | Female - Female bulkhead |
| R142 723 000 | 4 | | P11 or P16 | Female - Female insulated bulkhead |
| R142 770 000 | 5 | - | - | Male - Female right angle |

TEE IN SERIES ADAPTERS

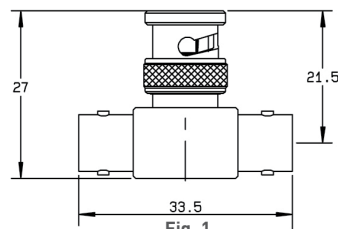


Fig. 1

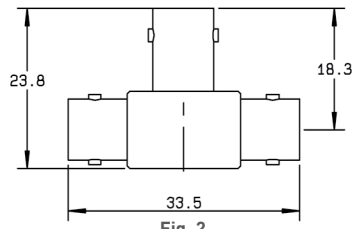


Fig. 2

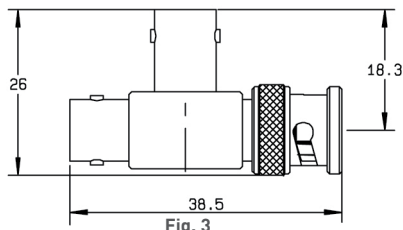


Fig. 3

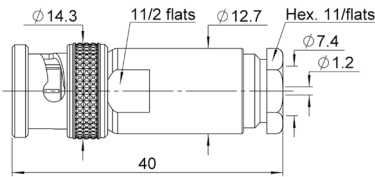
| Part number | Fig. | Captive center contact | Note |
|--------------|------|------------------------|------------------------------|
| R142 780 000 | 1 | Yes | Male / Female - Female tee |
| R142 782 000 | 2 | | Female / Female - Female tee |
| R142 789 000 | 3 | | Female / Female - Male tee |

Characteristics

| Test / Characteristics | Values / Remarks | |
|--|---|---|
| Frequency range | DC - 10 GHz | |
| Impedance | 50Ω | |
| Working voltage | 500 Vrms | |
| Dielectric withstanding voltage <ul style="list-style-type: none"> • Between center conductor and inner screen • Between inner screen and outer screen | Unmated connector 1500 Vrms 1000 Vrms | Mated connector 3000 Vrms 1000 Vrms |
| Temperature range | -55°C / +125°C | |

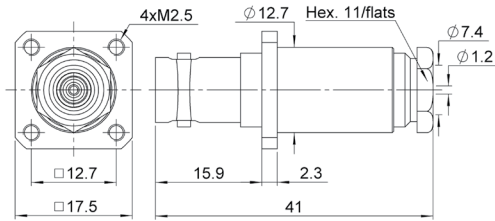
Plug, Jack and Receptacle

STRAIGHT PLUG CLAMP TYPE



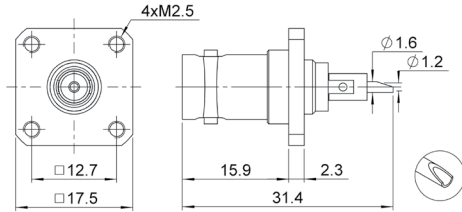
| Cable group dia. | Part number |
|------------------|--------------|
| 7.3 / 50 / D | R266 010 000 |

STRAIGHT JACK CLAMP TYPE



| Cable group dia. | Part number | Panel Drilling |
|------------------|--------------|----------------|
| 7.3 / 50 / D | R266 260 000 | P10 |

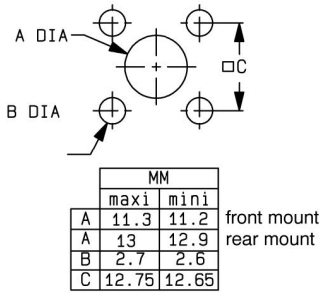
RECEPTACLE



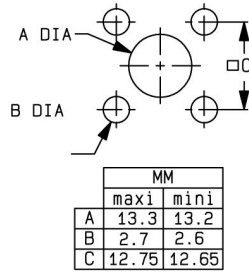
| Part number | Panel Drilling |
|--------------|----------------|
| R266 403 000 | P10 |

Panel Drilling

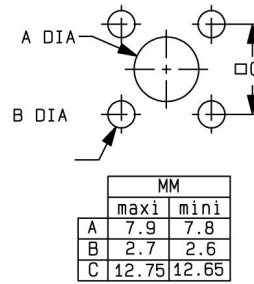
P01



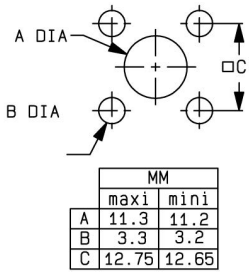
P02



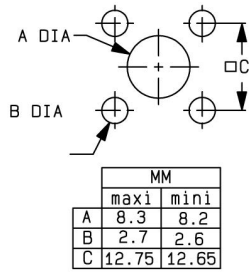
P03



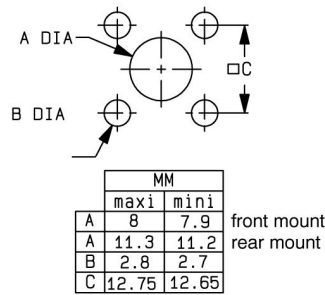
P04



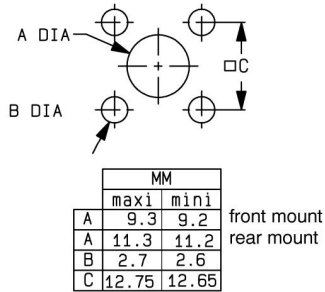
P05



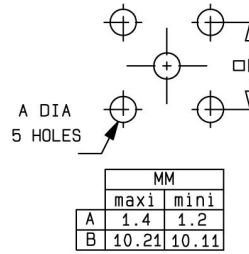
P06



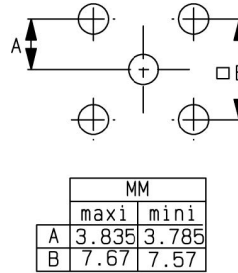
P07



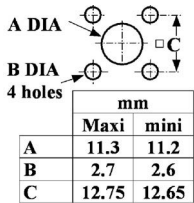
P08



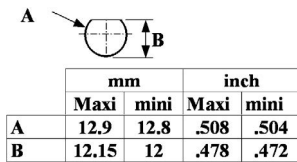
P09



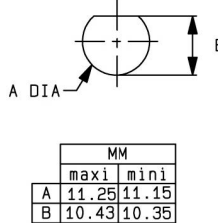
P10



P11

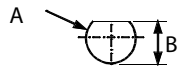


P12



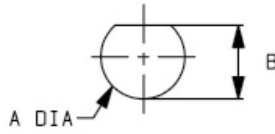
Panel Drilling

P13



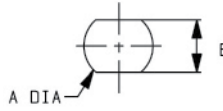
| mm | | |
|----|-------|-------|
| | Maxi | mini |
| A | 12.9 | 12.8 |
| B | 12.04 | 11.94 |

P14



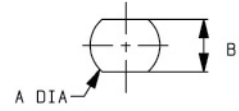
| MM | | |
|----|------|------|
| | maxi | mini |
| A | 9.7 | 9.6 |
| B | 8.9 | 8.8 |

P15



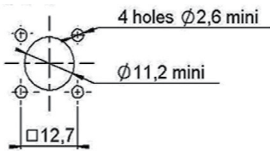
| MM | | |
|----|------|------|
| | maxi | mini |
| A | 9.75 | 9.65 |
| B | 8.65 | 8.55 |

P16

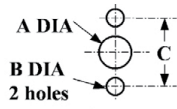


| MM | | |
|----|------|------|
| | maxi | mini |
| A | 12.8 | 12.7 |
| B | 10.9 | 10.8 |

P17

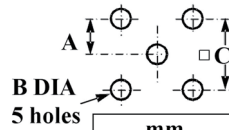


P18



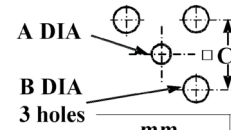
| mm | | |
|--------------|------|------|
| | Maxi | mini |
| A (F. Mount) | 9 | 8.9 |
| A (R. Mount) | 11.3 | 11.2 |
| B | 3.4 | 3.3 |
| C | 18.1 | 18 |

P19



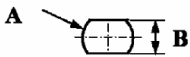
| mm | | |
|----|-------|-------|
| | Maxi | mini |
| A | 5.105 | 5.055 |
| B | 1.4 | 1.2 |
| C | 10.21 | 10.11 |

P20



| mm | | |
|----|------|------|
| | Maxi | mini |
| A | 1.15 | 1.05 |
| B | 2.26 | 2.16 |
| C | 6.96 | 6.76 |

P21



| mm | | |
|----|------|------|
| | Maxi | mini |
| A | 10.2 | 10.0 |
| B | 9.3 | 9.2 |

X-ON Electronics

Largest Supplier of Electrical and Electronic Components

Click to view similar products for [RF Connectors / Coaxial Connectors](#) category:

Click to view products by [Radiall](#) manufacturer:

Other Similar products are found below :

[8915-1511-000](#) [89674-0827](#) [6001-7071-019](#) [6002-7051-003](#) [6002-7551-202](#) [6059674-1](#) [619550-1](#) [630059-000](#) [M39030/3-01N](#) [6500-7071-046](#) [6769](#) [CX050L2AQ](#) [7002-1541-010](#) [7002-1542-011](#) [7004-1512-000](#) [7009-1511-004](#) [7010-1511-000](#) [7029-1511-060](#) [7101-1541-010](#) [7101-1571-002](#) [7145-1521-002](#) [7203-1571-003](#) [7209-1511-011](#) [7210-1511-015](#) [7210-1511-019](#) [73137-5015](#) [73216-2241](#) [73404-2300](#) [7405-1521-005](#) [7405-1521-802](#) [8527](#) [8547](#) [FS11V](#) [877931](#) [9049-9513-000](#) [9074-9513-000](#) [9101-9573-002](#) [910A205F](#) [9130-9573-002](#) [PL11SC-026](#) [PL375-33](#) [PL40-5](#) [PL74C-221](#) [PL75MC-217](#) [PL803-7](#) [980-8666-005](#) [1200690078](#) [1-201144-1](#) [R107003010W](#) [R110A172100](#)