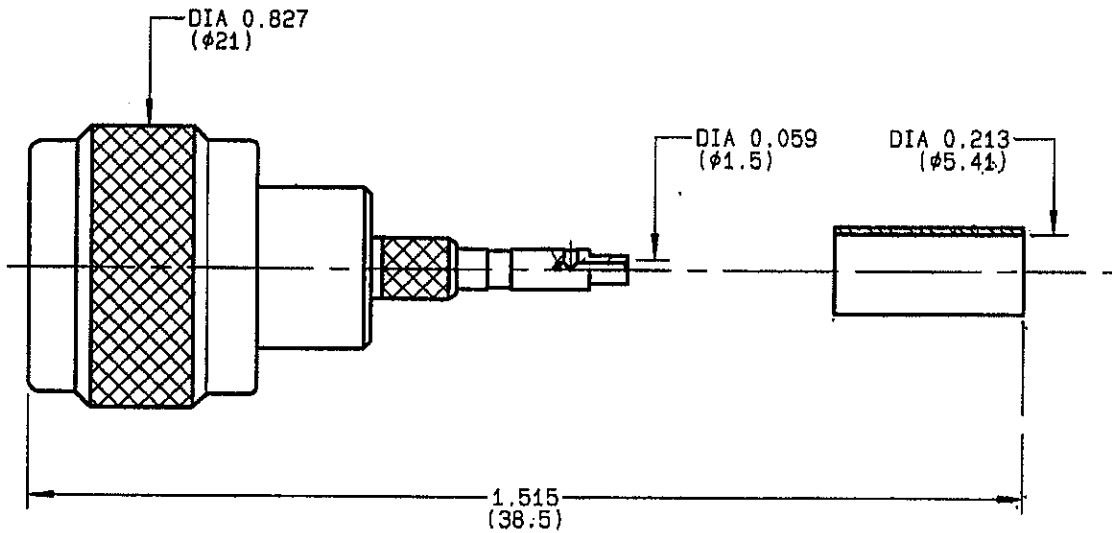


**STRAIGHT PLUG FULL CRIMP-TYPE  
CABLE 5/50 S LMR200**

**R161.082.200**  
SERIES **N**



NOMINAL IMPEDANCE	<b>50</b> $\Omega$
FREQUENCY RANGE	<b>0-11</b> GHz
TEMPERATURE RATING	<b>-55/+155</b> °C
V.S.W.R	<b>1.30</b> + x f(GHz)Maxi
RF INSERTION LOSS	<b>0.048</b> $\sqrt{f}$ (GHz) dB Maxi
VOLTAGE RATING	<b>850</b> Veff Maxi
DIELECTRIC WITHSTANDING VOLTAGE	<b>1500</b> Veff Mini
INSULATION RESISTANCE	<b>5000</b> M $\Omega$ Mini
HERMETIC SEAL	<b>NA</b> Atm.cm <sup>3</sup> /s
LEAKAGE (pressurized only)	<b>NA</b>
MECHANICAL DURABILITY	<b>500</b> Cycles
WEIGHT	<b>28.6</b> gr
SPECIFICATION	

<b>CABLES LMR 200</b>	
<b>OTHERS CHARACTERISTICS</b>	
CABLE RETENTION	<b>150</b> N Mini
<b>CENTER CONTACT RETENTION</b>	
Axial force - mating end	<b>27</b> N Mini
Axial force - opposite end	<b>27</b> N Mini
Torque	<b>NA</b> cm.N Mini
<b>RECOMMENDED TORQUES</b>	
Mating	<b>130</b> cm.N
Panel nut	<b>NA</b> cm.N
Clamp nut	<b>NA</b> cm.N

CONNECTOR PARTS	MATERIALS	FINISH	(all values are given in micrometers)
BODY	BRASS	BBR 2	
OUTER CONTACT	BRASS	BBR 2	
CENTER CONTACT	BRASS	GOLD 0.5 OVER NICKEL 2	
INSULATOR	PTFE	-	
GASKET	SILICONE RUBBER	-	
OTHERS PIECES	BRASS	BBR 2	

ISSUE <b>9812A01</b>	CREATION DATE <b>08-APR-97</b>	FILE PART-NUMBER <b>EPC 96-07</b>
-------------------------	-----------------------------------	--------------------------------------



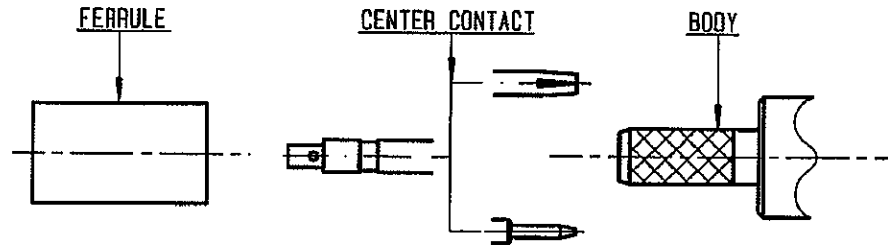
**RADIALL®**

The information given here is subject to change without notice.



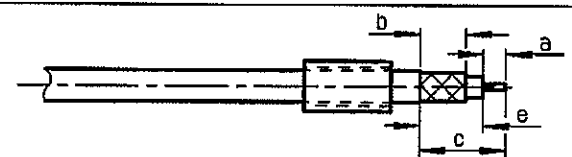
**R161.082.200**

ISSUE 9812A01 SERIES N



①

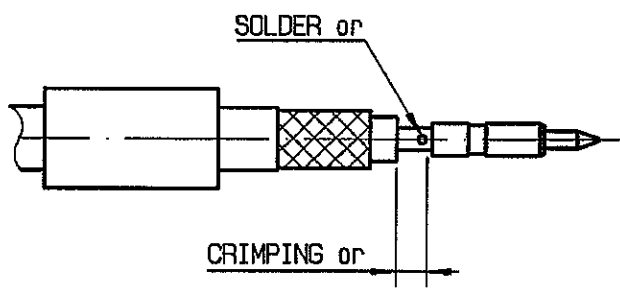
Slide onto the cable the ferrule .  
Strip the cable .  
-  
-  
-



Stripping	a	b	c	d	e
inch	0.177	0.315	0.551	0	0.374
mm	4.5	8	14		9.5

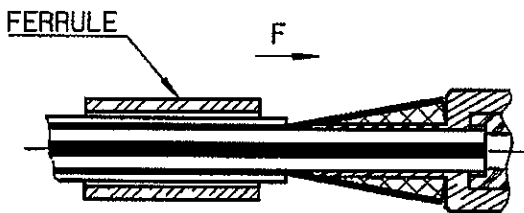
②

Slide on center contact until it bottoms against cable dielectrique .  
Solder or crimp center contact .  
Crimping tool :R 282 223 000 (hex.:.068)  
or R282 293 000 (M22520/5-01) +  
dies R282 235 011 (M22520/5-11)  
( We advice to solder center contact to improve electrical performances)



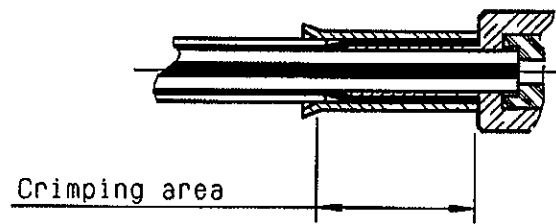
③

Fan the braid.  
Slide cable into the body until bottoms against insulator .  
Slide ferrule over the braid .  
(In direction F)



④

Crimp the ferrule with crimping tool R 282 223 000 ( Hex. : .213 ) or orimping tool M22520/5-01 (R 282 293 000) + dies M22520/5-11 ( R 282 235 011 )  
Cut the excess of braid .



D. PIGNONCHON

The information given here is subject to change without notice. Design changes may be in order to improve the product.

## X-ON Electronics

Largest Supplier of Electrical and Electronic Components

*Click to view similar products for [RF Connectors / Coaxial Connectors](#) category:*

*Click to view products by [Radiall](#) manufacturer:*

Other Similar products are found below :

[8915-1511-000](#) [89674-0827](#) [6001-7071-019](#) [6002-7051-003](#) [6002-7551-202](#) [6059674-1](#) [619550-1](#) [630059-000](#) [M39030/3-01N](#) [6500-7071-046](#) [6769](#) [CX050L2AQ](#) [7002-1541-010](#) [7002-1542-011](#) [7004-1512-000](#) [7009-1511-004](#) [7010-1511-000](#) [7029-1511-060](#) [7101-1541-010](#) [7101-1571-002](#) [7145-1521-002](#) [7203-1571-003](#) [7209-1511-011](#) [7210-1511-015](#) [7210-1511-019](#) [73137-5015](#) [73216-2241](#) [73404-2300](#) [7405-1521-005](#) [7405-1521-802](#) [8527](#) [8547](#) [FS11V](#) [877931](#) [8808-1511-001](#) [9074-9513-000](#) [9101-9573-002](#) [910A205F](#) [9130-9573-002](#) [PL11SC-026](#) [PL375-33](#) [PL40-5](#) [PL74C-221](#) [PL75MC-217](#) [PL803-7](#) [1200690078](#) [1-201144-1](#) [R107003010W](#) [R110A172100](#) [R112186000](#)