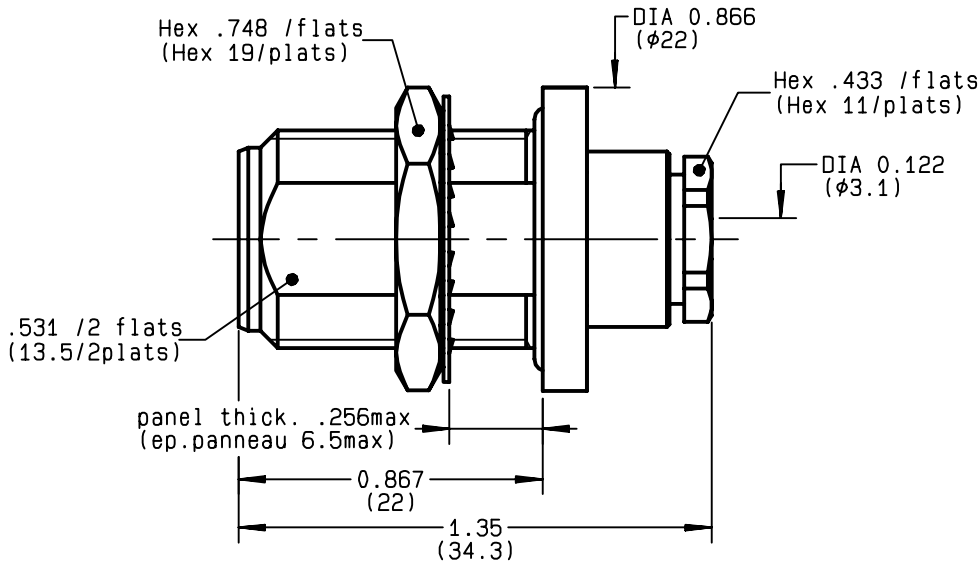
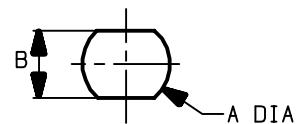


**STRAIGHT BULKHEAD JACK PANEL SEAL  
CLAMP TYPE - CABLE 2.6/50+75**

**R161.322.000**  
**SERIES N**



PERCAGE PANNEAU  
MOUNTING HOLE



	MM		INCH	
	maxi	mini	maxi	mini
A	16.1	16	0.634	0.63
B	13.7	13.6	0.539	0.535

NOMINAL IMPEDANCE	<b>50</b>	Ω
FREQUENCY RANGE	<b>0-11</b>	GHz
TEMPERATURE RATING	<b>-55/+155</b>	°C
V.S.W.R	<b>1.40*</b>	+ x F(GHz)Maxi
RF INSERTION LOSS	<b>0.048</b>	√F(GHz) dB Maxi
VOLTAGE RATING	<b>250</b>	Veff Maxi
DIELECTRIC WITHSTANDING VOLTAGE	<b>750</b>	Veff Mini
INSULATION RESISTANCE	<b>5000</b>	M ΩMini
HERMETIC SEAL	<b>NA</b>	Atm.cm <sup>3</sup> /s
LEAKAGE (pressurized only)	<b>IP 67</b>	
MECHANICAL DURABILITY	<b>500</b>	Cycles
WEIGHT	<b>41.1</b>	gr
SPECIFICATION		

- CABLES : **K02252D**  
**K02252D SPL**  
**KX 22A**  
**RD 316**  
**RG 179**  
**RG 187**  
**RG 188**  
**RG 316**

OTHERS CHARACTERISTICS

**\* pour cablage sur 50 ohms**

CABLE RETENTION	<b>40</b>	N Mini
CENTER CONTACT RETENTION		
Axial force - mating end	<b>27</b>	N Mini
Axial force - opposite end	<b>27</b>	N Mini
Torque	<b>NA</b>	cm.N Mini
RECOMMENDED TORQUES		
Mating	<b>NA</b>	cm.N
Panel nut	<b>500</b>	cm.N
Clamp nut	<b>150</b>	cm.N

CONNECTOR PARTS	MATERIALS	FINISH	(all values are given in micrometers)
BODY	BRASS	BBR 2	
OUTER CONTACT	BRASS	BBR 2	
CENTER CONTACT	BERYLLIUM COPPER	GOLD 0.5 OVER NICKEL 2	
INSULATOR	PTFE	-	
GASKET	SILICONE RUBBER	-	
OTHERS PIECES	BRASS	BBR 2	

BONOMINI

ISSUE <b>0306J00</b>	CREATION DATE <b>12/10/1992</b>	FILE PART-NUMBER
-------------------------	------------------------------------	------------------



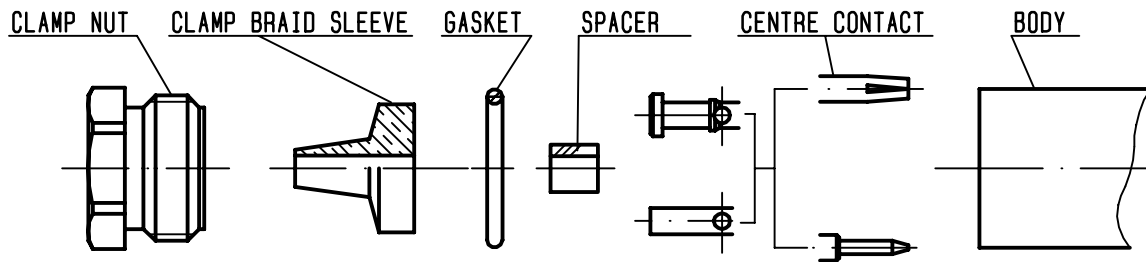
The information given here is subject to change without notice. Design changes may be in order to improve the product.

*Connect to the future*



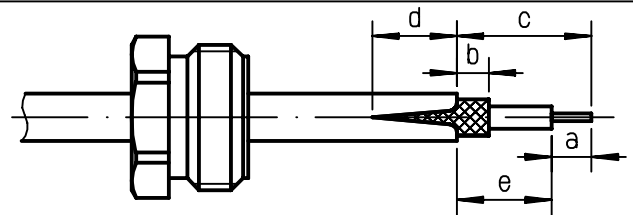
**R161.322.000**

ISSUE **0306J00** SERIES **N**



①

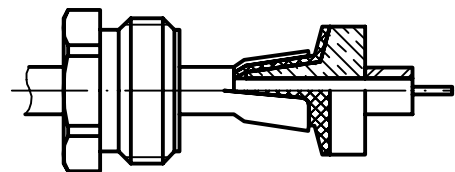
Slide clamp nut onto cable .  
Strip the cable .  
Cut the jacket ( 2 slots )  
apart if necessary .  
-



Stripping	a	b	c	d	e
inch	0.157	0.079	0.315	0.079	0.157
mm	4	2	8	2	4

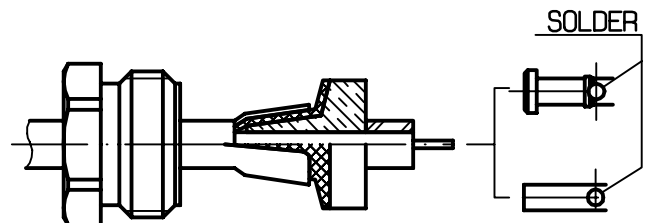
②

Slide the clamp braid sleeve between  
cable dielectric and braid .  
Cut the braid flush with the clamp  
braid sleeve .  
Slide the spacer .  
-



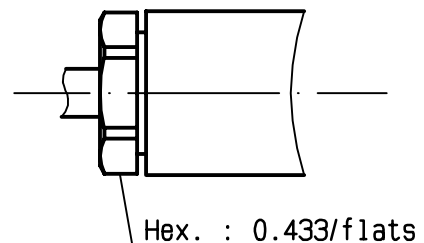
③

Solder the cable inner conductor into  
centre contact .  
Slide the back nut over the clamp  
assembly .  
-  
-  
-



④

Mount the gasket into the connector .  
Screw sub-assembly into the connector  
body .  
( recommended coupling torque 13.27 in.lb )  
-



## X-ON Electronics

Largest Supplier of Electrical and Electronic Components

*Click to view similar products for [RF Connectors / Coaxial Connectors](#) category:*

*Click to view products by [Radiall](#) manufacturer:*

Other Similar products are found below :

[8915-1511-000](#) [89674-0827](#) [6001-7071-019](#) [6002-7051-003](#) [6002-7551-202](#) [6059674-1](#) [619550-1](#) [630059-000](#) [M39030/3-01N](#) [6500-7071-046](#) [6769](#) [CX050L2AQ](#) [7002-1541-010](#) [7002-1542-011](#) [7004-1512-000](#) [7009-1511-004](#) [7010-1511-000](#) [7029-1511-060](#) [7101-1541-010](#) [7101-1571-002](#) [7145-1521-002](#) [7203-1571-003](#) [7209-1511-011](#) [7210-1511-015](#) [7210-1511-019](#) [73137-5015](#) [73216-2241](#) [73404-2300](#) [7405-1521-005](#) [7405-1521-802](#) [8527](#) [8547](#) [FS11V](#) [877931](#) [8808-1511-001](#) [9049-9513-000](#) [9074-9513-000](#) [9101-9573-002](#) [910A205F](#) [9130-9573-002](#) [PL11SC-026](#) [PL375-33](#) [PL40-5](#) [PL74C-221](#) [PL75MC-217](#) [PL803-7](#) [980-8666-005](#) [1200690078](#) [1-201144-1](#) [R107003010W](#)