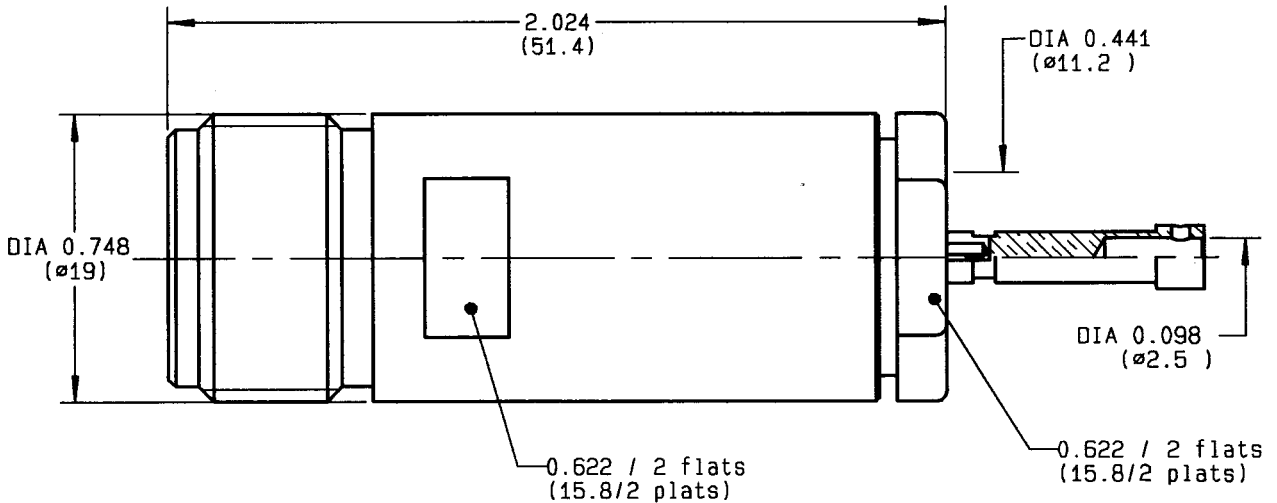


STRAIGHT CABLE JACK-CLAMP TYPE  
CABLE 10+11/50

Series : HN

1 / 2



CABLES : -

CHARACTERISTICS

NOMINAL IMPEDANCE	50	Ω
FREQUENCY RANGE	0-2	GHz
TEMPERATURE RATING	-55/+155	°C
VSWR	1.25 +	0 x F(GHz)Maxi
RF INSERTION LOSS	TBD	√F(GHz) dB Maxi
VOLTAGE RATING	1500	Vrms Max
DIELECTRIC WITHSTANDING VOLTAGE	5000	Vrms min
INSULATION RESISTANCE	5000	MΩ min
HERMETIC SEAL	-	cc/s NA Atm.cm3/s
LEAKAGE (pressurized only)	-	psi NA MPa
WEIGHT	2.3571	Oz 66 g

STANDARDISATION

CABLE RETENTION	67.36	lb min
CENTER CONTACT RETENTION	300	N
Axial force - mating end	0	lb mi.
Axial force - opposite end	0	lb min
Torque (Min)	0	Inch.oz cm.N
RECOMMENDED TORQUES		
Mating	0	inch.lb cm.N
Panel nut	0	inch.lb cm.N
Clamp nut	70.8	inch.lb 800 cm.N

CONSTRUCTION

CONNECTOR PARTS	MATERIALS	FINISH
BODY	BRASS	NICKEL
OUTER CONTACT	-	-
CENTER CONTACT	BERYLLIUM COPPER	SILVER
INSULATOR	PTFE	-
-	-	-
-	-	-
-	-	-
-	-	-
-	-	-

ISSUE	REVISION No	DESCRIPTION	BY	DATE
-	-	-	-	-
-	-	-	-	-
-	-	-	-	-
-	-	-	-	-

Initiated on 19/12/94

The information given here is subject to change without notice. Design changes may be in order to improve the product.



Approval by BAFFERT

GAUTIER

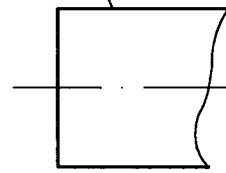
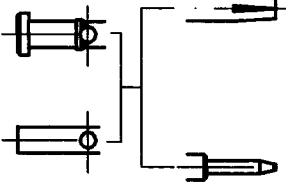
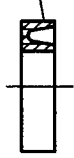
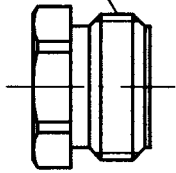
CLAMP NUT

'V' GROOVE GASKET

CLAMP BRAID SLEEVE

CENTRE CONTACT

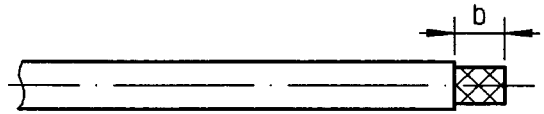
BODY



①

Strip the cable .

-  
-  
-



Stripping	a	b	c	d	e
inch	0.236	0.453	0	0	0.138
mm	6	11.5	-	-	3.5

②

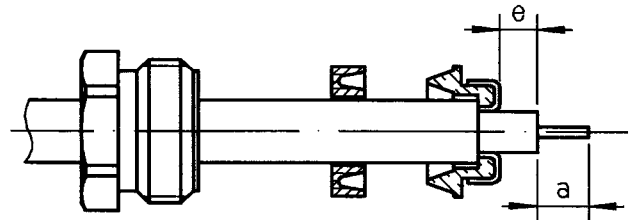
Slide the clamp nut and the 'V' groove gasket onto the cable .

Slide clamp braid sleeve over braid .

Fold back braid and trim off surplus braid .

Trim back dielectric as shown .

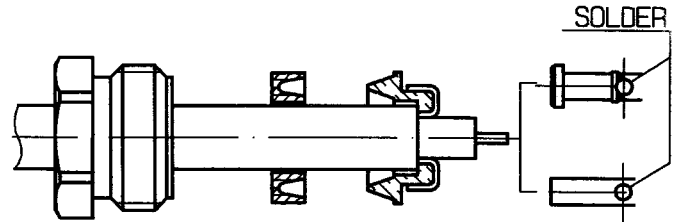
-  
-  
-



③

Solder the cable inner conductor into centre contact .

-  
-  
-  
-  
-

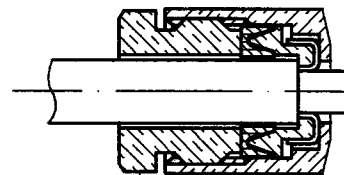


④

Screw sub-assembly into the connector body .

( recommended coupling torque 70.8 in.lb )

-  
-



Hex. : 0.622/flats

4112 9211

## X-ON Electronics

Largest Supplier of Electrical and Electronic Components

*Click to view similar products for [RF Connectors](#) / [Coaxial Connectors](#) category:*

*Click to view products by [Radiall](#) manufacturer:*

Other Similar products are found below :

[8915-1511-000](#) [89674-0827](#) [6001-7071-019](#) [6002-7051-003](#) [6002-7551-202](#) [6059674-1](#) [619550-1](#) [630059-000](#) [M39030/3-01N](#) [6500-7071-046](#) [6769](#) [CX050L2AQ](#) [7002-1541-010](#) [7002-1542-011](#) [7004-1512-000](#) [7009-1511-004](#) [7010-1511-000](#) [7029-1511-060](#) [7101-1541-010](#) [7101-1571-002](#) [7145-1521-002](#) [7203-1571-003](#) [7209-1511-011](#) [7210-1511-015](#) [7210-1511-019](#) [73137-5015](#) [73216-2241](#) [73404-2300](#) [7405-1521-005](#) [7405-1521-802](#) [8527](#) [8547](#) [FS11V](#) [877931](#) [8808-1511-001](#) [9049-9513-000](#) [9074-9513-000](#) [9101-9573-002](#) [910A205F](#) [9130-9573-002](#) [PL11SC-026](#) [PL375-33](#) [PL40-5](#) [PL74C-221](#) [PL75MC-217](#) [PL803-7](#) [1200690078](#) [1-201144-1](#) [R107003010W](#) [R110A172100](#)