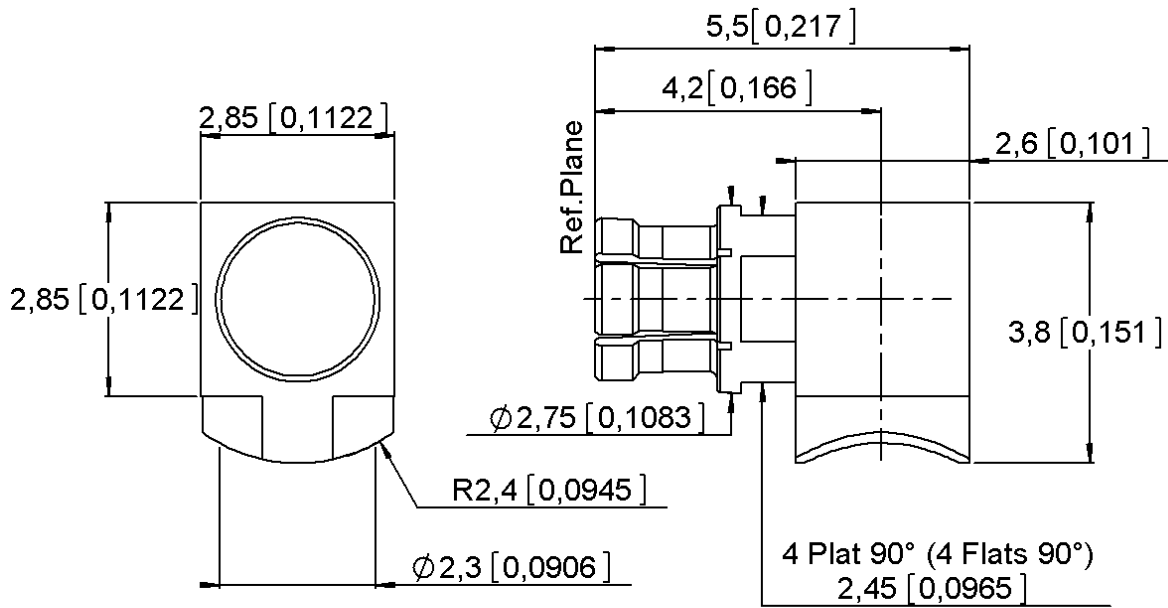
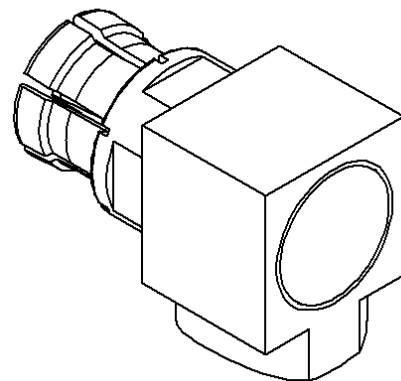


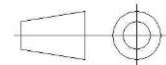
| | | | |
|----------|-----------------|-------------|------------------------|
| PAGE 1/3 | ISSUE 08-06-15A | SERIES SMPM | PART NUMBER R201152000 |
|----------|-----------------|-------------|------------------------|



Scale : 1/1



All dimensions are in mm.



| COMPONENTS | MATERIALS | PLATING (μm) |
|----------------|-------------------------|------------------------------|
| Body | BERYLLIUM COPPER | GOLD 1.3 OVER NICKEL2 |
| Center contact | BERYLLIUM COPPER | GOLD 1.3 OVER NICKEL2 |
| Outer contact | - | - |
| Insulator | PEEK | |
| Gasket | - | |
| Others parts | BRASS | GOLD 1.3 OVER NICKEL2 |
| - | - | - |
| - | - | - |

| | | | |
|-----------------|------------------------|--------------------|-------------------------------|
| PAGE 2/3 | ISSUE 08-06-15A | SERIES SMPM | PART NUMBER R201152000 |
|-----------------|------------------------|--------------------|-------------------------------|

PACKAGING

| | | |
|------------|-------------------|-------------------|
| Standard | Unit | Other |
| 100 | Contact us | Contact us |

ELECTRICAL CHARACTERISTICS

| | | |
|---------------------------------|----------------------|--------------------------|
| Impedance | 50 | Ω |
| Frequency | 0-18 | GHz |
| VSWR | *1.3 + 0,0000 | x F(GHz) Maxi |
| Insertion loss | 0.12 | \sqrt{F} (GHz) dB Maxi |
| RF leakage | - (NA) | - F(GHz)) dB Maxi |
| Voltage rating | 335 | Veff Maxi |
| Dielectric withstanding voltage | 500 | Veff mini |
| Insulation resistance | 5000 | M Ω mini |

MECHANICAL CHARACTERISTICS

| | | |
|----------------------------|---------------|-------------|
| Center contact retention | | |
| Axial force – Mating End | 6.7 | N mini |
| Axial force – Opposite end | 6.7 | N mini |
| Torque | NA | N.cm mini |
| Recommended torque | | |
| Mating | NA | N.cm |
| Panel nut | NA | N.cm |
| Clamp nut | NA | N.cm |
| A/F clamp nut | 0,0000 | mm |
| Mating life | 500 | Cycles mini |
| Weight | 0,1800 | g |

ENVIRONMENTAL

| | | |
|-----------------------|-----------------|--------------------|
| Operating temperature | -40/+125 | $^{\circ}\text{C}$ |
| Hermetic seal | NA | Atm.cm3/s |
| Panel leakage | NA | |

SPECIFICATION

CABLE ASSEMBLY

| Stripping | a | b | c | d | e | f |
|-----------|-------------|----------|----------|----------|----------|----------|
| mm | 1,78 | 0 | 0 | 0 | 0 | 0 |

Assembly instruction:

Recommended cable(s)

RG 405
SHF2.4M

Characteristics indicated on this data sheet are those that can be achieved with the highest performance cable. Intrinsic limitations of the cable may diminish the performance of the assembly

Cable retention

| | | |
|------------|------------|--------|
| - pull off | 130 | N mini |
| - torque | NA | N.cm |

TOOLING

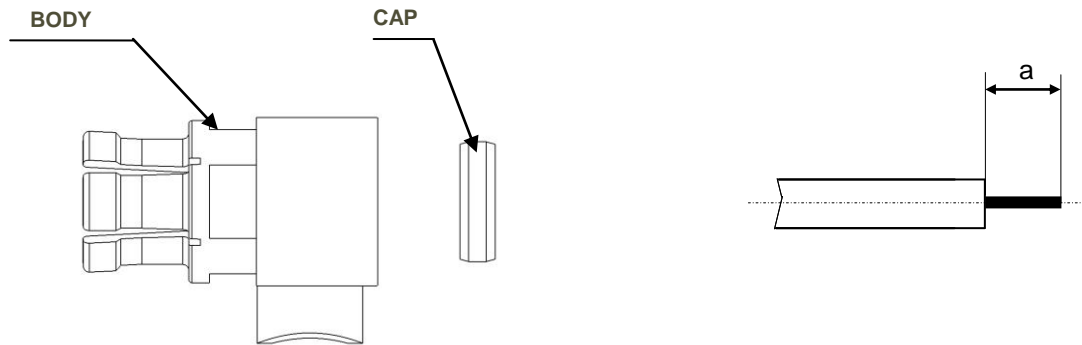
| Part Number | Description | Hexagon |
|-------------|--------------------|---------|
| R282740020 | SOLDERING MOUNTING | |

OTHER CHARACTERISTICS

***VSWR 1.25 TO 12 GHz**

| | | | |
|----------|-----------------|-------------|------------------------|
| PAGE 3/3 | ISSUE 08-06-15A | SERIES SMPM | PART NUMBER R201152000 |
|----------|-----------------|-------------|------------------------|

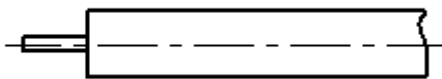
COMPONENT



We recommend a cable thermal preconditioning before assembly

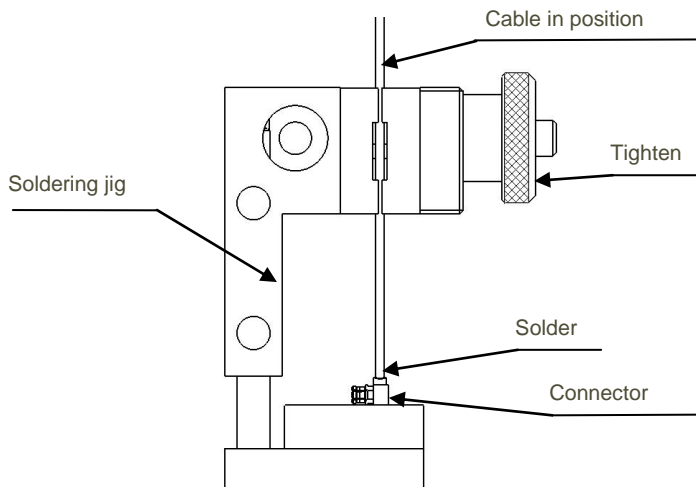
1

- Strip the cable.
- Clean the cable



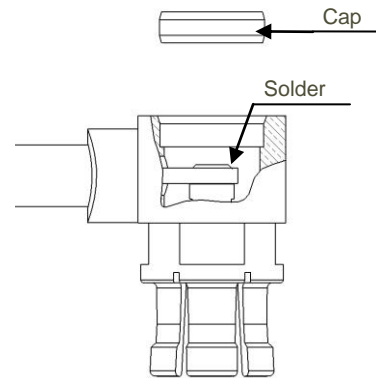
2

- Introduce the cable into the connector body until it stops.
- Place the sub assembly into the assembly and tighten it .
- Solder the body onto the cable.
- After cooling remove cable assembly from the jig.



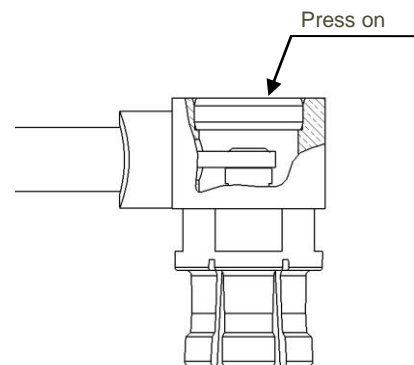
3

- Solder cable inner conductor into the centre contact.
- Clean soldering area



4

- Put the cap in its place.
- Press cap flush or slightly below surface of body assembly.



X-ON Electronics

Largest Supplier of Electrical and Electronic Components

Click to view similar products for [RF Connectors / Coaxial Connectors](#) category:

Click to view products by [Radiall](#) manufacturer:

Other Similar products are found below :

[8915-1511-000](#) [89674-0827](#) [6001-7071-019](#) [6002-7051-003](#) [6002-7551-202](#) [6059674-1](#) [619550-1](#) [630059-000](#) [M39030/3-01N](#) [6500-7071-046](#) [6769](#) [CX050L2AQ](#) [7002-1541-010](#) [7002-1542-011](#) [7004-1512-000](#) [7009-1511-004](#) [7010-1511-000](#) [7029-1511-060](#) [7101-1541-010](#) [7101-1571-002](#) [7105-1521-002](#) [7145-1521-002](#) [7203-1571-003](#) [7209-1511-011](#) [7210-1511-015](#) [7210-1511-019](#) [73137-5015](#) [73216-2241](#) [73404-2300](#) [7405-1521-005](#) [7405-1521-802](#) [8527](#) [8547](#) [FS11V](#) [877931](#) [8808-1511-001](#) [9074-9513-000](#) [9101-9573-002](#) [910A205F](#) [9130-9573-002](#) [PL11SC-026](#) [PL375-33](#) [PL40-5](#) [PL74C-221](#) [PL75MC-217](#) [PL803-7](#) [1200690078](#) [1-201144-1](#) [R107003010W](#) [R110A172100](#)