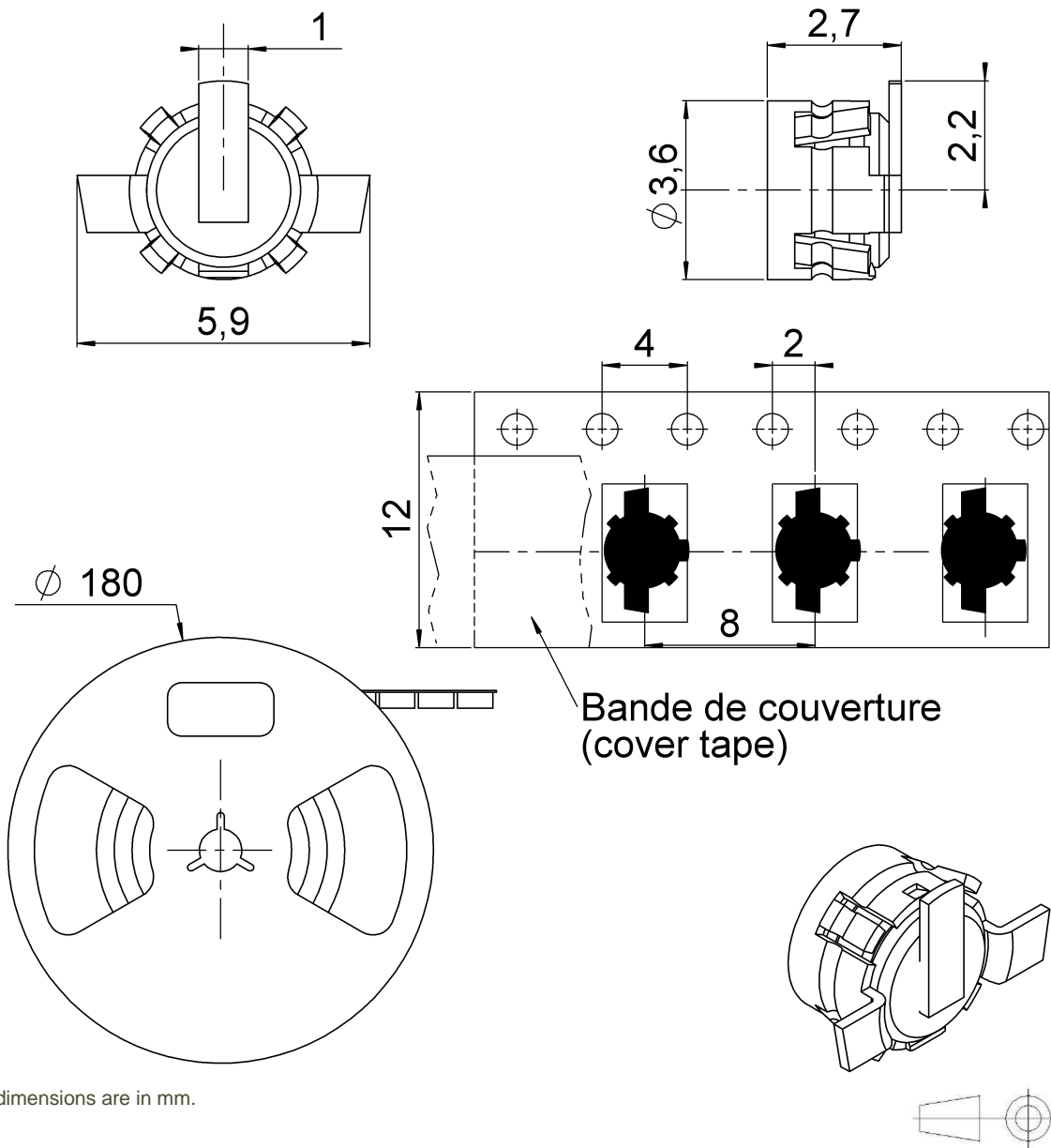


PAGE 1/4	ISSUE 10-11-15A	SERIES MMT	PART NUMBER R210408012
----------	-----------------	------------	------------------------



All dimensions are in mm.

COMPONENTS	MATERIALS	PLATING (µm)
Body	PHOSPHOR BRONZE	GOLD 0.2 OVER NICKEL 2
Center contact	BRASS	GOLD 0.2 OVER NICKEL 2
Outer contact	PHOSPHOR BRONZE	GOLD 0.2 OVER NICKEL 2
Insulator	PTFE	GOLD 0.2 OVER NICKEL 2
Gasket	-	-
Others parts	-	-
-	-	-
-	-	-

PAGE 2/4	ISSUE 10-11-15A	SERIES MMT	PART NUMBER R210408012
----------	-----------------	------------	------------------------

PACKAGING

Standard	Unit	Other
100	Contact us	Contact us

ELECTRICAL CHARACTERISTICS

Impedance		50	Ω
Frequency		0-8	GHz
VSWR	1.10	+	0,0500 x F(GHz) Maxi
Insertion loss		0.20	√F(GHz) dB Maxi
RF leakage	- (NA	- F(GHz) dB Maxi
Voltage rating		170	Veff Maxi
Dielectric withstanding voltage		500	Veff mini
Insulation resistance		5000	MΩ mini

ENVIRONMENTAL

Operating temperature	-55/+100	°C
Hermetic seal	NA	Atm.cm3/s
Panel leakage	NA	

MECHANICAL CHARACTERISTICS

Center contact retention			
Axial force – Mating End		NA	N mini
Axial force – Opposite end		NA	N mini
Torque		NA	N.cm mini
Recommended torque			
Mating		NA	N.cm
Panel nut		NA	N.cm
Mating life		500	Cycles mini
Weight		0,1000	g

SPECIFICATION

OTHER CHARACTERISTICS

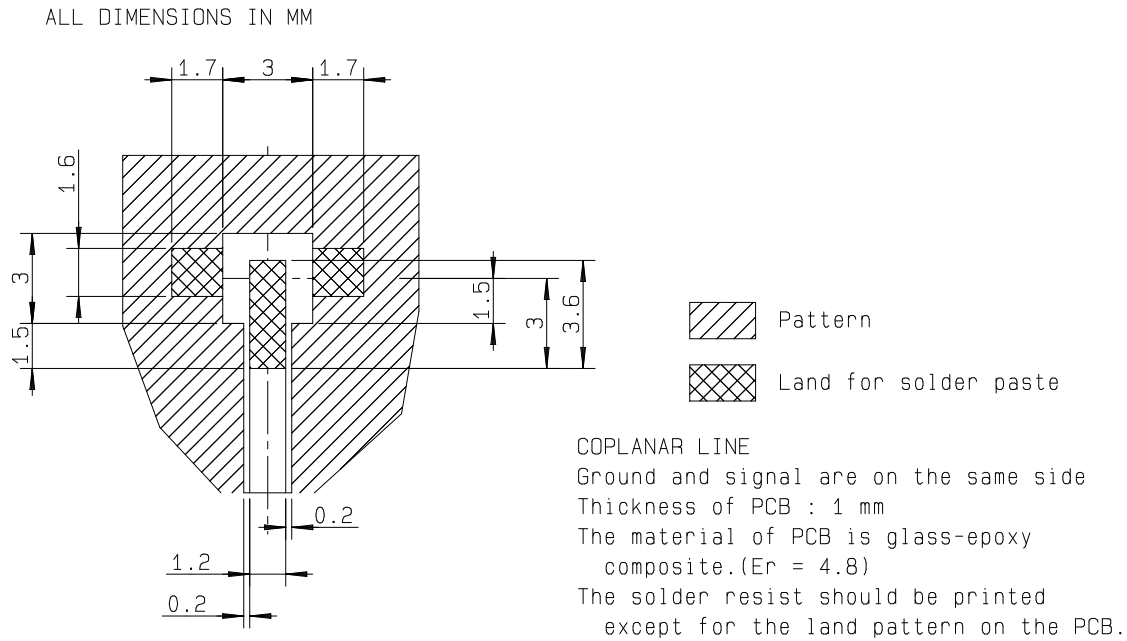
Assembly instruction:

Others:

accouplt : 18Nmax / desacc. : 7Nmin

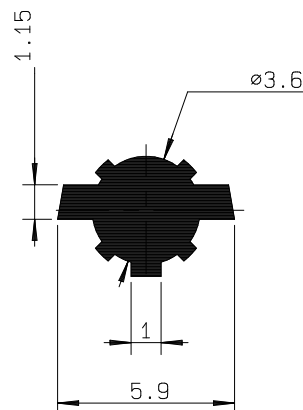
PAGE 3/4	ISSUE 10-11-15A	SERIES MMT	PART NUMBER R210408012
----------	-----------------	------------	------------------------

MMT SERIES - INFORMATION



ALL DIMENSIONS IN MM

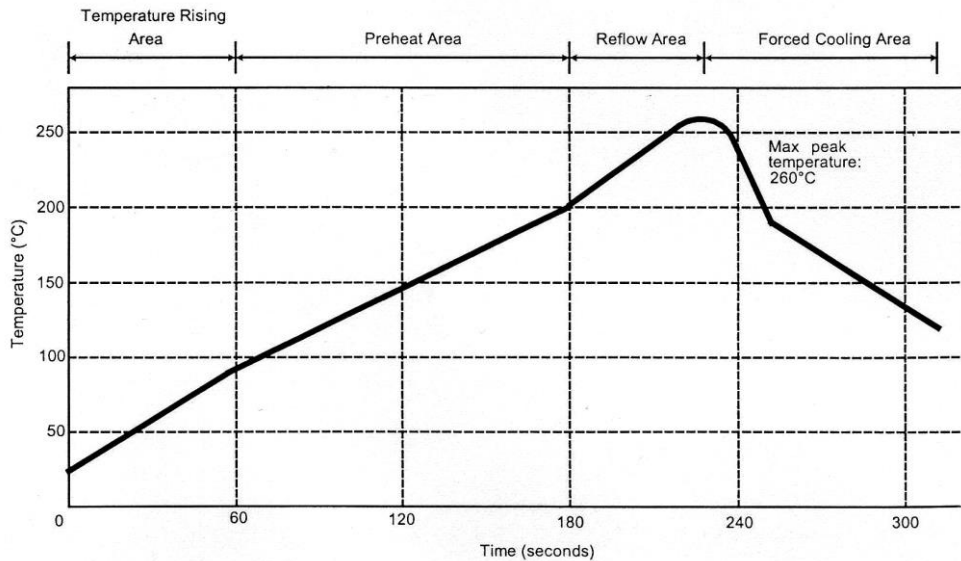
SHADOW OF MMT RECEPTACLE FOR VIDEO CAMERA



PAGE 4/4	ISSUE 10-11-15A	SERIES MMT	PART NUMBER R210408012
----------	-----------------	------------	------------------------

**SOLDER PROCEDURE OF MMT RECEPTACLE
IN INDUSTRIAL ENVIRONMENT**

- 1 – Deposition of solder paste Sn Ag4 Cu0.5 on mounting zone by screen printing application.
We recommend a Low Residue Solid Flux.
We advise a thickness of 200 microns (7.800 microinches). Verify that the edges of the printed zone are clean.
- 2 – Placement of the receptacle on the mounting zone with an automatic machine of « pick and place » type.
A video camera is recommended for positioning of the component. (see page 3)
Adhesive agents must not be used on the receptacle.
- 3 – Soldering by infra-red reflow.
Below, please find the typical profile to use.
- 4 – Cleaning of printed circuit boards
- 5 – Verification of solder joints and position of the component by visual inspection



Parameter	Value	Unit
Temperature rising Area	1 - 4	°C/sec
Max Peak Temperature	260	°C
Max dwell time @260°C	10	sec
Min dwell time @235°C	20	sec
Max dwell time @235°C	60	sec
Temperature drop in cooling Area	-1 to - 4	°C/sec
Max dwell time above 100°C	420	sec

X-ON Electronics

Largest Supplier of Electrical and Electronic Components

Click to view similar products for [RF Connectors / Coaxial Connectors](#) category:

Click to view products by [Radiall](#) manufacturer:

Other Similar products are found below :

[8915-1511-000](#) [89674-0827](#) [6001-7071-019](#) [6002-7051-003](#) [6002-7551-202](#) [6059674-1](#) [619550-1](#) [630059-000](#) [M39030/3-01N](#) [6500-7071-046](#) [6769](#) [CX050L2AQ](#) [7002-1541-010](#) [7002-1542-011](#) [7004-1512-000](#) [7009-1511-004](#) [7010-1511-000](#) [7029-1511-060](#) [7101-1541-010](#) [7101-1571-002](#) [7145-1521-002](#) [7203-1571-003](#) [7209-1511-011](#) [7210-1511-015](#) [7210-1511-019](#) [73137-5015](#) [73216-2241](#) [73404-2300](#) [7405-1521-005](#) [7405-1521-802](#) [8527](#) [8547](#) [FS11V](#) [877931](#) [8808-1511-001](#) [9049-9513-000](#) [9074-9513-000](#) [9101-9573-002](#) [910A205F](#) [9130-9573-002](#) [PL11SC-026](#) [PL375-33](#) [PL40-5](#) [PL74C-221](#) [PL75MC-217](#) [PL803-7](#) [980-8666-005](#) [1200690078](#) [1-201144-1](#) [R107003010W](#)