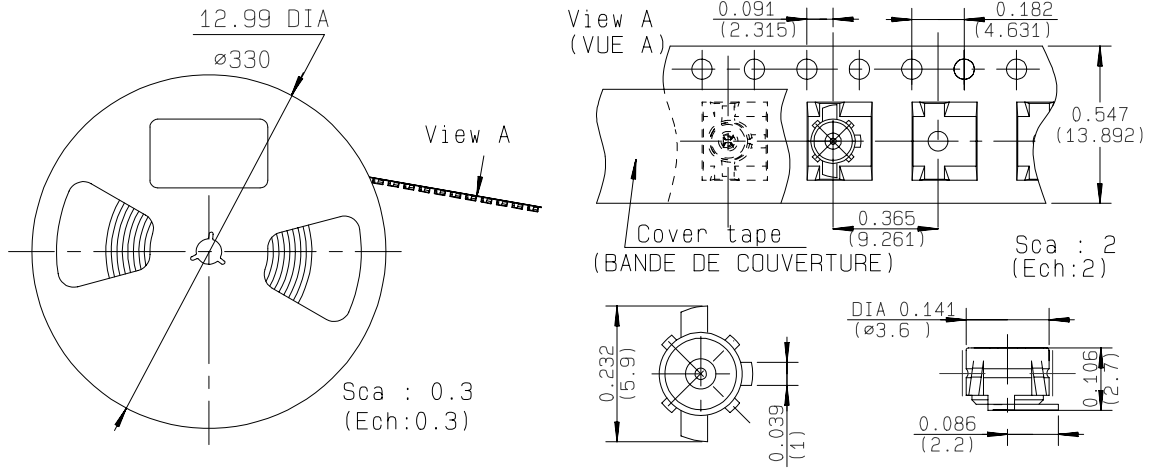


**STRAIGHT JACK RECEPTACLE FOR PCB**

**R210.408.012**

**SMT TYPE - GOLD 0.2 - REEL OF 100**

Series : MMT



All dimensions are in mm.



COMPONENTS	MATERIALS	PLATINGS (µm)
<b>BODY</b>	<b>PHOSPHOR BRONZE</b>	<b>GOLD 0.2 OVER NICKEL 2</b>
<b>CENTER CONTACT</b>	<b>BRASS</b>	<b>GOLD 0.2 OVER NICKEL 2</b>
<b>OUTER CONTACT</b>	<b>PHOSPHOR BRONZE</b>	<b>GOLD 0.2 OVER NICKEL 2</b>
<b>INSULATOR</b>	<b>PTFE</b>	
<b>GASKET</b>	-	-
<b>OTHERS PARTS</b>	-	-
-	-	-
-	-	-

Issue : 0325 A

In the effort to improve our products, we reserve the right to make changes judged to be necessary.



**STRAIGHT JACK RECEPTACLE FOR PCB**

**R210.408.012**

**SMT TYPE - GOLD 0.2 - REEL OF 100**

Series : MMT

**PACKAGING**

**SPECIFICATION**

Standard	Unit	Other
<b>100</b>	<b>'W' option</b>	<b>Contact us</b>

**ELECTRICAL CHARACTERISTICS**

**ENVIRONMENTAL**

Impedance		<b>50</b> Ω
Frequency		<b>0-8</b> GHz
VSWR	<b>1.10</b> +	<b>0.050</b> x F(GHz) Maxi
Insertion loss		<b>0.20</b> √F(GHz) dB Maxi
RF leakage	- (	<b>NA</b> - F(GHz)) dB Maxi
Voltage rating		<b>170</b> Veff Maxi
Dielectric withstanding voltage		<b>500</b> Veff mini
Insulation resistance		<b>5000</b> MΩ mini

Operating temperature	<b>-55/+100</b> ° C
Hermetic seal	<b>NA</b> Atm.cm3/s
Panel leakage	<b>NA</b>

**OTHERS CHARACTERISTICS**

Assembly instruction

Others :  
accouplt : 18Nmax / desacc. : 7Nmin

**MECHANICAL CHARACTERISTICS**

Center contact retention		
Axial force – Mating end	<b>NA</b>	N mini
Axial force – Opposite end	<b>NA</b>	N mini
Torque	<b>NA</b>	N.cm mini
Recommended torque		
Mating	<b>NA</b>	N.cm
Panel nut	<b>NA</b>	N.cm
Mating life	<b>500</b>	Cycles mini
Weight	<b>0.100</b>	g

Issue : 0325 A

In the effort to improve our products, we reserve the right to make changes judged to be necessary.



**STRAIGHT JACK RECEPTACLE FOR PCB**

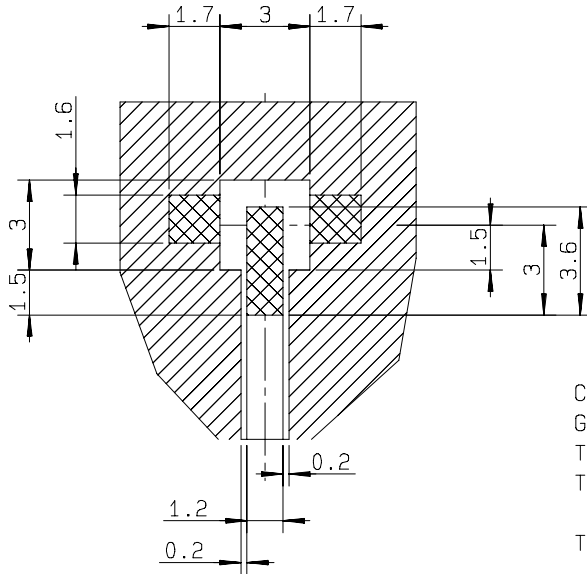
**R210.408.012**


**SMT TYPE - GOLD 0.2 - REEL OF 100**


Series : MMT

**MMT SERIES - INFORMATION**

ALL DIMENSIONS IN MM



 Pattern

 Land for solder paste

COPLANAR LINE

Ground and signal are on the same side

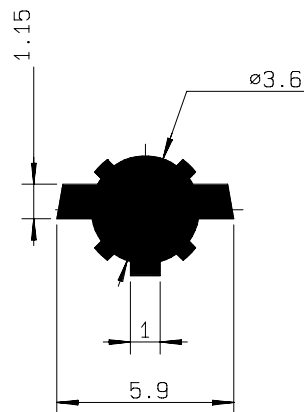
Thickness of PCB : 1 mm

The material of PCB is glass-epoxy composite. (Er = 4.8)

The solder resist should be printed except for the land pattern on the PCB.

ALL DIMENSIONS IN MM

**SHADOW OF MMT RECEPTACLE FOR VIDEO CAMERA**



Issue : 0325 A

In the effort to improve our products, we reserve the right to make changes judged to be necessary.



**STRAIGHT JACK RECEPTACLE FOR PCB**

**R210.408.012**

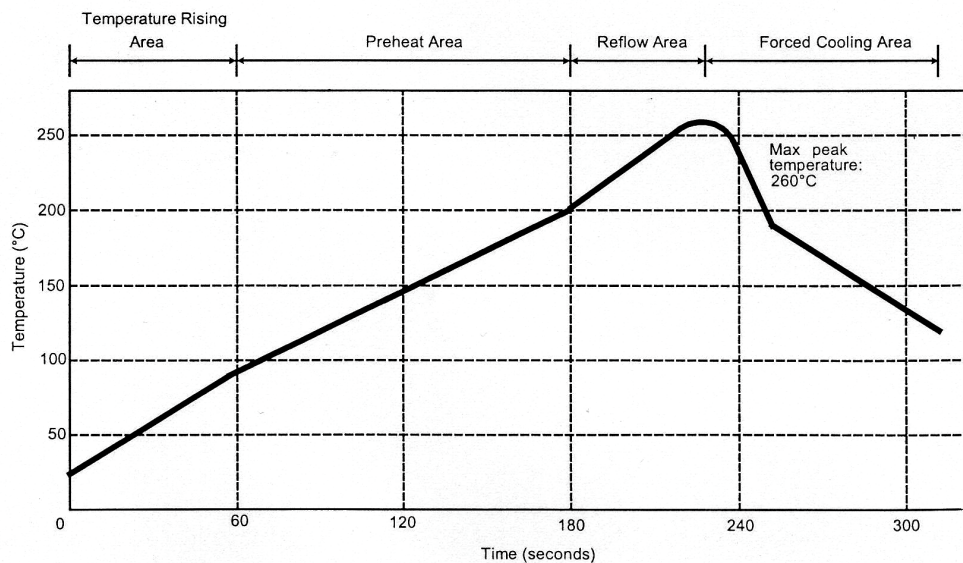
**SMT TYPE - GOLD 0.2 - REEL OF 100**

Series : MMT

**SOLDER PROCEDURE OF MMT RECEPTACLE  
IN INDUSTRIAL ENVIRONMENT**

- 1 – Deposition of solder paste Sn Ag4 Cu0.5 on mounting zone by screen printing application.  
We recommend a Low Residue Solid Flux.  
We advise a thickness of 200 microns (7.800 microinches). Verify that the edges of the prined zone are clean.
- 2 – Placement of the receptacle on the mounting zone with an automatic machine of « pick and place » type.  
A video camera is recommended for positioning of the component. (see page 3)  
Adhesive agents must not be used on the receptacle.
- 3 – Soldering by infra-red reflow.  
Below, please find the typical profile to use.
- 4 – Cleaning of printed circuit boards
- 5 – Verification of solder joints and position of the component by visual inspection

**Note : The MMT receptacle and the MMT plug must not be mated before completion of this procedure.**



Parmeter	Value	Unit
Temperature rising Area	1 - 4	°C/sec
Max Peak Temperature	260	°C
Max dwell time @260°C	10	sec
Min dwell time @235°C	20	sec
Max dwell time @235°C	60	sec
Temperature drop in cooling Area	-1 to - 4	°C/sec
Max dwell time above 100°C	420	sec

Issue : 0325 A

In the effort to improve our products, we reserve the right to make changes judged to be necessary.



## X-ON Electronics

Largest Supplier of Electrical and Electronic Components

*Click to view similar products for [RF Connectors / Coaxial Connectors](#) category:*

*Click to view products by [Radiall](#) manufacturer:*

Other Similar products are found below :

[8915-1511-000](#) [89674-0827](#) [6001-7071-019](#) [6002-7051-003](#) [6002-7551-202](#) [6059674-1](#) [619550-1](#) [630059-000](#) [M39030/3-01N](#) [6500-7071-046](#) [6769](#) [CX050L2AQ](#) [7002-1541-010](#) [7002-1542-011](#) [7004-1512-000](#) [7009-1511-004](#) [7010-1511-000](#) [7029-1511-060](#) [7101-1541-010](#) [7101-1571-002](#) [7145-1521-002](#) [7203-1571-003](#) [7209-1511-011](#) [7210-1511-015](#) [7210-1511-019](#) [73137-5015](#) [73216-2241](#) [73404-2300](#) [7405-1521-005](#) [7405-1521-802](#) [8527](#) [8547](#) [FS11V](#) [877931](#) [8808-1511-001](#) [9049-9513-000](#) [9074-9513-000](#) [9101-9573-002](#) [910A205F](#) [9130-9573-002](#) [PL11SC-026](#) [PL375-33](#) [PL40-5](#) [PL74C-221](#) [PL75MC-217](#) [PL803-7](#) [1200690078](#) [1-201144-1](#) [R107003010W](#) [R110A172100](#)