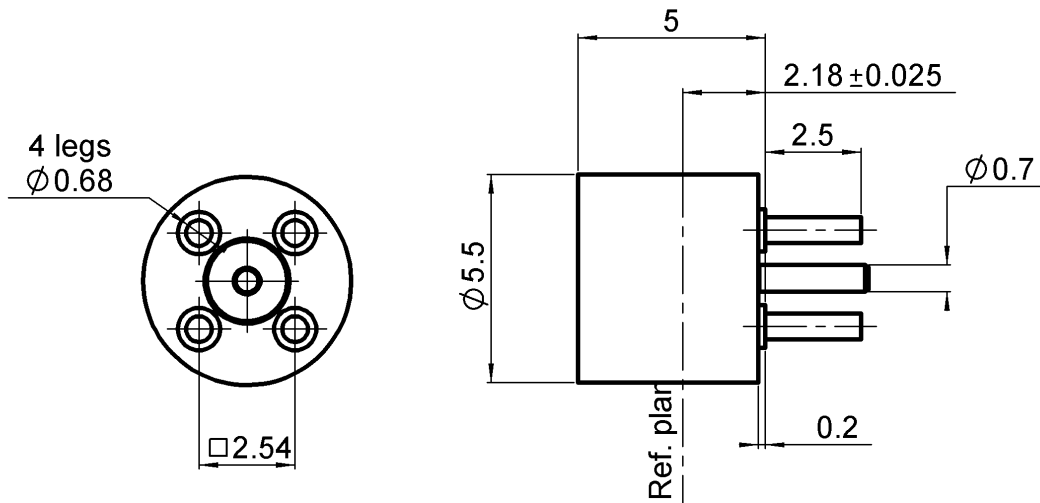
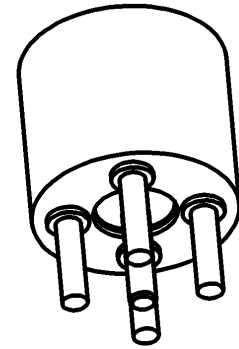
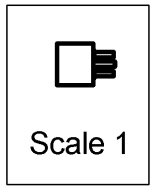


|          |                 |            |                        |
|----------|-----------------|------------|------------------------|
| PAGE 1/2 | ISSUE 10-03-17B | SERIES SMP | PART NUMBER R222426700 |
|----------|-----------------|------------|------------------------|

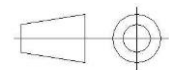


**PANEL CUT OUT**

|   | mm   |      |
|---|------|------|
|   | Maxi | mini |
| A | 0.86 | 0.79 |
| B | 0.98 | 0.94 |
| C | 2.59 | 2.49 |



All dimensions are in mm.



| COMPONENTS     | MATERIALS               | PLATING (µm)                      |
|----------------|-------------------------|-----------------------------------|
| Body           | <b>STAINLESS STEEL</b>  | <b>GOLD 0.5 OVER NICKEL 2</b>     |
| Center contact | <b>BERYLLIUM COPPER</b> | <b>GOLD 1.27 OVER NICKEL 1.27</b> |
| Outer contact  |                         |                                   |
| Insulator      | <b>PTFE</b>             |                                   |
| Gasket         |                         |                                   |
| Others parts   |                         |                                   |
| -              | -                       | -                                 |
| -              | -                       | -                                 |

|          |                 |            |                        |
|----------|-----------------|------------|------------------------|
| PAGE 2/2 | ISSUE 10-03-17B | SERIES SMP | PART NUMBER R222426700 |
|----------|-----------------|------------|------------------------|

### PACKAGING

| Standard | Unit       | Other      |
|----------|------------|------------|
| 100      | Contact us | Contact us |

### ELECTRICAL CHARACTERISTICS

|                                 |                 |               |                  |
|---------------------------------|-----------------|---------------|------------------|
| Impedance                       |                 | <b>50</b>     | Ω                |
| Frequency                       |                 | <b>0-40*</b>  | GHz              |
| VSWR***                         | <b>1.15**</b> + | <b>0,0000</b> | x F(GHz) Maxi    |
| Insertion loss                  |                 | <b>0.12*</b>  | √F(GHz) dB Maxi  |
| RF leakage                      | - (             | <b>NA</b>     | - F(GHz) dB Maxi |
| Voltage rating                  |                 | <b>335</b>    | Veff Maxi        |
| Dielectric withstanding voltage |                 | <b>500</b>    | Veff mini        |
| Insulation resistance           |                 | <b>5000</b>   | MΩ mini          |

### ENVIRONMENTAL

|                       |                 |           |
|-----------------------|-----------------|-----------|
| Operating temperature | <b>-65/+165</b> | °C        |
| Hermetic seal         | <b>NA</b>       | Atm.cm3/s |
| Panel leakage         | <b>NA</b>       |           |

### MECHANICAL CHARACTERISTICS

|                            |  |               |             |
|----------------------------|--|---------------|-------------|
| Center contact retention   |  |               |             |
| Axial force – Mating End   |  | <b>6.8</b>    | N mini      |
| Axial force – Opposite end |  | <b>NA</b>     | N mini      |
| Torque                     |  | <b>NA</b>     | N.cm mini   |
| Recommended torque         |  |               |             |
| Mating                     |  | <b>NA</b>     | N.cm        |
| Panel nut                  |  | <b>NA</b>     | N.cm        |
| Mating life                |  | <b>1000</b>   | Cycles mini |
| Weight                     |  | <b>0,7100</b> | g           |

### SPECIFICATION

### OTHER CHARACTERISTICS

Assembly instruction:

Others:

**Compliant with MIL-STD-348**

**\*Coaxial Transmission Line Only**

**\*\*DC-12 Ghz (Coaxial Transmission Line Only)**

**\*\*\*Performance strongly depends on layout and PCB material**

## X-ON Electronics

Largest Supplier of Electrical and Electronic Components

*Click to view similar products for [RF Connectors / Coaxial Connectors](#) category:*

*Click to view products by [Radiall](#) manufacturer:*

Other Similar products are found below :

[8915-1511-000](#) [89674-0827](#) [6001-7071-019](#) [6002-7051-003](#) [6002-7551-202](#) [6059674-1](#) [619550-1](#) [630059-000](#) [M39030/3-01N](#) [6500-7071-046](#) [6769](#) [CX050L2AQ](#) [7002-1541-010](#) [7002-1542-011](#) [7004-1512-000](#) [7009-1511-004](#) [7010-1511-000](#) [7029-1511-060](#) [7101-1541-010](#) [7101-1571-002](#) [7145-1521-002](#) [7203-1571-003](#) [7209-1511-011](#) [7210-1511-015](#) [7210-1511-019](#) [73137-5015](#) [73216-2241](#) [73404-2300](#) [7405-1521-005](#) [7405-1521-802](#) [8527](#) [8547](#) [FS11V](#) [877931](#) [9049-9513-000](#) [9074-9513-000](#) [9101-9573-002](#) [910A205F](#) [9130-9573-002](#) [PL11SC-026](#) [PL375-33](#) [PL40-5](#) [PL74C-221](#) [PL75MC-217](#) [PL803-7](#) [980-8666-005](#) [1200690078](#) [1-201144-1](#) [R107003010W](#) [R110A172100](#)