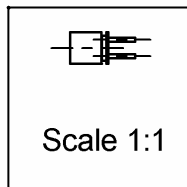
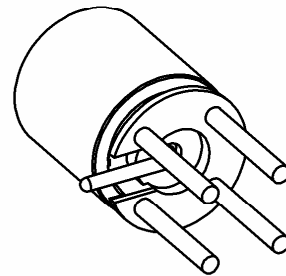
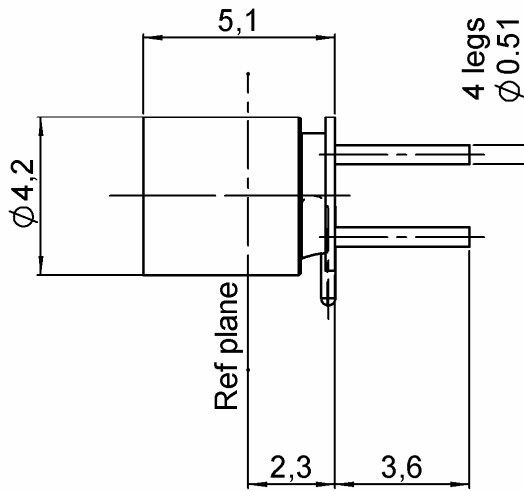
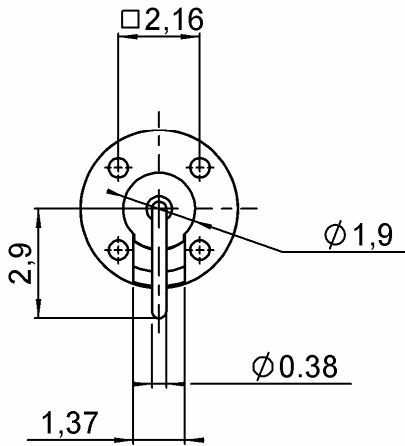


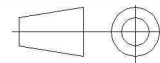
**MALE STRAIGHT RECEPTACLE FOR PCB**  
**PIN IN PASTE - LIMITED DETENT**

**R222.428.300**

Series : SMP



All dimensions are in mm.



| COMPONENTS     | MATERIALS               | PLATINGS (µm)                       |
|----------------|-------------------------|-------------------------------------|
| BODY           | STAINLESS STEEL + BRASS | PASSIVATED + GOLD 0.5 OVER NICKEL 2 |
| CENTER CONTACT | BERYLLIUM COPPER        | GOLD 1.27 OVER NICKEL 1.27          |
| OUTER CONTACT  | -                       | -                                   |
| INSULATOR      | PTFE                    | -                                   |
| GASKET         | -                       | -                                   |
| OTHERS PARTS   | -                       | -                                   |
| -              | -                       | -                                   |
| -              | -                       | -                                   |

Issue : 0914 C

In the effort to improve our products, we reserve the right to make changes judged to be necessary.



**MALE STRAIGHT RECEPTACLE FOR PCB**

**R222.428.300**

**PIN IN PASTE - LIMITED DETENT**

Series : SMP

**PACKAGING**

**SPECIFICATION**

| Standard   | Unit              | Other             |
|------------|-------------------|-------------------|
| <b>100</b> | <b>'W' option</b> | <b>Contact us</b> |

**ELECTRICAL CHARACTERISTICS**

**ENVIRONMENTAL**

|                                 |                              |                          |
|---------------------------------|------------------------------|--------------------------|
| Impedance                       | <b>50</b>                    | $\Omega$                 |
| Frequency                       | <b>0-18</b>                  | GHz                      |
| VSWR                            | <b>1.15*</b> + <b>0,0000</b> | x F(GHz) Maxi            |
| Insertion loss                  | <b>0.12</b>                  | $\sqrt{F}$ (GHz) dB Maxi |
| RF leakage                      | - ( <b>NA</b> )              | - F(GHz)) dB Maxi        |
| Voltage rating                  | <b>335</b>                   | Veff Maxi                |
| Dielectric withstanding voltage | <b>500</b>                   | Veff mini                |
| Insulation resistance           | <b>5000</b>                  | M $\Omega$ mini          |

|                       |                 |              |
|-----------------------|-----------------|--------------|
| Operating temperature | <b>-65/+165</b> | $^{\circ}$ C |
| Hermetic seal         | <b>NA</b>       | Atm.cm3/s    |
| Panel leakage         | <b>NA</b>       |              |

**OTHERS CHARACTERISTICS**

Assembly instruction

Others :  
Compliant with MIL-STD-348  
\*At 12.4GHz - performance strongly depends on lay out and pcb material

**MECHANICAL CHARACTERISTICS**

|                            |               |             |
|----------------------------|---------------|-------------|
| Center contact retention   |               |             |
| Axial force – Mating end   | <b>6.8</b>    | N mini      |
| Axial force – Opposite end | <b>6.8</b>    | N mini      |
| Torque                     |               | N.cm mini   |
| Recommended torque         |               |             |
| Mating                     | <b>NA</b>     | N.cm        |
| Panel nut                  | <b>NA</b>     | N.cm        |
| Mating life                | <b>500</b>    | Cycles mini |
| Weight                     | <b>0,3500</b> | g           |

Issue : 0914 C

In the effort to improve our products, we reserve the right to make changes judged to be necessary.



**MALE STRAIGHT RECEPTACLE FOR PCB**

**R222.428.300**

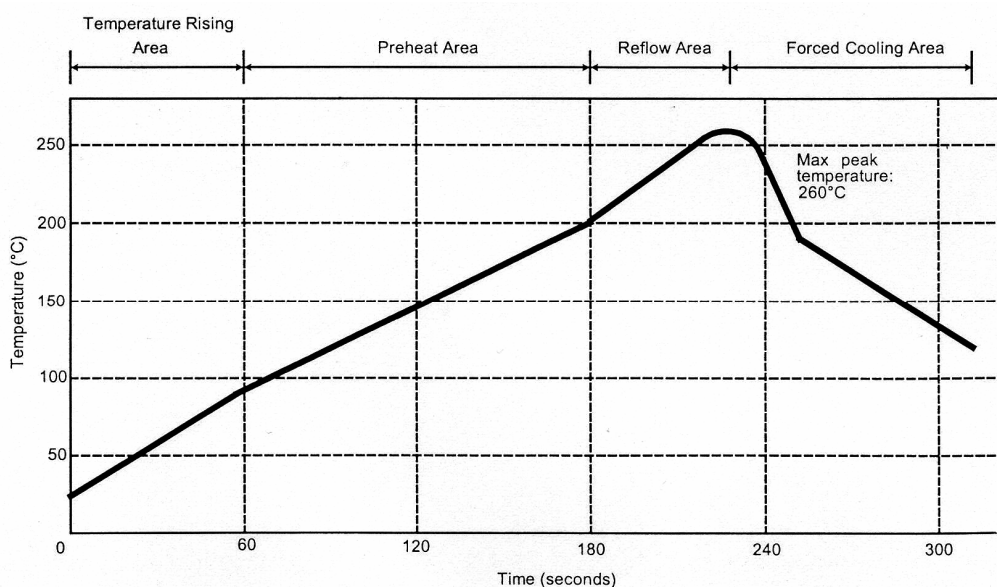
**PIN IN PASTE - LIMITED DETENT**

Series : SMP

**SOLDER PROCEDURE**

1. Deposition of solder paste 'Sn Ag4 Cu0.5' on mounting zone by screen printing application. We recommend a low residue flux.  
We advise a thickness of 150 microns ( 5.85 microinch ). Verify that the edges of the zone are clean.
2. Placement of the receptacle on the mounting zone with an automatic machine of 'pick and place' type.  
Video camera is recommended for the positioning of the component. Adhesive agents must not be used on the receptacle.
3. Soldering by infra-red reflow.  
Below, please find the typical profile to use.
4. Cleaning of printed circuit boards.
5. Checking of solder joints and position of the component by visual inspection.

**TEMPERATURE PROFILE**



| Parameter                        | Value     | Unit   |
|----------------------------------|-----------|--------|
| Temperature rising Area          | 1 - 4     | °C/sec |
| Max Peak Temperature             | 260       | °C     |
| Max dwell time @260°C            | 10        | sec    |
| Min dwell time @235°C            | 20        | sec    |
| Max dwell time @235°C            | 60        | sec    |
| Temperature drop in cooling Area | -1 to - 4 | °C/sec |
| Max dwell time above 100°C       | 420       | sec    |

Issue : 0914 C

In the effort to improve our products, we reserve the right to make changes judged to be necessary.



**MALE STRAIGHT RECEPTACLE FOR PCB**

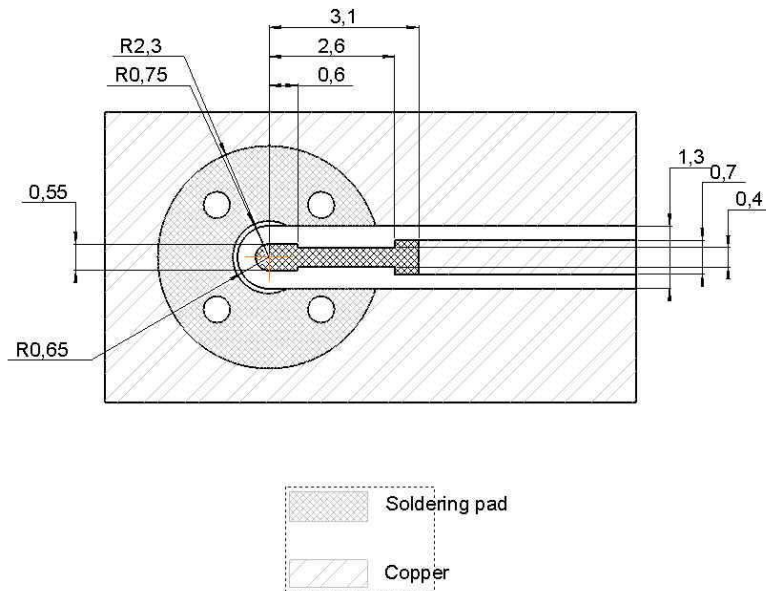
**R222.428.300**

**PIN IN PASTE - LIMITED DETENT**

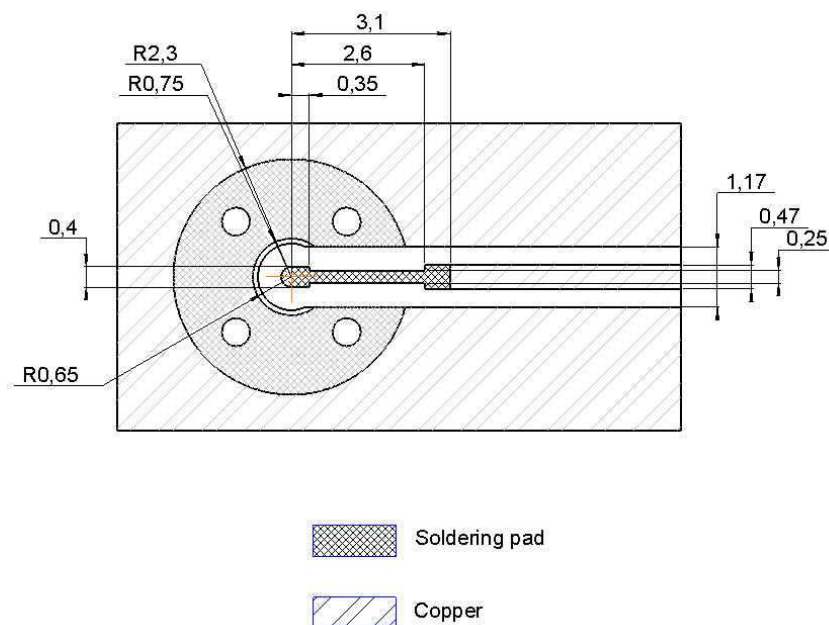
Series : SMP

**RECOMMENDED PAD DIMENSIONS:**

Substrate: RT5880 thickness 0.254mm, with copper layer 35µm on both sides :  
 Add vias between both sides along upper ground plane according to engineering practise



Substrate: RO4350 thickness 0.254mm, with copper layer 35µm on both sides :  
 Add vias between both sides along upper ground plane according to engineering practise



Issue : 0914 C

In the effort to improve our products, we reserve the right to make changes judged to be necessary.



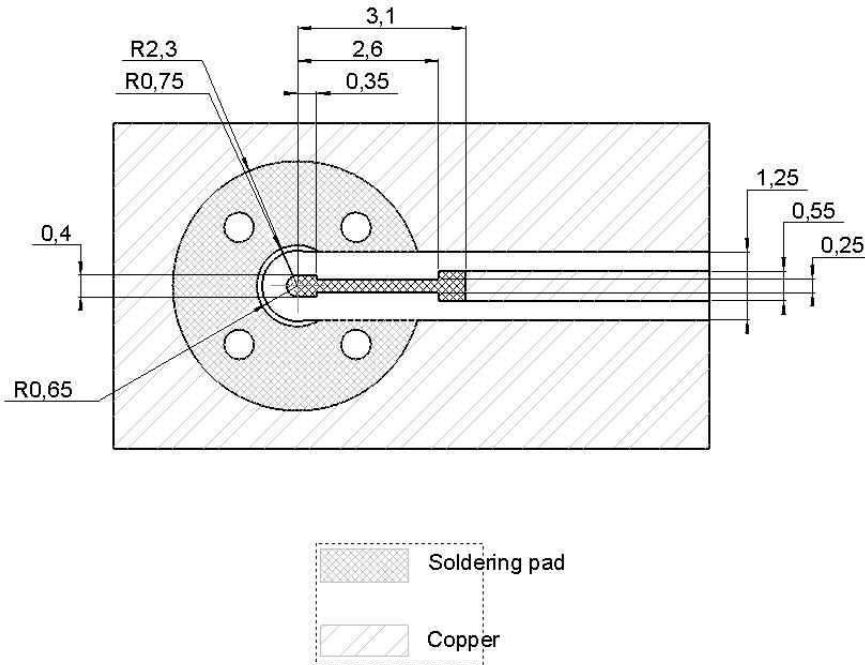
**MALE STRAIGHT RECEPTACLE FOR PCB**

**R222.428.300**

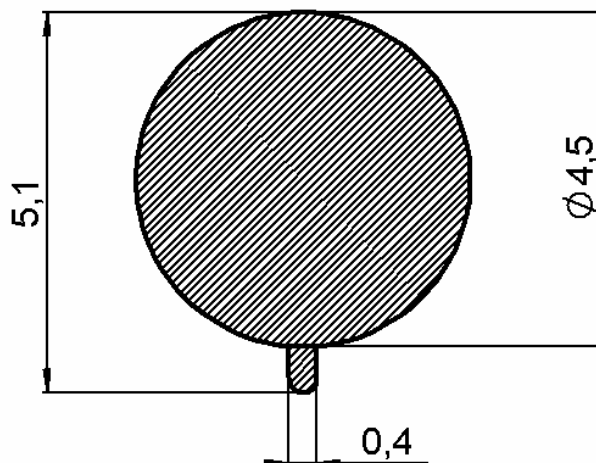
**PIN IN PASTE - LIMITED DETENT**

Series : SMP

Substrate: RO6002 thickness 0.254mm, with copper layer 35µm on both sides :  
 Add vias between both sides along upper ground plane according to engineering practise



**SHADOW FOR VIDEO CAMERA**



Issue : 0914 C

In the effort to improve our products, we reserve the right to make changes judged to be necessary.



## X-ON Electronics

Largest Supplier of Electrical and Electronic Components

*Click to view similar products for [RF Connectors / Coaxial Connectors](#) category:*

*Click to view products by [Radiall](#) manufacturer:*

Other Similar products are found below :

[8915-1511-000](#) [89674-0827](#) [6001-7071-019](#) [6002-7051-003](#) [6002-7551-202](#) [6059674-1](#) [619550-1](#) [630059-000](#) [M39030/3-01N](#) [6500-7071-046](#) [6769](#) [CX050L2AQ](#) [7002-1541-010](#) [7002-1542-011](#) [7004-1512-000](#) [7009-1511-004](#) [7010-1511-000](#) [7029-1511-060](#) [7101-1541-010](#) [7101-1571-002](#) [7145-1521-002](#) [7203-1571-003](#) [7209-1511-011](#) [7210-1511-015](#) [7210-1511-019](#) [73137-5015](#) [73216-2241](#) [73404-2300](#) [7405-1521-005](#) [7405-1521-802](#) [8527](#) [8547](#) [FS11V](#) [877931](#) [8808-1511-001](#) [9074-9513-000](#) [9101-9573-002](#) [910A205F](#) [9130-9573-002](#) [PL11SC-026](#) [PL375-33](#) [PL40-5](#) [PL74C-221](#) [PL75MC-217](#) [PL803-7](#) [1200690078](#) [1-201144-1](#) [R107003010W](#) [R110A172100](#) [R112186000](#)