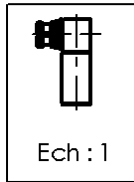
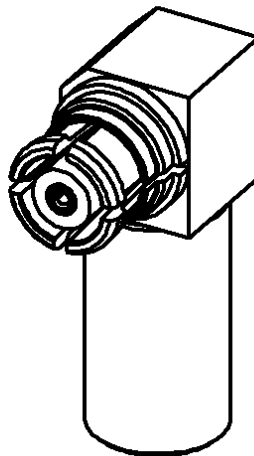
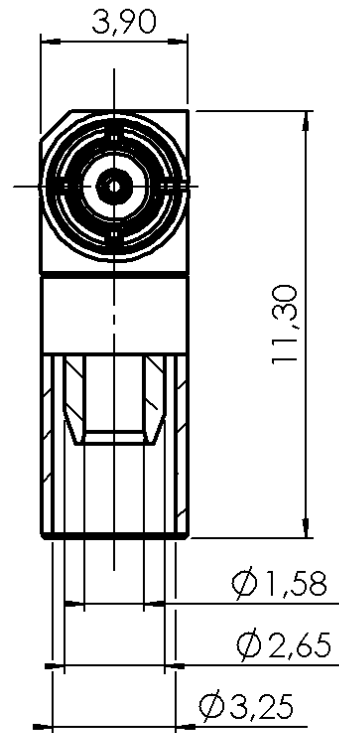
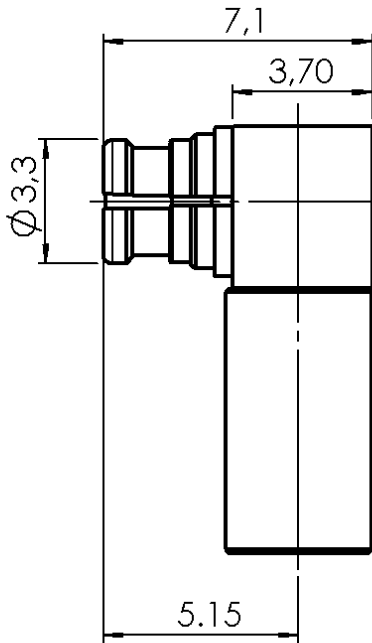


RIGHT ANGLE PLUG CRIMP TYPE

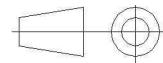
R222.900.320

CABLE 2.6/50 S

Series : SMP-COM



All dimensions are in mm.



COMPONENTS	MATERIALS	PLATING (µm)
BODY	BRASS	NPGR
CENTER CONTACT	BERYLLIUM COPPER	NPGR
OUTER CONTACT	BERYLLIUM COPPER	NPGR
INSULATOR	PTFE	
GASKET	-	
OTHERS PARTS	BRASS	GOLD 0.2 OVER NICKEL 2
-	-	-
-	-	-

Issue : 0934 A

In the effort to improve our products, we reserve the right to make changes judged to be necessary.



RIGHT ANGLE PLUG CRIMP TYPE

R222.900.320

CABLE 2.6/50 S

Series : **SMP-COM**

PACKAGING

SPECIFICATION

Standard	Unit	Other
100	'W' option	Contact us

ELECTRICAL CHARACTERISTICS

ENVIRONMENTAL

Impedance **50** Ω
 Frequency **0-12.4*** GHz
 VSWR **1.25**** + **0,0000** x F(GHz) Maxi
 Insertion loss **0.12** √F(GHz) dB Maxi
 RF leakage - (**55***** - F(GHz)) dB Maxi
 Voltage rating **250** Veff Maxi
 Dielectric withstanding voltage **750** Veff mini
 Insulation resistance **5000** MΩ mini

Operating temperature **-55/+125** ° C
 Hermetic seal **Atm.cm3/s**
 Panel leakage

OTHER CHARACTERISTICS

Assembly instruction **Crimp 05**

Others :
 *ROS 1.7 at 12.4GHz
 **ROS at 6GHz
 ***RF Leakage : -40dB min 3<F<6GHz

MECHANICAL CHARACTERISTICS

Center contact retention
 Axial force – Mating end **6.8** N mini
 Axial force – Opposite end **6.8** N mini
 Torque **NA** N.cm mini

Recommended torque
 Mating **N.cm**
 Panel nut **N.cm**

Mating life **100** Cycles mini
 Weight **0,8432** g

Issue : 0934 A

In the effort to improve our products, we reserve the right to make changes judged to be necessary.



X-ON Electronics

Largest Supplier of Electrical and Electronic Components

Click to view similar products for [RF Connectors / Coaxial Connectors](#) category:

Click to view products by [Radiall](#) manufacturer:

Other Similar products are found below :

[8915-1511-000](#) [89674-0827](#) [6001-7071-019](#) [6002-7051-003](#) [6002-7551-202](#) [6059674-1](#) [619550-1](#) [630059-000](#) [M39030/3-01N](#) [6500-7071-046](#) [6769](#) [CX050L2AQ](#) [7002-1541-010](#) [7002-1542-011](#) [7004-1512-000](#) [7009-1511-004](#) [7010-1511-000](#) [7029-1511-060](#) [7101-1541-010](#) [7101-1571-002](#) [7145-1521-002](#) [7203-1571-003](#) [7209-1511-011](#) [7210-1511-015](#) [7210-1511-019](#) [73137-5015](#) [73216-2241](#) [73404-2300](#) [7405-1521-005](#) [7405-1521-802](#) [8527](#) [8547](#) [FS11V](#) [877931](#) [8808-1511-001](#) [9049-9513-000](#) [9074-9513-000](#) [9101-9573-002](#) [910A205F](#) [9130-9573-002](#) [PL11SC-026](#) [PL375-33](#) [PL40-5](#) [PL74C-221](#) [PL75MC-217](#) [PL803-7](#) [1200690078](#) [1-201144-1](#) [R107003010W](#) [R110A172100](#)