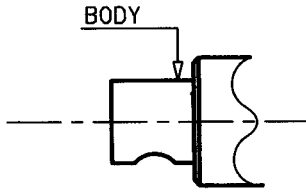


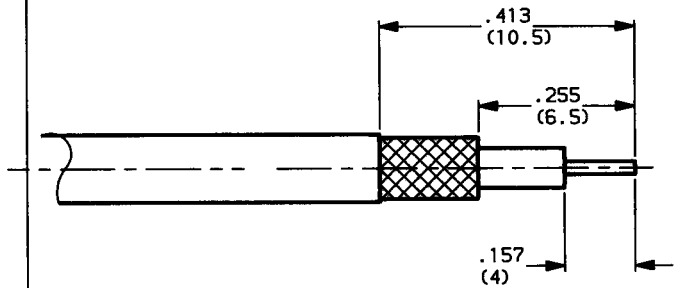


Panel cable receptacle, solder-type
- cable 2/50

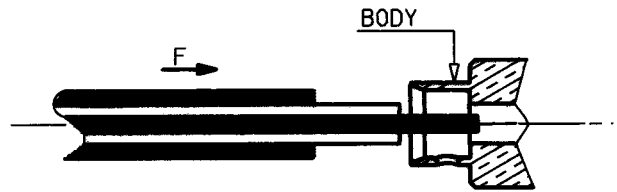
R. I. K. J. M. H.



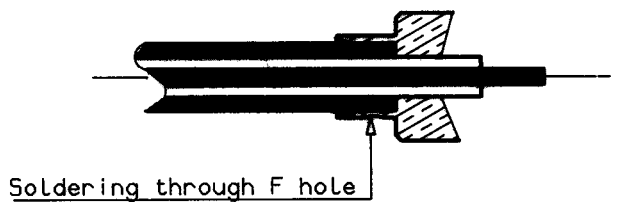
1-1 Cable stripping



2-1 To introduce cable into the connector body until contact with it according to F direction



3-1 To solder the braid on the body through F hole



Soldering through F hole

ISSUE	REVISION No	DESCRIPTION	BY	DATE
.
.
.
.

Initiated on 29 08 88

Superseded on _____

The information given here is subject to change without notice. Design changes may be in order to improve the product.



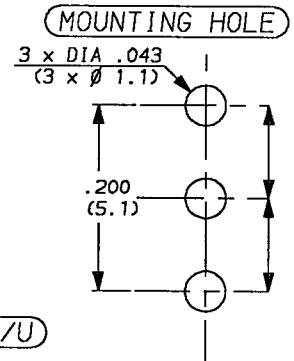
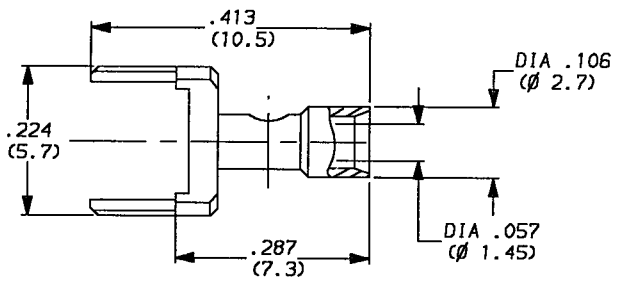
FEEDTHROUGH FOR P.C.B SOLDER TYPE
CABLE 2/50

SERIES:

MCX

01/02

R-INC 87413 H



(---) DIMENSIONS IN MM

WEIGHT 0 oz (..... g)

Cable : RG 178/U , RG 196/U

CHARACTERISTICS

NOMINAL IMPEDANCE	50 Ω	STANDARDISATION	-
FREQUENCY RANGE	0-3 GHz		-
TEMPERATURE RATING	-55 Ω +155 $^{\circ}$ C		-
VSWR	NA Max		-
RF INSERTION LOSS	NA dB Max	CABLE RETENTION	7.2 Lb Max 32 N Max
VOLTAGE RATING	750 Vrms	CENTER CONTACT RETENTION	
DIELECTRIC WITHSTANDING VOLTAGE	2000 Vrms	Axial force - mating end	0 Lb Max NA N Max
INSULATION RESISTANCE	NA M Ω	Axial force - opposite end	0 Lb Max NA N Max
HERMETIC SEAL	NA cc/s cm ³ /s	Torque (Max)	0 inch.oz NA cm.N
LEAKAGE (pressurized only)	0 psi NA kg/cm ²	MATING TORQUE RECOMMENDED	0 inch.Lb NA cm.N
-	-		-
-	-		-

CONSTRUCTION

CONNECTOR PARTS	MATERIALS	FINISH
Body	Brass	Gold over nickel
Outer contact	-	-
Center contact	-	-
Insulators	-	-
-	-	-
-	-	-
-	-	-
-	-	-
-	-	-

ISSUE	REVISION No	DESCRIPTION	BY	DATE
.
.
.
.

Initiated on 03 11 88
Superseded on -----

The information given here is subject to change without notice. Design changes may be in order to improve the product.



X-ON Electronics

Largest Supplier of Electrical and Electronic Components

Click to view similar products for [RF Connectors / Coaxial Connectors](#) category:

Click to view products by [Radiall](#) manufacturer:

Other Similar products are found below :

[8915-1511-000](#) [89674-0827](#) [6001-7071-019](#) [6002-7051-003](#) [6002-7551-202](#) [6059674-1](#) [619550-1](#) [630059-000](#) [M39030/3-01N](#) [6500-7071-046](#) [6769](#) [CX050L2AQ](#) [7002-1541-010](#) [7002-1542-011](#) [7004-1512-000](#) [7009-1511-004](#) [7010-1511-000](#) [7029-1511-060](#) [7101-1541-010](#) [7101-1571-002](#) [7145-1521-002](#) [7203-1571-003](#) [7209-1511-011](#) [7210-1511-015](#) [7210-1511-019](#) [73137-5015](#) [73216-2241](#) [73404-2300](#) [7405-1521-005](#) [7405-1521-802](#) [8527](#) [8547](#) [FS11V](#) [877931](#) [8808-1511-001](#) [9049-9513-000](#) [9074-9513-000](#) [9101-9573-002](#) [910A205F](#) [9130-9573-002](#) [PL11SC-026](#) [PL375-33](#) [PL40-5](#) [PL74C-221](#) [PL75MC-217](#) [PL803-7](#) [980-8666-005](#) [1200690078](#) [1-201144-1](#) [R107003010W](#)