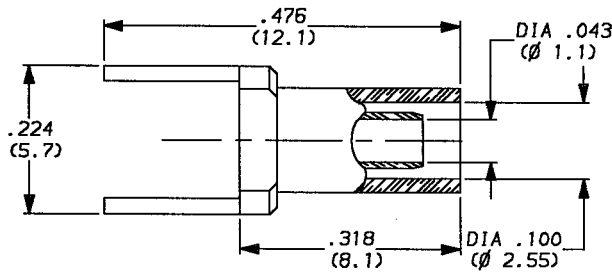
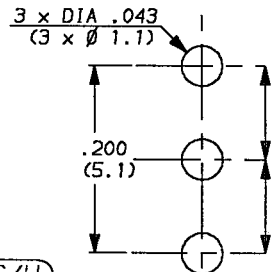


FEEDTHROUGH FOR P.C.B CRIMPING TYPE
CABLE 2/50



MOUNTING HOLE



(---) DIMENSIONS IN MM

WEIGHT 0 oz (..... g)

Cable : RG 178/U , RG 196/U

CHARACTERISTICS

NOMINAL IMPEDANCE	50 Ω	STANDARDISATION	-
FREQUENCY RANGE	0-3 GHz		-
TEMPERATURE RATING	-55 α +155 $^{\circ}$ C		-
VSWR	NA Max		-
RF INSERTION LOSS	NA dB Max	CABLE RETENTION	7.2 Lb Max 32 N Max
VOLTAGE RATING	750 Vrms	CENTER CONTACT RETENTION	
DIELECTRIC WITHSTANDING VOLTAGE	2000 Vrms	Axial force - mating end	0 Lb Max NA N Max
INSULATION RESISTANCE	NA M Ω	Axial force - opposite end	0 Lb Max NA N Max
HERMETIC SEAL	NA cc/s cm ³ /s	Torque (Max)	0 inch.oz NA cm.N
LEAKAGE (pressurized only)	0 psi NA kg/cm ²	MATING TORQUE RECOMMENDED	0 inch.Lb NA cm.N
-	-	-	-
-	-	-	-

CONSTRUCTION

CONNECTOR PARTS	MATERIALS	FINISH
Body	Brass	Gold over nickel
Outer contact	-	-
Center contact	-	-
Insulators	-	-
Ferrule	Brass	Gold over nickel
-	-	-
-	-	-
-	-	-
-	-	-

ISSUE	REVISION No	DESCRIPTION	BY	DATE
.
.
.
.

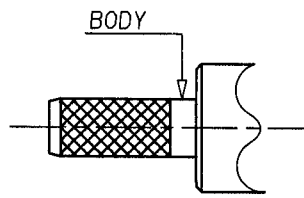
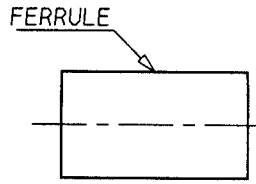
Initiated on 03 11 88

The information given here is subject to change without notice. Design changes may be in order to improve the product.

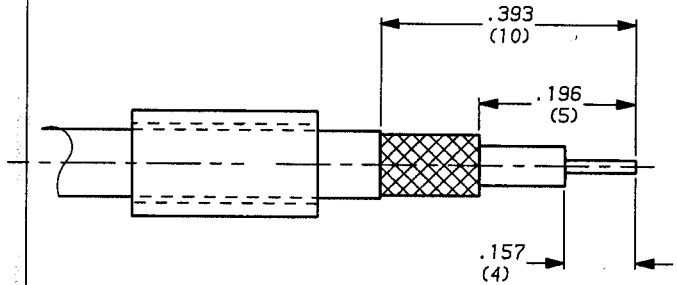


Superseded on ---

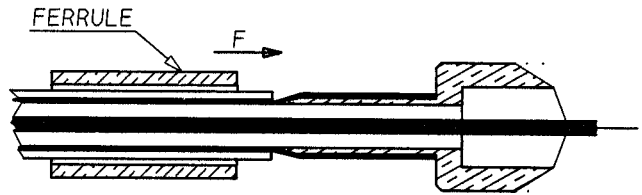
Panel cable receptacle, crimp-type
- cable 2/50



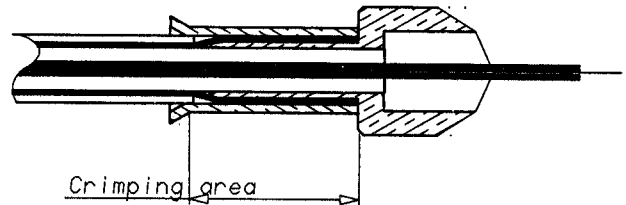
- 1-1 To slide ferrule on the cable
- 1-2 Cable stripping



- 2-1 To open the braid
- 2-2 To slide body under braid
- 2-3 To slide the ferrule on braid according to F direction



- 3-3 To crimp the ferrule
- crimping tool R 282 271
Hex : .127 (3.25)



ISSUE	REVISION No	DESCRIPTION	BY	DATE
.
.
.
.

Initiated on 29 08 88

Superseded on -----

The information given here is subject to change without notice. Design changes may be in order to improve the product.



GMBH A. INC.

X-ON Electronics

Largest Supplier of Electrical and Electronic Components

Click to view similar products for [Heat Shrink Cable Boots & End Caps](#) category:

Click to view products by [Radiall](#) manufacturer:

Other Similar products are found below :

[577159N001](#) [645494-000](#) [CX4132-000](#) [687025-000](#) [705331-000](#) [718446-000](#) [725666N001](#) [729257-000](#) [F27131-000](#) [F85868-000](#) [770-003S106W2](#) [770-013210W1](#) [770-013311](#) [770-013312](#) [806542N001](#) [807507-000](#) [808059-000](#) [808362-000](#) [808618-000](#) [809125-000](#) [809130-000](#) [809218-000](#) [812014-000](#) [812047-000](#) [813166-000](#) [813767N002](#) [814741-000](#) [819117N001](#) [823026-000](#) [823070-000](#) [825002-000](#) [841189N001](#) [861471-000](#) [866647-000](#) [879515-000](#) [937577-000](#) [957073-000](#) [982033-2](#) [A77813-000](#) [R280576000](#) [D96192-000](#) [163549-000](#) [MTPSRBCL-C](#) [1954015-1](#) [200W531-3-0](#) [202A163-4-0-CS5067](#) [202A343-3-00-0](#) [202B221-13-0](#) [202B231-13-0](#) [202B563-25-07-0](#)