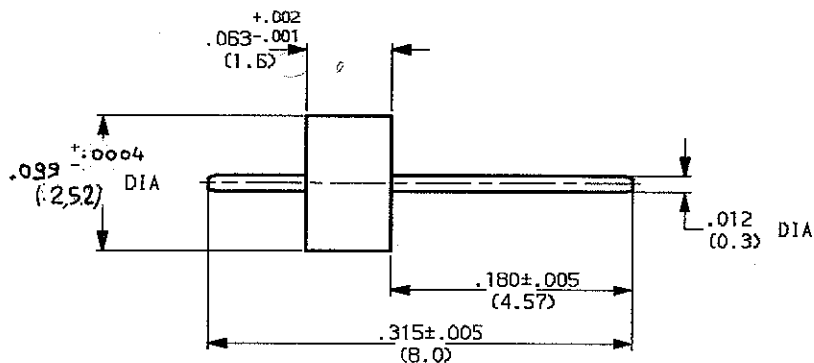


GLASS SEAL PIN .012(0.30) DIA

SERIES: ACC

1 / 3



MOUNTING HOLE

See page 2 and 3.

WEIGHT 0.007 oz (0.2g)

CABLES : -

CHARACTERISTICS

| | |
|---------------------------------|--|
| NOMINAL IMPEDANCE | 50 Ω |
| FREQUENCY RANGE | 0-18 GHz |
| TEMPERATURE RATING | -65/+200 °C |
| VSWR | 1.02 + 0.003 * F (GHz) Max (Applicable for mounting B (see page 3)) |
| RF INSERTION LOSS | NA /F dB Maxi |
| VOLTAGE RATING | 335 Vrms Maxi |
| DIELECTRIC WITHSTANDING VOLTAGE | 1000 Vrms mini |
| INSULATION RESISTANCE | NA Mo mini |
| HERMETIC SEAL | 10-8 cc/s Atm.cm3/s |
| LEAKAGE (pressurized only) | NA psi MPa |

STANDARDISATION

| | |
|----------------------------|---------------------|
| CABLE RETENTION | NA lb mini N |
| CENTER CONTACT RETENTION | |
| Axial force - mating end | 4.5 lb mini 20 N |
| Axial force - opposite end | 4.5 lb mini 20 N |
| Torque (Min) | NA Inch.oz cm.N |
| RECOMMENDED TORQUES | |
| Mating | NA Inch.Lb cm.N |
| Panel nut | NA Inch.Lb cm.N |
| Clamp nut | NA Inch.Lb cm.N |

CONSTRUCTION

| CONNECTOR PARTS | MATERIALS | FINISH |
|-----------------|---------------|------------------|
| BODY | - | - |
| OUTER CONTACT | FERRO-NICKEL | GOLD OVER NICKEL |
| CENTER CONTACT | FERRO-NICKEL | GOLD OVER NICKEL |
| INSULATORS | MATCHED GLASS | - |
| - | - | - |
| - | - | - |
| - | - | - |
| - | - | - |

| ISSUE | REVISION No | DESCRIPTION | BY | DATE |
|-------|-------------|---|-----------|----------|
| 9731 | 97.05.013 | $\varnothing 2.51 \rightarrow \varnothing 2.52$ | (VICIARD) | 28.07.97 |

Initiated on 06.NOV.97

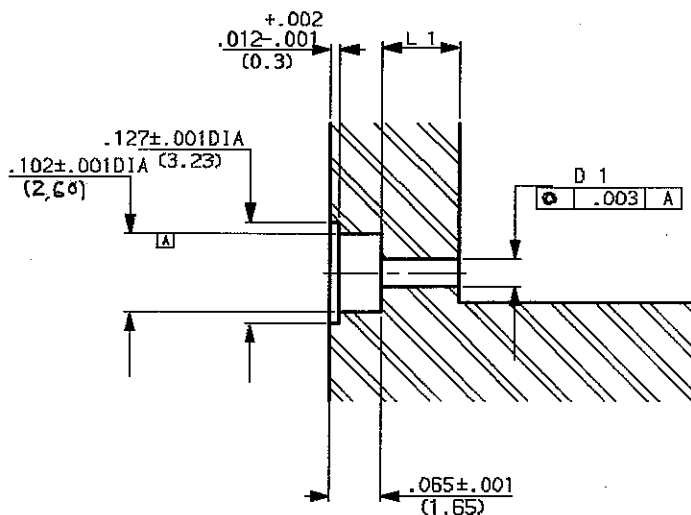
The information given here is subject to change without notice. Design changes may be in order to improve the product.



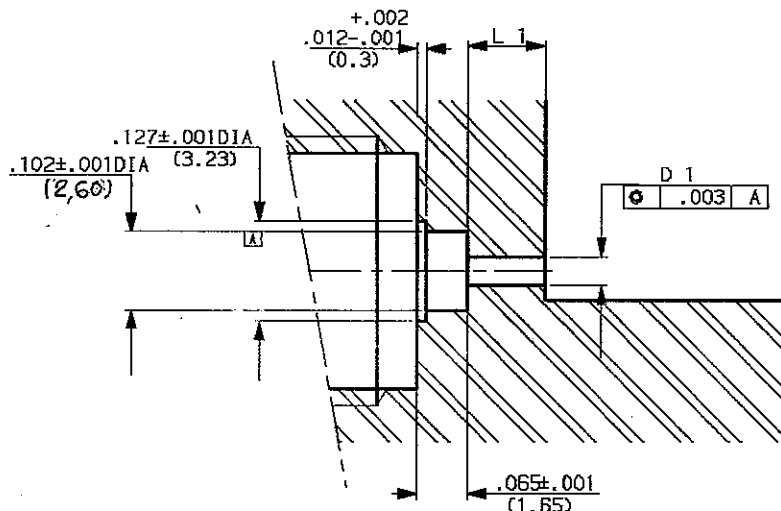
Superseded on

RECOMMENDED MOUNTING HOLE DETAIL

FLANGE RECEPTACLE



RECEPTACLE SCREW



D1 and L1 dimensions have to be determined according to each application.

We advise of two following case: (see page 3)

- using of the R280 469 removable socket :

$D1 = .079 + \text{or} - .0008$

$L1 = .1 + \text{or} - .004$

- the bead pin is directly welded on the track :

$D1 = .0276 + \text{or} - .0008$

$L1 = \text{from } .040 \text{ to } .157 \text{ according to customer's design criteria.}$

| ISSUE | REVISION No | DESCRIPTION | BY | DATE |
|-------|-------------|---------------------|---------|----------|
| 9731 | 97.05.013 | Dia 2,59 → DIA 2,60 | TRIPIER | 28.07.97 |

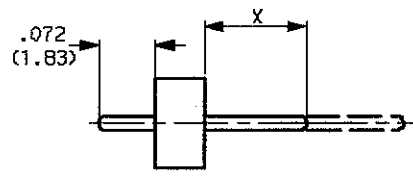
Initiated on 06-Nov-97

Superseded on _____

The information given here is subject to change without notice. Design changes may be in order to improve the product.

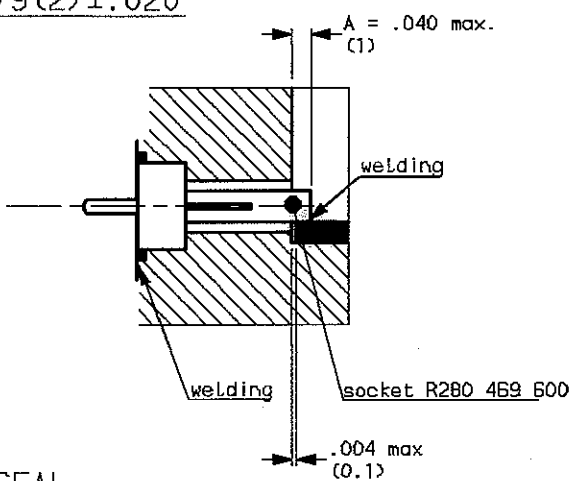


ASSEMBLY INSTRUCTIONS



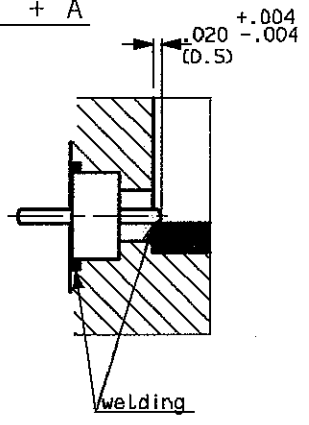
MOUNTING A : WITH REMOVABLE CONTACT

$X = .079(2) \pm .020$



MOUNTING B : WITH SEAL ONLY

$X = L1 + A$



GLASS SEAL

- 1 - Adjust X by cutting the pin if necessary.
- 2 - Introduce the glass bead into its housing as here above (with the mounted socket)
- 3 - Weld the ring by putting a welding wire in the groove.
- 4 - Weld the pin (or socket) on the track. Beware of putting too much welding!

IMPORTANT: for maximum RF characteristics the Link track/pin must be as thin as possible. We advise you to respect rigorously the A dimension, by welding accurately the bead pin directly on the track (right drawing).

CONNECTOR

- FLANGE RECEPTACLE: Set up the EMI gasket in the connector groove. Put the connector on the housing while introducing the bead pin into socket, then mount the fixtures of the flange.
- SCREW RECEPTACLE: Screw the connector into the housing. (Tooling and torque, see the following board)

| | TOOLING | TORQUE |
|------------------------------|--|----------------|
| <input type="checkbox"/> SMA | Jack receptacle R282.341.010 Plug receptacle R282.342 | 17 inch-pounds |
| <input type="checkbox"/> BMA | Jack receptacle R282.322 Plug receptacle R282.340 | 25 inch-pounds |

| ISSUE | REVISION No | DESCRIPTION | BY | DATE |
|-------|-------------|-------------|----|------|
| . | . | . | . | . |
| . | . | . | . | . |
| . | . | . | . | . |

Initiated on 06. NOV. 91
Superseded on -----

The information given here is subject to change without notice. Design changes may be in order to improve the product.



X-ON Electronics

Largest Supplier of Electrical and Electronic Components

Click to view similar products for [RF Connector Accessories](#) category:

Click to view products by [Radiall](#) manufacturer:

Other Similar products are found below :

[89674-0712](#) [F702RX24](#) [FERRULE-174](#) [R141802000](#) [R141805000](#) [R141842000](#) [R161862000](#) [R161862000W](#) [R280752000](#) [R280907000](#)
[R694261906](#) [RFI21-13](#) [RFI75-13-D2](#) [RFI75-4-D2](#) [AX102906](#) [AX102907](#) [18097-0013](#) [HP-375](#) [HP-500](#) [2098-0294-00](#) [2098-3251-94](#) [KA-](#)
[81-05](#) [89674-0805](#) [F1](#) [FERRULE-223](#) [202102-11](#) [213337-1](#) [220222-2](#) [24092671A](#) [24092678A](#) [R280468000](#) [R280510000](#) [R282862060](#)
[RFI155-1](#) [RFI25-12-D3](#) [RFI25-5](#) [RFI25-5-D3](#) [RFI75-12-D2](#) [RFI75-2-D2](#) [RFI75-4-D3](#) [RFI77-6](#) [360HS001M2508M6](#) [4-1532137-4](#) [5-21085-](#)
[0](#) [105274-1000](#) [111062-0490](#) [112122-SOD-LUG](#) [112-NUT-KNURL](#) [IPP-2014](#) [R280490020](#)