

**DT-F / REVERSE POLARITY  
(RP-MCX / RP-SMA / RP-BNC / RP-TNC) / UHF series**

R139 / R300 / R155

**RADIAL**   
The next connexion



	Pages
<b>DT-F</b>	
Interface .....	16-4
Characteristics .....	16-4
Plugs .....	16-5 and 16-6
Jack .....	16-5
Receptacles .....	16-5 and 16-6
Adapter .....	16-6
Panel drilling .....	16-6
<b>REVERSE POLARITY</b>	
Introduction .....	16-7
Finder guide .....	16-7
<b>RP-MCX</b>	
Interface .....	16-8
Plug .....	16-8
Receptacle .....	16-8
<b>RP-SMA</b>	
Interface .....	16-9
Plugs .....	16-9
Jacks .....	16-10
Receptacle .....	16-10
<b>RP-BNC</b>	
Interface .....	16-11
Plug .....	16-11
Receptacle .....	16-11
<b>RP-TNC</b>	
Interface .....	16-12
Plugs .....	16-12
Jack .....	16-12
Panel drilling .....	16-13
<b>UHF</b>	
Interface .....	16-14
Characteristics .....	16-14
Plugs .....	16-15
Receptacles .....	16-15
Adapter .....	16-16
Panel drilling .....	16-16

## INTERFACE

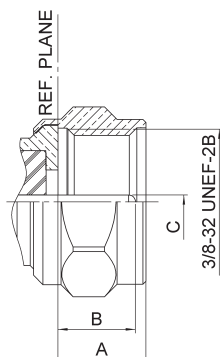
The DT-F (Digital Transmission F) is a new screw-on 75Ω coaxial connector series compatible with the existing F-type connectors which comply with the IEC 169-24 standard.

Designed according to this standard, DT-F series offers high reliability and enhanced performance up to 3 GHz, for digital applications like CATV, Internet, satellite, instrumentation and test equipment.

Most of DT-F connectors feature a **single piece design**, with its integrated center contact and crimp ferrule for **easy and low cost installation**.

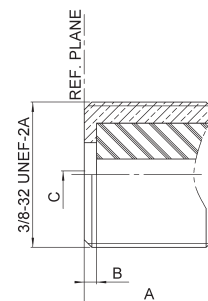
### PLUG

male contact



### JACK

female contact



Letter	mm		inch	
	min.	max.	min.	max.
A	8.4		.331	
B		0.9		.035
C DIA	Accepts pin diameter 0.8 to 1.2		Accepts pin diameter .031 to .047	

Letter	mm		inch	
	min.	max.	min.	max.
A		5.95		.234
B	4.95		.195	
C DIA	0.88	0.92	.035	.036

## CHARACTERISTICS

Test/characteristics	Values/remarks
<b>ELECTRICAL CHARACTERISTICS</b>	
Impedance	75Ω
Operating frequency	DC to 3 GHz
V.S.W.R. max	1.02 + 0.1√F (F in GHz)
Max insertion loss (dB)	0.085√F (F in GHz)
Insulation resistance (MΩ)	5000
Operating voltage (VRMS)	500
Dielectric withstanding voltage (VRMS)	1500

### MECHANICAL CHARACTERISTICS

Life	500 matings
Cabling retention force ∅ 2.6/S ∅ 6/S + 7/S ∅ 10/S	40N
	80N
	100N

### ENVIRONMENTAL CHARACTERISTICS

Temperature range	-40°C to + 80°C
-------------------	-----------------

### MATERIALS and PLATING

Components	Materials	Platings
Body	Brass	BBR (non magnetic alloy)
Center contact Male Female	Brass Beryllium copper	Silver Gold
Insulator	Polypropylene	

## STRAIGHT PLUGS, CRIMP TYPE

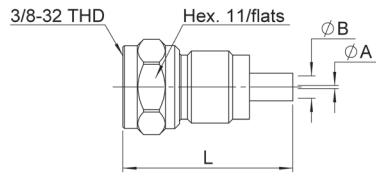


Fig. 1

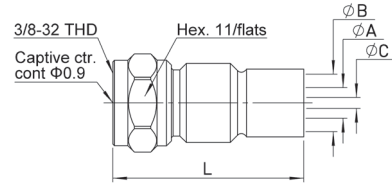
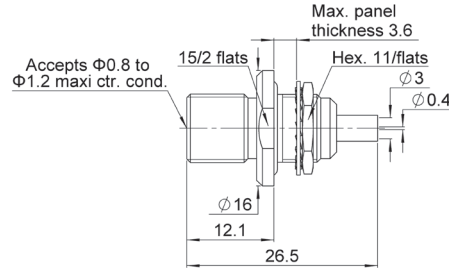


Fig. 2

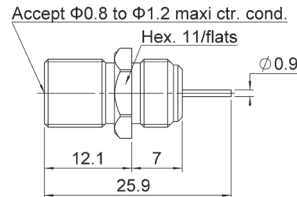
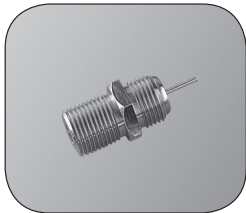
Cable group	Cable group dia.	Part number	Fig.	Captive center contact	Dimensions				Note
					A dia	B dia	C dia max	L	
RG179/RG187	2.6/75/S	R139 077 000	1	no	0.4	3		22.3	with separated center contact
RG59	6/75	R139 084 000			0.75	6.6		28.5	
RG11/RG12/RG144 Belden 9064	10/75/S	R139 089 000	2	yes	7.45	11.95	Rear socket accepts 1.2 to 1.65	26	

## STRAIGHT BULKHEAD JACK, WITH SEPARATED CENTER CONTACT



Cable group	Cable group dia.	Part number	Captive center contact	Panel drilling	Note
RG179/RG187	2.6/75/S	R139 331 100	yes	P01	with separated center contact

## STRAIGHT SCREW RECEPTACLE

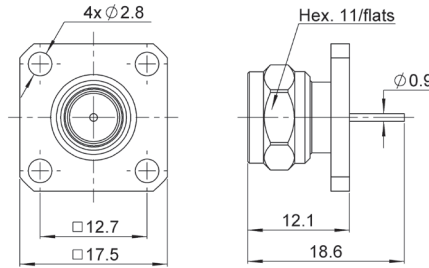


Part number	Captive center contact
R139 555 200	yes

To download data sheets and assembly instructions, visit [www.radiall.com](http://www.radiall.com) & enter the part number in the Search box.  
**Bold part numbers** represent products typically in stock & available for immediate shipment.  
 See page 8 and 9 for packaging information.

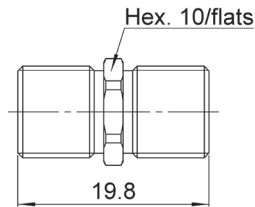
**PLUG, RECEPTACLE AND ADAPTER**

**SQUARE FLANGE RECEPTACLE WITH CYLINDRICAL CONTACT**



Part number R139 433 023	Panel drilling P03
-----------------------------	-----------------------

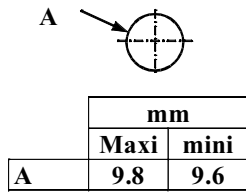
**BULKHEAD ADAPTER FEMALE-FEMALE**



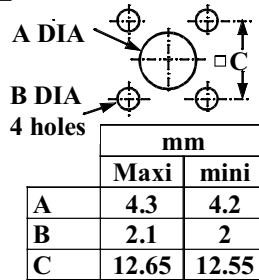
Part number R139 705 023
-----------------------------

**PANEL DRILLING**

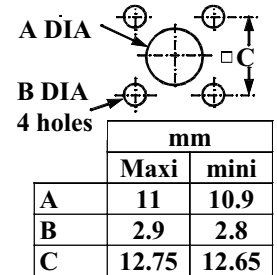
P01



P02



P03



### What is a reverse polarity connector ?

Radiall offers reverse polarity (or gender) connectors with the inversion of the center contact sexes and of the interface insulators:

The plugs have a female center contact and the jacks have a male center contact (for the RP SMA, RP BNC and RP TNC series). The plug and the jack connector set also has the same visual shape and mechanical attributes as the standard series (see below).



They are compliant with the F.C.C. standard (Federal Communications Commissions) Part 15.203 which requires a nonstandard coaxial connector interface.

### Secure connection

This design prevents any inadvertent mating with standard connectors.

Example: a RP jack will only mate with a RP plug.

### Performances

All the RP series maintain the same characteristics (material, plating, matings... ) and performances as the standard series to which they refer.

Example: a RP BNC connector will have the same characteristics as the equivalent BNC connector.

# FINDER GUIDE

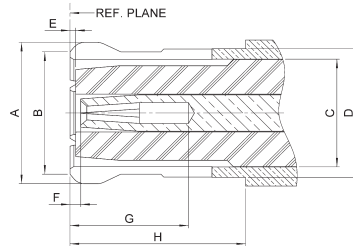
Model	Cable goupe	Cable group dia.	RP MCX series	RP SMA series	RP BNC series	RP TNC series
	RD316	2.6/50/D		R300 124 040 (page 16-9)		
	RG58/RG141	5/50/S		R300 124 073 (page 16-9)	R300 141 030* (page 16-11)	
	RG142/RG223/RG400	5/50/D			R300 141 030* (page 16-11)	
	Belden 9913	10.2/50/S				R300 143 050 (page 16-12)
right angle plug	RG174/RG316	2.6/50/S	R300 113 100 (page 16-8)	R300 124 183 (page 16-9)		
straight bulkhead jack	RG178/R196	2/50/S		R300 124 235 (page 16-10)		
	RG174/RG316	2.6/50/S		R300 124 240 (page 16-10)		
	RG58/RG141	5/50/S				R300 143 240 (page 16-12)
right angle bulkhead Jack	RG178/R196	2/50/S		R300 124 323 (page 16-10)		
	RG174/RG316	2.6/50/S		R300 124 343 (page 16-10)		
straight bulkhead receptacle		-			R300 141 400 (page 16-11)	
straight SMT receptacle		-	R300 113 800 (page 16-8)			
right angle PCB receptacle		-		R300 124 403 (page 16-10)		

\* Clamp type

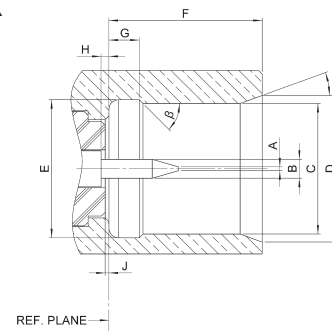
All dimensions are given in mm.

**INTERFACE**

**PLUG**



**JACK**

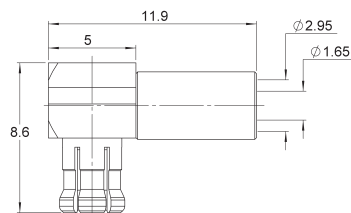


Letter	mm		inch	
	min.	max.	min.	max.
A DIA	0.1	0.2	.004	.008
B DIA	0.48	0.52	.019	.020
C DIA	3.42	3.48	.135	.137
D DIA	3.80		.150	
E DIA	3.60	3.75	.142	.148
F	4.00	4.12	.157	.162
G	0.75	0.85	.029	.033
H	0		0	
J	0		0	
$\alpha$	18°	22°	18°	22°
$\beta$	43°	47°	43°	47°

Letter	mm		inch	
	min.	max.	min.	max.
A DIA		3.80		.150
B DIA		3.60		.142
C DIA		3.00		.118
D DIA		3.40		.134
E	0		0	.004
F	0		0	.008
G	2.60		.110	
H	4.15		.163	

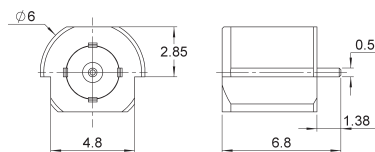
**PLUG AND RECEPTACLE**

**RIGHT ANGLE PLUG CRIMP TYPE FOR FLEXIBLE CABLES**



Cable group	Cable group dia.	Part number	Captive center contact	Finish	Packaging
RG174/ RG316	2.6/50/S	R300 113 100	Yes	gold	100 pieces/ bulk

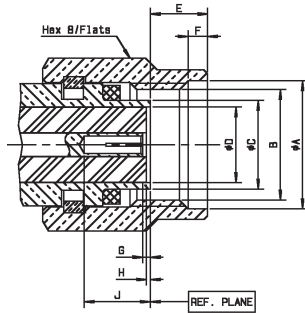
**SMT RECEPTACLE**



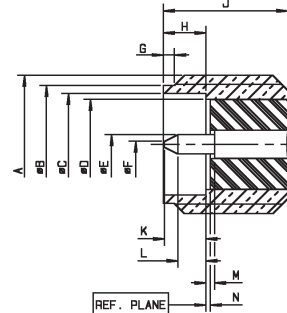
Part number	Captive center contact	Finish	Packaging
R300 113 800	yes	gold	1000 pieces/reel



## PLUG



## JACK

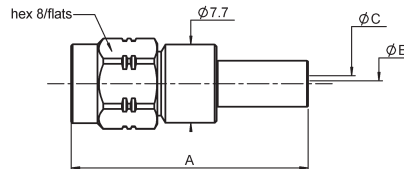


Letter	mm		inch	
	min.	max.	min.	max.
A DIA	6.35		.250	
B	1/4-36 UNS-2B			
C DIA		4.59		.181
D DIA	4.1 nominal		.161 nominal	
E		3.43		.135
F	0.38	1.14	.015	.045
G	0	0.25	0	.010
H	0	0.20	0	.008
J	2.92		.115	

Letter	mm		inch	
	min.	max.	min.	max.
A	1/4-36 UNS-2A			
B DIA	5.28	5.49	.208	.216
C DIA	4.596		.181	
D DIA	4.1 nominal		.161 nominal	
E DIA	0.90	0.94	.035	.037
F DIA		0.30		.012
G	0.38	1.14	.015	.045
H	1.88	1.98	.074	.078
J	4.31		.170	
K		2.54		.100
L	1.27		.050	
M	0	0.25	0	.010
N	0	0.20	0	.008

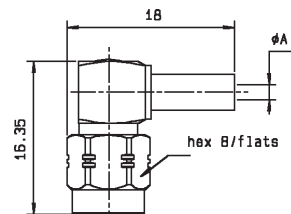
## PLUGS

### STRAIGHT PLUGS CRIMP TYPE FOR FLEXIBLE CABLES (female center contact)



Cable group	Cable group dia.	Part number	Dimensions			Captive center contact	Finish	Packaging	Note
			A	B	C				
RD316	2.6/50/D	R300 124 040	23.4	0.6	1.61	yes	BBR	100 pieces/bulk	full crimp
RG58/RG141	5/50/S	R300 124 073	26.4	1.05	3.11	yes	BBR	100 pieces/bulk	

### RIGHT ANGLE PLUG CRIMP TYPE FOR FLEXIBLE CABLES (female center contact)



Cable group	Cable group dia.	Part number	A dia.	Captive center contact	Finish	Packaging
RG174/RG316	2.6/50/S	R300 124 183	1.61	Yes	gold	100 pieces/bulk

To download data sheets and assembly instructions, visit [www.radiall.com](http://www.radiall.com) & enter the part number in the Search box.  
**Bold** part numbers represent products typically in stock & available for immediate shipment.  
 See page 8 and 9 for packaging information.

# JACKS AND RECEPTACLE

## STRAIGHT BULKHEAD JACKS CRIMP TYPE FOR FLEXIBLE CABLES (male center contact)

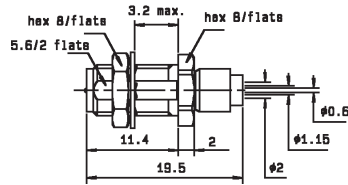


Fig. 1

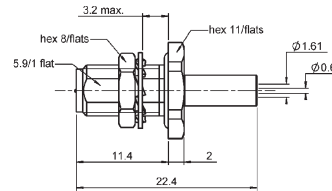
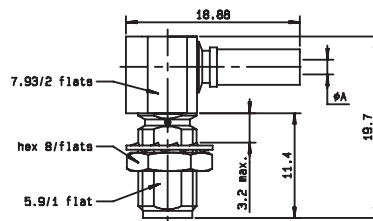


Fig. 2

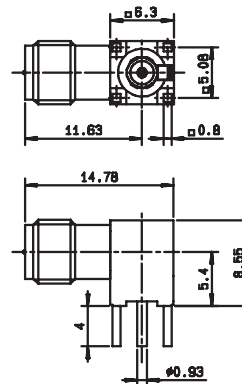
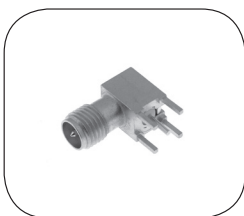
Cable group	Cable group dia.	Part number	Fig.	Captive center contact	Panel drilling	Finish	Packaging	Note
RG178/RG196	2/50/S	R300 124 235	1	yes	P05	nickel	100 pieces/ bulk	
RG174/RG316	2.6/50/S	R300 124 240	2	yes	P02	BBR		panel seal full crimp

## RIGHT ANGLE BULKHEAD JACKS CRIMP TYPE FOR FLEXIBLE CABLES (male center contact)

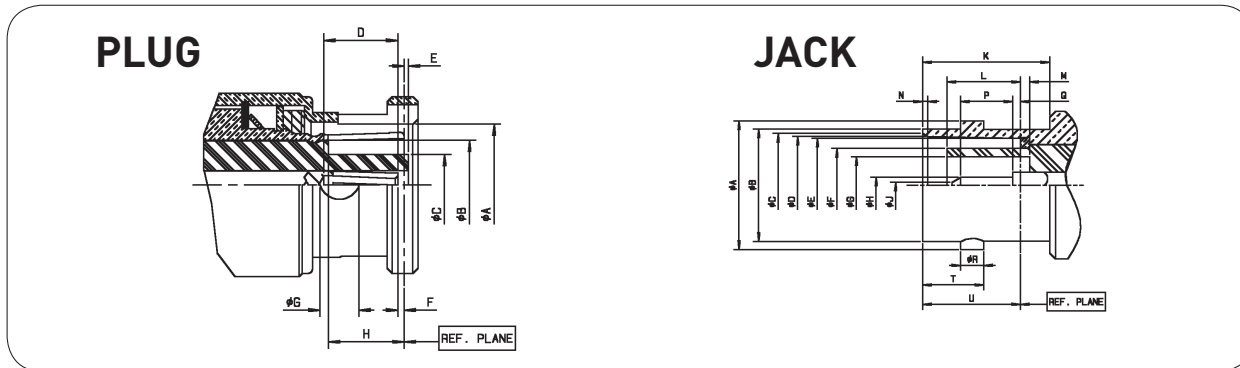


Cable group	Cable group dia.	Part number	A dia.	Captive center contact	Panel drilling	Finish	Packaging
RG178/RG196	2/50/S	R300 124 323	0.95	yes	P02	nickel	100 pieces/bulk
RG174/RG316	2.6/50/S	R300 124 343	1.63				

## PCB RECEPTACLE (male center contact)



Part number	Captive center contact	PCB pattern	Finish	Packaging	Note
R300 124 403	yes	P01	nickel	100 pieces/reel	solder legs

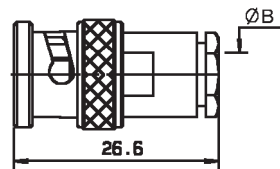


Letter	mm		inch	
	min.	max.	min.	max.
A DIA	9.78	9.91	.385	.390
B DIA	7		.275	
C DIA		4.72		.186
D	4.95		.195	
E	0.03	0.53	.001	.021
F	0.61	1.12	.024	.044
G DIA	3.15		.124	
H	5.28	5.79	.208	.228

Letter	mm		inch	
	min.	max.	min.	max.
A DIA	10.97	11.07	.432	.436
B DIA	9.60	9.70	.378	.382
C DIA	8.79	9.04	.346	.356
D DIA	8.31	8.46	.327	.333
E DIA	8.1	8.15	.319	.321
F DIA		6.40		.252
G DIA	4.83		.190	
H DIA	1.32	1.37	.052	.054
J DIA		0.64		.025
K	10.52		.414	
L	4.78	5.28	.188	.208
M	0.53	1.04	.021	.041
N	0.38	0.76	.015	.030
P	1.98		.078	
Q	0	0.25	0	.009
R DIA	1.91	2.06	.075	.081
T	5.18	5.28	.204	.208
U	8.31	8.51	.327	.335

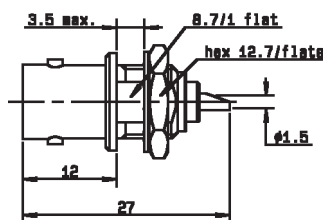
## PLUG AND RECEPTACLE

### STRAIGHT PLUG CLAMP TYPE FOR FLEXIBLE CABLES (female center contact)



Cable group	Cable group dia.	Part number	B dia.	Captive center contact	Finish	Packaging
RG58/RG141/RG142/RG223	5/50/S + D	R300 141 030	5.6	no	nickel	100 pieces/bulk

### RECEPTACLE (male center contact)

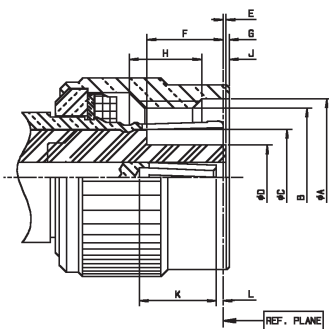


Part number	Captive center contact	Panel drilling	Finish	Packaging
R300 141 400	yes	P03	nickel	100 pieces/bulk

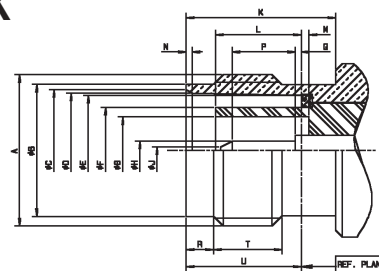
To download data sheets and assembly instructions, visit [www.radiall.com](http://www.radiall.com) & enter the part number in the Search box.  
**Bold** part numbers represent products typically in stock & available for immediate shipment.  
 See page 8 and 9 for packaging information.

INTERFACE

PLUG



JACK

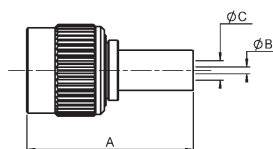


Letter	mm		inch	
	min.	max.	min.	max.
A DIA	11.18		.440	
B		7/16-28	UNEF-2B	
C DIA	7		.275	
D DIA		4.72		.186
E	0.03	0.53	.001	.020
F	5.28	5.79	.208	.228
G		1.98		.078
H	3.96		.156	
J	1.60		.063	
K	4.95		.195	
L	0.61	1.12	.024	.044

Letter	mm		inch	
	min.	max.	min.	max.
A		7/16-28	UNEF-2A	
B DIA	9.60	9.68	.378	.381
C DIA	8.79	9.04	.346	.356
D DIA	8.31	8.46	.327	.333
E DIA	8.10	8.15	.319	.321
F DIA	-	6.40		.252
G DIA	4.83		.190	
H DIA	1.32	1.37	.052	.054
J DIA		0.64		.025
K	10.52		.414	
L	4.78	5.28	.188	.208
M	0.53	1.04	.021	.041
N	0.38	0.76	.015	.030
P	1.98		.078	
Q	0	0.25	0	.010
R	1.73	2.24	.068	.088
T	4.75		.187	
U	8.31	8.51	.327	.335

PLUG AND JACK

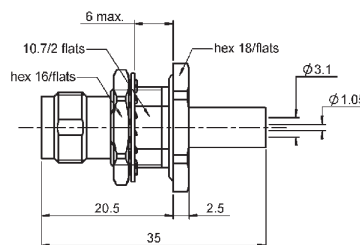
STRAIGHT PLUG CRIMP TYPE FOR FLEXIBLE CABLES (female center contact)



Cable group	Cable group dia.	Part number	Dimensions			Captive center contact	Finish	Packaging
			A	B	C			
Belden 9913	10.2/50/S	R300 143 050	28.2	2.85	7.8	yes	nickel	100 pieces/bulk

STRAIGHT BULKHEAD JACK FULL CRIMP TYPE FOR FLEXIBLE CABLES

(male center contact)

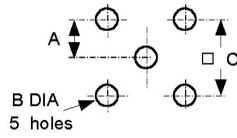


Cable group	Cable group dia.	Part number	Captive center contact	Panel drilling	Finish	Packaging	Note
RG58/RG141	5/50/S	R300 143 240	yes	P04	nickel	100 pieces/bulk	panel seal

# PANEL DRILLING

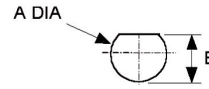
REVERSE POLARITY

P01



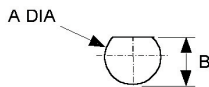
	mm	
	maxi	mini
A	2.59	2.49
B	1.4	1.3
C	5.13	5.03

P02



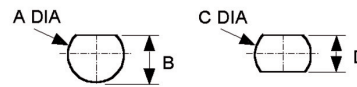
	mm	
	maxi	mini
A	6.5	6.4
B	6.15	6

P03



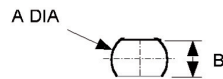
	mm	
	maxi	mini
A	9.75	9.65
B	8.9	8.8

P04



	mm	
	maxi	mini
A	12.8	12.7
B	12.1	12
C	12.8	12.7
D	10.9	10.8

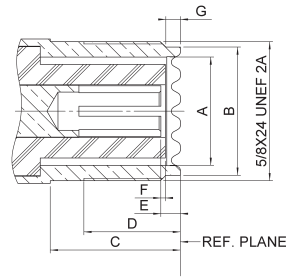
P05



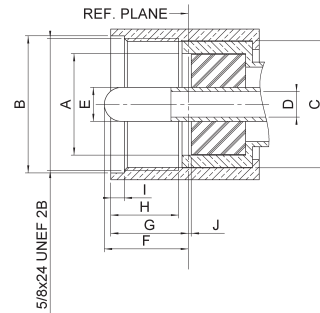
	mm	
	maxi	mini
A	6.5	6.4
B	5.8	5.7

**INTERFACE**

**PLUG**



**JACK**



Letter	mm		inch	
	min.	max.	min.	max.
A DIA	11.56	12.22	.455	.481
B DIA	16.00	---	.630	---
C DIA	13.92	---	.548	---
D DIA	---	3.35	---	.132
E DIA	3.912	4.013	.154	.158
F	---	11.10	---	.437
G	---	9.91	---	.390
H	8.76	---	.335	---
I	1.19	4.27	.047	.168
J	0.00	---	.000	---

Letter	mm		inch	
	min.	max.	min.	max.
A DIA	11.56	12.22	.455	.481
B DIA	14.00	14.25	.551	.561
C	11.10	---	.437	---
D	7.87	---	.310	---
E	1.02	---	.040	---
F	0.03	---	.001	---
G	1.19	1.96	.047	.077

**CHARACTERISTICS**

Test/characteristics	Values/remarks
----------------------	----------------

**ELECTRICAL CHARACTERISTICS**

Impedance	50Ω
Maximum frequency range	500 MHz
Test voltage (at sea level)	2000 V rms - 50 Hz
Working voltage (at sea level)	750 V
Insulation resistance (under 500 V)	≤ 5 GΩ
Contact resistance - centre contact	5 mΩ max
- outer contact	5 mΩ max

**MECHANICAL CHARACTERISTICS**

Mating cycles	500
---------------	-----

**ENVIRONMENTAL CHARACTERISTICS**

Temperature range - PTFE	-55°C to + 155°C
- bakelite	-40°C to + 165°C
- styramic	-40°C to + 70°C
Salt spray	48 Hrs

**MATERIALS**

Contacts and interfaces	Heat treated beryllium copper
Other parts	Brass
Insulator	PTFE (T) - bakelite (B) or styramic (St.)
Gaskets	Neoprene or silicone rubber

All dimensions are given in mm

## STRAIGHT PLUGS

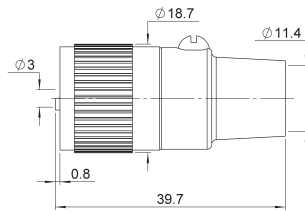


Fig. 1

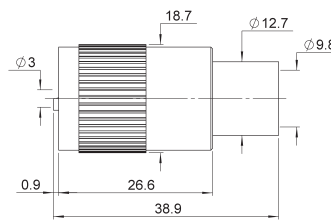


Fig. 2

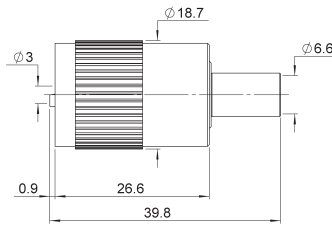


Fig. 3

Cable group	Cable group dia.	Part number	Fig	Note
RG59/RG62	6/75Ω	R155 074 000	3	Crimp type - Insulator: PTFE
RG213/RG393/RG11/RG12/RG144	10/50+75Ω	R155 003 000	1	Insulator: PTFE
		R155 005 000	2	Insulator: PTFE

## RECEPTACLES

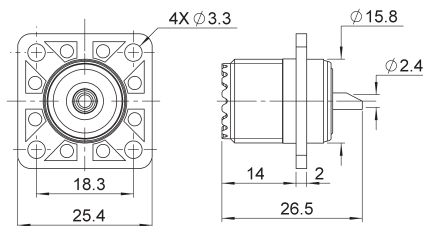


Fig. 1

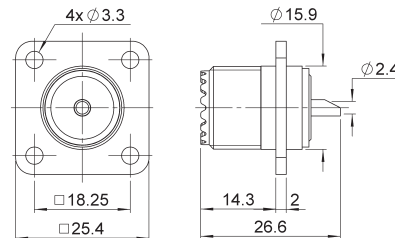


Fig. 2

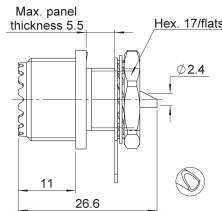


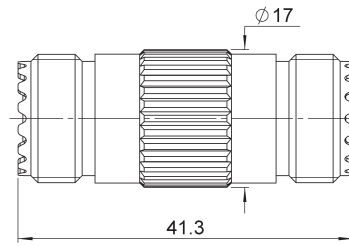
Fig. 3

Part number	Fig	Panel drilling	Note
R155 404 161	1	P01	Square flange - Solder pot - Insulator: Bakelite
R155 405 000	2	P01	Square flange - Solder pot - Insulator: PTFE
R155 560 000	3	P02	Bulkhead - Solder pot - Insulator: PTFE

To download data sheets and assembly instructions, visit [www.radiall.com](http://www.radiall.com) & enter the part number in the Search box.  
**Bold** part numbers represent products typically in stock & available for immediate shipment.  
 See page 8 and 9 for packaging information.

**ADAPTER**

**IN SERIES ADAPTER**



Part number	Note
R155 705 000	Straight female - female - Insulator: Styramic

**PANEL DRILLING**

**P01**

A DIA  
B DIA  
4 holes

	mm	
	Maxi	mini
<b>A</b>	16.3	16.2
<b>B</b>	3.3	3.2
<b>C</b>	18.3	18.2

**P02**

A

	mm	
	Maxi	mini
<b>A</b>	12.3	12.2
<b>B</b>	2.3	2.2
<b>C</b>	15.8	15.7



Cable designation	Cable Group Ø / Ω	Imp. Ω	Cable dimensions mm (inch)					Radiall cable if applicable		
			Core type	Core Ø	Insulator Ø	Screen	Outer Ø	P/N	Remark	
RG 174 A/U	2.6 / 50 S	50	7 x 0.16	0.48 (.019)	1.52 (.060)	S	2.79 (.110)	C291 150 000	PVC jacket	
RG 178 B/U	2 / 50 S	50	7 x 0.1	0.30 (.012)	0.84 (.033)	S	1.78 (.070)	C291 145 007	FEP jacket	
RG 178 B/U	2 / 50 S	50	7 x 0.1	0.30 (.012)	0.84 (.033)	S	1.83 (.072)	C291 145 060	PVC jacket	
RG178nonm.	2 / 50 S	50	7 x 0.1	0.29 (.011)	0.84 (.033)	S	1.80 (.071)	C291 140 087	non magnetic / FEP jacket	
RG 179 B/U	2.6 / 75 S	75	7 x 0.1	0.30 (.012)	1.60 (.063)	S	2.54 (.010)	C291 210 007	FEP jacket	
RG 187 A/U	2.6 / 75 S	75	7 x 0.1	0.30 (.012)	1.60 (.063)	S	2.79 (.110)	C291 211 006	PTFE jacket	
RG 188 A/U	2.6 / 50 S	50	7 x 0.17	0.51 (.020)	1.52 (.060)	S	2.79 (.110)	C291 160 006	PTFE jacket	
RG 196 A/U	2 / 50 S	50	7 x 0.1	0.30 (.012)	0.86 (.034)	S	2.03 (.080)	C291 110 006	PTFE jacket	
RG 212 /U	8 / 50 D	50	solid	1.41 (.056)	4.70 (.185)	D	8.43 (.331)	na		
RG 213 /U	10 / 50 S	50	7 x 0.75	2.26 (.089)	7.24 (.285)	S	10.30 (.406)	C291 510 000	PVC jacket	
RG 214 /U	11 / 50 D	50	7 x 0.75	2.25 (.089)	7.24 (.285)	D	10.80 (.425)	C291 600 000	PVC jacket	
RG 215	10 / 50 S	50	7 x 0.75	2.25 (.089)	7.25 (.285)	S	10.29 (.405)	na		
RG 216 /U	11 / 75 D	75	7 x 0.4	1.21 (.048)	7.24 (.285)	D	10.80 (.425)	C291 610 000	PVC jacket	
RG 217 /U	14 / 50 D	50	solid	2.69 (.106)	9.40 (.370)	D	13.84 (.545)	C291 620 000	PVC jacket	
RG 218 /U	22 / 50 S	50	solid	4.95 (.195)	17.27 (.680)	S	22.10 (.870)	C291 630 000	PVC jacket	
RG 223 /U	5 / 50 D	50	solid	0.89 (.035)	2.95 (.116)	D	5.38 (.212)	C291 330 000	PVC jacket	
RG 225 /U	11 / 50 D	50	7 x 0.8	2.38 (.094)	7.24 (.285)	D	10.90 (.429)	C291 605 007	glass fiber jacket	
RG 303 /U	5 / 50 S	50	solid	0.94 (.037)	2.95 (.116)	S	4.32 (.170)	na		
RG 316 /U	2.6 / 50 S	50	7 x 0.17	0.53 (.021)	1.52 (.060)	S	2.49 (.098)	C291 170 007	FEP jacket	
RD 316	2.6 / 50 D	50	7 x 0.17	0.53 (.021)	1.52 (.060)	D	2.80 (.110)	C291 185 067	FEP jacket	
RG 393	10 / 50 D	50	7 x 0.81	2.39 (.094)	7.24 (.285)	D	9.91 (.390)	C291 511 007	FEP jacket	
RG 400	5 / 50 / D	50	19 x 0.19	0.98 (.039)	2.95 (.116)	D	4.95 (.195)	C291 324 007	FEP jacket	
<b>Flexible cable BT approved</b>										
RD 179	2.6 / 75 D	75	7 x 0.10	0.30 (.012)	1.6 (.063)	D	3.07 (.121)	C291 230 080	LSOH jacket	
BT 3002	3.6 / 75 D	75	solid	0.31 (.012)	1.95 (.077)	D	3.55 (.140)	C291 246 046	FEP jacket	
BT 2002	5 / 75 D	75	7 x 0.20	0.60 (.024)	2.5 (.098)	D	5.1 (.200)	C291 333 080	FEP jacket	
<b>Semi rigid cables MIL-C-17 standard</b>										
RG 401 /U	.250"	50	solid	1.63 (.064)	5.31 (.209)	--	6.35 (.250)	C291 870 001	copper tubing	
RG 401 alu	.250"	50	solid	1.63 (.064)	5.31 (.209)	--	6.35 (.250)	C291 874 187	tinned alu tubing	
RG 402 /U	.141"	50	solid	0.92 (.036)	2.98 (.117)	--	3.58 (.141)	C291 860 001	copper tubing	
RG 402 tin	.141"	50	solid	0.92 (.036)	2.98 (.117)	--	3.58 (.141)	C291 862 005	tinned copper tubing	
RG402silver	.141"	50	solid	0.92 (.036)	2.98 (.117)	--	3.58 (.141)	C291 861 066	silvered copper tubing	
RG 402 alu	.141"	50	solid	0.92 (.036)	2.98 (.117)	--	3.58 (.141)	C291 864 187	tinned alu tubing	
RG402nonm.	.141"	50	solid	0.92 (.036)	2.98 (.117)	--	3.58 (.141)	C291 861 061	non magnetic / copper tubing	
RG 405 /U	.085"	50	solid	0.51 (.020)	1.68 (.066)	--	2.20 (.087)	C291 850 001	copper tubing	
RG 405 tin	.085"	50	solid	0.51 (.020)	1.68 (.066)	--	2.20 (.087)	C291 850 005	tinned copper tubing	
RG 405 alu	.085"	50	solid	0.51 (.020)	1.68 (.066)	--	2.20 (.087)	C291 844 187	tinned alu tubing	
RG405nonm.	.085"	50	solid	0.51 (.020)	1.68 (.066)	--	2.20 (.087)	C291 851 001	non magnetic / copper tubing	
.047"	.047"	50	solid	0.29 (.011)	0.94 (.037)	--	1.19 (.047)	C291 855 001	copper tubing	
.047" tin	.047"	50	solid	0.29 (.011)	0.94 (.037)	--	1.19 (.047)	C291 855 065	tinned copper tubing	
<b>Hand-formable cable</b>										
Hand-formable	.085"	50	solid	0.51 (.020)	1.63 (.064)	--	2.21 (.087)	C291 844 065	tin soaked braid	
Hand-formable	.141"	50	solid	0.92 (.036)	2.95 (.116)	--	3.50 (.138)	C291 864 065	tin soaked braid	
Hand-formable	.141"	50	solid	0.92 (.036)	2.98 (.117)	--	4.05 (.159)	C291 866 378	FEP jacket	
Hand-formable	.141"	50	solid	0.92 (.036)	2.98 (.117)	--	4.50 (.177)	C291 866 270	LSZH jacket	
<b>Corrugated cables (with helical or ringed/annular copper tube)</b>										
Flexible	1/4"	50	solid	2.38 (.094)	6.40 (.252)	--	8.70 (.343)	na	ringed/annular tube	
Flexible	1/2"	50	solid	4.80 (.189)	11.6 (.457)	--	16.35 (.644)	C291 972 085	ringed/annular tube	
Flexible	7/8"	50	solid	9.13 (.359)	22.5 (.866)	--	27.7 (1.091)	na	ringed/annular tube	
Flexible	1 1/4"	50	solid	12.7 (.500)	32.5 (1.28)	--	39.5 (1.55)	na	ringed/annular tube	
Flexible	1 5/8"	50	solid	17.3 (.681)	43.5 (1.71)	--	50.5 (1.99)	na	ringed/annular tube	
Super flexible	1/4"	50	solid	1.90 (.075)	4.70 (.185)	--	7.40 (.291)	C291 993 080	helical tube	
Super flexible	3/8"	50	solid	2.60 (.102)	6.30 (.248)	--	10.8 (.425)	C291 996 070	helical tube	
Super flexible	1/2"	50	solid	3.60 (.142)	8.70 (.343)	--	13.2 (.520)	C291 994 080	helical tube	
Super flexible	7/8"	50	tube	9.04 (.356)	23.62 (.930)	--	27.48 (1.082)	C291 996 580	helical tube	

Note: S = single braid. D = dual braid.

For more information about cables manufactured by Radiall, please consult our online catalog.

[www.radiall.com](http://www.radiall.com)

## X-ON Electronics

Largest Supplier of Electrical and Electronic Components

*Click to view similar products for [RF Connectors / Coaxial Connectors](#) category:*

*Click to view products by [Radiall](#) manufacturer:*

Other Similar products are found below :

[8915-1511-000](#) [89674-0827](#) [6001-7071-019](#) [6002-7051-003](#) [6002-7551-202](#) [6059674-1](#) [619550-1](#) [630059-000](#) [M39030/3-01N](#) [6500-7071-046](#) [6769](#) [CX050L2AQ](#) [7002-1541-010](#) [7002-1542-011](#) [7004-1512-000](#) [7009-1511-004](#) [7010-1511-000](#) [7029-1511-060](#) [7101-1541-010](#) [7101-1571-002](#) [7145-1521-002](#) [7203-1571-003](#) [7209-1511-011](#) [7210-1511-015](#) [7210-1511-019](#) [73137-5015](#) [73216-2241](#) [73404-2300](#) [7405-1521-005](#) [7405-1521-802](#) [8527](#) [8547](#) [FS11V](#) [877931](#) [8808-1511-001](#) [9074-9513-000](#) [9101-9573-002](#) [910A205F](#) [9130-9573-002](#) [PL11SC-026](#) [PL375-33](#) [PL40-5](#) [PL74C-221](#) [PL75MC-217](#) [PL803-7](#) [1200690078](#) [1-201144-1](#) [R107003010W](#) [R110A172100](#) [R112186000](#)