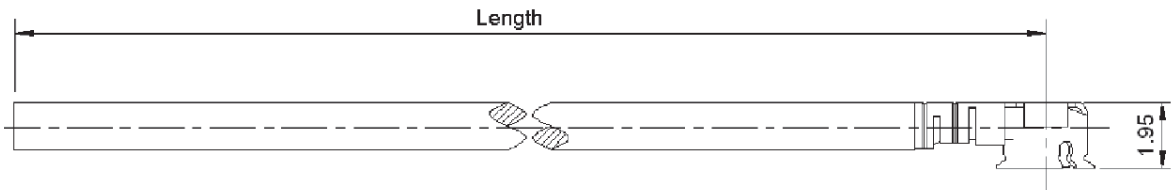
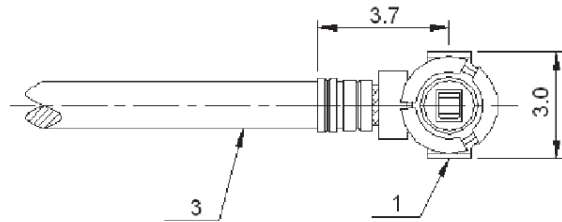


PLUG MML H2.5- PIGTAIL CABLE 1.33/50S-BR,LENGTH=XXXMM	R302.255.003 XXX Series : MML
------------------------------------------------------------------------	-----------------------------------------

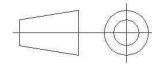


Length=XXX	Step	Tolerance
30 to 100	10	±2
110 to 200		±3
225 to 300	25	±5
325 to 500		±10



E.g. XXX=070 means length is 70±2, the part number is R302.255.003 070

All dimensions are in mm.



- * 1 * Connector A : **MML H2.5 PLUG (gold plated)**
- * 2 * Connector B : **NA**
- * 3 * Cable : **1.33/50S BLACK**

ELECTRICAL CHARACTERISTICS

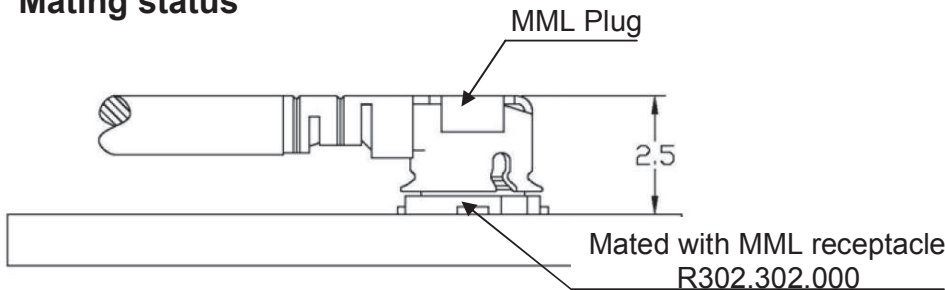
Impedance	50 Ω
Frequency	0-6 GHz
Operating temperature	-40/+90 ° C
VSWR	NA + 0.00 x F(GHz) Maxi
Insertion loss	NA √F(GHz) dB Maxi
Voltage rating	250 Veff Maxi
Dielectric withstanding voltage	300 Veff mini
Insulation resistance	500 MΩ mini

SPECIFICATION

Weight	0.80 g
Cable retention	4 N mini
Mating life	30 Cycles
Others :	

Length	*Weight(Maxi)
30 to 100	0.80 g
110 to 200	0.80 g
225 to 350	0.90 g
375 to 500	1.00 g

Mating status



Edition : 1307 A

Design changes may be in order to improve the product.

This document contains proprietary information and such information shall not be disclosed to any third party for any purpose whatsoever or used for manufacturing purposes without prior written agreement from RADIAL



X-ON Electronics

Largest Supplier of Electrical and Electronic Components

Click to view similar products for [RF Cable Assemblies](#) category:

Click to view products by [Radiall](#) manufacturer:

Other Similar products are found below :

[73-6352-10](#) [73-6353-3](#) [R285001001](#) [R288940004](#) [145111-05-12.00](#) [1661-C-24](#) [1801171170914KE](#) [24P104C24J1-012](#) [24P104C24P1-006](#)
[24P104C24P1-018](#) [24P204C24J1-003](#) [172-2150-EX](#) [1800920920914PJ](#) [FCB-3030-ALT](#) [21117-046](#) [21117-050](#) [PCX-24-50](#) [24P103C24P2-](#)
[003](#) [25P203C25P2-003](#) [R284008001](#) [R285001021](#) [R285426000](#) [R288940003](#) [4814-BB-24](#) [5260-72](#) [JT2N1-CL1-1F](#) [DLP-COAX1](#) [4814-K-](#)
[48](#) [115101-09-06.00](#) [CCNTN2-MM-LL335-26](#) [73-6351-25](#) [73-6352-3](#) [73-6353-25](#) [1800920920610PJ](#) [GD0BQ0BQ024.0](#) [1-3636-600-5210](#)
[TL8A-11SMA-11SMA-01500-51](#) [R284C0351060](#) [R288940009](#) [R284C0351028](#) [R288940002](#) [9702-1SL-1](#) [PT82NSMA](#) [73-6353-10](#)
[R285020301W](#) [PCX-18-50](#) [Minibend-9](#) [Minibend-4](#) [BNC TO SMA Cable](#) [MIKROE-274](#)